

## SITE NOTICE PLACEMENTS

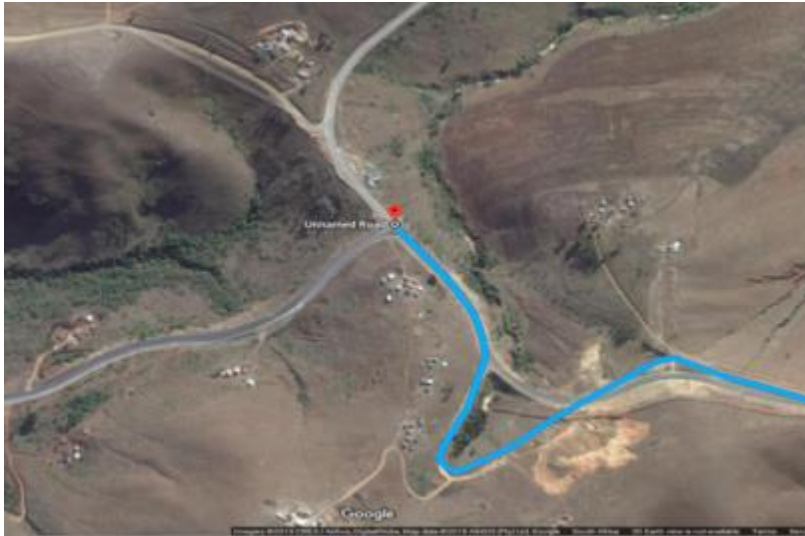


Figure 1: Satellite image of first notice placement.



Figure 2: Site notice placed at the main intersection in the Nkandla area.



Figure 3: Satellite image of second notice placement.



Figure 4: Site notice placed at the entrance to the Mankumbu village.



Figure 5: Satellite image of the third notice placement.



Figure 6: Site notice placed at the entrance road to the Mamba Primary School, next to Emabheleni general dealer.



Figure 7: Satellite image of the fourth notice placement.



Figure 8: Site notice placed at the entrance road to Kwa-Nxamalala Village.





Figure 9: Satellite image of the fifth notice placement.



Figure 10: Site notice placed at the entrance road to Mdimela village.



Figure 11: Satellite image of the sixth notice placement.



Figure 12: Site notice was placed at an intersection leading to various small villages in the Mdimela area.



Figure 13: Satellite image of the seventh notice placement.



Figure 14: Site notice placed at an intersection leading to the Emachubeni village.



Figure 15: Satellite image of the eighth notice placement.



Figure 16: Site notice was placed at the outside the Nkunzana mine access property in the Emachubeni village.



## POSTER PLACEMENTS



Figure 17: A3 isiZulu poster placed at the Emabheleni local store.



Figure 18: Notification letters (in isiZulu) placed at the Emabheleni local store for interested community members to collect.



Figure 19: A3 isiZulu poster placed at the Zingelwayo local store.



Figure 20: A4 site notices (in isiZulu) placed at the Emabheleni local store for interested community members to collect.

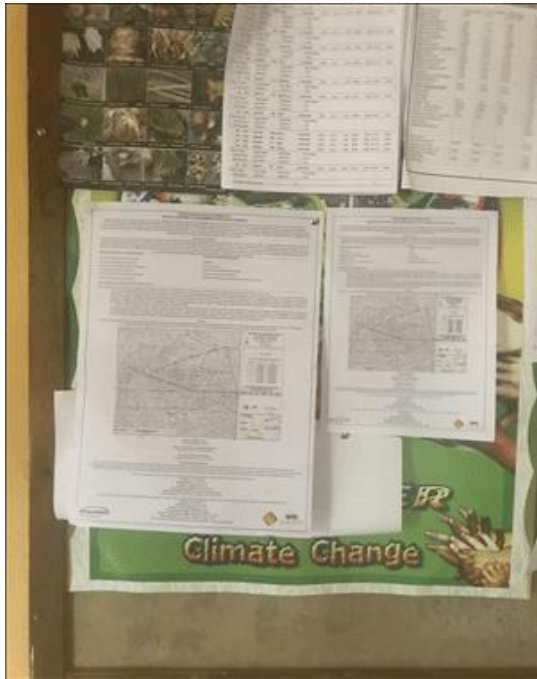


Figure 21: IsiZulu and English posters placed at the Nkandla Forest Reserve Office notice board.

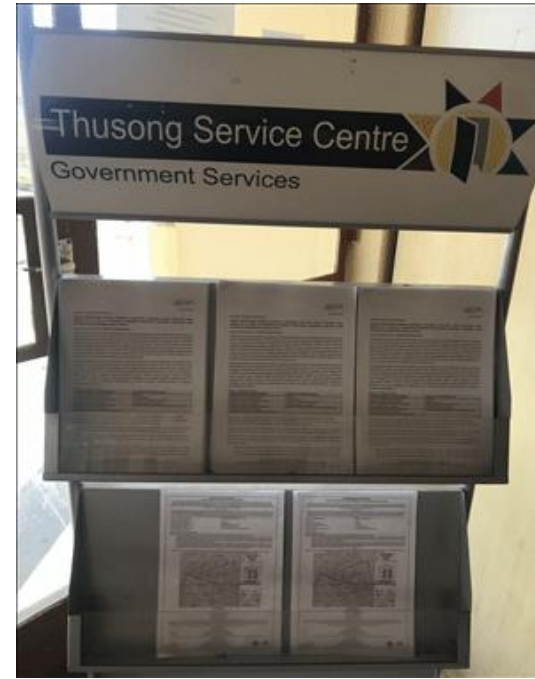


Figure 22: Notification documents (letters and site notices) placed at the Thusong Service Centre.

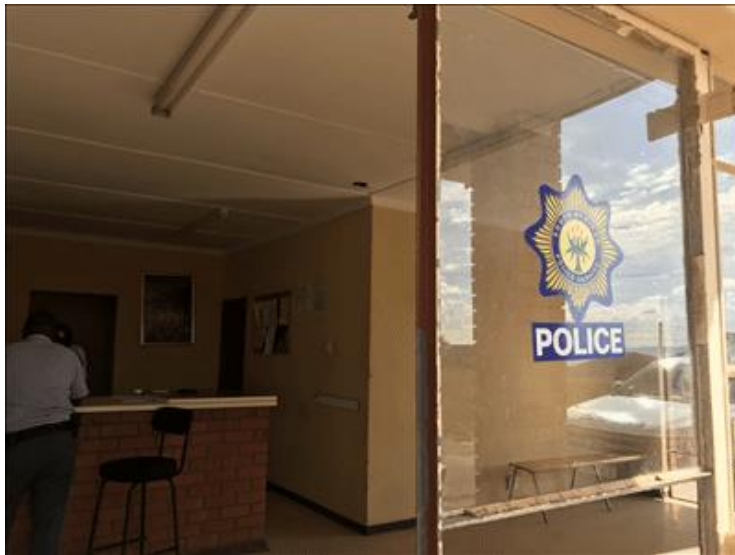


Figure 23: IsiZulu and English posters placed at Kwa-Nxamalala Police Station.



Figure 24: IsiZulu and English posters placed at Kwa-Nxamalala Post Office.