

**SCREENING REPORT FOR AN ENVIRONMENTAL AUTHORIZATION AS
REQUIRED BY THE 2014 EIA REGULATIONS – PROPOSED SITE
ENVIRONMENTAL SENSITIVITY**

EIA Reference number:

Project name: Bothaville Consolidated

Project title: Bothaville Consolidated

Date screening report generated: 08/02/2024 12:47:28

Applicant: Reef Exploration (Pty) Ltd

Compiler: Shango Solutions

Compiler signature:

.....

Application Category: Mining|Prospecting rights

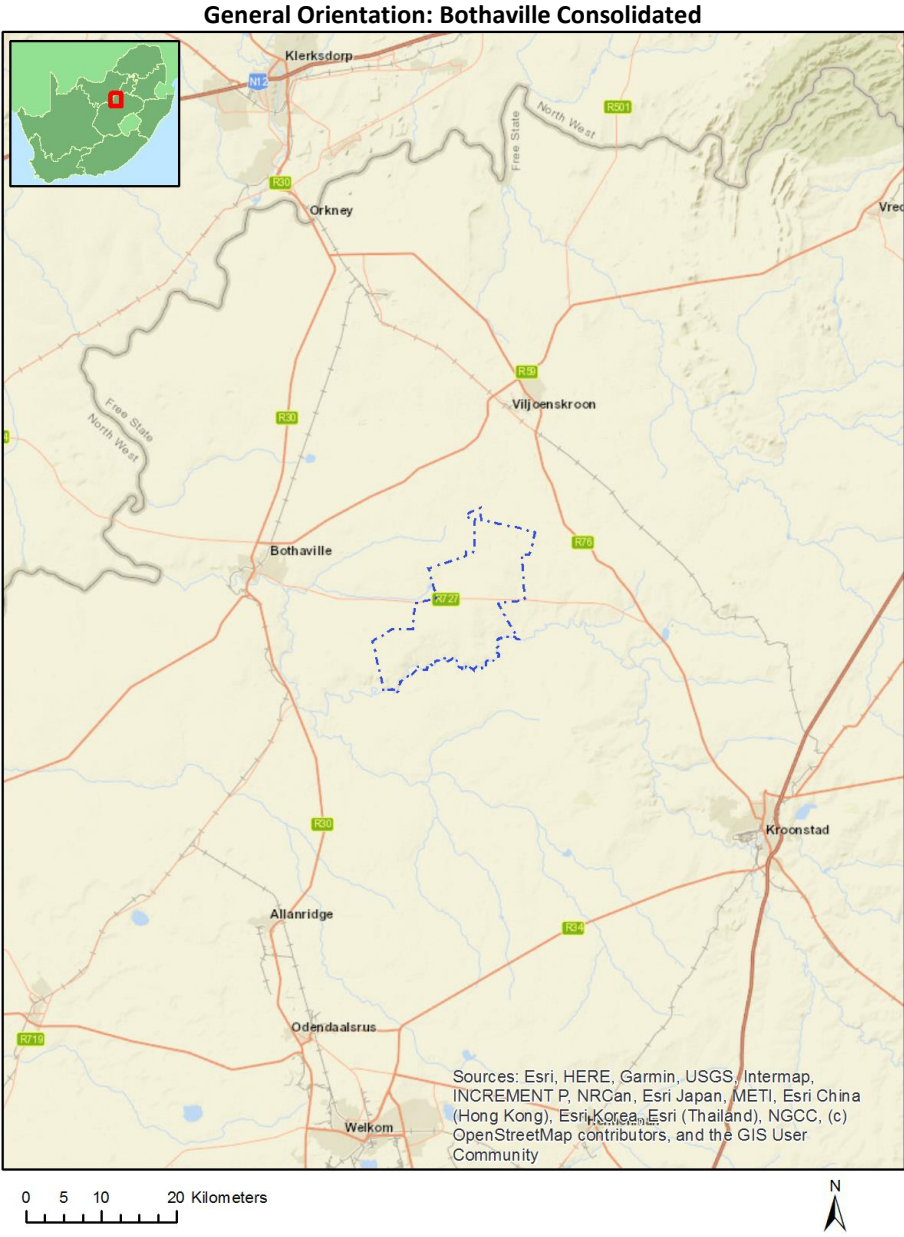
OFFICIAL

Table of Contents

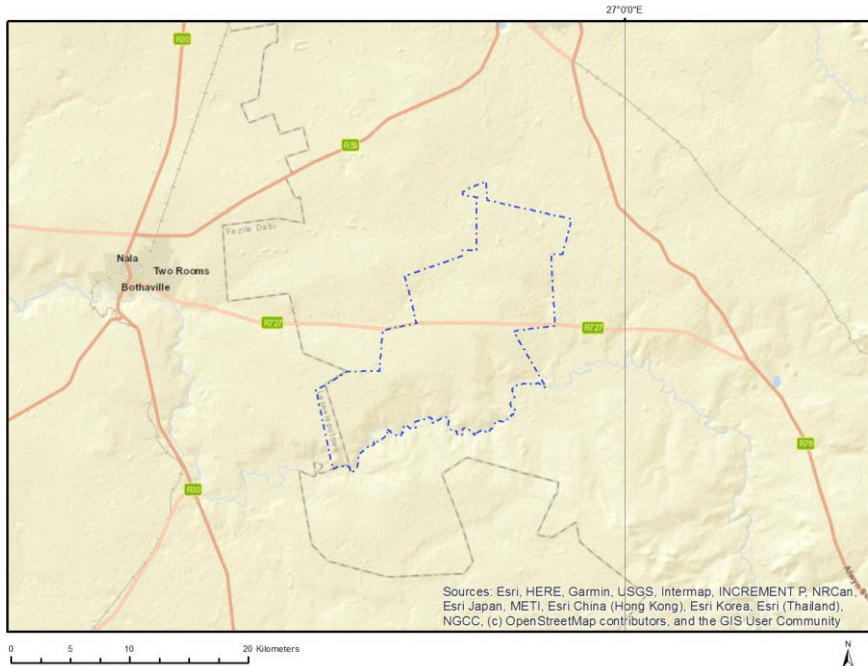
- Proposed Project Location 3
 - Orientation map 1: General location 3
- Map of proposed site and relevant area(s) 4
 - Cadastral details of the proposed site 4
 - Wind and Solar developments with an approved Environmental Authorisation or applications under consideration within 30 km of the proposed area 6
 - Environmental Management Frameworks relevant to the application 7
- Environmental screening results and assessment outcomes 7
 - Relevant development incentives, restrictions, exclusions or prohibitions 7
 - Proposed Development Area Environmental Sensitivity 8
 - Specialist assessments identified 8
- Results of the environmental sensitivity of the proposed area 10
 - MAP OF RELATIVE AGRICULTURE THEME SENSITIVITY 10
 - MAP OF RELATIVE ANIMAL SPECIES THEME SENSITIVITY 11
 - MAP OF RELATIVE AQUATIC BIODIVERSITY THEME SENSITIVITY 12
 - MAP OF RELATIVE ARCHAEOLOGICAL AND CULTURAL HERITAGE THEME SENSITIVITY 13
 - MAP OF RELATIVE CIVIL AVIATION THEME SENSITIVITY 14
 - MAP OF RELATIVE DEFENCE THEME SENSITIVITY 15
 - MAP OF RELATIVE PALEONTOLOGY THEME SENSITIVITY 16
 - MAP OF RELATIVE PLANT SPECIES THEME SENSITIVITY 17
 - MAP OF RELATIVE TERRESTRIAL BIODIVERSITY THEME SENSITIVITY 18

Proposed Project Location

Orientation map 1: General location



Map of proposed site and relevant area(s)



Cadastral details of the proposed site

Property details:

No	Farm Name	Farm/ Erf No	Portion	Latitude	Longitude	Property Type
1	DEVON	78	0	27°21'39.46S	26°51'43.35E	Farm
2	GELUKSKRAAL	56	0	27°29'25.19S	26°48'51.28E	Farm
3	KAALPLAATS	51	0	27°25'59.48S	26°49'55.7E	Farm
4	SPITSHOEK	868	0	27°27'39.94S	26°49'46.17E	Farm
5	ROODE RAND	35	0	27°29'0.5S	26°47'14.73E	Farm
6	RUSTPAN	1147	0	27°24'34.56S	26°54'21.62E	Farm
7	LEKKERLEVEN	308	0	27°23'26.54S	26°53'43.97E	Farm
8	DIEPWATER	50	0	27°25'57.9S	26°50'32.67E	Farm
9	BRAKSPRUIT	222	0	27°28'37.38S	26°47'35.86E	Farm
10	TARANTAALDRAAI	156	0	27°27'38.1S	26°51'44.15E	Farm
11	VLAKPAN	541	0	27°20'46.18S	26°53'54.98E	Farm
12	SPITSHOEK	868	0	27°27'39.94S	26°49'46.17E	Farm
13	BEESTKRAALNOORD	186	0	27°28'0.81S	26°48'27.09E	Farm
14	MEALIEBULT	20	0	27°28'27.28S	26°47'53.34E	Farm
15	GRASPAN	16	0	27°22'22.69S	26°50'37.1E	Farm
16	HEBRON	107	0	27°21'16.76S	26°56'0.05E	Farm
17	DOORNDRAAI EAST	235	0	27°26'31.33S	26°55'9.03E	Farm
18	STUKPAN	435	0	27°24'22.69S	26°52'11.35E	Farm
19	TALJAARD	300	0	27°22'18.88S	26°53'3.71E	Farm
20	DAMPLAATS	220	0	27°29'14.85S	26°46'41.97E	Farm
21	UITKIJK	147	0	27°27'36.31S	26°53'37.69E	Farm
22	DOORNHEUVEL	242	0	27°26'1.45S	26°49'16.98E	Farm
23	LIJDEN	264	0	27°28'7.77S	26°49'32.89E	Farm
24	WEESTEVREDEN	269	0	27°27'43.14S	26°50'32.17E	Farm
25	ANNASVILLE	1196	0	27°23'40.81S	26°50'50.26E	Farm
26	EDEN	454	0	27°22'38.8S	26°53'44.73E	Farm
27	EUREKA	761	0	27°27'42.22S	26°52'33.7E	Farm

28	DOORNDRAAI WEST	154	0	27°26'35S	26°54'15.78E	Farm
29	BLESBOKLAAGTE	250	0	27°23'25.48S	26°56'14.7E	Farm
30	ZOETLAAGTE	194	0	27°23'4.05S	26°51'50.07E	Farm
31	VERGENOEG	89	0	27°22'56.22S	26°55'1.76E	Farm
32	CONCORD	392	0	27°25'26.61S	26°51'29.47E	Farm
33	EUREKA	761	0	27°28'17.99S	26°52'40.74E	Farm Portion
34	LIJDEN	264	0	27°28'7.77S	26°49'32.89E	Farm Portion
35	BLESBOKLAAGTE	250	3	27°23'7.47S	26°56'2.98E	Farm Portion
36	ROODE RAND	35	2	27°28'46.07S	26°47'10.43E	Farm Portion
37	ZOETLAAGTE	194	0	27°23'2.18S	26°51'28.63E	Farm Portion
38	GELUKSKRAAL	56	0	27°29'25.19S	26°48'51.28E	Farm Portion
39	BEESTKRAALNOORD	186	0	27°28'0.81S	26°48'27.09E	Farm Portion
40	CONCORD	392	0	27°25'34.7S	26°52'0.49E	Farm Portion
41	DOORNHEUVEL	242	0	27°26'1.45S	26°49'16.98E	Farm Portion
42	DIEPWATER	50	0	27°25'57.9S	26°50'32.67E	Farm Portion
43	TALJAARD	300	0	27°22'18.88S	26°53'3.71E	Farm Portion
44	BLESBOKLAAGTE	250	2	27°23'6.12S	26°56'18.97E	Farm Portion
45	EDEN	454	0	27°22'38.8S	26°53'44.73E	Farm Portion
46	ROODE RAND	35	0	27°30'4.02S	26°47'35.46E	Farm Portion
47	ANNASVILLE	1196	0	27°23'40.81S	26°50'50.26E	Farm Portion
48	BLESBOKLAAGTE	250	0	27°24'39.01S	26°56'28.29E	Farm Portion
49	HEBRON	107	2	27°20'54.11S	26°55'50.37E	Farm Portion
50	TARANTAALDRAAI	156	1	27°26'45.29S	26°51'42.23E	Farm Portion
51	RUSTPAN	1147	1	27°25'5.18S	26°55'27.13E	Farm Portion
52	WEESTEVREDEN	269	1	27°27'25.3S	26°50'48.25E	Farm Portion
53	LEKKERLEVEN	308	1	27°23'36.57S	26°53'27.84E	Farm Portion
54	RUSTPAN	1147	8	27°24'24.19S	26°54'13.55E	Farm Portion
55	EUREKA	761	1	27°26'44.31S	26°52'33.18E	Farm Portion
56	DOORNDRAAI WEST	154	0	27°26'35.06S	26°54'23.21E	Farm Portion
57	VLAKPAN	541	0	27°20'46.18S	26°53'54.98E	Farm Portion
58	DAMPLAATS	220	0	27°29'11.61S	26°46'51.09E	Farm Portion
59	VERGENOEG	89	0	27°22'56.44S	26°55'6.72E	Farm Portion
60	CONCORD	392	1	27°24'49.19S	26°51'28.83E	Farm Portion
61	RUSTPAN	1147	2	27°24'23.65S	26°55'36.05E	Farm Portion
62	RUSTPAN	1147	3	27°24'21.99S	26°54'55.91E	Farm Portion
63	LEKKERLEVEN	308	0	27°23'14.74S	26°54'10.94E	Farm Portion
64	STUKPAN	435	1	27°24'22.86S	26°52'15.47E	Farm Portion
65	RUSTPAN	1147	7	27°24'40.14S	26°53'20.43E	Farm Portion
66	ROODE RAND	35	1	27°27'40.62S	26°46'47.95E	Farm Portion
67	BRAKSPRUIT	222	0	27°28'37.38S	26°47'35.86E	Farm Portion
68	ZOETLAAGTE	194	1	27°22'51.35S	26°52'22.69E	Farm Portion
69	MEALIEBULT	20	0	27°28'27.28S	26°47'53.34E	Farm Portion
70	TARANTAALDRAAI	156	0	27°27'59.19S	26°51'44.24E	Farm Portion
71	KAALPLAATS	51	0	27°25'59.48S	26°49'55.7E	Farm Portion
72	CONCORD	392	2	27°25'46.66S	26°51'8.36E	Farm Portion
73	DAMPLAATS	220	1	27°29'18.07S	26°46'32.9E	Farm Portion
74	HEBRON	107	1	27°21'32.05S	26°56'56.14E	Farm Portion
75	BLESBOKLAAGTE	250	1	27°23'6.28S	26°56'35.41E	Farm Portion
76	WEESTEVREDEN	269	0	27°27'39.31S	26°50'9.99E	Farm Portion
77	ZOETLAAGTE	194	2	27°23'40.12S	26°52'26.1E	Farm Portion
78	RUSTPAN	1147	0	27°24'23.52S	26°53'18.81E	Farm Portion
79	UITKIJK	147	0	27°27'36.53S	26°53'42.26E	Farm Portion
80	DOORNDRAAI EAST	235	0	27°26'30.67S	26°55'15.99E	Farm Portion
81	SPITSHOEK	868	0	27°27'39.94S	26°49'46.17E	Farm Portion
82	DEVON	78	0	27°21'39.46S	26°51'43.35E	Farm Portion
83	HEBRON	107	0	27°21'47.51S	26°55'38.96E	Farm Portion
84	BLESBOKLAAGTE	250	4	27°23'7.9S	26°55'47.22E	Farm Portion
85	GRASPAN	16	0	27°22'22.69S	26°50'37.1E	Farm Portion

86	RUSTPAN	1147	6	27°25'11.7S	26°53'53.43E	Farm Portion
----	---------	------	---	-------------	--------------	--------------

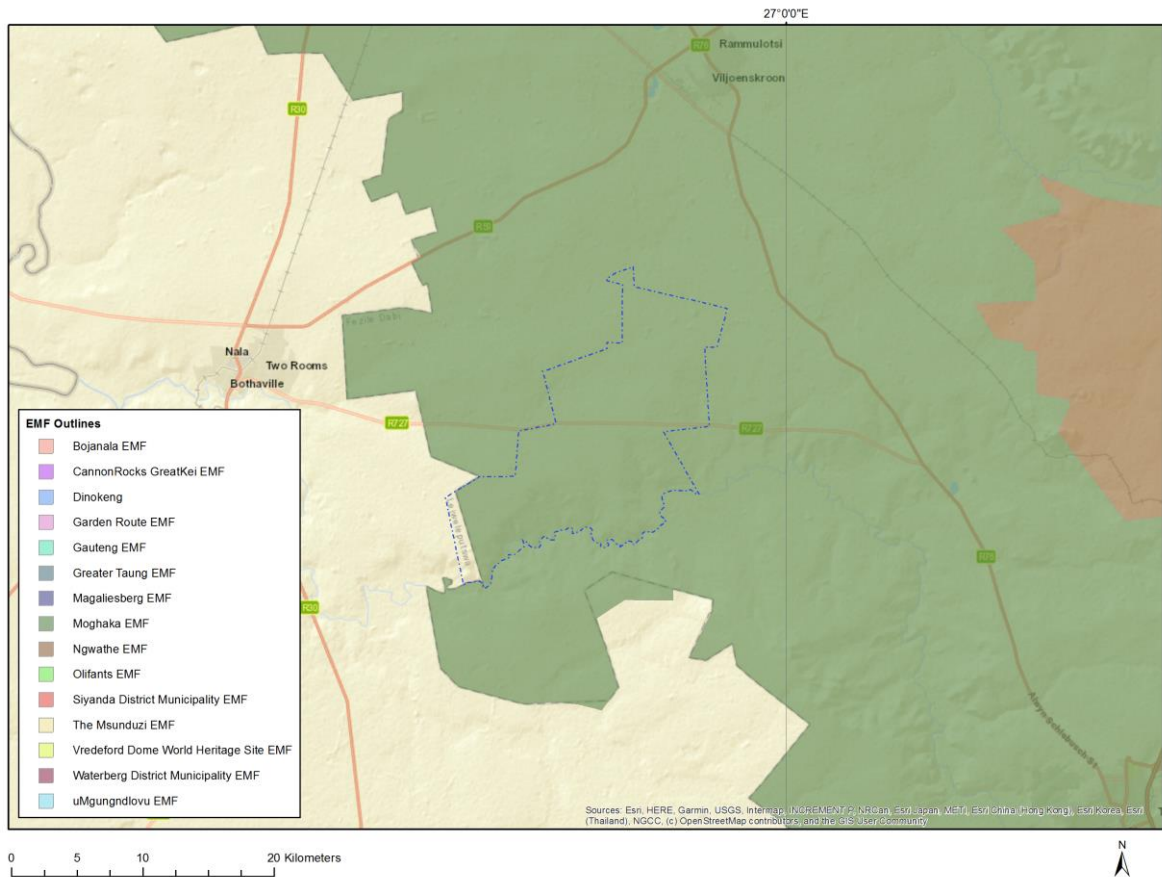
Development footprint¹ vertices:
No development footprint(s) specified.

Wind and Solar developments with an approved Environmental Authorisation or applications under consideration within 30 km of the proposed area

No	EIA Reference No	Classification	Status of application	Distance from proposed area (km)
1	14/12/16/3/3/1/2499	Solar PV	Approved	24.4
2	14/12/16/3/3/3/1/644/AM1	Solar PV	Approved	24.4
3	14/12/16/3/3/2/376/2	Solar PV	Approved	24.4
4	14/12/16/3/3/2/376/1	Solar PV	Approved	24.4
5	14/12/16/3/3/2/376/AM2	Solar PV	Approved	24.4
6	14/12/16/3/3/3/1/644	Solar PV	Approved	24.4
7	14/12/16/3/3/1/2410	Solar PV	Approved	26.5
8	14/12/16/3/3/1/2543	Solar PV	Approved	26.6
9	14/12/16/3/3/2/376/2/AM6	Solar PV	Approved	24.4

¹ “development footprint”, means the area within the site on which the development will take place and includes all ancillary developments for example roads, power lines, boundary walls, paving etc. which require vegetation clearance or which will be disturbed and for which the application has been submitted.

Environmental Management Frameworks relevant to the application



Environmental Management Framework	LINK
Moghaka EMF	https://screening.environment.gov.za/ScreeningDownloads/EMF/Moghaka_EMF.pdf

Environmental screening results and assessment outcomes

The following sections contain a summary of any development incentives, restrictions, exclusions or prohibitions that apply to the proposed development site as well as the most environmental sensitive features on the site based on the site sensitivity screening results for the application classification that was selected. The application classification selected for this report is:

Mining | Prospecting rights.

Relevant development incentives, restrictions, exclusions or prohibitions

The following development incentives, restrictions, exclusions or prohibitions and their implications that apply to this site are indicated below.

Incentive, restriction or prohibition	Implication
Strategic Transmission Corridor-Central corridor	https://screening.environment.gov.za/ScreeningDownloads/Developmen

Proposed Development Area Environmental Sensitivity

The following summary of the development site environmental sensitivities is identified. Only the highest environmental sensitivity is indicated. The footprint environmental sensitivities for the proposed development footprint as identified, are indicative only and must be verified on site by a suitably qualified person before the specialist assessments identified below can be confirmed.

Theme	Very High sensitivity	High sensitivity	Medium sensitivity	Low sensitivity
Agriculture Theme		X		
Animal Species Theme			X	
Aquatic Biodiversity Theme	X			
Archaeological and Cultural Heritage Theme	X			
Civil Aviation Theme			X	
Defence Theme				X
Paleontology Theme	X			
Plant Species Theme				X
Terrestrial Biodiversity Theme	X			

Specialist assessments identified

Based on the selected classification, and the known impacts associated with the proposed development, the following list of specialist assessments have been identified for inclusion in the assessment report. It is the responsibility of the EAP to confirm this list and to motivate in the assessment report, the reason for not including any of the identified specialist study including the provision of photographic evidence of the site situation.

No	Specialist assessment	Assessment Protocol
1	Agricultural Impact Assessment	https://screening.environment.gov.za/ScreeningDownloads/AssessmentProtocols/Gazetted_General_Agriculture_Assessment_Protocols.pdf
2	Archaeological and Cultural Heritage Impact Assessment	https://screening.environment.gov.za/ScreeningDownloads/AssessmentProtocols/Gazetted_General_Requirement_Assessment_Protocols.pdf
3	Palaeontology Impact Assessment	https://screening.environment.gov.za/ScreeningDownloads/AssessmentProtocols/Gazetted_General_Requirement_Assessment_Protocols.pdf
4	Terrestrial Biodiversity Impact Assessment	https://screening.environment.gov.za/ScreeningDownloads/AssessmentProtocols/Gazetted_Terrestrial_Biodiversity_Assessment_Protocols.pdf
5	Aquatic Biodiversity Impact Assessment	https://screening.environment.gov.za/ScreeningDownloads/AssessmentProtocols/Gazetted_Aquatic_Biodiversity_Assessment_Protocols.pdf
6	Noise Impact Assessment	https://screening.environment.gov.za/ScreeningDownloads/AssessmentProtocols/Gazetted_Noise_Impacts_Assessment_Protocol.pdf
7	Radioactivity Impact	https://screening.environment.gov.za/ScreeningDownloads/AssessmentProtocols/Gazetted_Radioactivity_Assessment_Protocol.pdf

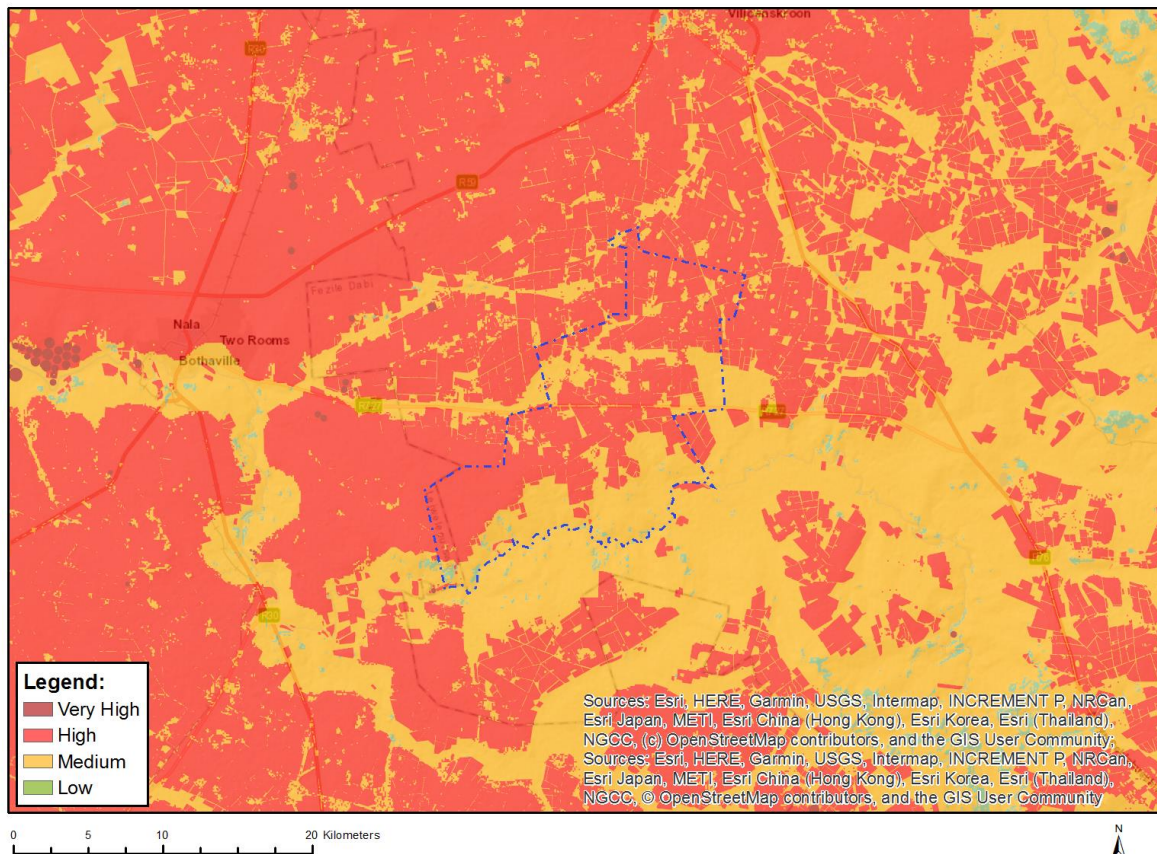
	Assessment	ssmentProtocols/Gazetted_General_Requirement_Assessment_Protocols.pdf
8	Plant Species Assessment	https://screening.environment.gov.za/ScreeningDownloads/AssessmentProtocols/Gazetted_Plant_Species_Assessment_Protocols.pdf
9	Animal Species Assessment	https://screening.environment.gov.za/ScreeningDownloads/AssessmentProtocols/Gazetted_Animal_Species_Assessment_Protocols.pdf

OFFICIAL

Results of the environmental sensitivity of the proposed area.

The following section represents the results of the screening for environmental sensitivity of the proposed site for relevant environmental themes associated with the project classification. It is the duty of the EAP to ensure that the environmental themes provided by the screening tool are comprehensive and complete for the project. Refer to the disclaimer.

MAP OF RELATIVE AGRICULTURE THEME SENSITIVITY

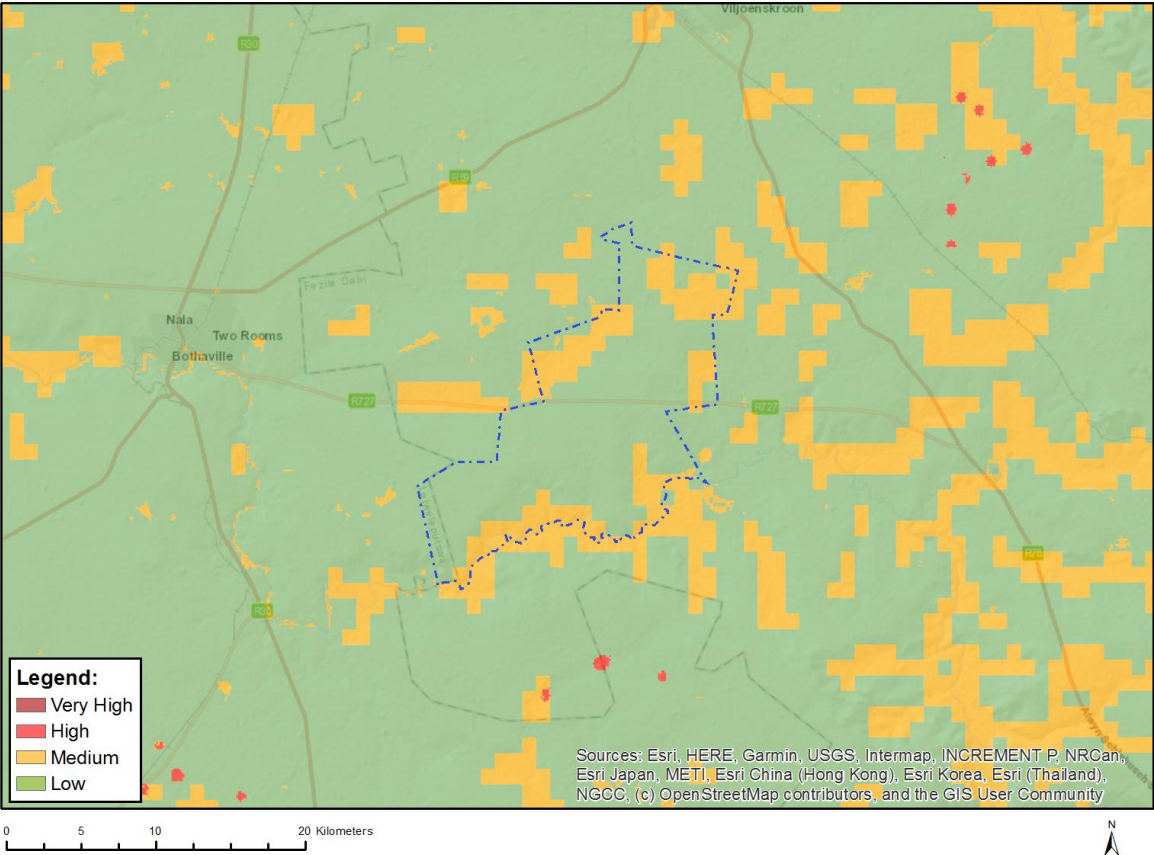


Very High sensitivity	High sensitivity	Medium sensitivity	Low sensitivity
	X		

Sensitivity Features:

Sensitivity	Feature(s)
High	Land capability;09. Moderate-High/10. Moderate-High
High	Annual Crop Cultivation / Planted Pastures Rotation;Land capability;09. Moderate-High/10. Moderate-High
High	Annual Crop Cultivation / Planted Pastures Rotation;Land capability;06. Low-Moderate/07. Low-Moderate/08. Moderate
High	Old Fields;Land capability;06. Low-Moderate/07. Low-Moderate/08. Moderate
High	Old Fields;Land capability;09. Moderate-High/10. Moderate-High
High	Annual Crop Cultivation / Planted Pastures Rotation;Land capability;01. Very low/02. Very low/03. Low-Very low/04. Low-Very low/05. Low
Low	Land capability;01. Very low/02. Very low/03. Low-Very low/04. Low-Very low/05. Low

MAP OF RELATIVE ANIMAL SPECIES THEME SENSITIVITY



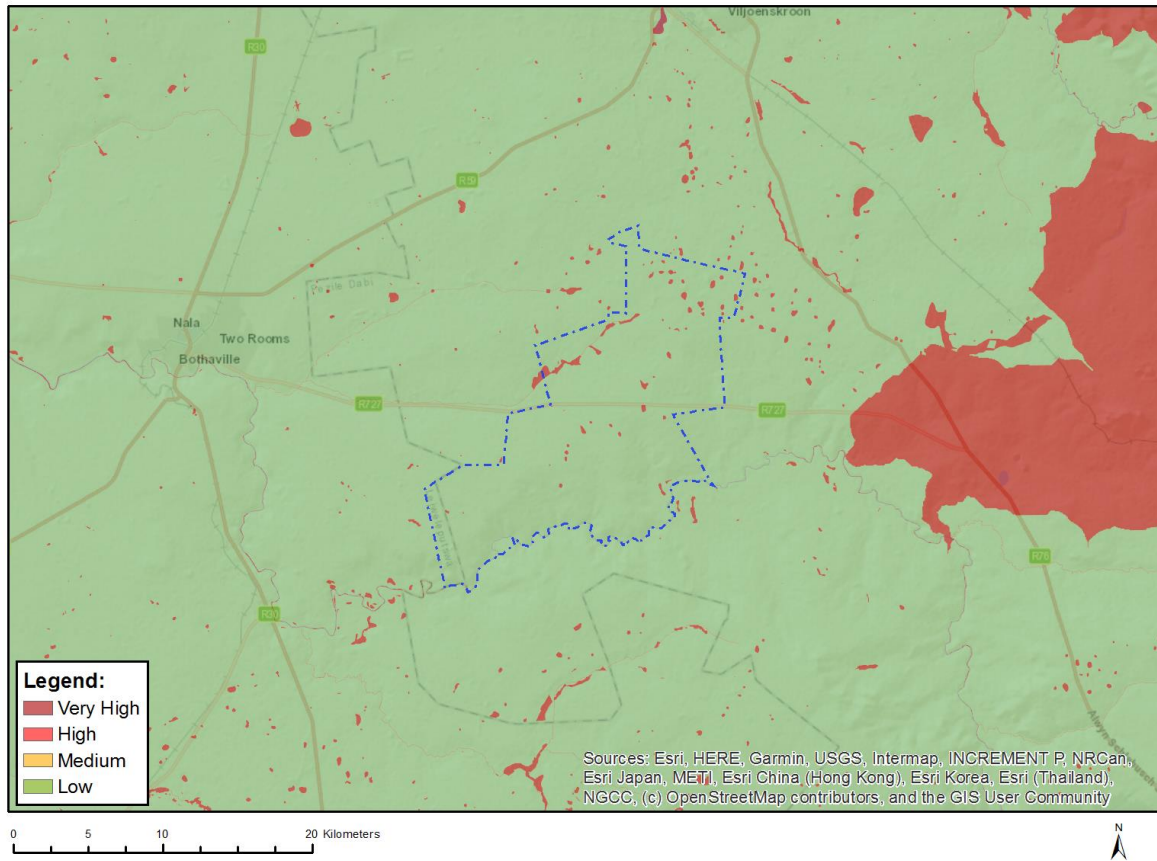
Where only a sensitive plant unique number or sensitive animal unique number is provided in the screening report and an assessment is required, the environmental assessment practitioner (EAP) or specialist is required to email SANBI at eiadatarequests@sanbi.org.za listing all sensitive species with their unique identifiers for which information is required. The name has been withheld as the species may be prone to illegal harvesting and must be protected. SANBI will release the actual species name after the details of the EAP or specialist have been documented.

Very High sensitivity	High sensitivity	Medium sensitivity	Low sensitivity
		X	

Sensitivity Features:

Sensitivity	Feature(s)
Low	Subject to confirmation
Medium	Aves-Hydroprogne caspia
Medium	Aves-Sagittarius serpentarius
Medium	Mammalia-Hydrictis maculicollis

MAP OF RELATIVE AQUATIC BIODIVERSITY THEME SENSITIVITY

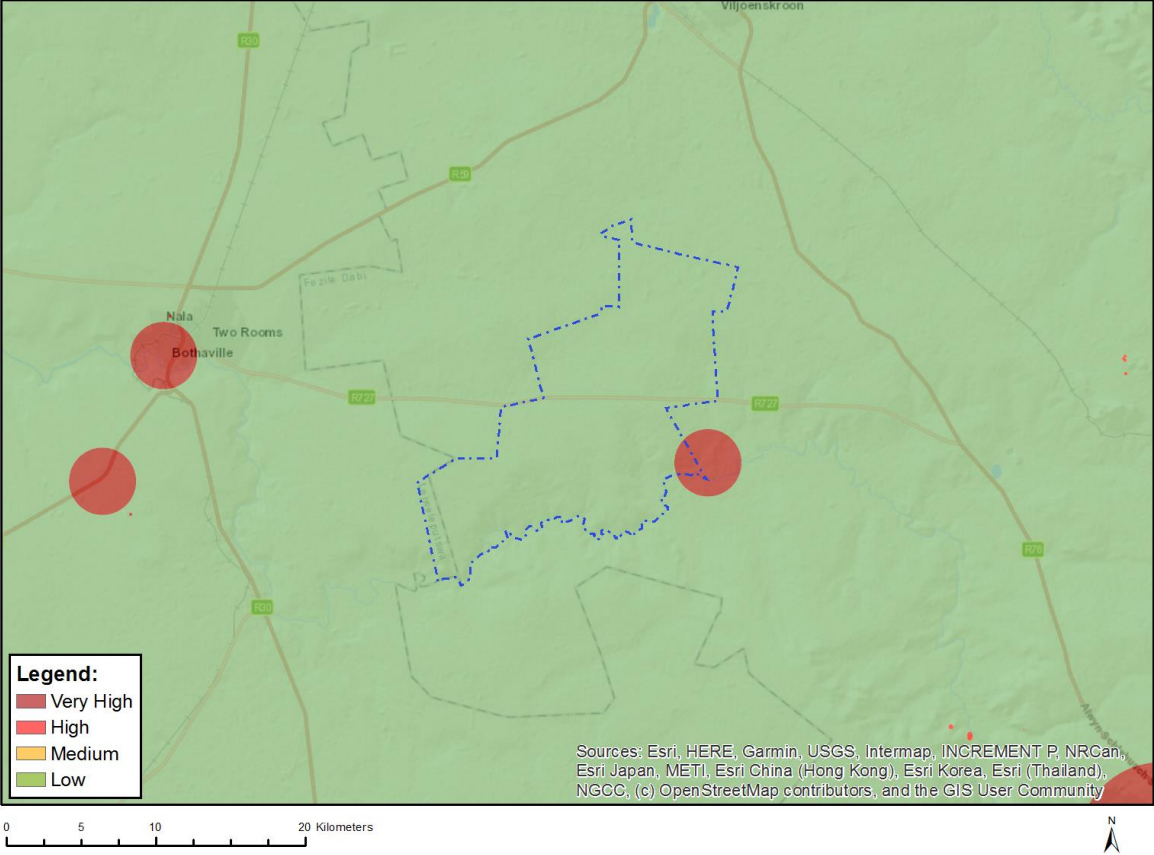


Very High sensitivity	High sensitivity	Medium sensitivity	Low sensitivity
X			

Sensitivity Features:

Sensitivity	Feature(s)
Low	Low sensitivity
Very High	Rivers_C
Very High	Rivers_Z
Very High	Wetlands_(River)
Very High	Wetlands_Dry Highveld Grassland Bioregion (Depression)
Very High	Wetlands_Dry Highveld Grassland Bioregion (Seep)

MAP OF RELATIVE ARCHAEOLOGICAL AND CULTURAL HERITAGE THEME SENSITIVITY

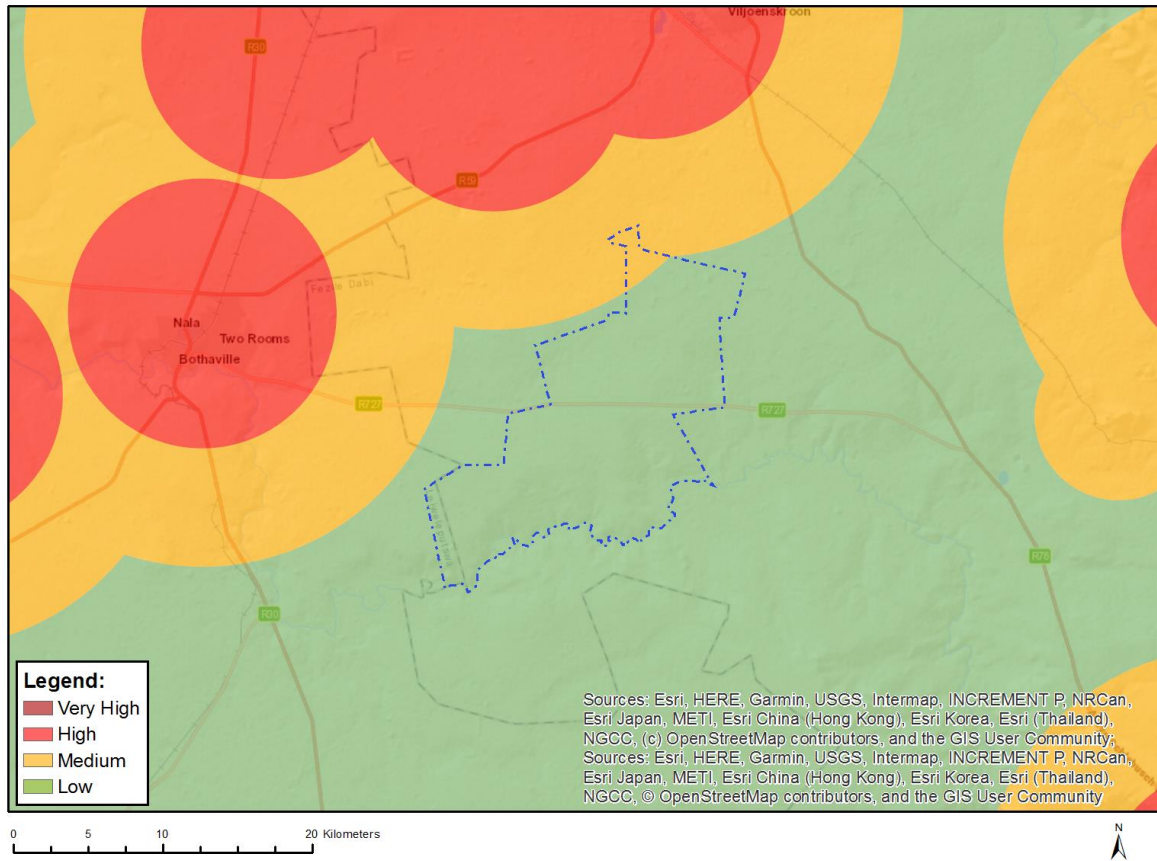


Very High sensitivity	High sensitivity	Medium sensitivity	Low sensitivity
X			

Sensitivity Features:

Sensitivity	Feature(s)
Low	Low sensitivity
Very High	Within 2km of a Grade II Heritage site

MAP OF RELATIVE CIVIL AVIATION THEME SENSITIVITY

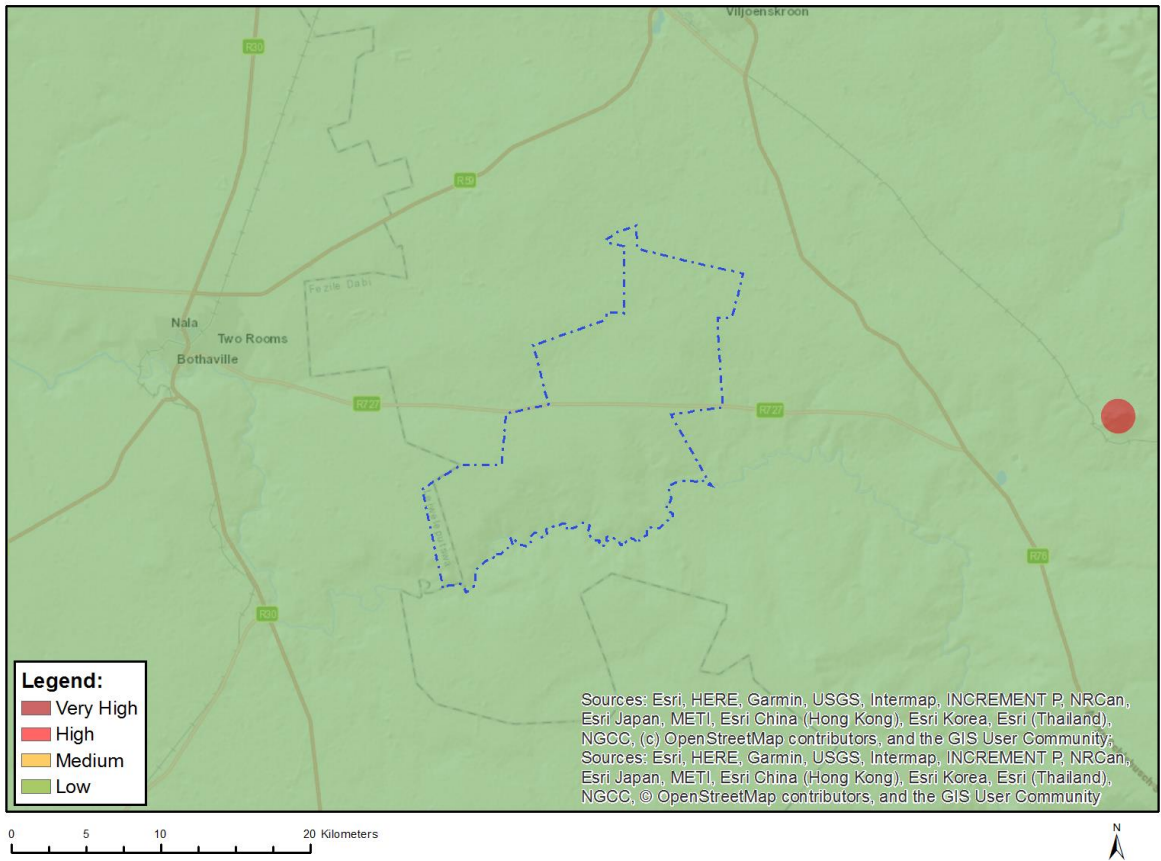


Very High sensitivity	High sensitivity	Medium sensitivity	Low sensitivity
		X	

Sensitivity Features:

Sensitivity	Feature(s)
Low	Low sensitivity
Medium	Between 8 and 15 km of other civil aviation aerodrome

MAP OF RELATIVE DEFENCE THEME SENSITIVITY

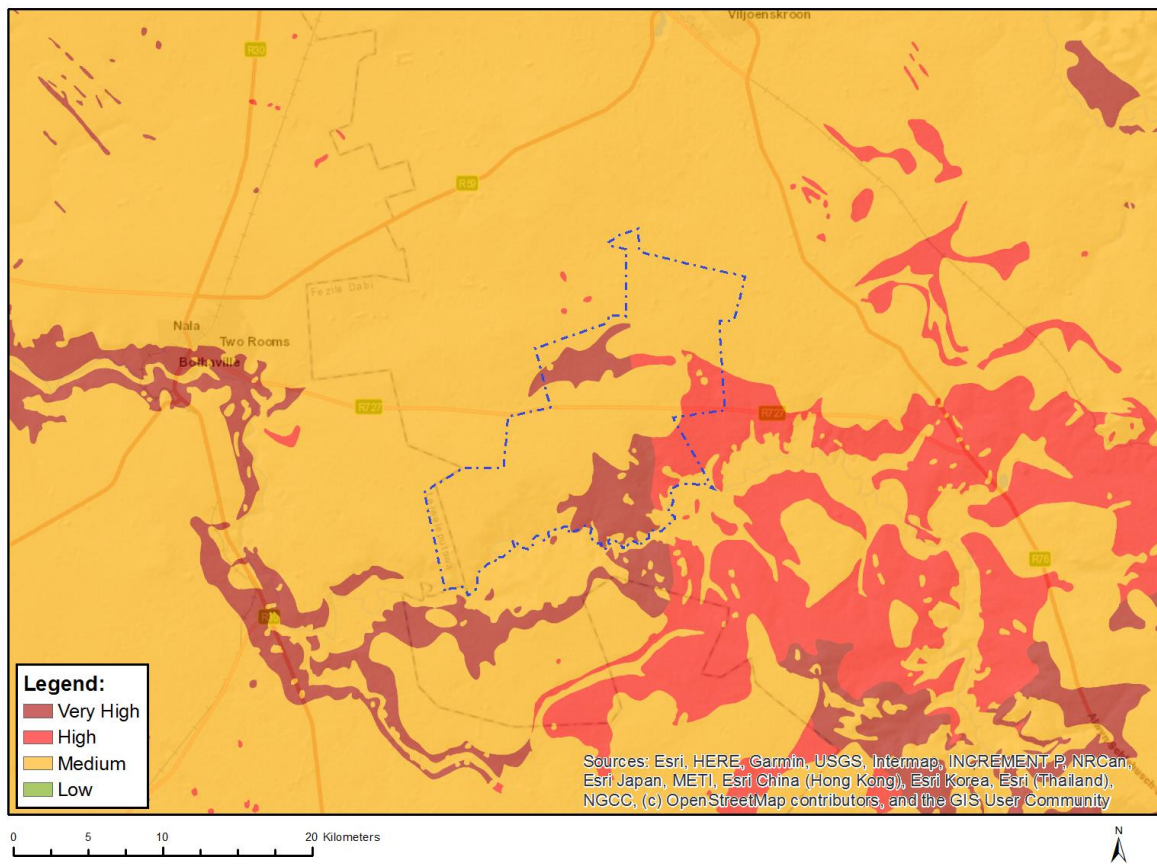


Very High sensitivity	High sensitivity	Medium sensitivity	Low sensitivity
			X

Sensitivity Features:

Sensitivity	Feature(s)
Low	Low Sensitivity

MAP OF RELATIVE PALEONTOLOGY THEME SENSITIVITY

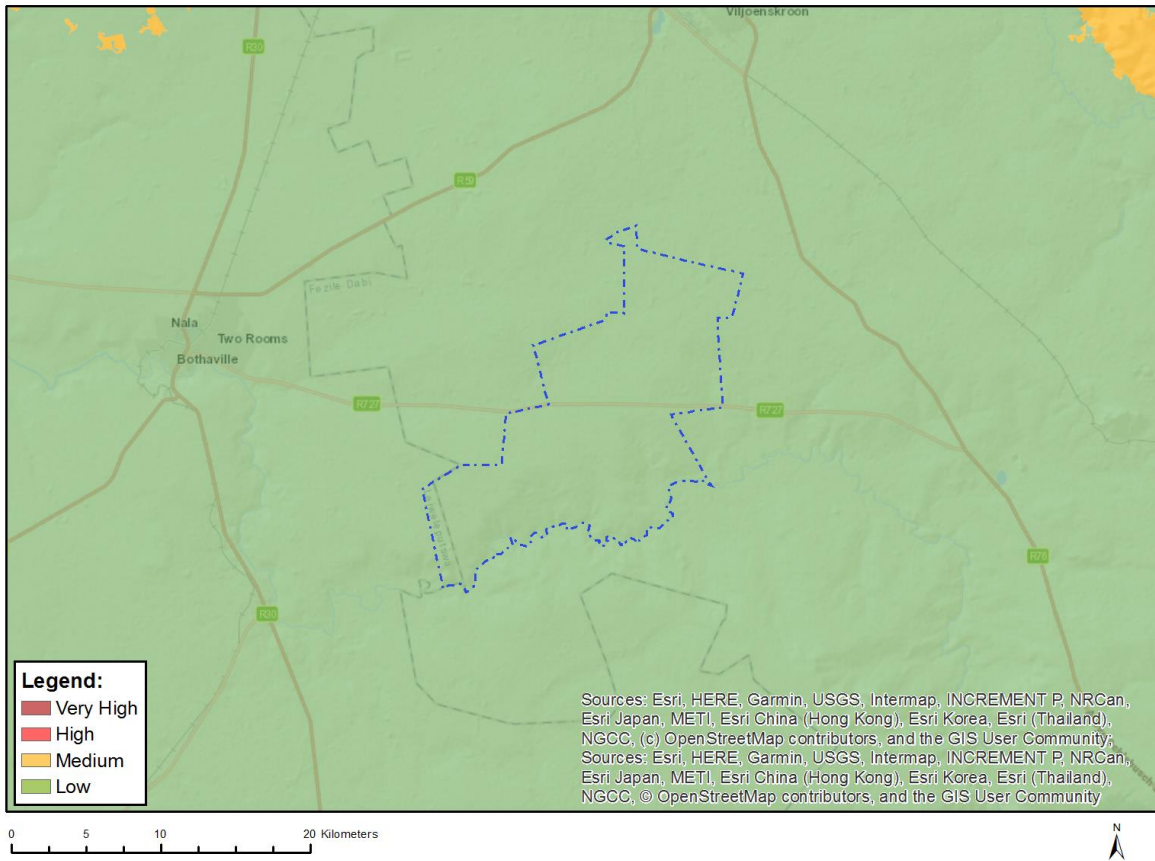


Very High sensitivity	High sensitivity	Medium sensitivity	Low sensitivity
X			

Sensitivity Features:

Sensitivity	Feature(s)
High	Features with a High paleontological sensitivity
Medium	Features with a Medium paleontological sensitivity
Very High	Features with a Very High paleontological sensitivity

MAP OF RELATIVE PLANT SPECIES THEME SENSITIVITY



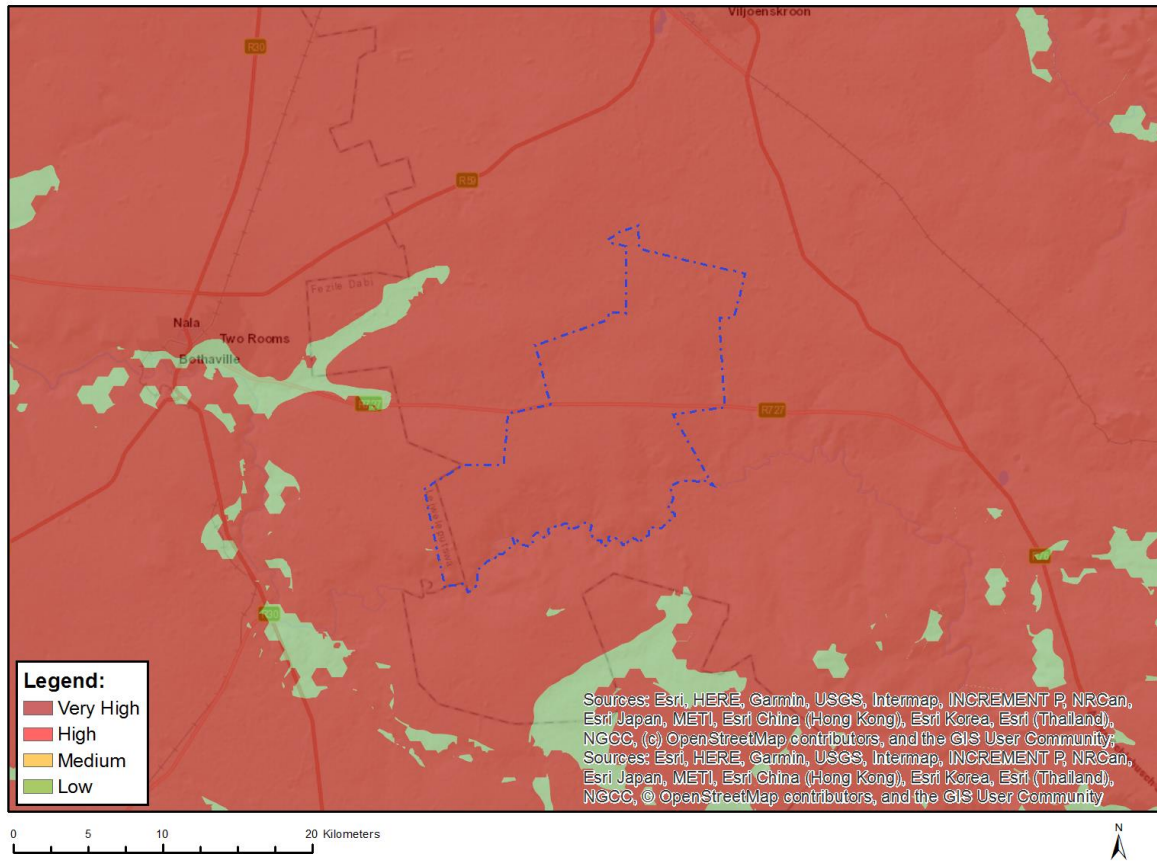
Where only a sensitive plant unique number or sensitive animal unique number is provided in the screening report and an assessment is required, the environmental assessment practitioner (EAP) or specialist is required to email SANBI at eiadatarequests@sanbi.org.za listing all sensitive species with their unique identifiers for which information is required. The name has been withheld as the species may be prone to illegal harvesting and must be protected. SANBI will release the actual species name after the details of the EAP or specialist have been documented.

Very High sensitivity	High sensitivity	Medium sensitivity	Low sensitivity
			X

Sensitivity Features:

Sensitivity	Feature(s)
Low	Low Sensitivity

MAP OF RELATIVE TERRESTRIAL BIODIVERSITY THEME SENSITIVITY



Very High sensitivity	High sensitivity	Medium sensitivity	Low sensitivity
X			

Sensitivity Features:

Sensitivity	Feature(s)
Very High	CBA 1
Very High	CBA 2
Very High	ESA 1
Very High	ESA 2
Very High	National Protected Area Expansion Strategy (NPAES)
Very High	EN_Vaal-Vet Sandy Grassland