

**SCREENING REPORT FOR AN ENVIRONMENTAL AUTHORIZATION AS
REQUIRED BY THE 2014 EIA REGULATIONS – PROPOSED SITE
ENVIRONMENTAL SENSITIVITY**

EIA Reference number:

Project name: New Kroonstad North

Project title: New Kroonstad North

Date screening report generated: 04/03/2024 10:01:00

Applicant: White Rivers Exploration (Pty) Ltd

Compiler: Shango Solutions

Compiler signature:

.....

Application Category: Mining|Prospecting rights

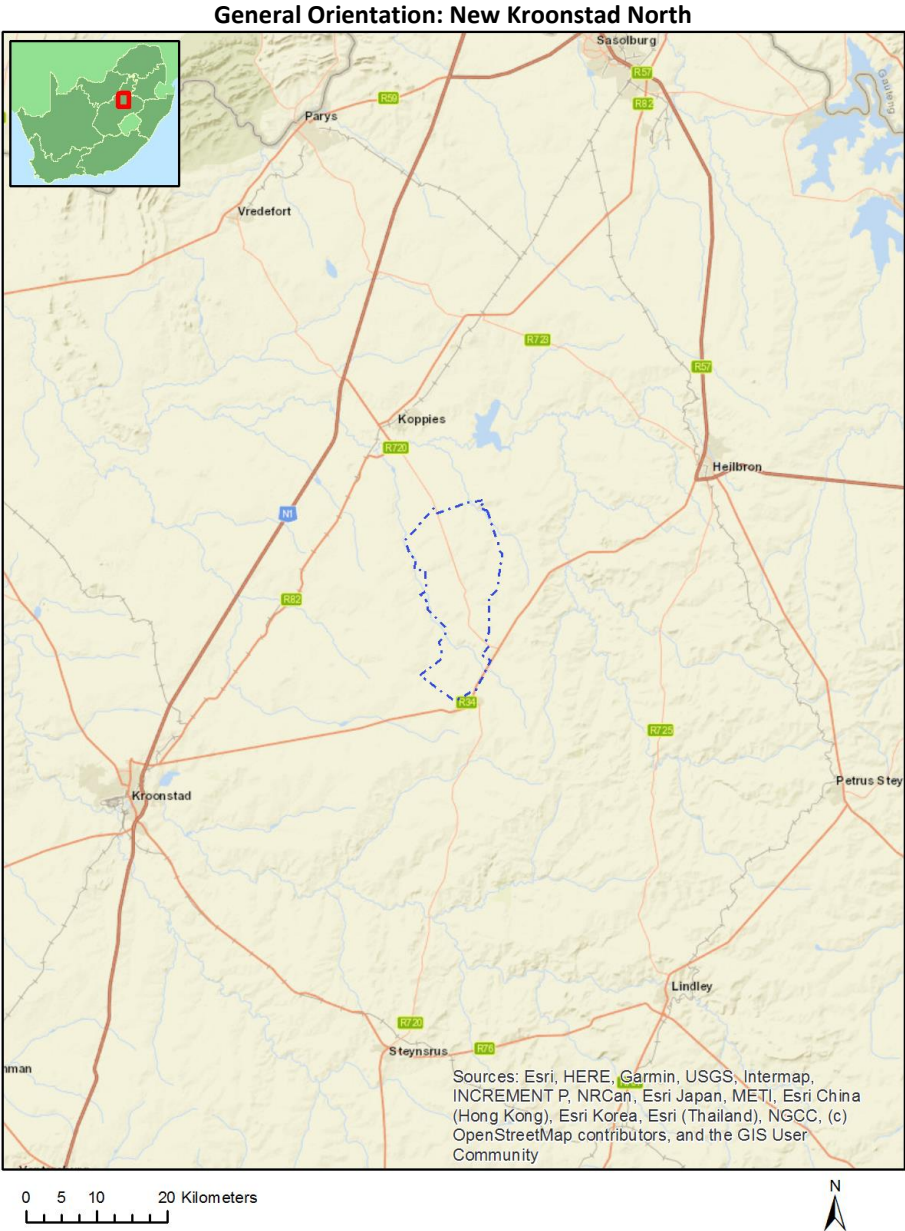
OFFICIAL

Table of Contents

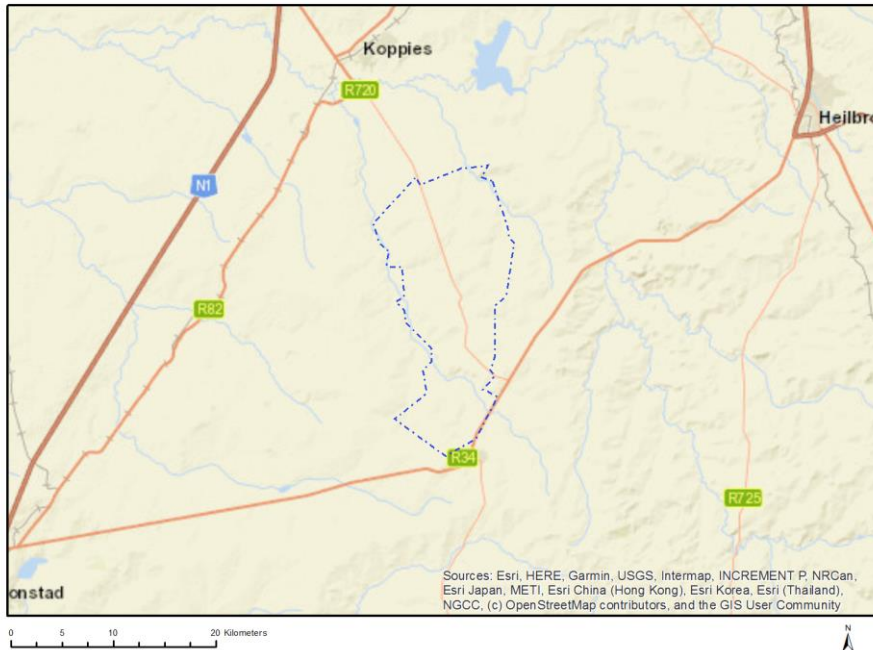
- Proposed Project Location 3
 - Orientation map 1: General location 3
- Map of proposed site and relevant area(s) 4
 - Cadastral details of the proposed site 4
 - Wind and Solar developments with an approved Environmental Authorisation or applications under consideration within 30 km of the proposed area 7
 - Environmental Management Frameworks relevant to the application 8
- Environmental screening results and assessment outcomes 8
 - Relevant development incentives, restrictions, exclusions or prohibitions 8
 - Proposed Development Area Environmental Sensitivity 9
 - Specialist assessments identified 9
- Results of the environmental sensitivity of the proposed area 11
 - MAP OF RELATIVE AGRICULTURE THEME SENSITIVITY 11
 - MAP OF RELATIVE ANIMAL SPECIES THEME SENSITIVITY 12
 - MAP OF RELATIVE AQUATIC BIODIVERSITY THEME SENSITIVITY 13
 - MAP OF RELATIVE ARCHAEOLOGICAL AND CULTURAL HERITAGE THEME SENSITIVITY 14
 - MAP OF RELATIVE CIVIL AVIATION THEME SENSITIVITY 15
 - MAP OF RELATIVE DEFENCE THEME SENSITIVITY 16
 - MAP OF RELATIVE PALEONTOLOGY THEME SENSITIVITY 17
 - MAP OF RELATIVE PLANT SPECIES THEME SENSITIVITY 18
 - MAP OF RELATIVE TERRESTRIAL BIODIVERSITY THEME SENSITIVITY 19

Proposed Project Location

Orientation map 1: General location



Map of proposed site and relevant area(s)



Cadastral details of the proposed site

Property details:

No	Farm Name	Farm/ Erf No	Portion	Latitude	Longitude	Property Type
1	NGWATHE	938	0	27°32'58.93S	27°39'11.62E	Erven
2	NGWATHE	920	0	27°32'57.09S	27°39'14.2E	Erven
3	NGWATHE	209	0	27°32'52.42S	27°39'24.09E	Erven
4	GESKENK	173	0	27°25'20.5S	27°43'21.56E	Farm
5	SWAARVERDIEND 175	48	0	27°22'52.79S	27°41'8.66E	Farm
6	SPEC BONA	55	0	27°24'33.12S	27°39'45.87E	Farm
7	BRAKSPRUIT	2071	0	27°30'52.6S	27°37'33.08E	Farm
8	FRAAIUITZICHT	1453	0	27°30'28.27S	27°39'32.04E	Farm
9	DANKBAAR	1444	0	27°31'1.3S	27°39'1.7E	Farm
10	KLIPKUIL "A"	229	0	27°31'46S	27°36'55.41E	Farm
11	"SCHOONGEZIGT"	206	0	27°20'42.03S	27°40'13.98E	Farm
12	DOORN RAND	261	0	27°29'6.56S	27°39'38.18E	Farm
13	ZWAGERSHOEKWEST	86	0	27°19'41.98S	27°39'16.88E	Farm
14		90	0	27°25'28.19S	27°40'38.55E	Farm
15	TOCHGEKRYGEN	338	0	27°23'15.67S	27°38'42.16E	Farm
16	DRIEHOEK	130	0	27°26'57.83S	27°38'30.82E	Farm
17	PAARDEKRAAL	253	0	27°30'3.4S	27°41'37.78E	Farm
18	ZAMENLOOP	35	0	27°27'23.64S	27°37'51.29E	Farm
19		397	0	27°28'4.87S	27°38'15.67E	Farm
20	RIETKUIL	313	0	27°21'12.25S	27°35'48.49E	Farm
21	VERDRUK	796	0	27°27'40.21S	27°41'33.01E	Farm
22		41	0	27°24'49.02S	27°39'55.89E	Farm
23	MIZPA	42	0	27°23'53.93S	27°42'9.95E	Farm
24	RIETGAT	380	0	27°23'17.87S	27°34'2.15E	Farm
25	DOORNDAM	314	0	27°22'1.48S	27°36'28.83E	Farm
26	ZWARTFONTEIN	432	0	27°26'38.28S	27°37'57.7E	Farm
27	MOOIVLEY	1458	0	27°31'14.87S	27°40'32.08E	Farm

28	ERFENIS	30	0	27°26'54.88S	27°40'46.44E	Farm
29	THE TOWN LANDS OF EDENVILLE	552	0	27°33'15.38S	27°40'33.36E	Farm
30	KLEIN VIERFONTEIN	218	0	27°29'39.83S	27°37'21.67E	Farm
31	MEYERTON 339	52	0	27°23'2.73S	27°39'5.33E	Farm
32	MOOIDAM 4	53	0	27°23'57.84S	27°39'19.51E	Farm
33	SCHURWEPOORT	448	0	27°26'8.91S	27°35'12.65E	Farm
34	ROOIBULT	345	0	27°26'39.37S	27°36'8.09E	Farm
35		415	0	27°21'58.59S	27°42'8.42E	Farm
36	SERPINE	2141	0	27°32'5.57S	27°38'34.57E	Farm
37	UITKYK	17	0	27°20'16.58S	27°42'9.99E	Farm
38		290	0	27°22'55.19S	27°43'30.48E	Farm
39		245	0	27°24'25.05S	27°39'26.16E	Farm
40	WELGELEGEN	203	0	27°33'9.4S	27°39'10.51E	Farm
41	HOUTKRAAL	267	0	27°21'54.84S	27°38'8.97E	Farm
42	KORENHOF	1457	0	27°31'12.41S	27°41'37.34E	Farm
43	DANKBAAR	2069	0	27°30'37.42S	27°37'11.26E	Farm
44	EBENHAEZER	1455	0	27°32'16.6S	27°41'10.28E	Farm
45	VLAKPAN	1914	0	27°29'10.23S	27°40'42.98E	Farm
46	STRYDFONTEIN 43	11	0	27°25'5.26S	27°40'4.32E	Farm
47		82	0	27°24'58.42S	27°42'24.5E	Farm
48	STILLEDAL	53	0	27°32'26.69S	27°39'24.48E	Farm
49	LUSTHOF	1456	0	27°29'45.77S	27°40'17.56E	Farm
50	ADAM'S VLUGT	386	0	27°19'28.4S	27°42'0.3E	Farm
51	ERFPLAATS	423	0	27°24'29.56S	27°34'26.08E	Farm
52	WAAIHOEK 101	49	0	27°22'8.81S	27°41'5.52E	Farm
53	HOUTKOP	326	0	27°23'18.55S	27°37'14.15E	Farm
54	RONDEBULT	1445	0	27°29'0.23S	27°41'35.41E	Farm
55	KLIPKUIL B	1138	0	27°31'43.43S	27°38'55.65E	Farm
56	BURMAH	608	0	27°31'22.22S	27°37'52.72E	Farm
57	GESCHENK	137	0	27°23'58.23S	27°38'43.51E	Farm
58	STERKWATER	2334	0	27°32'33.83S	27°38'15.11E	Farm
59		234	0	27°25'26.69S	27°36'56.9E	Farm
60	RUEBENS DEEL 178	50	0	27°21'38.88S	27°40'32.88E	Farm
61	TABOR 460	51	0	27°21'14.87S	27°38'37.32E	Farm
62	WASGAT	468	0	27°25'23.35S	27°36'49.39E	Farm
63	SCHURWEPOORT OOST	255	0	27°24'4.19S	27°37'3.03E	Farm
64	BRAKSPRUIT	431	0	27°31'8.91S	27°36'23.26E	Farm
65	BLESBOKKRAAL	287	0	27°21'9.31S	27°39'37E	Farm
66	BENTEVREDEN	282	0	27°28'13.27S	27°39'31.54E	Farm
67	UITKOMST	25	0	27°25'7.15S	27°38'9.49E	Farm
68	MOEDERSDEEL	158	0	27°29'40.07S	27°38'11.93E	Farm
69	VRIJHEID	33	0	27°27'16.39S	27°38'51.5E	Farm
70	ZWAGERSHOEK	186	0	27°20'34.42S	27°38'5.44E	Farm
71	DOORNSPRUIT	319	0	27°28'19.69S	27°37'7.42E	Farm
72	BUFFELDOORN	454	0	27°19'23.03S	27°38'5.25E	Farm
73	GRASPAN	331	0	27°26'45.82S	27°38'16.09E	Farm
74	WILGEBOOM DRAAI	794	0	27°26'11.94S	27°41'39.01E	Farm
75	WOLVEKUIL	396	0	27°26'14.27S	27°38'59.31E	Farm
76	JOHANNA'S RUST	434	0	27°26'44.46S	27°37'13.76E	Farm
77	DOORNHOEK	349	0	27°28'48.44S	27°37'34.98E	Farm
78	BUFFELDOORN	454	1	27°19'54.2S	27°37'33.15E	Farm Portion
79	KLIPKUIL "A"	229	0	27°31'46S	27°36'55.41E	Farm Portion
80		82	0	27°24'59.98S	27°42'46.91E	Farm Portion
81		460	0	27°21'20.36S	27°38'40.96E	Farm Portion
82		90	0	27°25'27.88S	27°40'38.43E	Farm Portion
83		41	0	27°24'47.71S	27°39'58.36E	Farm Portion
84	DOORNDAM	314	0	27°22'0.95S	27°36'33.55E	Farm Portion
85	ERFPLAATS	423	0	27°24'4.27S	27°34'26.03E	Farm Portion
86	ZWAGERSHOEK	186	0	27°20'34.42S	27°38'5.44E	Farm Portion

87	ERFENIS	30	2	27°26'56.06S	27°41'5.83E	Farm Portion
88	RONDEBULT	1445	1	27°29'11.26S	27°41'51.3E	Farm Portion
89		43	0	27°25'4.69S	27°40'4.64E	Farm Portion
90	TOCHGEKRYGEN	338	0	27°23'15.13S	27°38'48.22E	Farm Portion
91	MOEDERSDEEL	158	0	27°29'35.25S	27°38'10.66E	Farm Portion
92	UITKYK	17	1	27°20'2.17S	27°41'39.84E	Farm Portion
93	DOORN RAND	261	0	27°29'6.56S	27°39'38.18E	Farm Portion
94		101	1	27°22'13.94S	27°41'11.94E	Farm Portion
95	RIETKUIL	313	0	27°21'19.52S	27°35'46.16E	Farm Portion
96	RONDEBULT	1445	2	27°28'37.93S	27°41'38.48E	Farm Portion
97	EBENHAEZER	1455	0	27°32'16.6S	27°41'10.28E	Farm Portion
98		178	1	27°22'11.71S	27°40'3.73E	Farm Portion
99	SCHURWEPOORT	448	0	27°26'42.18S	27°35'27.3E	Farm Portion
100	WOLVEKUIL	396	0	27°26'14.17S	27°39'4.32E	Farm Portion
101	ZWAGERSHOEKWEST	86	0	27°19'41.98S	27°39'16.88E	Farm Portion
102	UITKYK	17	2	27°20'34.42S	27°41'49.6E	Farm Portion
103	RIETKUIL	313	1	27°20'58.14S	27°35'53.03E	Farm Portion
104	HOUTKOP	326	1	27°23'27.67S	27°37'32.46E	Farm Portion
105	DRIEHOEK	130	0	27°26'57.83S	27°38'30.82E	Farm Portion
106	FRAAIUITZICHT	1453	0	27°30'28.27S	27°39'32.04E	Farm Portion
107		82	1	27°24'57.2S	27°41'36.32E	Farm Portion
108	RIETGAT	380	0	27°23'17.84S	27°34'6.43E	Farm Portion
109	UITKOMST	25	0	27°25'6.58S	27°38'14.36E	Farm Portion
110		339	0	27°23'0.71S	27°39'3.95E	Farm Portion
111	HOUTKOP	326	0	27°22'55.34S	27°37'13.37E	Farm Portion
112	MOOIVLEY	1458	0	27°31'14.87S	27°40'32.08E	Farm Portion
113	GESKENK	173	1	27°25'26.15S	27°42'54.32E	Farm Portion
114	LUSTHOF	1456	0	27°29'45.77S	27°40'17.56E	Farm Portion
115	MIZPA	42	4	27°23'45.77S	27°43'15.09E	Farm Portion
116	MIZPA	42	6	27°23'37.79S	27°40'54.59E	Farm Portion
117	GESCHENK	137	0	27°23'58.58S	27°38'48.36E	Farm Portion
118	JOHANNA'S RUST	434	1	27°26'46.72S	27°37'2.49E	Farm Portion
119	"SCHOONGEZIGT"	206	0	27°20'42.03S	27°40'13.98E	Farm Portion
120	STILLEDAL	53	1	27°32'34.06S	27°39'28.6E	Farm Portion
121	ROOIBULT	345	1	27°26'2.45S	27°36'23.2E	Farm Portion
122	KWAKWATSI	462	0	27°22'58.11S	27°41'9.42E	Farm Portion
123		290	0	27°22'59.31S	27°43'31.65E	Farm Portion
124		268	0	27°24'15.83S	27°40'4.1E	Farm Portion
125		245	0	27°24'25.73S	27°39'27.38E	Farm Portion
126	SERPINE	2141	0	27°32'7.37S	27°38'34.78E	Farm Portion
127	WELGELEGEN	203	1	27°32'51.11S	27°39'37.8E	Farm Portion
128	BURMAH	608	0	27°31'22.22S	27°37'52.72E	Farm Portion
129	KORENHOF	1457	0	27°31'12.41S	27°41'37.34E	Farm Portion
130	MIZPA	42	3	27°24'31.93S	27°43'3.68E	Farm Portion
131	MIZPA	42	5	27°23'51.31S	27°42'1.83E	Farm Portion
132	JOHANNA'S RUST	434	0	27°26'43.97S	27°37'30.19E	Farm Portion
133	HOUTKRAAL	267	0	27°21'55.19S	27°38'15.18E	Farm Portion
134	THE TOWN LANDS OF EDENVILLE	552	0	27°33'21.02S	27°40'32.06E	Farm Portion
135	ZAMENLOOP	35	1	27°27'16.05S	27°38'16.69E	Farm Portion
136	VRIJHEID	33	0	27°27'16.39S	27°38'51.5E	Farm Portion
137	SCHURWEPOORT OOST	255	0	27°23'59.26S	27°36'34.9E	Farm Portion
138	DANKBAAR	1444	0	27°31'1.3S	27°39'1.7E	Farm Portion
139	RONDEBULT	1445	0	27°28'55.94S	27°41'15.12E	Farm Portion
140		461	0	27°21'58.33S	27°40'40.67E	Farm Portion
141		415	0	27°21'57.23S	27°42'8E	Farm Portion
142	ROOIBULT	345	0	27°26'39.41S	27°36'12.77E	Farm Portion
143	MOEDERSDEEL	158	1	27°30'8.89S	27°38'19.55E	Farm Portion
144	WILGEBOOM DRAAI	794	1	27°26'16.99S	27°41'32.03E	Farm Portion
145	STERKWATER	2334	1	27°32'39.06S	27°38'21.88E	Farm Portion

146	STERKWATER	2334	0	27°32'16.29S	27°37'48.9E	Farm Portion
147	VLAKPAN	1914	0	27°29'10.23S	27°40'42.98E	Farm Portion
148	BENTEVREDEN	282	1	27°28'30.69S	27°39'42.49E	Farm Portion
149	BENTEVREDEN	282	0	27°27'55.79S	27°39'20.55E	Farm Portion
150	PAARDEKRAAL	253	0	27°30'3.4S	27°41'37.78E	Farm Portion
151	BRAKSPRUIT	431	0	27°31'8.91S	27°36'23.26E	Farm Portion
152	DANKBAAR	2069	0	27°30'37.42S	27°37'11.26E	Farm Portion
153	DOORNHOEK	349	0	27°28'44.37S	27°37'46.58E	Farm Portion
154	ADAM'S VLUGT	386	0	27°19'28.4S	27°42'0.3E	Farm Portion
155		175	1	27°22'34.66S	27°41'9.37E	Farm Portion
156	STILLEDAL	53	0	27°32'2.6S	27°39'28.16E	Farm Portion
157	WELGELEGEN	203	4	27°32'58.49S	27°39'28.53E	Farm Portion
158	WELGELEGEN	203	1	27°32'54.98S	27°39'18.77E	Farm Portion
159	ZWARTFONTEIN	432	0	27°26'38.28S	27°37'57.7E	Farm Portion
160		178	0	27°20'59.11S	27°40'44.31E	Farm Portion
161	ZAMENLOOP	35	0	27°27'27.16S	27°37'39.52E	Farm Portion
162	WASGAT	468	0	27°25'24.66S	27°36'51.87E	Farm Portion
163	WELGELEGEN	203	0	27°32'46.91S	27°39'47.51E	Farm Portion
164	BRAKSPRUIT	2071	0	27°30'52.6S	27°37'33.08E	Farm Portion
165	WILGEBOOM DRAAI	794	0	27°26'1.95S	27°41'52.81E	Farm Portion
166		4	0	27°23'57.32S	27°39'20.6E	Farm Portion
167	KLIPKUIL B	1138	0	27°31'45.63S	27°38'55.58E	Farm Portion
168	WELGELEGEN	203	6	27°33'1.91S	27°39'10.5E	Farm Portion
169	KLEIN VIERFONTEIN	218	0	27°29'49.87S	27°37'25.72E	Farm Portion
170	BLESBOKKRAAL	287	0	27°21'9.31S	27°39'37E	Farm Portion
171	SCHURWEPOORT OOST	255	1	27°24'25.73S	27°37'49.53E	Farm Portion
172	GRASPAN	331	0	27°26'45.82S	27°38'16.09E	Farm Portion
173	DOORNSPRUIT	319	0	27°28'19.69S	27°37'7.42E	Farm Portion
174	ERFPLAATS	423	1	27°24'54.06S	27°34'36.62E	Farm Portion
175		397	0	27°28'4.87S	27°38'15.67E	Farm Portion
176	ERFENIS	30	0	27°26'53.68S	27°40'26.64E	Farm Portion
177		264	1	27°24'48.61S	27°39'27.34E	Farm Portion
178	VERDRUK	796	0	27°27'22.44S	27°41'32.1E	Farm Portion
179	DOORNHOEK	349	1	27°28'52.53S	27°37'23.37E	Farm Portion

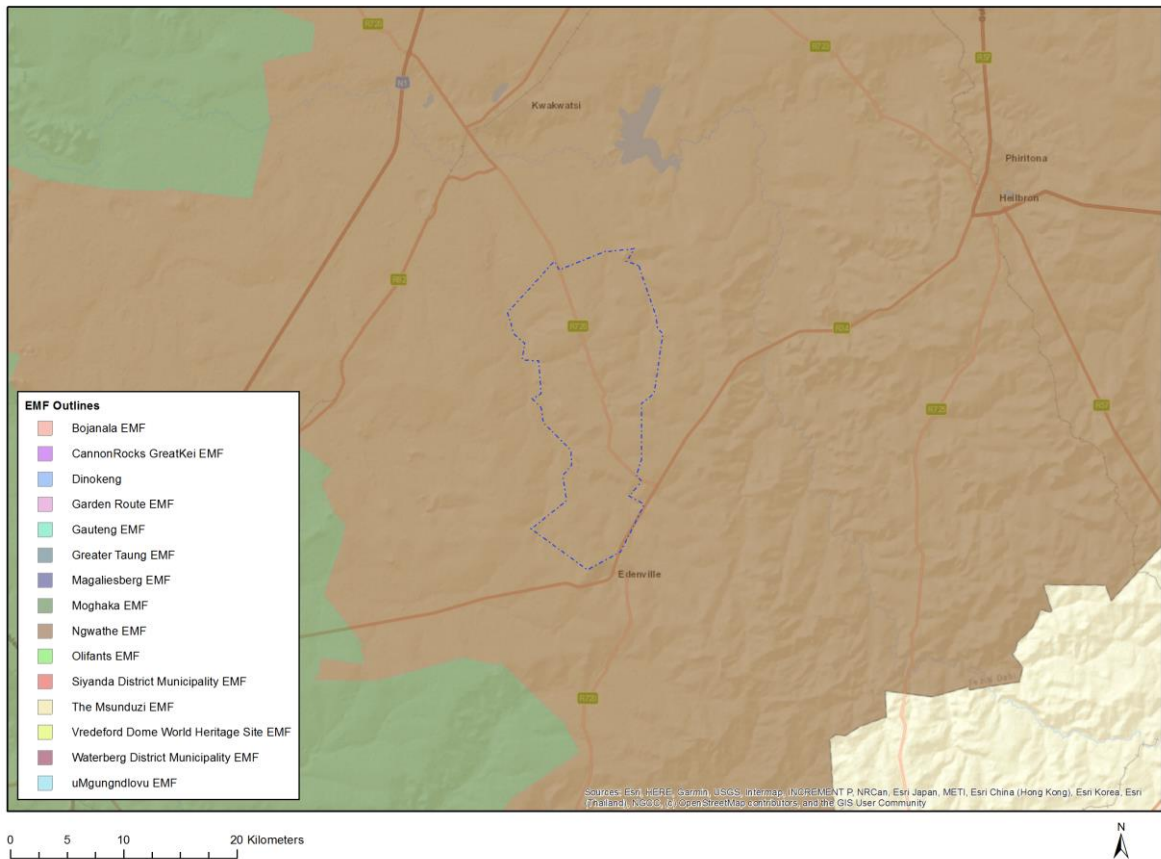
Development footprint¹ vertices:
No development footprint(s) specified.

Wind and Solar developments with an approved Environmental Authorisation or applications under consideration within 30 km of the proposed area

No nearby wind or solar developments found.

¹ "development footprint", means the area within the site on which the development will take place and includes all ancillary developments for example roads, power lines, boundary walls, paving etc. which require vegetation clearance or which will be disturbed and for which the application has been submitted.

Environmental Management Frameworks relevant to the application



Environmental Management Framework	LINK
Ngwathe EMF	https://screening.environment.gov.za/ScreeningDownloads/EMF/Ngwathe_EMF_SummaryReport.pdf

Environmental screening results and assessment outcomes

The following sections contain a summary of any development incentives, restrictions, exclusions or prohibitions that apply to the proposed development site as well as the most environmental sensitive features on the site based on the site sensitivity screening results for the application classification that was selected. The application classification selected for this report is:

Mining | Prospecting rights.

Relevant development incentives, restrictions, exclusions or prohibitions

The following development incentives, restrictions, exclusions or prohibitions and their implications that apply to this site are indicated below.

No intersection with any development zones found.

Proposed Development Area Environmental Sensitivity

The following summary of the development site environmental sensitivities is identified. Only the highest environmental sensitivity is indicated. The footprint environmental sensitivities for the proposed development footprint as identified, are indicative only and must be verified on site by a suitably qualified person before the specialist assessments identified below can be confirmed.

Theme	Very High sensitivity	High sensitivity	Medium sensitivity	Low sensitivity
Agriculture Theme	X			
Animal Species Theme			X	
Aquatic Biodiversity Theme	X			
Archaeological and Cultural Heritage Theme	X			
Civil Aviation Theme			X	
Defence Theme				X
Paleontology Theme	X			
Plant Species Theme				X
Terrestrial Biodiversity Theme	X			

Specialist assessments identified

Based on the selected classification, and the known impacts associated with the proposed development, the following list of specialist assessments have been identified for inclusion in the assessment report. It is the responsibility of the EAP to confirm this list and to motivate in the assessment report, the reason for not including any of the identified specialist study including the provision of photographic evidence of the site situation.

No	Specialist assessment	Assessment Protocol
1	Agricultural Impact Assessment	https://screening.environment.gov.za/ScreeningDownloads/AssessmentProtocols/Gazetted_General_Agriculture_Assessment_Protocols.pdf
2	Archaeological and Cultural Heritage Impact Assessment	https://screening.environment.gov.za/ScreeningDownloads/AssessmentProtocols/Gazetted_General_Requirement_Assessment_Protocols.pdf
3	Palaeontology Impact Assessment	https://screening.environment.gov.za/ScreeningDownloads/AssessmentProtocols/Gazetted_General_Requirement_Assessment_Protocols.pdf
4	Terrestrial Biodiversity Impact Assessment	https://screening.environment.gov.za/ScreeningDownloads/AssessmentProtocols/Gazetted_Terrestrial_Biodiversity_Assessment_Protocols.pdf
5	Aquatic Biodiversity Impact Assessment	https://screening.environment.gov.za/ScreeningDownloads/AssessmentProtocols/Gazetted_Aquatic_Biodiversity_Assessment_Protocols.pdf
6	Noise Impact Assessment	https://screening.environment.gov.za/ScreeningDownloads/AssessmentProtocols/Gazetted_Noise_Impacts_Assessment_Protocol.pdf
7	Radioactivity Impact Assessment	https://screening.environment.gov.za/ScreeningDownloads/AssessmentProtocols/Gazetted_General_Requirement_Assessment_Protocols.pdf
8	Plant Species Assessment	https://screening.environment.gov.za/ScreeningDownloads/AssessmentProtocols/Gazetted_Plant_Species_Assessment_Protocol.pdf

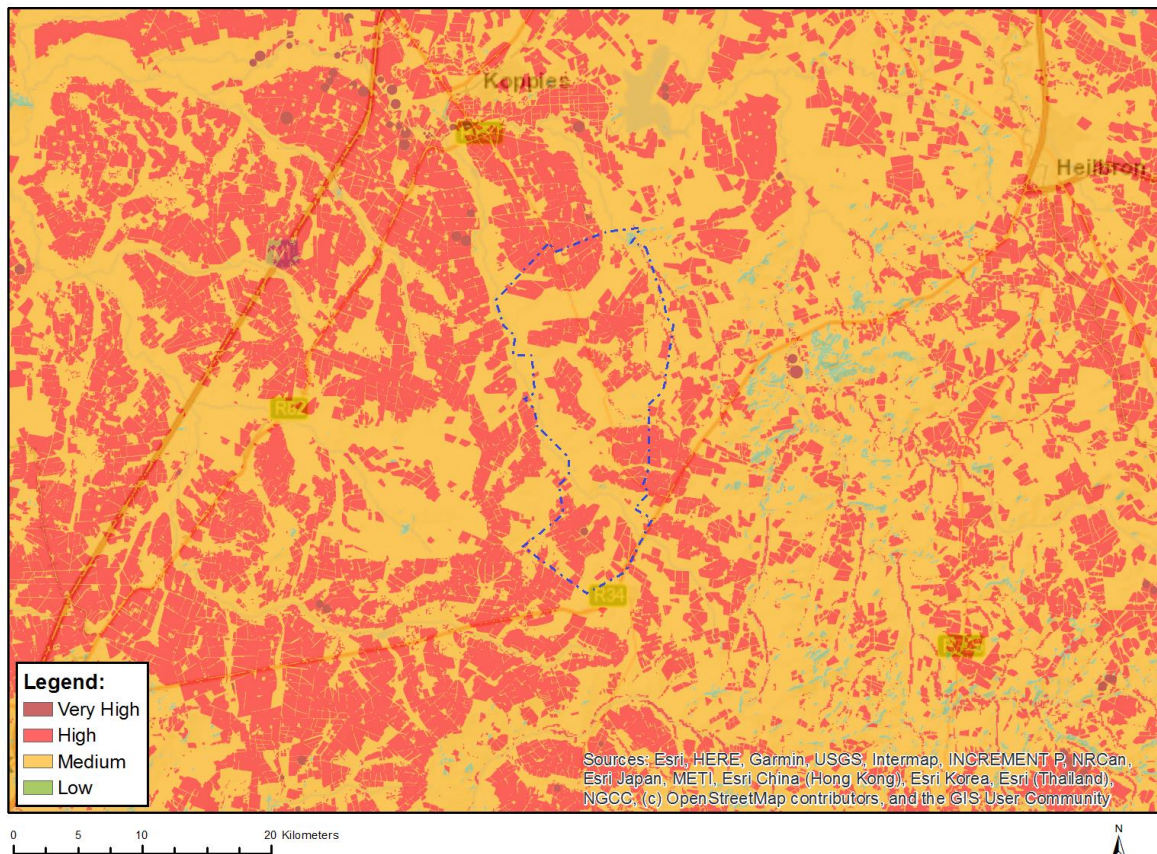
		ssmentProtocols/Gazetted Plant Species Assessment Protocols.pdf
9	Animal Species Assessment	https://screening.environment.gov.za/ScreeningDownloads/AssessmentProtocols/Gazetted Animal Species Assessment Protocols.pdf

OFFICIAL

Results of the environmental sensitivity of the proposed area.

The following section represents the results of the screening for environmental sensitivity of the proposed site for relevant environmental themes associated with the project classification. It is the duty of the EAP to ensure that the environmental themes provided by the screening tool are comprehensive and complete for the project. Refer to the disclaimer.

MAP OF RELATIVE AGRICULTURE THEME SENSITIVITY

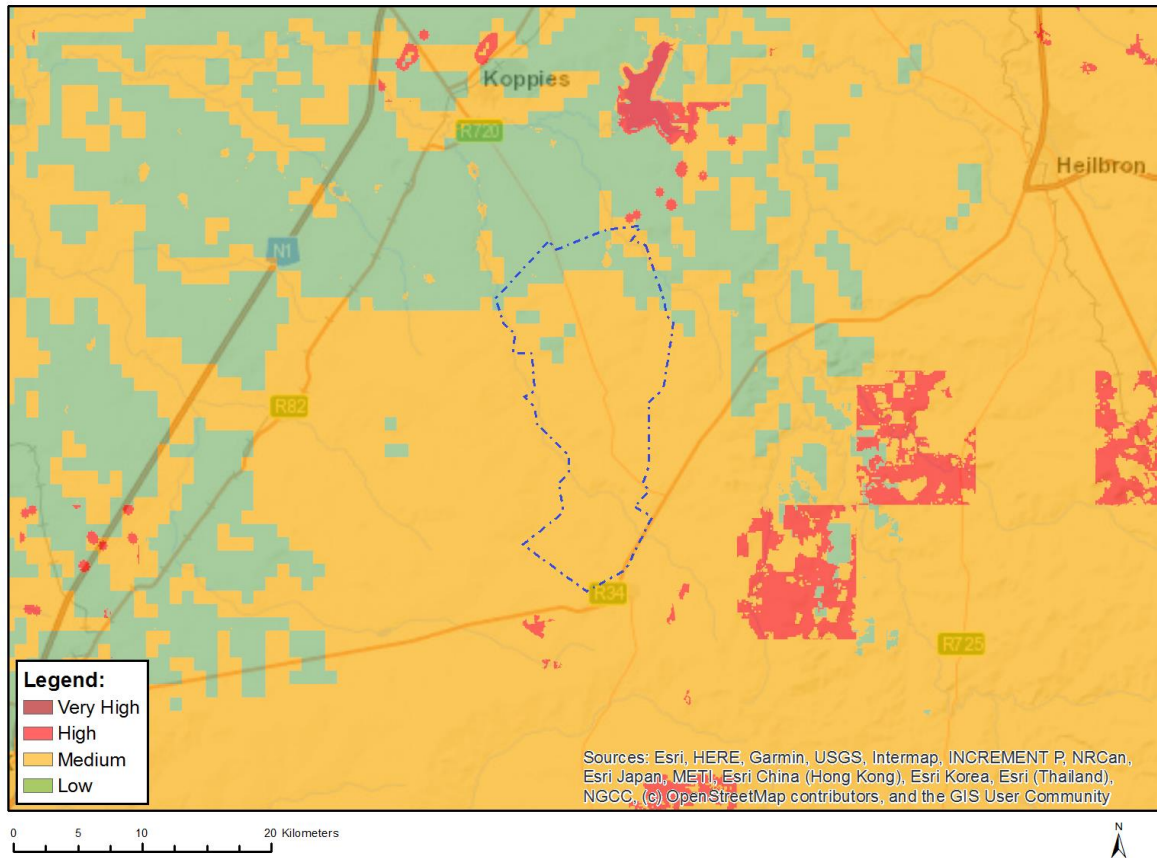


Very High sensitivity	High sensitivity	Medium sensitivity	Low sensitivity
X			

Sensitivity Features:

Sensitivity	Feature(s)
High	Land capability;09. Moderate-High/10. Moderate-High
High	Annual Crop Cultivation / Planted Pastures Rotation;Land capability;09. Moderate-High/10. Moderate-High
High	Annual Crop Cultivation / Planted Pastures Rotation;Land capability;06. Low-Moderate/07. Low-Moderate/08. Moderate
High	Old Fields;Land capability;06. Low-Moderate/07. Low-Moderate/08. Moderate
High	Old Fields;Land capability;09. Moderate-High/10. Moderate-High
Low	Land capability;01. Very low/02. Very low/03. Low-Very low/04. Low-Very low/05. Low
Medium	Land capability;06. Low-Moderate/07. Low-Moderate/08. Moderate
Very High	Pivot Irrigation;Land capability;06. Low-Moderate/07. Low-Moderate/08. Moderate

MAP OF RELATIVE ANIMAL SPECIES THEME SENSITIVITY



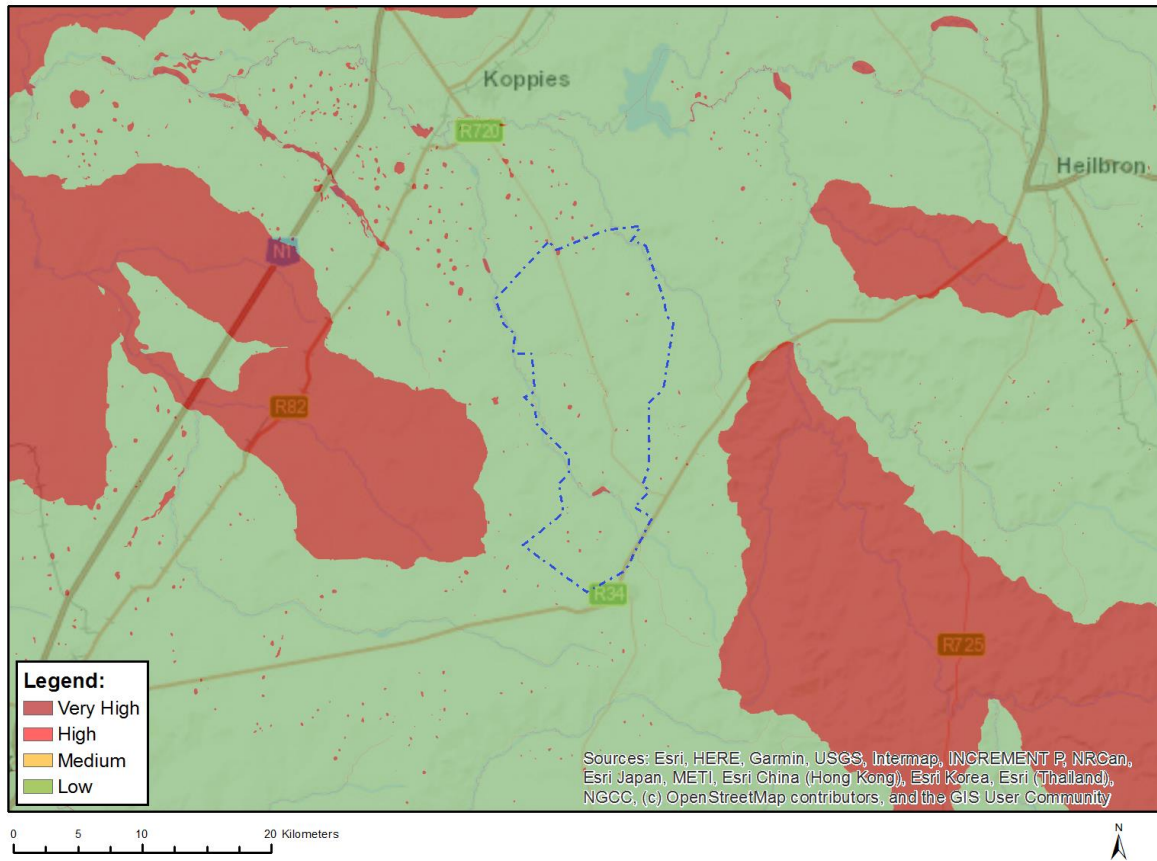
Where only a sensitive plant unique number or sensitive animal unique number is provided in the screening report and an assessment is required, the environmental assessment practitioner (EAP) or specialist is required to email SANBI at aiadatarequests@sanbi.org.za listing all sensitive species with their unique identifiers for which information is required. The name has been withheld as the species may be prone to illegal harvesting and must be protected. SANBI will release the actual species name after the details of the EAP or specialist have been documented.

Very High sensitivity	High sensitivity	Medium sensitivity	Low sensitivity
		X	

Sensitivity Features:

Sensitivity	Feature(s)
Low	Subject to confirmation
Medium	Aves-Hydroprogne caspia
Medium	Aves-Sagittarius serpentarius
Medium	Mammalia-Ourebia ourebi ourebi
Medium	Sensitive species 15

MAP OF RELATIVE AQUATIC BIODIVERSITY THEME SENSITIVITY

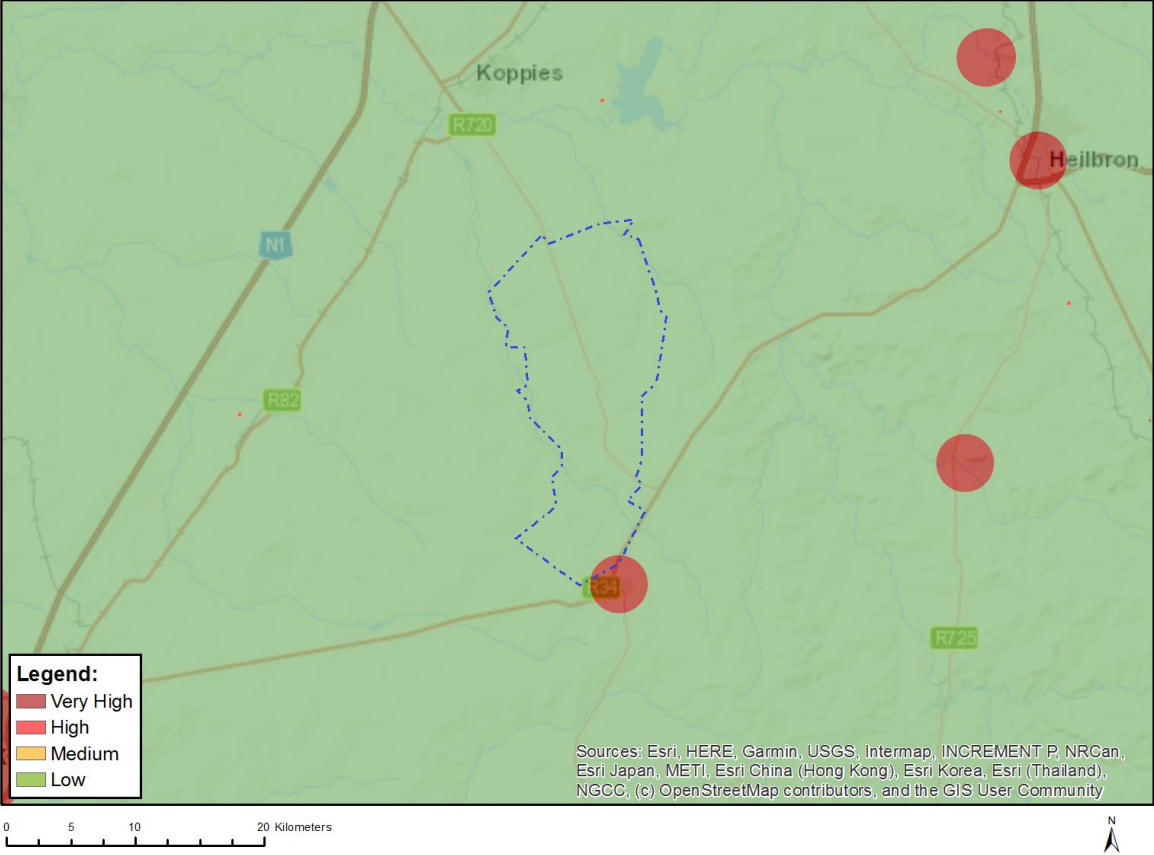


Very High sensitivity	High sensitivity	Medium sensitivity	Low sensitivity
X			

Sensitivity Features:

Sensitivity	Feature(s)
Low	Low sensitivity
Very High	Rivers_Z
Very High	Wetlands_(River)
Very High	Wetlands_Dry Highveld Grassland Bioregion (Depression)
Very High	Wetlands_Dry Highveld Grassland Bioregion (Floodplain)

MAP OF RELATIVE ARCHAEOLOGICAL AND CULTURAL HERITAGE THEME SENSITIVITY

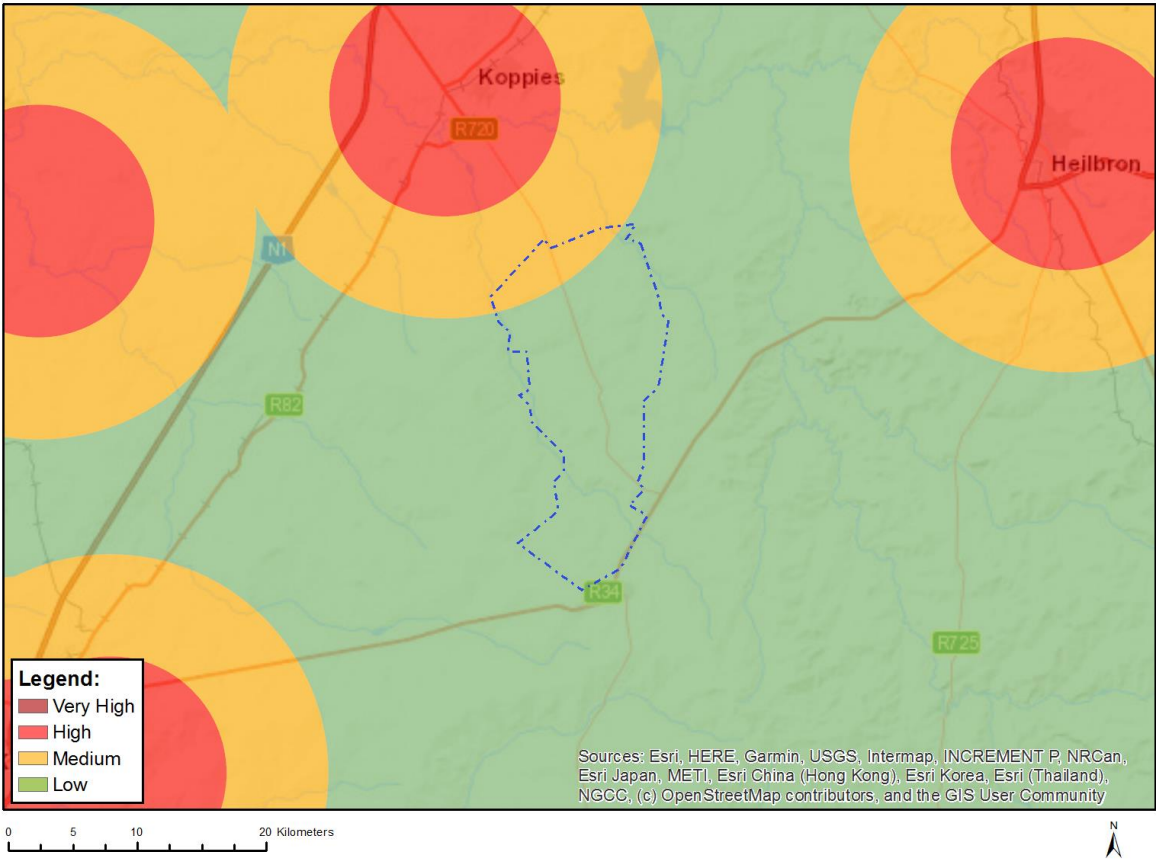


Very High sensitivity	High sensitivity	Medium sensitivity	Low sensitivity
X			

Sensitivity Features:

Sensitivity	Feature(s)
Low	Low sensitivity
Very High	Within 2km of a Grade II Heritage site

MAP OF RELATIVE CIVIL AVIATION THEME SENSITIVITY

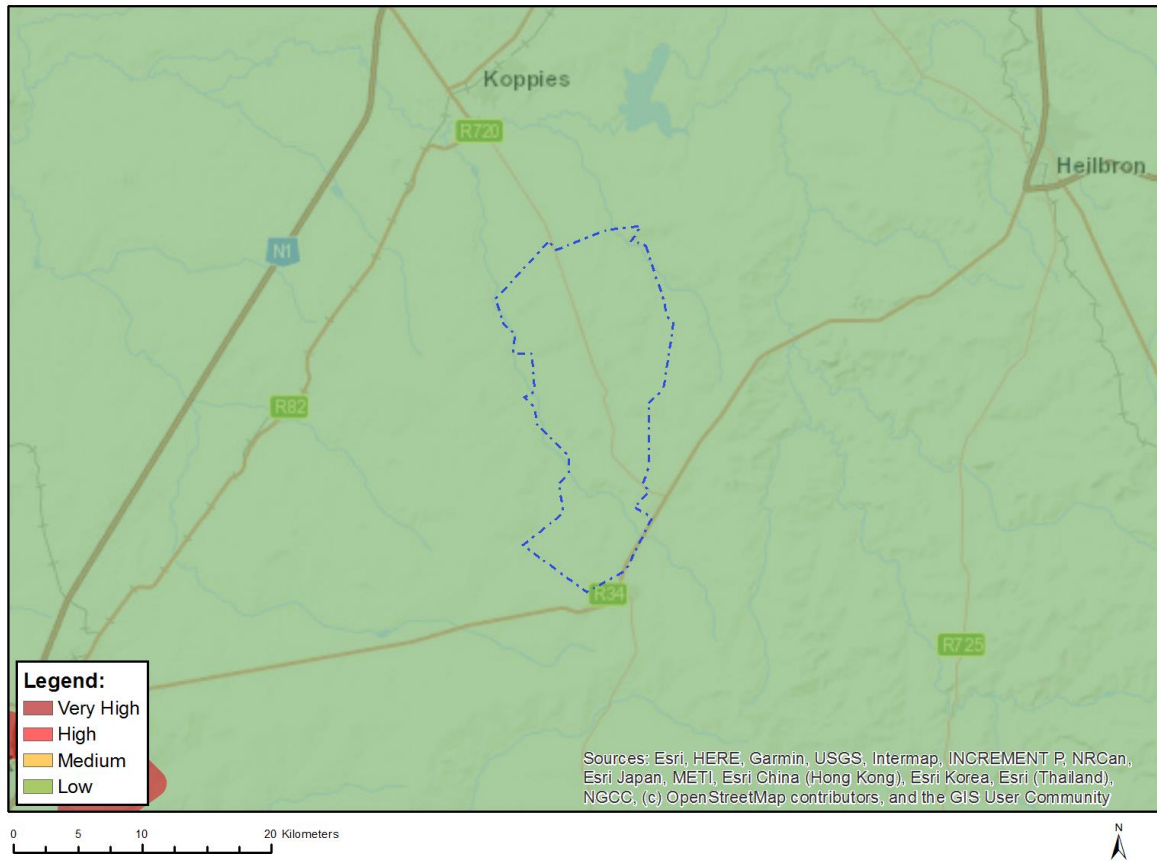


Very High sensitivity	High sensitivity	Medium sensitivity	Low sensitivity
		X	

Sensitivity Features:

Sensitivity	Feature(s)
Low	Low sensitivity
Medium	Between 8 and 15 km of other civil aviation aerodrome

MAP OF RELATIVE DEFENCE THEME SENSITIVITY

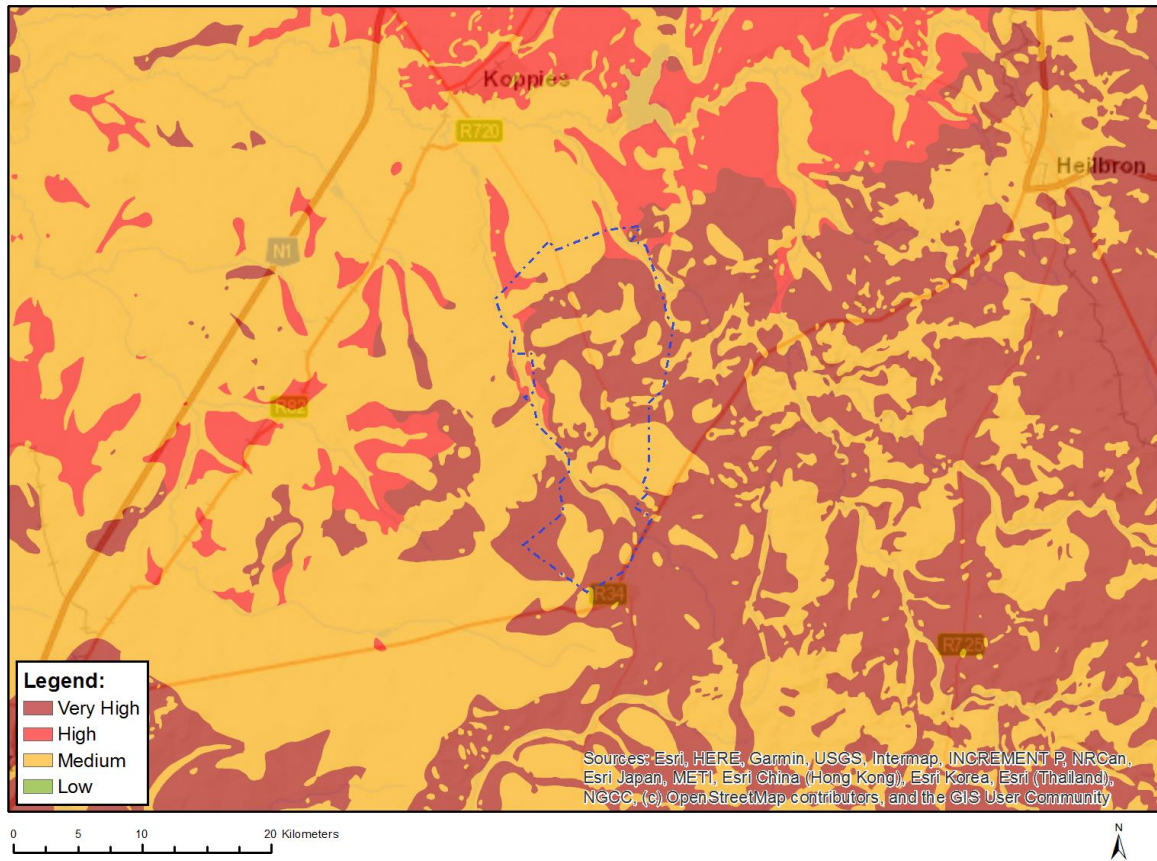


Very High sensitivity	High sensitivity	Medium sensitivity	Low sensitivity
			X

Sensitivity Features:

Sensitivity	Feature(s)
Low	Low Sensitivity

MAP OF RELATIVE PALEONTOLOGY THEME SENSITIVITY

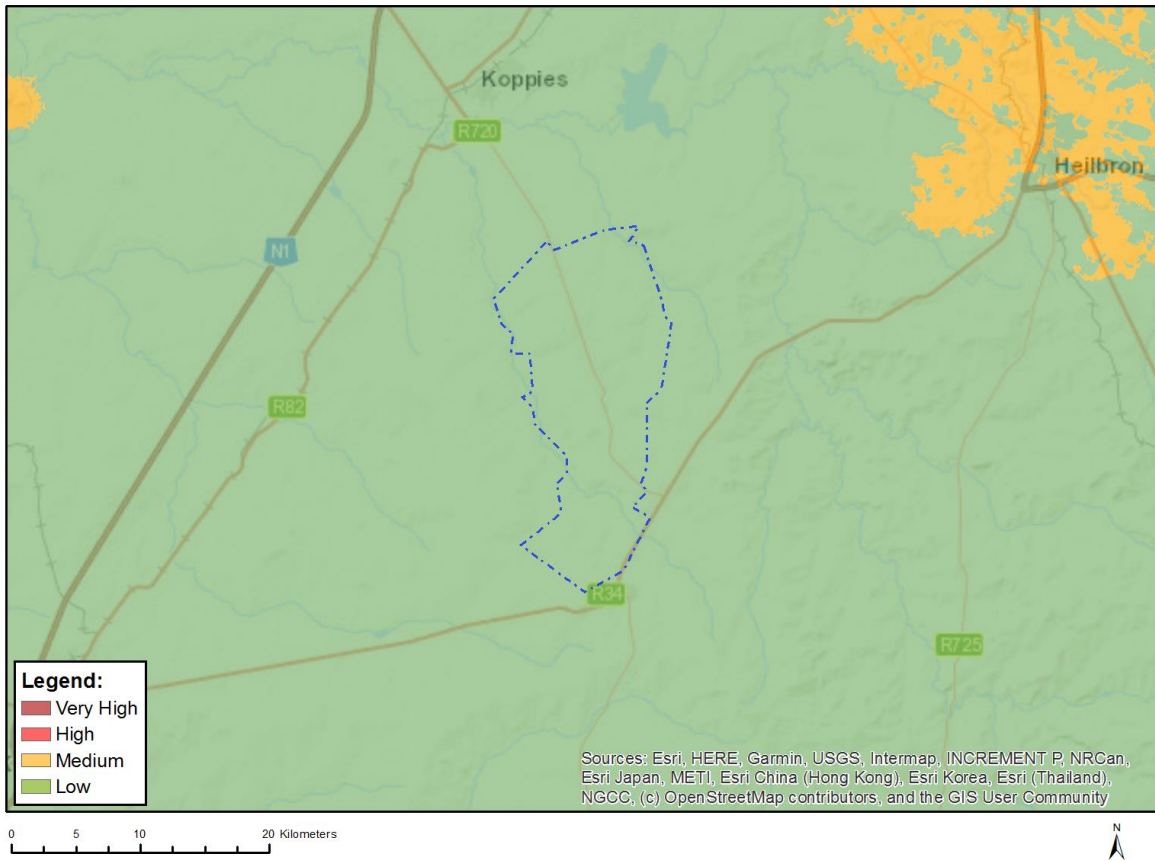


Very High sensitivity	High sensitivity	Medium sensitivity	Low sensitivity
X			

Sensitivity Features:

Sensitivity	Feature(s)
High	Features with a High paleontological sensitivity
Low	Features with a Low paleontological sensitivity
Medium	Features with a Medium paleontological sensitivity
Very High	Features with a Very High paleontological sensitivity

MAP OF RELATIVE PLANT SPECIES THEME SENSITIVITY



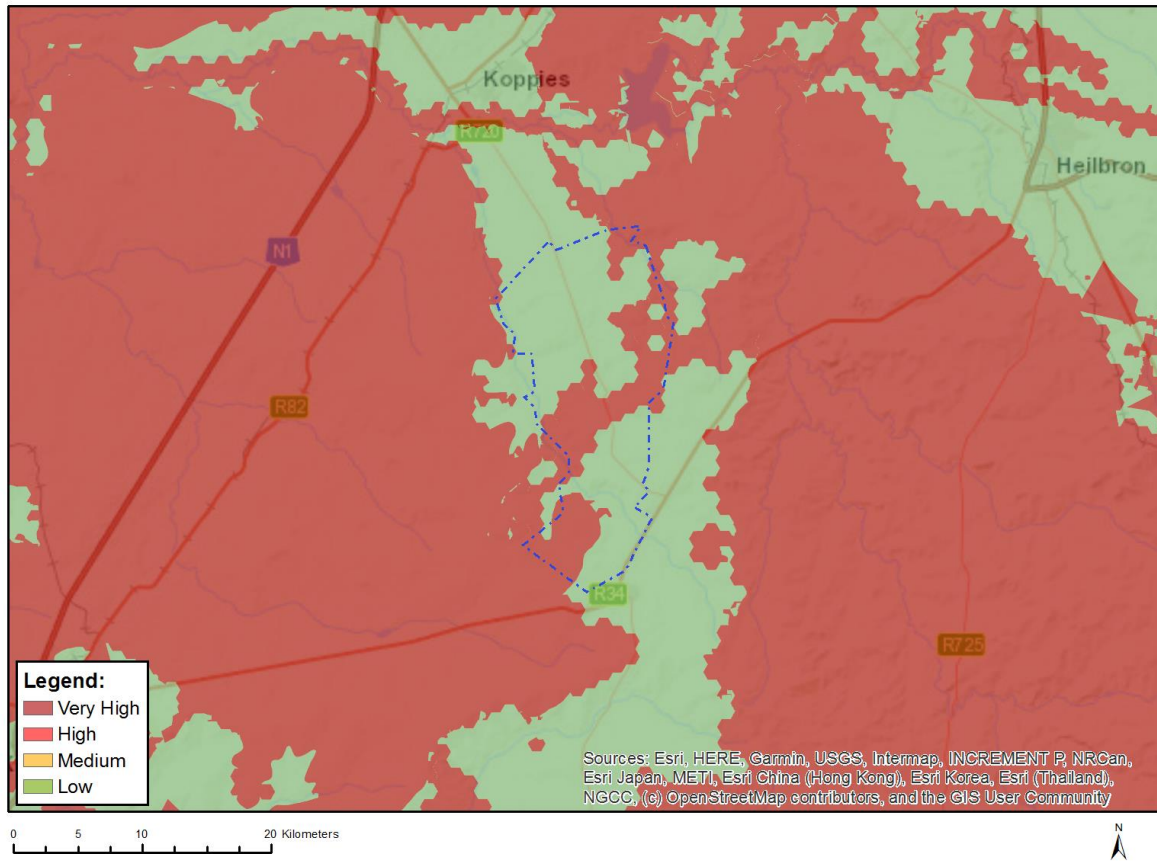
Where only a sensitive plant unique number or sensitive animal unique number is provided in the screening report and an assessment is required, the environmental assessment practitioner (EAP) or specialist is required to email SANBI at eiadatarequests@sanbi.org.za listing all sensitive species with their unique identifiers for which information is required. The name has been withheld as the species may be prone to illegal harvesting and must be protected. SANBI will release the actual species name after the details of the EAP or specialist have been documented.

Very High sensitivity	High sensitivity	Medium sensitivity	Low sensitivity
			X

Sensitivity Features:

Sensitivity	Feature(s)
Low	Low Sensitivity

MAP OF RELATIVE TERRESTRIAL BIODIVERSITY THEME SENSITIVITY



Very High sensitivity	High sensitivity	Medium sensitivity	Low sensitivity
X			

Sensitivity Features:

Sensitivity	Feature(s)
Low	Low Sensitivity
Very High	CBA 1
Very High	CBA 2
Very High	ESA 1
Very High	ESA 2
Very High	National Protected Area Expansion Strategy (NPAES)
Very High	EN_Vaal-Vet Sandy Grassland