



## TOKOMANE YA TLHAHISOLESERING

### White Rivers Exploration (Pty) Ltd

#### Ditshupiso Tsa DMRE:

Nomoro ya Tshupiso ya Kopo PR: FS 30/5/1/1/2/10696 PR

Normoro ya Kopo ya EA: FS 30/5/1/1/3/2/1/10696 EM

### Projeke ya New Kroonstad North

Dunrose Trading 186 (Pty) Ltd  
t/a Shango Solutions

HHK House  
Cnr. Ethel Ave and Ruth Cr.  
Northcliff  
Gauteng

P. O. Box 2591  
Cresta  
2118

Phone: +27 11 678 6504  
Fax: +27 11 678 9731

Email: [zizo@shango.co.za](mailto:zizo@shango.co.za)  
Website: [www.shango.co.za](http://www.shango.co.za)



**White Rivers**  
Exploration

**18 Phuptjane 2024**

## SEPHEO SA TOKOMANE ENA

- Tokomane ena ya Tlhahisoleseding ya Dikateng e fa wena jwalo ka Mothahaselli le Moamehi kakaretso ya projeke e sisintsweng.
- BID e mema wena jwalo ka Moamehi ya nang le Kgahleho le Kameho ho nka karolo ho Tshebetso ya Bonkakarolo ba Setjhaba e hlokehang.
- Tokomane ena e fa wena jwalo ka Mothahaselli le Moamehi monyetla wa ho nka karolo tlhophisong ya Tlaleho ya Motheo ya Tekolo le ho Lenaneo la Tsamaiso ya Tikoloho.
- Tokomane ena e boetse e fa wena Mothahaselli le Moamehi ho fa sehlopha sa projeke maikutlo a hao, dingongoreho le dintlha tseo o hananang le tsona mabapi le projeke e sisintsweng.

**TSE KA HARE**

1. Selelekela .....	1
2. Sepheo sa Tokomane ya Tlhahisoleseding (BID) .....	1
3. Sebaka sa Projeke .....	1
4. Tlhaloso ya Projeke .....	4
5. Jioloji le Sepheo sa Tlhahlobo .....	5
6. Ditlhoko Tsa Tsamaiso .....	6
7. Ditlamorao Tse Tlwaelehileng Tse Amanang le Mesebetsi Ena .....	7
8. Tshebetso ya Tekolo le Tlhahlobo ya Kameho ya Tikoloho .....	7
9. Ho Fumaneha ha Tlaleho ya Tlhahlobo Le Dintlha Tsa Letsatsi la ho ya Sebakeng .....	8
10. Nako eo Tumello ya Tikoloho e Hlokwang .....	8
11. Tlhoko le ho Lokela ha Projeke .....	8
12. Memo ya Setjhaba .....	9
13. Memo ya ho Ingodisa .....	9

**LETHATHAMO LA DITSHWANTSHO**

Setshwantsho sa 1: Mmapa wa sebaka .....	2
Setshwantsho sa 2: Mmapa wa jioloji le meedi ya mapolasi. ....	6

**LETHATHAMO LA DITHEIBOLE**

Theibole 1: Dintlha tsa Sebaka .....	3
--------------------------------------	---

## 1. SELELEKELA

White Rivers Exploration (Pty) Ltd (White Rivers Exploration) e rometse kopo ka inthanete ya Tumello ya ho Rafa le Tumello ya Tikoloho lefapheng la Mehloti ya Diminerale le Matla la Foreistata ka la 7 Tlhakubele 2024. Kopo ya inthaneteng e atlehile mme projeke e filwe nomoro ya reference e latelang FS 30/5/1/1/2/10696 PR. Kopo ya ho fumana Tumello e amohetswe ka la 25 Tlhakubele 2024. Haeba kopo e atleha, White Rivers Exploration e tla hlahloba hore na diminerale di a fumaneha sebakeng seo ho entsweng kopo ho sona. Ho tla batlwa diminerale tse latelang:

- Gauta
- Silevera
- Mashala
- Cobalt
- Koporo
- Taemane (Alluvial)
- Tshepe
- Manganese
- Molybdenum
- Nikele
- Loto
- Sehlopha sa dimethale tsa Polatinamo
- Rare Earths/Matlotlo
- Salfire
- Yuraniamo
- Tungsten
- Zinki

Projeke e sisintsweng e tla tsejwa e le New Kroonstad North mme sepheo sa yona ke ho hlahloba le ho lekanya palo e tla ba teng ya diminerale. E le ho etsa mosebetsi wa dipatlisiso, White Rivers Exploration e hloka Tumello ho ya ka Molao wa Ntshetsopele ya Diminerale le Petroliamo wa 2002 (MPRDA, Molao wa 28 wa 2002, o ntlafaditsweng). White Rivers Exploration e boetse e lokela ho fumana Tumello ya Tikoloho (EA) tumellanong le Molao wa Taolo ya Tikoloho wa Naha wa 1998 (NEMA, Molao wa. 107 wa 1998, o ntlafaditsweng) o kenyeletsang hore ho romelwe Raporoto ya Tekolo ya Motheo (BAR), le Raporoto ya Lenaneo la Taolo ya Tikoloho (EMPR) hammoho le ho etsa Tshebetso ya ho ba le Seabo ha Setjhaba (PPP). Shango Solutions (Pty) Ltd (Shango Solutions) e kgethilwe ke White Rivers Exploration e le Setsebi sa Tekolo ya Tikoloho (EAP) molemong wa ho thusa ho finyella ditlhoko tseo.

## 2. SEPHEO SA TOKOMANE ENA

Ho ba le Seabo ha Setjhaba ho theha karolo ya bohlokwa tshebetsong ena. Tokomane ya Tlhahisoleseding (BID) e fa mmadi monyetla wa ho fumana tlhahisoleseding, ho ntsha maikutlo, ho hlahisa dintlha tse ngongorehisang le tshebedisanommoho tshebetsong ya ntshetsopele. Kabo ya tokomane ena ke mohato wa bohlokwa ho tsebisa mmadi hore na a ka kenella jwang tshebetsong.

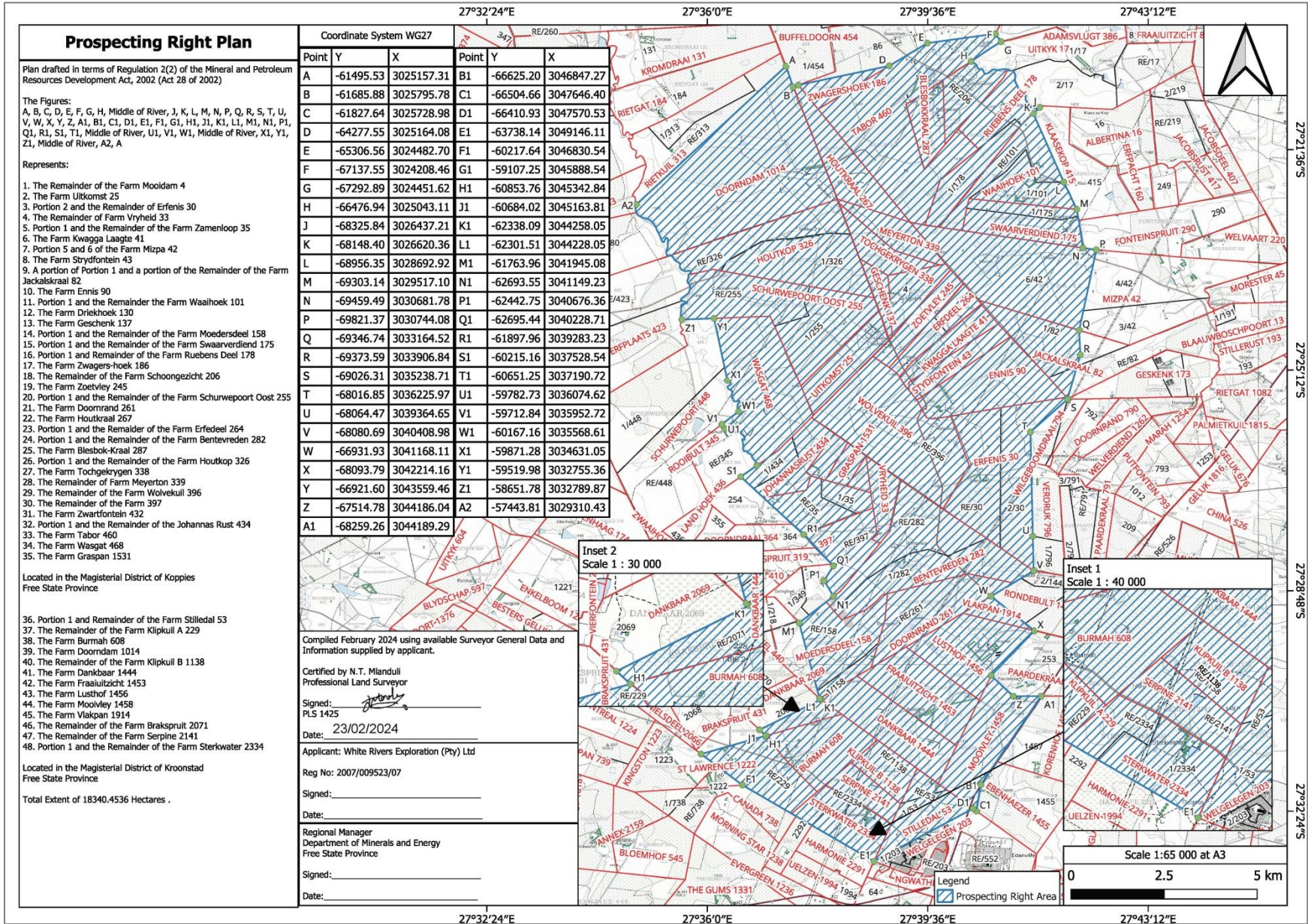
Morero wa tokomane ena ke ho fa mmadi tlhahisoleseding mabapi le projeke ho akareletsang le:

- Selelekela sa projeke ho akaretsa le dintlha tsa sebaka.
- Sesupo sa mesebetsi e lohothilweng le mekgwatshebetso ya molao eo projeke e etswang ka yona.
- Ditlamorao tsa tikoloho tse ka bang teng.
- Tlhaloso ya Tshebetso ya ho ba le Seabo ha Setjhaba (PPP) e lokelang ho latelwa.
- Tlhaloso ya kamoo motho a ka bang le seabo jwalo ka Mothahaselli le Moamehi (I&AP)

## 3. SEBAKA SA PROJEKE

Sebaka se boholo ba dihekthara tse 18 340.4536 (ha) (Setshwantsho sa 1) mme se Seterekeng sa Magistrata sa Kroonstad le Koppies, bonyane dikhilomithara tse ka bang 25 (km) ka leboya ho toropo ya Kroonstad, Profinseng ya Foreistata e Afrika Borwa. Theibole ya 1 e bontsha dintlha tsa sebaka seo ho entsweng kopo.





Setshwantsho sa 1: Mmapa wa sebaka (Molao 2(2) Polane).



## Theibole ya 1: Dintlha tsa Sebaka.

	Lebitso la Polasi	Karolo ya Polasi	Khoutu ya Mohlahlobi
1	Bentevreden 282	Karolo e setseng	F0190000000028200000
2	Bentevreden 282	1	F0190000000028200001
3	Blesbok-Kraal 287	Polasi	F0190000000028700000
4	Brakspruit 2071	Karolo e setseng	F02000000000207100000
5	Burmah 608	Polasi	F0200000000060800000
6	Dankbaar 1444	Polasi	F02000000000144400000
7	Doornadam 1014 (314)	Polasi	F0190000000031400000
8	Doornrand 261	Polasi	F0190000000026100000
9	Driekhoek 130	Polasi	F0190000000013000000
10	Ennis 90	Polasi	F0190000000009000000
11	Erfedeel 264	Karolo e setseng	F0190000000026400000
12	Erfedeel 264	1	F0190000000026400001
13	Erfenis 30	Karolo e setseng	F0190000000003000000
14	Erfenis 30	2	F0190000000003000002
15	Farm 397	Karolo e setseng	F0190000000039700000
16	Fraaiuitzicht 1453	Polasi	F02000000000145300000
17	Geschenk 137	Polasi	F0190000000013700000
18	Graspan 1531 (331)	Polasi	F0190000000033100000
19	Houtkop 326	Karolo e setseng	F0190000000032600000
20	Houtkop 326	1	F0190000000032600001
21	Houtkraal 267	Polasi	F0190000000026700000
22	Jackalskraal 82	Karolo e Setseng ya Polasi	F0190000000008200000
23	Jackalskraal 82	Karolo ya Karolo 1	F0190000000008200001
24	Johannas Rust 434	Karolo e setseng	F0190000000043400000
25	Johannas Rust 434	1	F0190000000043400001
26	Klipkuil A 229	Karolo e setseng	F0200000000022900000
27	Klipkuil B 1138	Karolo e setseng	F02000000000113800000
28	Kwagga Laagte 41	Polasi	F0190000000004100000
29	Lusthof 1456	Polasi	F02000000000145600000
30	Meyerton 339	Karolo e setseng	F0190000000033900000
31	Mizpa 42	5	F0190000000004200005
32	Mizpa 42	6	F0190000000004200006
33	Moedersdeel 158	Karolo e setseng	F0190000000015800000
34	Moedersdeel 158	1	F0190000000015800001
35	Mooidam 4	Karolo e setseng	F0190000000005300000
36	Moovley 1458	Polasi	F02000000000145800000
37	Ruebens Deel 178	Karolo e setseng	F0190000000017800000
38	Ruebens Deel 178	1	F0190000000017800001
39	Schoongezicht 206	Karolo e setseng	F0190000000020600000
40	Schurwepoort Oost 255	Karolo e setseng	F0190000000025500000
41	Schurwepoort Oost 255	1	F0190000000025500001
42	Serpine 2141	Karolo e setseng	F02000000000214100000
43	Sterkwater 2334	Karolo e setseng	F02000000000233400000
44	Sterkwater 2334	1	F02000000000233400001
45	Stilledal 53	Karolo e setseng	F0200000000005300000
46	Stilledal 53	1	F0200000000005300001
47	Strydfontein 43	Polasi	F0190000000001100000
48	Swaarverdiend 175	Karolo e setseng	F0190000000017500000
49	Swaarverdiend 175	1	F0190000000017500001
50	Tabor 460	Polasi	F0190000000004600000
51	Tochgekrygen 338	Polasi	F01900000000033800000
52	Uitkomst 25	Polasi	F0190000000002500000
53	Vlakpan 1914	Polasi	F02000000000191400000
54	Vryheid 33	Karolo e setseng	F0190000000003300000
55	Waaihoek 101	Karolo e setseng	F0190000000010100000
56	Waaihoek 101	1	F0190000000010100000
57	Wasgat 468	Polasi	F0190000000046800000

Lebitso la Polisi		Karolo ya Polisi	Khoutu ya Mohlahlobi
58	Wolvekuil 396	Karolo e setseng	F01900000000039600000
59	Zamenloop 35	Karolo e setseng	F0190000000003500000
60	Zamenloop 35	1	F0190000000003500001
61	Zoetvley 245	Polasi	F01900000000024500000
62	Zwagers-hoek 186	Polasi	F01900000000018600000
63	Zwartfontein 432	Polasi	F01900000000043200000

#### 4. TLHALOSO YA PROJEKE

Dipatlisiso tse latelang di kentswe e le karolo ya PWP dilemong tsa 1 ho ya ho tsa 5 tsa projeke:

##### 1. Ho Bokellwa ha Datha:

###### Dithuto tsa Desktop

[Selemo sa Pele; Nako: Dikgwedi tse 12]

###### Ho Bokella Datha

[Selemo sa Pele; Nako: Dikgwedi tse 12]

Datha e hlalosa moo majwe a fumanehang teng esita le moruo wa ona e tla bolokwa e le hore e ka sebediswa. Datha ena e tla fumaneha ka mefuta e sa tshwaneng e kang mokoti wa nako e fetileng wa boro, dimmapa tsa lefatshe, dimmapa tsa jeolojikhale, diphuputso tsa jeofisikhale (tse akaretsang tse phatlaladitsweng tsa *gravimetric*, *radiometric*, *magnetic*, *seismic*, *remote sensing*, le dintlha le ha e le dife tse amanang le ho batlwa ha dirafshwa tsa nakong e fetileng). Datha ena e tla hlalohwa ka hloko ebe e netefatswe ho sebediswa mokgwa wa QA/QC).

###### Dathabeise, Dimmapa le Theho ya Mmotlolo wa Sejioloji:

[Selemo sa Pele; Nako: Dikgwedi tse 6]

Datha e bokeletsweng e tla kenngwa dathabeising e le nngwe ka morero wa ho hlalosa dintlha tse hlokwang ho sebediswa mmapa wa GIS o tla hlaha ka mokgwa wa elektronike. Disete tse fapaneng tsa datha di tla manehwa mmampeng wa projeke le dibakeng tse e potileng e le ho hlalosa mmotlolo wa sejioloji. Mmotlolo ona o tla sebediswa ho ntlafatsa lenaneo la tshibollo bakeng sa sebaka se shebilweng.

###### Ketelo ya Sebaka:

[Selemo sa Pele; Nako: Beke e le nngwe]

Mokopi o tla etela sebakeng seo ho itlwaetsa dintlha tse ding (tse kang merafo ya kgale, dibopeho tsa motheo, makatso, metsi le mekgwabo) tse sebakeng sa projeke mme a kopane le beng ba dibaka. Leeto lena le tla netefatsa meedi le mesebetsi e etswang mapolasing. Ho tla etswa boiteko ba ho hlwaya dintho tse ka amang lenaneo la ho batlisisa.

##### 2. Phuputso ya Jeofisikhale

Diphuputso tsa sebaka tse entsweng nako e fetileng ke dikhamphani tsa merafo di a fumaneha mme ho ke ke ha hlokeha hore ho etswe diphuputso tse ding. Patlisiso ya tshithinyeho ya mobu e entswe dikhilomithara tse ka bang 60 Anglo Gold Ashanti mme dipuisano tsa pele di bontsha hore ho ka kgonahala hore ho rekwe sebaka seo. Dipatlisiso tsa *aeromagnetic* di a fumaneha mme di tla fumana le ho hlalosa hammoho le mekoti e tshelweng le datha e nngwe. Haeba sephetho sa mesebetsi o entsweng selemong sa pele se le setle, ho tla etswa qeto ya ho reka diphuputso tseo.

Haeba ho bonahala mesebetsi ya tlhahlobo e atleha, ditlhahlobo tse ding tse eketsehileng tsa (magnetic) di tla etswa.

###### Phuputso ya Jeofisikhale le ya *Seismic*:

[Selemo sa 2; Nako: Dikgwedi tse 12]

###### Pokello ya Datha le Tlhaloso ya Yona:

[Selemo sa 2; Nako: Dikgwedi tse 12]

###### Tlhakiso ya Mmotlolo wa Jeolojikhale:

[Selemo sa 2; Nako: Dikgwedi tse 12]

Haeba diphuputso tsa *seismic* di rekwa, di tla kopangwa le pokello ya datha ya jeoloji mme di hlalose ka mekgwa ya dimmapa le tsa marangrang tsa GIS. Tlhalosoleseding ena e tla kenyeletswa mmotlolong wa jeoloji e le ho hlalosa mehlodi ya boitsebiso.

**3. Ho Hlahloba Mekoti hape, ho Loga le ho Sampola hape: [Selemo sa Bobedi; Nako: Dikgwedi tse 6]**

Ho latela mmotlolo wa ho qala wa sejioloji, mekoti ya mantlha e ileng ya tshiekwa e tla hlahlojwa hape mme ho be le dipuisano le beng ba sebaka e le ho fumanana tumello ya tshebetso. Hang ha ho fihletswe botebong ba didiba, bokahare boo bo tla rekotwa mme haeba ho hloka hla bo tla nka disampole hape. Tshebetso ena e tla dumella netefatso ya di logo tsa mekoti mme e tla eketsa tshepo ho datha e tsheheditse mmotlolo wa sejioloji.

**4. Ho Tjheka**

Ho phunya taemane ho tla ba ka mokgwa wa ho tjheka ditaemane mme ho tla etsahala ka dilemo tsa 3 le 4. Dintlha tsena di tla kopanngwa le mmotlolo wa sejioloji ho tswela pele ho hlalosa di *orebodies*, tseo ha di kopantswe le tlhahisoleseding ya tlhahlobo di tla sebediswa ho hlalosa mohlopi.

**4.1 Ho tshiekwa ha mekoti e 3 ya botebo ba dimithara tse 700 mokoti ka mong: [Selemo sa Boraro; Nako: Dikgwedi tse 12]**

Ho ipapisitswe le mmotlolo wa pele wa jeoloji o thehilweng, ho tla etswa lenaneo la ho tjheka mekoti e mene.

**4.2 Tlhahlobo ya Mmotlolo wa Jeoloji: [Selemo sa Boraro; Nako: Dikgwedi tse 6]**

Datha e fumanweng ha ho logwa le ho sampola dikoti tsa kgale e tla kopanngwa mmotlong wa sejioloji ho netefatsa sebopelo sa jeoloji le moo ho lokelang ho tshiekwa teng.

**5.1 Ho Tshiekwa ha Mekoti e 3 ya Botebo ba dimithara tse 700 mokoti ka mong: [Selemo sa Bone; Nako: Dikgwedi tse 12]**

Haeba mosebetsi wa ho tjheka o tla etswa selemong sa 3 o atleha, ho tla tshiekwa mekoti e meng e meraro. Mosebetsi wa ho tjheka o tla etswa ka selemo sa 4 o tla itshitleha ka maphumela a mosebetsi o entsweng selemong sa 3. Ho tjheka ho tla etswa ka mokgwa o nepahetseng le o nang le boikarabelo tikolohong ho kenyeletswa ho ntjhafatswa ha dibaka tsa ho tjheka hore di be boemong ba tsona ba pele. Lesela la polasitiki le tla behwa ka tlasa metjhini ho thibela ho qhalana ha oli. Ha ho na maro a mang a tla sebediswa ha ho tshiekwa taemane ntle le metsi kaha ona a tla sebediswa ho fokotsa lerole. Mehato ya tsosoloso ya tikoloho e tla kenyeletswa konterakeng le khampani e tshiekang mme ditshenyehelo tsa tsosoloso ya tikoloho di tla kenyeletswa ditshenyehelong tsa ho tjheka.

**5.2 Phethelo ya Mmotlolo wa Jeolojikhale wa 3D: [Selemo sa bohloko; Nako: Dikgwedi tse 4]**

Ho latela ho logwa hape le ho sampolwa hape ha botebo ba nalane, mmotlolo wa sejioloji wa 3D o tla kengwa lesedi le letjha mme o phethelwe bakeng sa tshebediso nakong ya kakanyo ya disebediswa.

**5.3 Khoutu e Dumellanang le Kakanyo ya Disebediswa: [Selemo sa bohloko; Nako: Dikgwedi tse 4]**

Ka tshebediso ya mmotlolo o phethetsweng wa sejioloji hammoho le diphepo tse fumanweng ha ho tshiekwa, ho tla etswa khoutu e dumellanang le kakanyo ya disebediswa.

**5.4 Tekolo ya Projeke [Selemo sa bohloko; Nako: Dikgwedi tse 4]**

Haeba mosebetsi ya tlhahlobo e bonahala e atleha, ho tla etswa tekolo ya projeke. Nakong ya tekolo ena, disebediswa di tla bolokwa mme ho tla etswa moralo le kemiso. Sena se tla bontsha hore na sebaka se kgethilweng se loketse bakeng sa ho rafa kapa tjhe.

**5. JIOLOJI SE SEPHEO SA TLHAHLOBO**

Sebaka se kopilweng ho hlahlojwa se kgethilwe ho itshitlehilwe haholo ka datha ya nakong e fetileng e fumanehang moo, e bontshang moo dihlaliswa di ka fumanwang teng. Ka selemo sa 1930, ho ile ha epollwa dintho tse ka tlasa lefatshe e le hore ho fumanwe hore na ke ditsha dife moo gauta e ka fumanehang teng profinseng ya Foreistata. Dr. R Krahnmann o ile a fumana moedi wa Witwatersrand Basin a sebedisa thepa ya ho metha matla a magnetese bakeng sa West Rand Group. Yaba ho a tshiekwa ka sepheo sa ho fumana taemane, athe ho tla fumanwa diminerale tse nang le

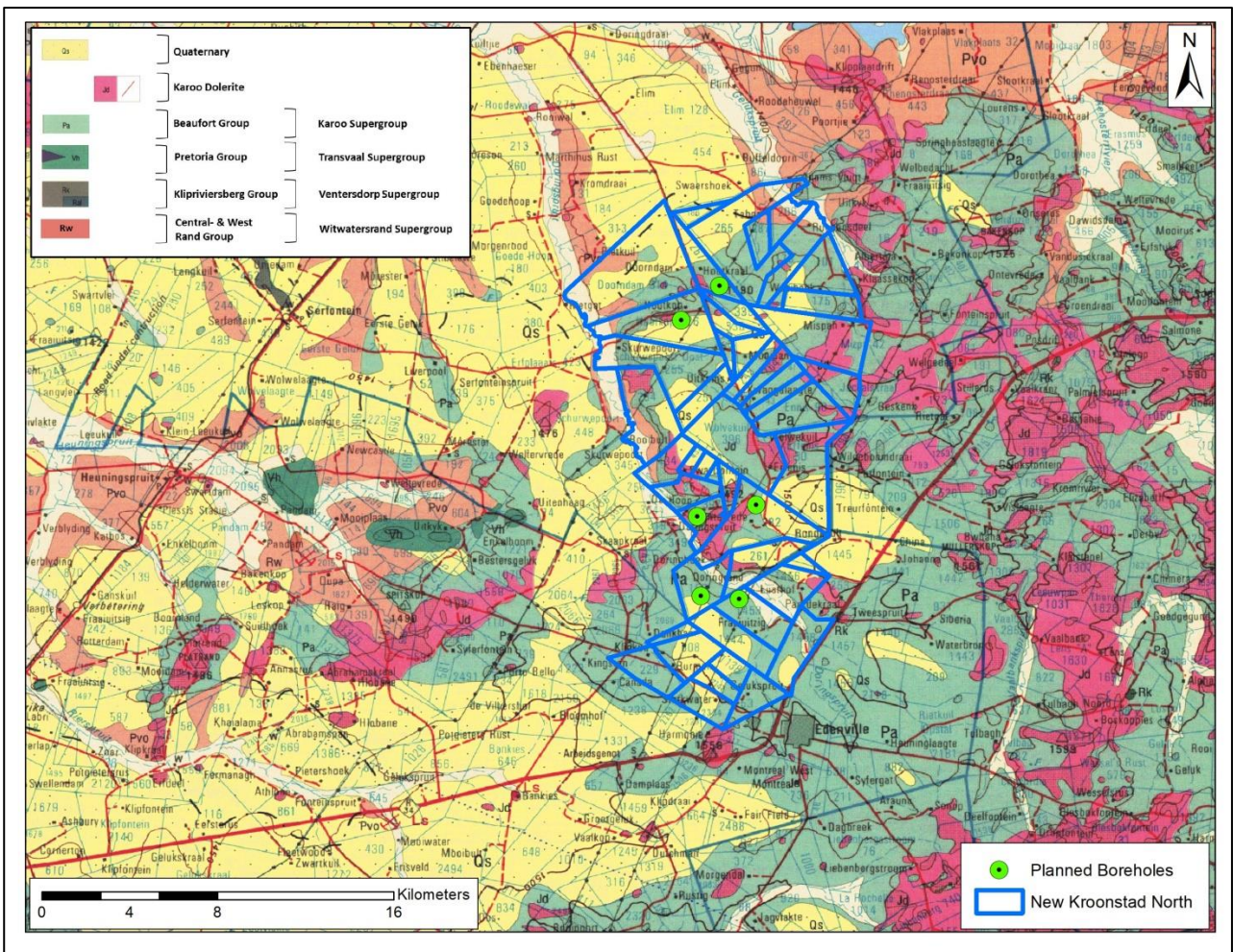


gauta karolong ya Central Rand Group (Setshwantsho sa 2). Ke moo ho ileng ha fumanwa tse ding tsa ditsha tse kgolo tse nang le gauta.

Welkom ke toropo e kgolo ka ho fetisisa profinseng ya Foreistata Goldfield, e dikhilomithara tse ka bang 270 borwa bophirimela ho Johannesburg, mme e dimithara tse 1 370 bophahamong ba lewatele. Welkom Goldfield e na le merafo e leshomo le motso o mong mme e akaretisa toropo ya Allanridge, Welkom le Virginia. Ka kakaretso merafo ena e hlalositse gauta ya boima ba dikhilograma tse dimilione tse 9.6.

Dibaka tse tla batlwa ka ho kgetheha ke tse nang le metswako ya gauta karolong ya Central Rand Group ya Witwatersrand Supergroup le ya Ventersdorp Contact Reef e welang ho Ventersdorp Supergroup.

Witwatersrand Supergroup e na le gauta e kopanetsweng le Karoo Supergroup ka dimithara tse 500, mme boholo ba majwe a moo ke a motopo le a boreledi a Ecca Group. Ecca Group e na le mashala a sa tebang hakaalo, kahoo ho bonolo ho a fumana. Ho lebeletswe hore ho fumanwe, silevera, yuraniamo, salfire, ditaemane, *rare earths* le sehlopha sa dimethale tsa polatinamo, mme di rafshwe jwalo ka ho etswa ka gauta. Dimethale tsa motheo (cobalt, koporo, manganese, molybdenum, nikele, loto, tungsten le zinki) di ka ba teng majweng a hataneng.



Setshwantsho sa 1: Mmapa wa jiloloji o bontshang meedi ya polasi.

## 6. DITLHOKO TSA TSAMAISO

Morero o sisintsweng o tla kenyeletsa ditshebetso tse latelang tsa kopo le mesebetsi e amanang le yona:

- Pokello ya BAR le EMPR.
- Pokello ya Raporoto ya Sephetho.
- Ho kenyeletswa ha Setjhaba PPP.



Ho lebeletswe hore mesebetsi e latelang ya NEMA EIA e kenyeletswe kopong ena:

- **Listing Notice 1 – Mosebetsi wa 20 wa GNR 327 (jwalo ka ha e ntjhafaditswe ka la 11 Phuptjane 2021):** Mosebetsi ofe kapa ofe ho kenyeleditswe le ho etswa ha mosebetsi o hlokang tokelo ya ho batla diminerale ho latela Karolo ya 16 ya Molao wa Ntshetsopele ya Diminerale le Petroliamo wa 2002 (Molao wa 28 wa 2002), ho akareletsa le tshebetso le ha e le efe e amehang jwalo ka ha ho hlalositswe ho Listing kapa ho Listing 3 ya 2014, e hlokalang bakeng sa tokelo ya ho batlisisa.
- **Listing Notice 3 – Mosebetsi wa 12(b)(i) le (ii) wa GNR 324 (wa 2017):** Ho hlekwa ha sebaka sa diskweremithara tse 300 kapa ho feta tsa dimela tsa matswallwa ntle le moo ho hlokalang ho hlekwa ha dimela tsa matswallwa bakeng sa sepheo sa ho lokisa ho entsweng ho latela moralo wa taolo ya ho lokisa (i) dibaka tse thathamisitsweng ho ya ka Karolo ya 52 ya NEMA kapa pele ho hatiswa lethathamo leo, ke seabakeng se thibetsweng ho ya ka Tekolo ya Naha ya Mefuta futa ya Dihlodilweng ya 2004 le (ii) seabakeng se hlwauweng e le sa tlhaho ho ya ka di polane.

## 7. DITLAMORAO TSE TLWAELEHILENG TSE AMANANG LE MESEBETSI ENA

Ditlamorao tse latelang di tla hlahlojwa le ho kenyeletswa tokomaneng ya BAR:

- Dikotso tsa polokeho le tshireletseho ho beng le badudi ba molao.
- Tshitiso ya tshebediso ya mobu.
- Dibaka tsa botjhaba/setso.
- Tahleho/tshenyo ya diphofolo le dimela.
- Tshenyo ya marangrang a seng a le teng.
- Menahano e se nang bonnete le ditebello.
- Ho tloswa ha dijalo.
- Ho hlokisa mobu botsitso /ho ribitla mobu/tshilafalo ya mobu.
- Kgoholeho.
- Tshenyo ya dibopeho tsa bojalefa.
- Lerata.
- Kenyeletso ya mefuta ya melata.
- Ho kubeletsa (lerole).
- Ho dutla ha khabone /tshilafatso.
- Tshilafalo ya metsi.
- Ho baka le ho lahla ditshila.

## 8. TSHEBETSO YA TEKOLO YA MOTHEO

Mehato ya sehlooho e kenyeletsang tshebetso e tlwaelehileng ya Tekolo ya Motheo e hlalositswe ka tlase.

### Thakgolo le Kopo

- Tlatsa le ho romela diforomo tsa kopo.

### Tshebetso ya ho ba le Seabo ha Setjhaba

- Ho hlwauwa ha I&APs.
- Tokiso ya ditokomane tsa tsebiso (BID, lengolo, papatso, tsebiso ya sebaka, foromo ya ngodiso).
- Tsebiso ya I&APs le bathahaselli ba loketseng ba projeke.
- Ho beha ditsebiso le dipapatso.

**BAR le EMPR**

- Pokeletso ya ntlha e qalang ya datha le tlhwaio ya ditlamorao tse ka bang teng tse amanang le projeke.
- Tekolo ya dintlha tse ding tsa projeke.
- Boithuto bo kgethehileng bo entsweng (ha ho hlokeha).
- Ditlamorao tse ka bang teng di a lekangwa le mehato e lohothilweng ya ho di fokotsa.
- Ho beha mananeo a lohothilweng leihlo o netefatsa hore mehato ya phokotso e a kgoneha.
- BAR le EMPR ya mantlha e fuwa setjhaba le balaodi ba Mmuso bakeng sa tlhahlobo le maikutlo.
- BAR le EMPR e ya ntlafatswa ho kenyeletsa maikutlo ohle pele e romelwa ho DMRE.
- DMRE e amohela BAR le EMPR kapa e kopa tlhahisoleseding e eketsehileng.

**Rekoto ya Qeto**

- DMRE e etsa qeto ya ho amohela kapa ho hana kopo bakeng sa Tumello ya Tikoloho.
- I&APs bohle ba tsebiswa sephetho sa kopo le tokelo ya bona ya ho ipiletsa.

## 9. PHUMANO YA RAPOROTO YA TEKOLO YA MOTHEO LE DINTLHA TSA LETSATSI LA HO KOPANA LE SETJHABA

Raporoto ya mathomo ya BAR le EMPR e tla fumaneha matsatsi a 30 e le hore setjhaba se ka e hlahloba, **ho tloha ka la 18 Phuptjane 2024 ho fihla ka la 26 Phupu 2024**, e le hore di I&Ap tsohle di ka e bala le ho ntsha maikutlo. Kopi e hatsitsweng e tla fumaneha ka la 18 Phuptjane 2024 sebakeng se boletsweng ka tlase:

Sebaka	Aterese	Nomoro
Laebrari ya Setjhaba ya Koppies	Dirkie Uys Street, Koppies, 9540	056 777 1713

Hape, kopi ya elektroniki e tla fumaneha websaeteng ya Shango Solutions ([www.shango.co.za/public-documents/](http://www.shango.co.za/public-documents/)) ho tloha ka la 18 Phuptjane 2024. Ho tla ba le letsatsi la dipuisano le setjhaba mabapi le dintlha tsa Tekolo ya Motheo mme batho ba tla ntsha maikutlo a bona ka raporoto e fanweng. Dintlha mabapi le letsatsi la dipuisano di boletswa mona:

Letsatsi	Nako	Sebaka	Aterese	Nomoro
12 Phupu 2024	10:00 - 14:30	Friesland Hotel	36 North Street, Koppies, 9540	071 449 0285

Ditlhahiso tsohle tsa setjhaba tse mabapi le raporoto ya mathomo ya BAR le EMPR di tla kenngwa raporotong e ntlafaditsweng e tla romelwa ho Balaodi ba Tshwanehang, e leng DMRE.

## 10. NAKO EO TUMELLO YA TIKOLOHO E HLOKWANG

Tumello ya Tikoloho e hlokeha ka nako e tshwanang le ya Tokelo ya ho Batla Diminerale.

## 11. TLHOKO LE HO LOKELA HA PROJEKE

Ha ho batlwa ha diminerale ho ka fumanwa ho atlehole mme mohlodi o kgona ho lekangwa, ho tla bontsha bokgoni ba ho atisa moruo ho ya pele. Sena se tla thusa hore batho ba fumane mesebetsi, ho be le menyetla ya nakong e tlang ya kgwebo, merokotso le kuno ya lekgetho.

## 12. MEMO YA SETJHABA

Mmadi o mengwa ho nka karolo ka bolokolohi le ho romela dipotso dife kapa dife kapa tlhahisoleseding e ka bang le seabo ho tshebetso ya Tekolo ya Motheo. Ho ba le seabo ha setjhaba ke karolo ya bohlokwa ya tshebetso. E tshohla tokelo ya I&AP ho ba leseding ka mesebetsi e lohothilweng le ho ba le seabo diqetong tse ba amang. Hape e fa EAP monyetla wa ho lekola le ho sekaseka dintho le dingongoreho tse hlahisitsweng ke I&AP kahoo e dumella EAP ho lekola dintho tsohle tse ka ba teng projekeng e lohothilweng.

## 13. MEMO YA YO INGODISA

Haeba o batla ho ingodisa jwalo ka I&AP (haeba ha o so ingodise pele ho mona) le hore o ka fana ka maikutlo ho BAR le EMPR, ka kopo tlatsa lethathamo la dipotso tse hoketsweng mme o le fetisetse ho Shango Solutions **pele ho la 26 Phupu 2024**.

Ke ha bohlokwa ho hopola hore karolo ya Tekolo ya Motheo e laolwa ke nako e behilweng ke molao. Ka lebaka leo, re kopa hore o romele kopo ya ho ingodisa le ditlhahiso tsa hao pele ho letsatsi le boletsweng ka hodimo. Ka kopo bolela le lebitso la projeke (New Kroonstad North) dipuisanong tsohle. Ela hloko hore ke ba ngodisitsweng feela e le di I&AP ba tlang ho ba le menyetla ya ho kenella karolong ya mosebetsi ona.

**Dipotso , maikutlo kapa dingongoreho dife kapa dife tse mabapi le kopo ena e ntlafaditsweng di ka lebiswa ho Shango Solutions:**

- Founo: 011 678 6504
- Fekse: 011 678 9731
- Imeili: zizo@shango.co.za
- Motho wa boiteanyo: Ms Zizo Siwendu
- Lebitso la projeke: New Kroonstad North
- Aterese ya poso: P.O. Box 2591, Cresta, 2118, South Africa

**Maikutlo kapa dingongoreho dife kapa dife ka kopo e ntlafaditsweng di ka boela tsa lebiswa ho Lefapha la Mehlopi ya Diminerale le Matla (kopi e romelwe ho Shango Solutions):**

- Founo: 057 391 1356
- Fekse: 057 357 6003
- Motho wa boiteanyo: Ms Nkateko Mhlarhi
- Aterese ya poso: Private Bag X33, Welkom, 9460
- Reference number ya DMRE: FS 30/5/1/1/3/2/10696 EM
- Iswa ho: Mookamedi wa Lebatowa – Lebatowa la Foreistata la Taolo ya Diminerale