



46. The Remainder of the Farm Brokopruim 2071
47. The Remainder of the Farm Serspine 2141
48. Portion 1 and the Remainder of the Farm Skarwater 2334

Located in the Magisterial District of Kroonstad
Free State Province

Total Extent of 18340,4526 Hectares .

Date: 23/02/2024

Applicant: White River Exploration (Pty) Ltd

Reg No: 2007/069523/07

Signed: 

Date: 26/02/2024

Regional Manager
Department of Minerals and Energy
Free State Province

Signed: _____

Date: _____



27°32'24"E

27°36'0"E

TOKOMANE YA TLHAHISOLESERING

Reef Exploration (Pty) Ltd

Ditshupiso Tsa DMRE:

Nomoro ya Tshupiso ya Kopo PR #: FS 30/5/1/1/2/10695
PR

Nomoro ya Kopo ya EA #: FS 30/5/1/1/3/2/1/10695 EM

Kopo ya Tokelo ya ho Batla Diminerale le ya Tumello
ya Tikoloho ya Projeke ya Bothaville Consolidated

Dunrose Trading 186 (Pty)
Ltd t/a Shango Solutions

HHK House
Cnr. Ethel Ave and Ruth Cr.
Northcliff
Gauteng

P. O. Box 2591
Cresta
2118

Phone: +27 11 678 6504
Fax: +27 11 678 9731

E-mail: tshililo@shango.co.za
Website: www.shango.co.za

REEF EXPLORATION PTY LTD
A LEXINGTON GOLD GROUP COMPANY

20 Phuptjane 2024

SEPHEO SA TOKOMANE ENA

- Tokomane ena ya Tlhahisoleseding ya Dikateng e fa wena jwalo ka Mothahaselli le Moamehi kakaretso ya projeke e sisintsweng.
- BID e mema wena jwalo ka Moamehi ya nang le Kgahleho le Kameho ho nka karolo ho Tshebetso ya Bonkakarolo ba Setjhaba e hlokehang.
- Tokomane ena e fa wena jwalo ka Mothahaselli le Moamehi monyetla wa ho nka karolo tlhophisong ya Tlaleho ya Motheo ya Tekolo le ho Lenaneo la Tsamaiso ya Tikoloho.
- Tokomane ena e boetse e fa wena Mothahaselli le Moamehi ho fa sehlopha sa projeke maikutlo a hao, dingongoreho le dintlha tseo o hananang le tsona mabapi le projeke e sisintsweng.

TSE KA HARE

1. Selelekela	Error! Bookmark not defined.
2. Sepheo sa Tokomane ya Tlhahisoleseding (BID)	3
3. Sebaka sa Projeke	3
4. Tlhaloso ya Projeke	6
5. Jioloji le Sepheo sa Tlhahlobo	7
6. Ditlhoko Tsa Tsamaiso	7
7. Ditlamorao Tse Tlwaelehileng Tse Amanang le Mesebetsi Ena	8
8. Tshebetso ya Tekolo le Tlhahlobo ya Kameho ya Tikoloho	8
9. Ho Fumaneha ha Tlaleho ya Tlhahlobo Le Dintlha Tsa Letsatsi la ho ya Sebakeng	9
10. Nako eo Tumello ya Tikoloho e Hlokwang	9
11. Tlhoko le ho Lokela ha Projeke	9
12. Memo ya Setjhaba	9
13. Memo ya ho Ingodisa	9

LETHATHAMO LA DITSHWANTSHO

Setshwantsho sa 1: Mmapa wa sebaka	4
--	---

LETHATHAMO LA DITHEIBOLE

Theibole 1: Dintlha tsa Sebaka.	5
--------------------------------------	---

1. SELELEKELA

Reef Exploration (Pty) Ltd (Reef Exploration) e rometse kopo ka inthanete ya Tumello ya ho Rafa le Tumello ya Tikoloho lefapheng la Mehlopi ya Diminerale le Matla la Foreistata ka la 4 Tihakubele 2024. Kopo ya inthaneteng e atlehile mme projeke e filwe nomoro ya tshupiso e latelang FS 30/5/1/1/2/10695 PR. Kopo ya ho fumana Tumello e amohetswe ka la 20 Tihakubele 2024. Haeba kopo e atleha, Reef Exploration e tla hlahloba hore na diminerale di a fumaneha sebakeng seo ho entsweng kopo ho sona. Ho tla batlwa diminerale tse latelang:

- Silevera
- Taemane (Alluvial)
- Salfire
- Gauta
- Sehlopha sa dimethale tsa Polatinamo
- Yuraniamo
- Mashala
- Rare Earths/ Matlotlo

Projeke e sisintsweng e tla tsejwa e le Bothaville Consolidated mme sepheo sa yona ke ho hlahloba le ho lekanya palo e tla ba teng ya diminerale. E le ho etsa mosebetsi wa dipatlisiso, Reef Exploration e hloka Tumello ho ya ka Molao wa Ntshetsopele ya Diminerale le Petroliamo wa 2002 (MPRDA, Molao wa 28 wa 2002). Reef Exploration e boetse e lokela ho fumana Tumello ya Tikoloho (EA) tumellanong le Molao wa Taolo ya Tikoloho wa Naha wa 1998 (NEMA, Molao wa. 107 wa 1998) o kenyeletsang hore ho romelwe Raporoto ya Tekolo ya Motheo (BAR), le Raporoto ya Lenaneo la Taolo ya Tikoloho (EMPR) hammoho le ho etsa Tshebetso ya ho ba le Seabo ha Setjhaba (PPP). Shango Solutions e kgethilwe ke Reef Exploration e le Setsebi sa Tekolo ya Tikoloho (EAP) molemong wa ho thusa ho finyella ditlhoko tseo.

2. SEPHEO SA TOKOMANE ENA

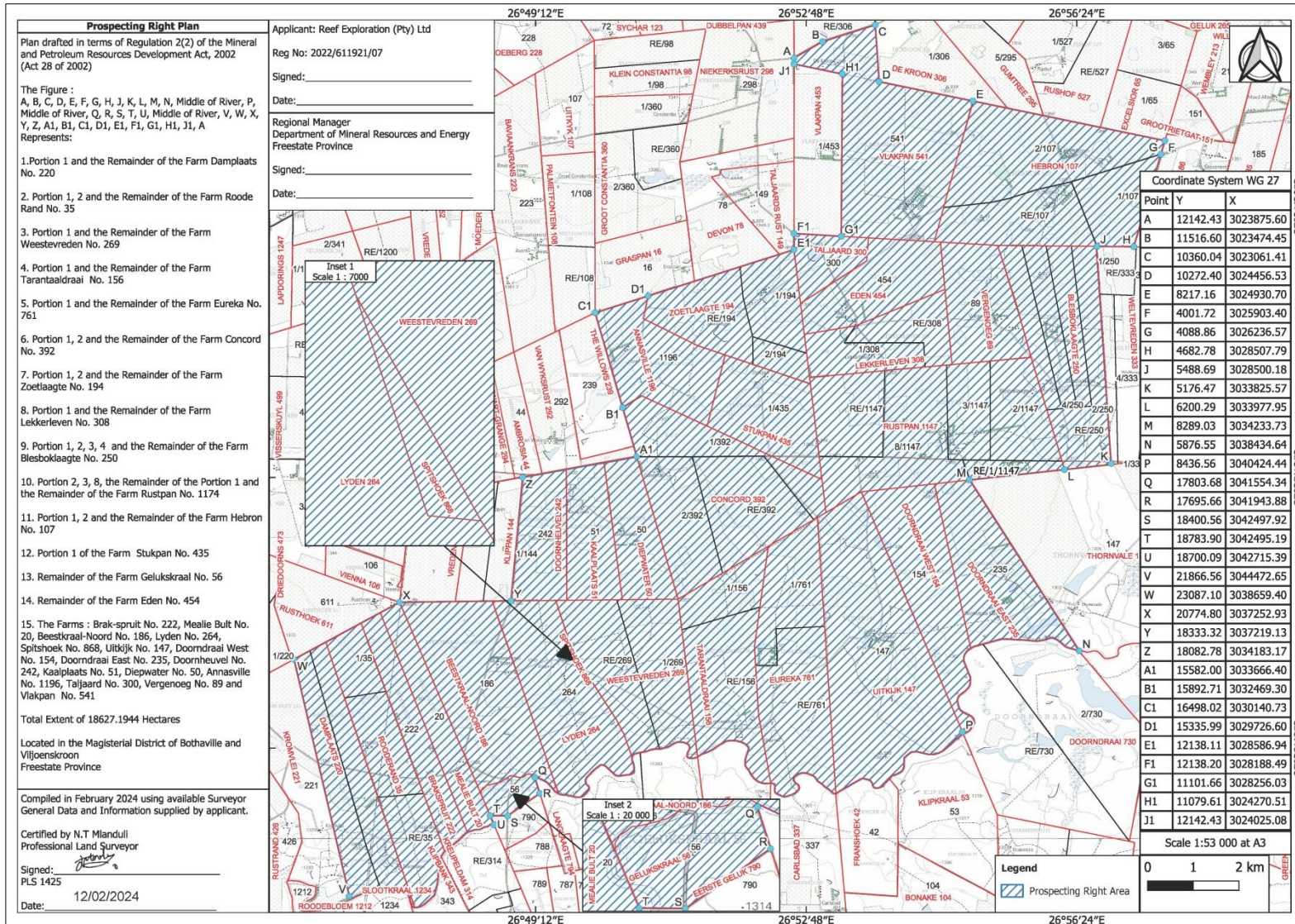
Ho ba le Seabo ha Setjhaba ho theha karolo ya bohlokwa tshebetsong ena. Tokomane ya Tlhabisoleding (BID) e fa mmadi monyetla wa ho fumana tlhabisoleding, ho ntsha maikutlo, ho hlahisa dintlha tse ngongorehisang le tshebedisanommoho tshebetsong ya ntshetsopele. Kabo ya tokomane ena ke mohato wa bohlokwa ho tsebisa mmadi hore na a ka kenella jwang tshebetsong.

Morero wa tokomane ena ke ho fa mmadi tlhabisoleding mabapi le projeke ho akareletsang le:

- Selelekela sa projeke ho akaretsa le dintlha tsa sebaka.
- Sesupo sa mesebetsi e lothothilweng le mekgwatshebetso ya molao eo projeke e etswang ka yona.
- Ditlamorao tsa tikoloho tse ka bang teng.
- Tlhaloso ya Tshebetso ya ho ba le Seabo ha Setjhaba (PPP) e lokelang ho latelwa.
- Tlhaloso ya kamoo motho a ka bang le seabo jwalo ka Mothahaselli le Moamehi (I&AP).

3. SEBAKA SA PROJEKE

Sebaka sa projeke se bohoho ba dihekthara tse 18 627.1944 (ha). Sebaka sena se Seterekeng sa Maseterata wa Bothaville le Viljoenskroon, e leng dikhilomithara tse ka bang 30 (km) botjhabela ho toropo ya Bothaville e Profinseng ya Foreistata, Afrika Borwa. Dikarolo tsa dipolasi tse (50) le tsona di sebakeng seo (Setshwantsho 1). Theibole 1 e bontsha dintlha tsa sebaka sa projeke.



Setshwantsho sa 1: Mmapa wa sebaka (Molao 2(2) Polane).

Theibole ya 1: Dintlha tsa Sebaka.

No.	Lebitso la Polasi	Karolo ya Polasi	Khoutu ya Mohlahlobi
1	Annasville No. 1196	Polasi	F0050000000011960000
2	Beestkraal-Noord No. 186	Polasi	F0050000000001860000
3	Blesboklaagte No. 250	Karolo e setseng	F0360000000002500000
4	Blesboklaagte No. 250	1	F0360000000002500001
5	Blesboklaagte No. 250	2	F0360000000002500002
6	Blesboklaagte No. 250	3	F0360000000002500003
7	Blesboklaagte No. 250	4	F0360000000002500004
8	Brak-spruit No. 222	Polasi	F0050000000002220000
9	Concord No. 392	Karolo e setseng	F0050000000003920000
10	Concord No. 392	1	F0050000000003920001
11	Concord No. 392	2	F0050000000003920002
12	Damplaats No. 220	Karolo e setseng	F0050000000002200000
13	Damplaats No. 220	1	F0050000000002200001
14	Diepwater No. 50	Polasi	F0050000000000500000
15	Doorndraai East No. 235	Polasi	F0360000000002350000
16	Doorndraai West No. 154	Polasi	F0360000000001540000
17	Doornheuvel No. 242	Polasi	F0050000000002420000
18	Eden No. 454	Karolo e setseng	F0360000000004540000
19	Eureka No. 761	Karolo e setseng	F0050000000007610000
20	Eureka No. 761	1	F0050000000007610001
21	Gelukskraal No. 56	Karolo e setseng	F0050000000000560000
22	Hebron No. 107	Karolo e setseng	F0360000000001070000
23	Hebron No. 107	1	F0360000000001070001
24	Hebron No. 107	2	F0360000000001070002
25	Kaalplaats No. 51	Polasi	F0050000000000510000
26	Lekkerleven No. 308	Karolo e setseng	F0360000000003080000
27	Lekkerleven No. 308	1	F0360000000003080001
28	Lyden No. 264	Polasi	F0050000000002640000
29	Mealie Bult No. 20	Polasi	F0050000000002000000
30	Roode Rand No. 35	Karolo e setseng	F0050000000000350000
31	Roode Rand No. 35	1	F0050000000000350001
32	Roode Rand No. 35	2	F0050000000000350002
33	Rustpan No. 1147	Karolo e setseng	F0050000000011470000
34	Rustpan No. 1147	Karolo e setseng ya 1	F0050000000011470001
35	Rustpan No. 1147	2	F0050000000011470002
36	Rustpan No. 1147	3	F0050000000011470003
37	Rustpan No. 1147	8	F0050000000011470008
38	Spitshoek No. 868	Polasi	F0050000000008680000
39	Stukpan No. 435	1	F0050000000004350001
40	Taljaard No. 300	Polasi	F0360000000003000000
41	Tarantaaldraai No. 156	Karolo e setseng	F0050000000001560000
42	Tarantaaldraai No. 156	1	F0050000000001560001
43	Uitkijk No. 147	Polasi	F0050000000001470000
44	Vergenoeg No. 89	Polasi	F0360000000000890000
45	Vlakpan No. 541	Polasi	F0360000000005410000

46	Weestevreden No. 269	Karolo e setseng	F00500000000026900000
47	Weestevreden No. 269	1	F00500000000026900001
48	Zoetlaagte No. 194	Karolo e setseng	F00500000000019400000
49	Zoetlaagte No. 194	1	F00500000000019400001
50	Zoetlaagte No. 194	2	F00500000000019400002

4. TLHALOSO YA PROJEKE

Dipatlisiso tse latelang di kentswe e le karolo ya PWP dilemong tsa 1 ho ya ho tsa 5 tsa projeke:

1. Ho Bokellwa ha Datha

Dithuto tsa Desktop:

Ho Bokella Datha:

[Selemo 1: Dikgwedi 12]

Data e hlalosa moo majwe a fumanehang teng esita le moruo wa ona e tla bolokwa e le hore e ka sebediswa. Datha ena e tla fumaneha ka mefuta e sa tshwaneng e kang mokoti wa nako e fetileng wa boro, dimmapa tsa lefatshe, dimmapa tsa jeolojikhale, diphuputso tsa jeofisikhale (tse akaretsang tse phatlaladitsweng tsa gravimetric, radiometric, magnetic, seismic, remote sensing, le dintlha le ha e le dife tse amanang le ho batlwa ha dirafshwa tsa nakong e fetileng). Datha ena e tla hlalolwa ka hloko ebe e netefatswe ho sebediswa mokgwa wa QA/QC).

Dathabeise, Dimmapa le Theho ya Mmotlolo wa Sejioloji:

[Selemo 1: Dikgwedi 6]

Datha e bokeletsweng e tla kenngwa dathabeising e le nngwe ka morero wa ho hlalisa dintlha tse hlokwang ho sebediswa mmapa wa GIS o tla hlaha ka mokgwa wa elektronike. Disete tse fapaneng tsa datha di tla manehwa mmampeng wa projeke le dibakeng tse e potileng e le ho hlalisa mmotlolo wa sejioloji. Mmotlolo ona o tla sebediswa ho ntlafatsa lenaneo la tshibollo bakeng sa sebaka se shebilweng.

Ketelo ya Sebaka:

[Selemo 1: Beke 1]

Mokopi o tla etela sebakeng seo ho itlwaetsa dintlha tse ding (tse kang merafo ya kgale, dibopeho tsa motheo, makatso, metsi le mekgwabo) tse sebakeng sa projeke mme a kopane le beng ba dibaka. Leeto lena le tla netefatsa meedi le mesebetsi e etswang mapolasing. Ho tla etswa boiteko ba ho hlwaya dintho tse ka amang lenaneo la ho batlisisa.

2. Phuputso ya Jeofisikhale

Phuputso ya Jeofisikhale le ya *Seismic*:

[Selemo 2: Dikgwedi 12]

Pokello ya Datha le Tlhaloso ya Yona:

[Selemo 2: Dikgwedi 12]

Tlhakiso ya Mmotlolo wa Jeolojikhale:

[Selemo 2: Dikgwedi 12]

Diphuputso tsa sebaka tse entsweng nako e fetileng ke dikhamphani tsa merafo di a fumaneha mme ho ke ke ha hlokeha hore ho etswe diphuputso tse ding. Patlisiso ya tshitshinyeho ya mobu e entswe dikhilomithara ke ka bang 60 Anglo Gold Ashanti mme dipuisano tsa pele di bontsha hore ho ka kgonahala hore ho rekwe sebaka seo. Dipatlisiso tsa aeromagnetic di a fumaneha mme di tla fumanwa le ho hlalosa hammoho le mekoti e tshiekilweng le datha e nngwe. Haeba sephetho sa mosebetsi o entsweng selemong sa pele se le setle, ho tla etswa qeto ya ho reka diphuputso tseo.

3. Ho Hlahloba Mekoti hape, le ho Loga hape le Ho Sampola hape

[Selemo 2: Dikgwedi 6]

Ho latela mmotlolo wa ho qala wa sejioloji, mekoti ya mantlha e ileng ya tshiekwa e tla hlalolwa hape mme ho be le dipuisano le beng ba sebaka e le ho fumana tumello ya tshebetso. Hang ha ho fihletswe botebong ba didiba, bokahare

boo bo tla rekotwa mme haeba ho hloka hloka bo tla nka disampole hape. Tshebetso ena e tla dumella netefatso ya di logo tsa mekoti mme e tla eketsa tshepo ho datha e tsheheditse mmatlolo wa sejioloji.

4.1 Ho tjheka

[Selemo 3: Dikgwedi 12]

Ho ipapisitswe le mmatlolo wa pele wa jeoloji o thehilweng, ho tla etswa lenaneo la ho tjheka mekoti e meraro (boteboba dimithara tse 700 mokoti ka mong (m)).

4.2 Tlhahlobo ya Mmatlolo wa Jeoloji

[Selemo 3: Dikgwedi 6]

Datha e fumanweng ha logwa le ho sampola dikoti tsa kgale e tla kopanngwa mmatlolong wa sejioloji ho netefatsa sebopeho sa jioloji le moo ho lokelang ho tjhekwa teng.

5.1 Ho Tjhekwa

[Selemo 4: Dikgwedi 12]

Haeba mosebetsi wa ho tjheka o tla etswa selemong sa 3 o atleha, ho tla tjhekwa boela ho tjhekwe mekoti e meng e meraro (mekoti o le mong e be botebo ba dimithara tse 700). Mosebetsi wa ho tjheka o tla etswa ka selemo sa 4 o tla itshitleha ka maphumela a mosebetsi o entsweng selemong sa 3.

5.2 Phethelo ya Mmatlolo wa Jeolojikhale wa 3D

[Selemo 5: Dikgwedi 4]

Ho latela ho logwa hape le ho sepolwa hape ha botebo ba nalane, mmatlolo wa sejioloji wa 3D o tla kengwa lesedi le letjha mmeo phethelwe bakeng sa tshebediso nakong ya kakanyo ya disebediswa.

5.3 Khoutu e Dumellanang le Kakanyo ya Disebediswa

[Selemo 5: Dikgwedi 4]

Ka tshebediso ya mmatlolo o phethetsweng wa sejioloji hammoho le diphepo tse fumanweng ha ho tjhekwa, ho tla etswa khoutu e dumellanang le kakanyo ya disebediswa.

5.4 Tekolo ya Projeke

[Selemo 5: Dikgwedi 4]

Haeba mesebetsi ya tlhahlobo e bonahala e atleha, ho tla etswa tekolo ya projeke. Nakong ya tekolo ena, disebediswa di tla bolokwa mme ho tla etswa moralo le kemiso. Sena se tla bontsha hore na sebaka se kgethilweng se loketse bakeng sa ho rafa kapa tjhe.

5. JIOLOJI LE SEBOPEHO SA TLHAHLOBO

Karolo e tlang ho hlahlojwa e na le (i) mesaletsa e mesesaane ya Quaternary, moo ho yona ho fumanweng lehlabathe le kerabole melapong, ho boetse ho na le (ii) Karoo Dolerite Suite le (iii) mesaletsa ya majwe a Karoo Supergroup. Witwatersrand Supergroup e na le gauta eo hangata e aperweng ke lehlabathe le kwahelang dimithara tse 500 ya sehlopha sa Karoo Supergroup, mme lehlabathe lena le na le majwe a tswakilweng a Sehlopha sa Eccca. Sehlopha sa Eccca se na le mekoti e sa tebang ha kaalo ya mashala a ka sebediswang.

Welkom Goldfield e na le merafo le leshome le motso o mong (11) pakeng tsa Allanridge, Welkom le Virginia, e dikhilomithara tse 270 borwa bophirimela ho Johannesburg. Merafong ena yohle ho ile ha fumanwa gauta e boima bo ka bang dikhilograma tse dimilione tse 9.6. Ha jwale sehlopha sa Central Rand sa Witwatersrand Supergroup se na le dibaka tse nne tseo ho ka fumanwang diminerale ho tsona teropong ya Bothaville. Dibaka tseo ke Basal Reef, Big Pebble Conglomerate, A Reef le B Reef. Ho phaella ho fumaneng gauta, ho latela histori le majwe a ntseng a fumanwa morao tjena, ho lebeletse hore ho tla fumanwa le diminerale tse kang silvera, yuraniamo, salfire, taemane, matlotlo le sehlopha sa dimethale tsa polatinamo.

6. DITLHOKO TSA TSAMAISO

Morero o sisintsweng o tla kenyeletsa ditshebetso tse latelang tsa kopo le mesebetsi e amanang le yona:

- Pokello ya BAR le EMPR.
- Pokello ya Raporoto ya Sephetho.

- Ho kenyeletswa ha Setjhaba (PPP).

Ho lebeleletse hore mesebetsi e latelang ya NEMA e kenyeletse kopong ena:

- **Tshebetso ya 1 - Mosebetsi wa 20 wa GNR 327 (jwalo ka ha e ntjhafaditswe ka la 11 Phuptjane 2021):** Mosebetsi ofe kapa ofe ho kenyeleditswe le ho etswa ha mosebetsi o hlohang tokelo ya ho batla diminerale ho latela Karolo ya 16 ya Molao wa Ntshetsopele ya Diminerale le Petroliamo wa 2002 (Molao wa 28 wa 2002), ho akareletsa le tshebetso le ha e le ofe e amehang jwalo ka ha ho hlahositswe ho Listing kapa ho Listing 3 ya 2014, e hlokalang bakeng sa tokelo ya ho batlisisa.
- **Tshebetso ya 3 - Mosebetsi wa 12(b)(i) le (ii) wa GNR 324 (wa 2017):** Ho hlekwa ha sebaka sa diskweremithara tse 300 kapa ho feta tsa dimela tsa matswallwa ntle le moo ho hlokalang ho hlekwa ha dimela tsa matswallwa bakeng sa sepheo sa ho lokisa ho entsweng ho latela moralo wa taolo ya ho lokisa (i) dibaka tse thathamisitsweng ho ya ka karolo ya 52 ya NEMA kapa pele ho hatiswa lethathamo leo, ke sebakeng se thibetsweng ho ya ka Tekolo ya Naha ya Mefuta futa ya Dihlodilweng ya 2004 le (ii) sebakeng se hlwauweng e le sa tlhaho ho ya ka di polane.

7. DITLAMORAO TSE TLWAELEHILENG TSE AMANANG LE MESEBETSI ENA

Ditlamorao tse latelang di tla hlahlojwa le ho kenyeletswa tokomaneng ya BAR:

- Dikotso tsa polokeho le tshireletseho ho beng le badudi ba molao.
- Tshitiso ya tshebediso ya mobu.
- Dibaka tsa botjhaba/setso.
- Tahleho/tshenyo ya diphofolo le dimela.
- Tshenyo ya marangrang a seng a le teng.
- Menahano e se nang bonnete le ditebello.
- Ho tloswa ha dijalo.
- Ho hlokisa mobu botsitso /ho ribitla mobu/tshilafalo ya mobu.
- Kgoholeho.
- Tshenyo ya dibopeho tsa bojalefa.
- Lerata.
- Kenyeletso ya mefuta ya melata.
- Ho kubeletsa (lerole).
- Ho dutla ha khabone /tshilafatso.
- Tshilafalo ya metsi.
- Ho baka le ho lahla ditshila.

8. TSHEBETSO YA TEKOLO YA MOTHEO

Mehato ya sehlooho e kenyeletsang tshebetso e tlwaelehileng ya Tekolo ya Motheo e hlahositswe ka tlase.

Thakgolo le Kopo

- Tlatsa le ho romela diforomo tsa kopo.

Tshebetso ya ho ba le Seabo ha Setjhaba

- Ho hlwauwa ha I&APs.
- Tokiso ya ditokomane tsa tsebiso (BID, lengolo, papatso, tsebiso ya sebaka, foromo ya ngodiso).
- Tsebiso ya I&APs le bathahaselli ba loketseng ba projeke.
- Ho beha ditsebiso le dipapatso.

Re
mona

BAR le EMPR

- Pokeletso ya nthla e qalang ya datha le tlhwao ya ditlamorao tse ka bang teng tse amanang le projeke.
- Tekolo ya dintlha tse ding tsa projeke.
- Boithuto bo kgethehileng bo entsweng (ha ho hlokeha).
- Ditlamorao tse ka bang teng di a lekannwa le mehato e lohothilweng ya ho di fokotsa.
- Ho beha mananeo a lohothilweng leihlo o netefatsa hore mehato ya phokotso e a kgoneha.
- BAR le EMPR ya mantlha e fuwa setjhaba le balaodi ba Mmuso bakeng sa tlhahlobo le maikutlo.

- BAR le EMPR e ya ntlafatswa ho kenyeletsa maikutlo ohle pele e romelwa ho DMRE.
- DMRE e amohela BAR le EMPR kapa e kopa tlhahisoleseding e eketsehileng.

Rekoto ya Qeto

- DMRE e etsa qeto ya ho amohela kapa ho hana kopo bakeng sa Tumello ya Tikoloho.
- I&APs bohle ba tsebiswa sephetho sa kopo le tokelo ya bona ya ho ipiletsa.

9. PHUMANO YA RAPOROTO YA TEKOLO YA MOTHEO LE DINTLHA TSA LETSATSI LA HO KOPANA LE SETJHABA

Raporoto ya mathomo ya BAR le EMPR e tla fumaneha matsatsi a 30 e le hore setjhaba se ka e hlahloba, **ho tloha ka la 18 Phuptjane 2024 ho fihla ka la 22 Phupu 2024**, e le hore di I&Ap tsohle di ka e bala le ho ntsha maikutlo. Kopi e hatisisweng e tla fumaneha sebakeng se boletsweng ka tlase:

Sebaka	Aterese	Nomoro
Bothaville Golf Club	Off Greyling Street, Bothaville GPS co-ordinates: -27.394164, 26.625155	056 515 2951 083 409 5214

Hape, kopi ya elektroniki e tla fumaneha websaeteng ya Shango Solutions (www.shango.co.za/public-documents/) ho tloha ka la 18 Phuptjane 2024. Ho tla ba le letsatsi la dipuisano le setjhaba mabapi le dintlha tsa Tekolo ya Motheo mme batho ba tla ntsha maikutlo a bona ka raporoto e fanweng. Dintlha mabapi le letsatsi la dipuisano di boletswa mona:

Letsatsi	Nako	Sebaka	Nomoro
11 Phupu 2024	09:00-14:30	Bothaville Golf Club	056 515 2951 083 409 5214

Ditlhahiso tsohle tsa setjhaba tse mabapi le raporoto ya mathomo ya BAR le EMPR di tla kenngwa raporotong e ntlafaditsweng e tla romelwa ho Balaodi ba Tshwanehang, e leng DMRE.

10. NAKO EO TUMELLO YA TIKOLOHO E HLOKWANG

Tumello ya Tikoloho e hlokeha ka nako e tshwanang le ya Tokelo ya ho Batla Diminerale.

11. TLHOKO LE HO LOKELA HA PROJEKE

Ha ho batlwa ha diminerale ho ka fumanwa ho atlehile mme mohlodi o kgona ho lekannngwa, ho tla bontsha bokgoni ba ho atisa moruo ho ya pele. Sena se tla thusa hore batho ba fumane mesebetsi, ho be le menyetla ya nakong e tlang ya kgwebo, merokotso le kuno ya lekgetho.

12. MEMO YA SETJHABA

Mmadi o mengwa ho nka karolo ka bolokolohi le ho romela dipotso dife kapa dife kapa tlhahisoleseding e ka bang le seabo ho tshebetso ya Tekolo ya Motheo. Ho ba le seabo ha setjhaba ke karolo ya bohlokwa ya tshebetso. E tshohla tokelo ya I&AP ho ba leseding ka mesebetsi e lohothilweng le ho ba le seabo diqetong tse ba amang. Hape e fa EAP monyetla wa ho lekola le ho sekaseka dintho le dingongoreho tse hlahisitsweng ke I&AP kahoo e dumella EAP ho lekola dintho tsohle tse ka ba teng projekeng e lohothilweng.

13. MEMO YA HO INGODISA

Haeba o batla ho ingodisa jwalo ka I&AP (haeba ha o so ingodise pele ho mona) le hore o ka fana ka maikutlo ho BAR le EMPR, ka kopo tlatsa lethathamo la dipotso tse hoketsweng mme o le fetisetse ho Shango Solutions **pele ho la 22 Phupu 2024**.

Ke ha bohlokwa ho hopola hore karolo ya Tekolo ya Motheo e laolwa ke nako e behilweng ke molao. Ka lebaka leo, re kopa hore o romele kopo ya ho ingodisa le ditlhahiso tsa hao pele ho letsatsi le boletsweng ka hodimo. Ka kopo bolela le lebitso la projeke (Bothaville Consolidated)) dipuisanong tsohle. Ela hloko hore ke ba ngodisitsweng feela e le di I&AP ba tlang ho ba le menyetla ya ho kenella karolong ya mosebetsi ona.

Dipotso, maikutlo kapa dingongoreho dife kapa dife tse mabapi le kopo ena e ntlafaditsweng di ka lebiswa ho Shango Solutions:

- Founo: 011 678 6504
- Fekse: 011 678 9731
- Imeili: tshililo@shango.co.za
- Motho wa boiteanyo: Ms Tshililo Malange
- Lebitso la projeke: Bothaville Consolidated
- Aterese ya poso: P.O. Box 2591, Cresta, 2118, South Africa

Maikutlo kapa dingongoreho dife kapa dife ka kopo e ntlafaditsweng di ka boela tsa lebiswa ho Lefapha la Mehlopi ya Diminerale le Matla (kopi e romelwe ho Shango Solutions):

- Founo: 057 391 1395
- Fekse: 057 357 6003
- Motho wa boiteanyo: Ms Happy Maphisa
- Aterese ya poso: Private Bag X33, Welkom, 9460
- Nomoro ya Tshupiso ya DMRE: FS 30/5/1/1/3/2/10695 EM
- Iswa ho: Mookamedi wa Lebatowa – Lebatowa la Foreistata la Taolo ya Diminerale