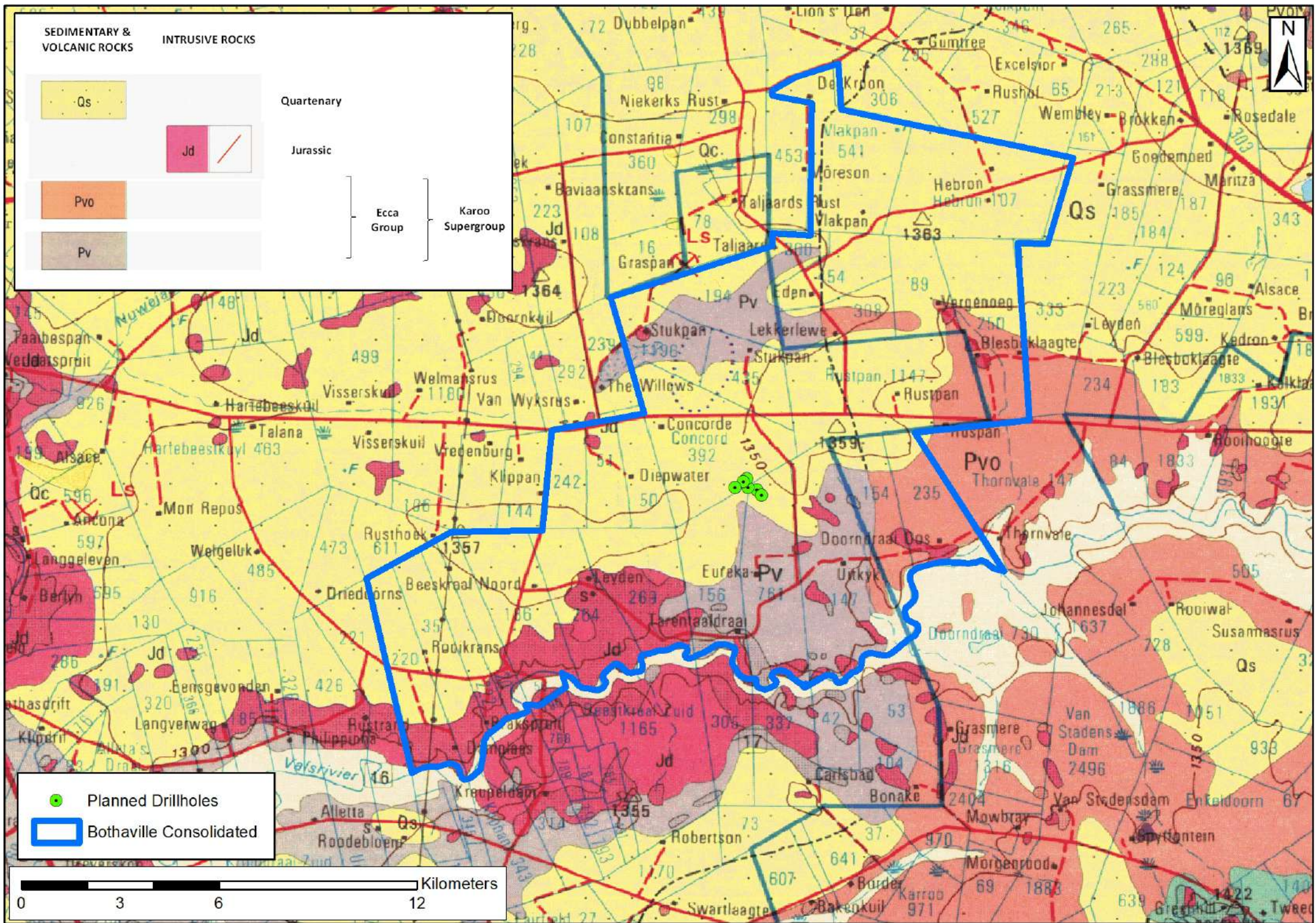
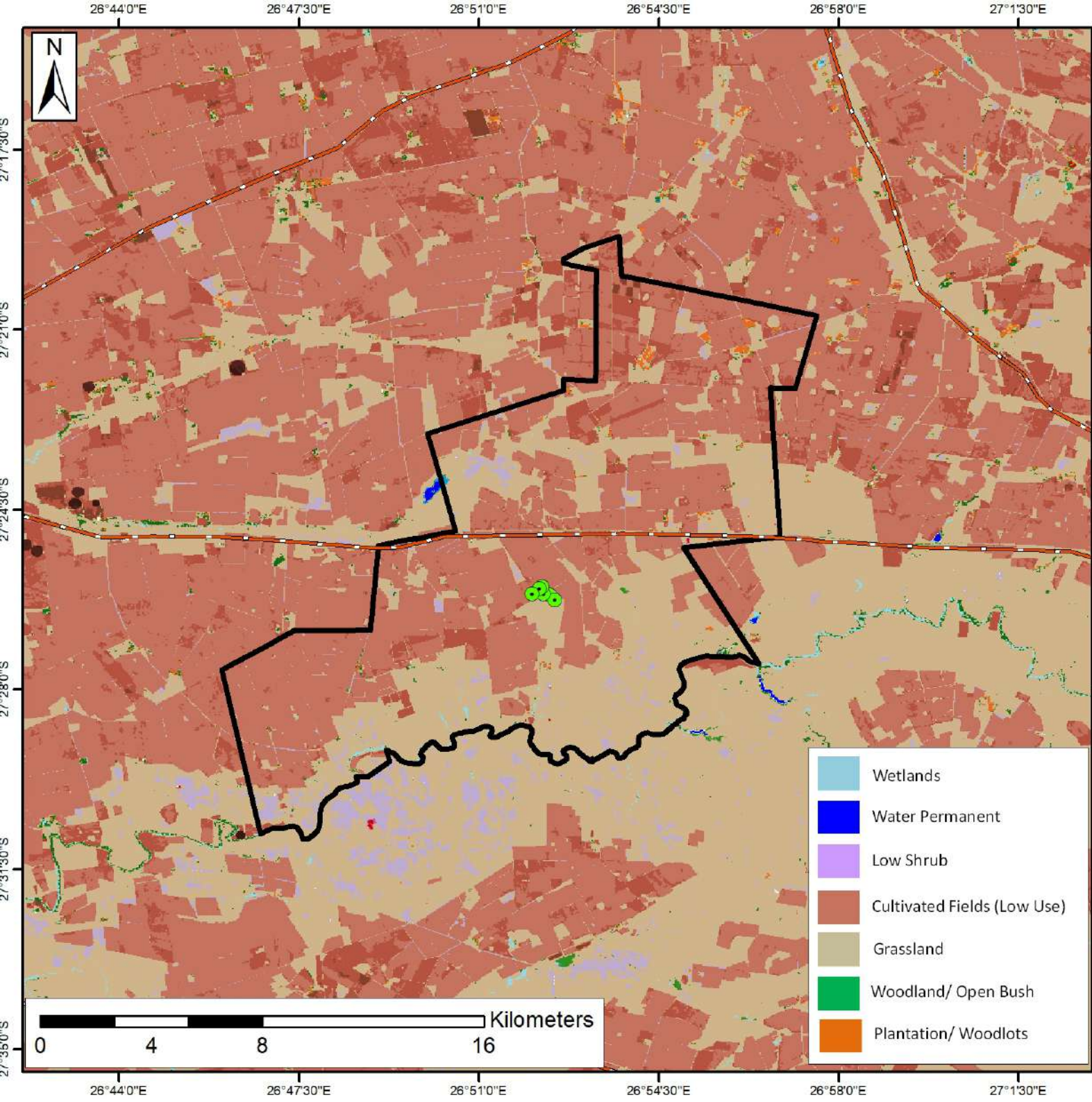




## Appendix E: Project Maps





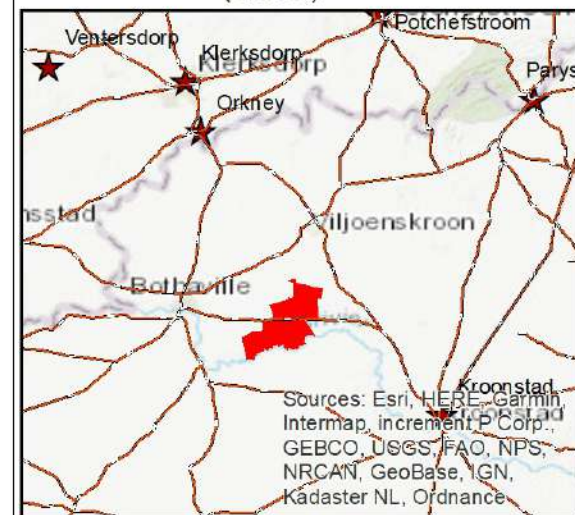
# Land Use Cover

Bothaville Consolidated

- Planned Drillholes
- Provincial Roads
- Bothaville Consolidated

**Source:**

South African National Biodiversity Institute (SANBI)



- Wetlands
- Water Permanent
- Low Shrub
- Cultivated Fields (Low Use)
- Grassland
- Woodland/ Open Bush
- Plantation/ Woodlots

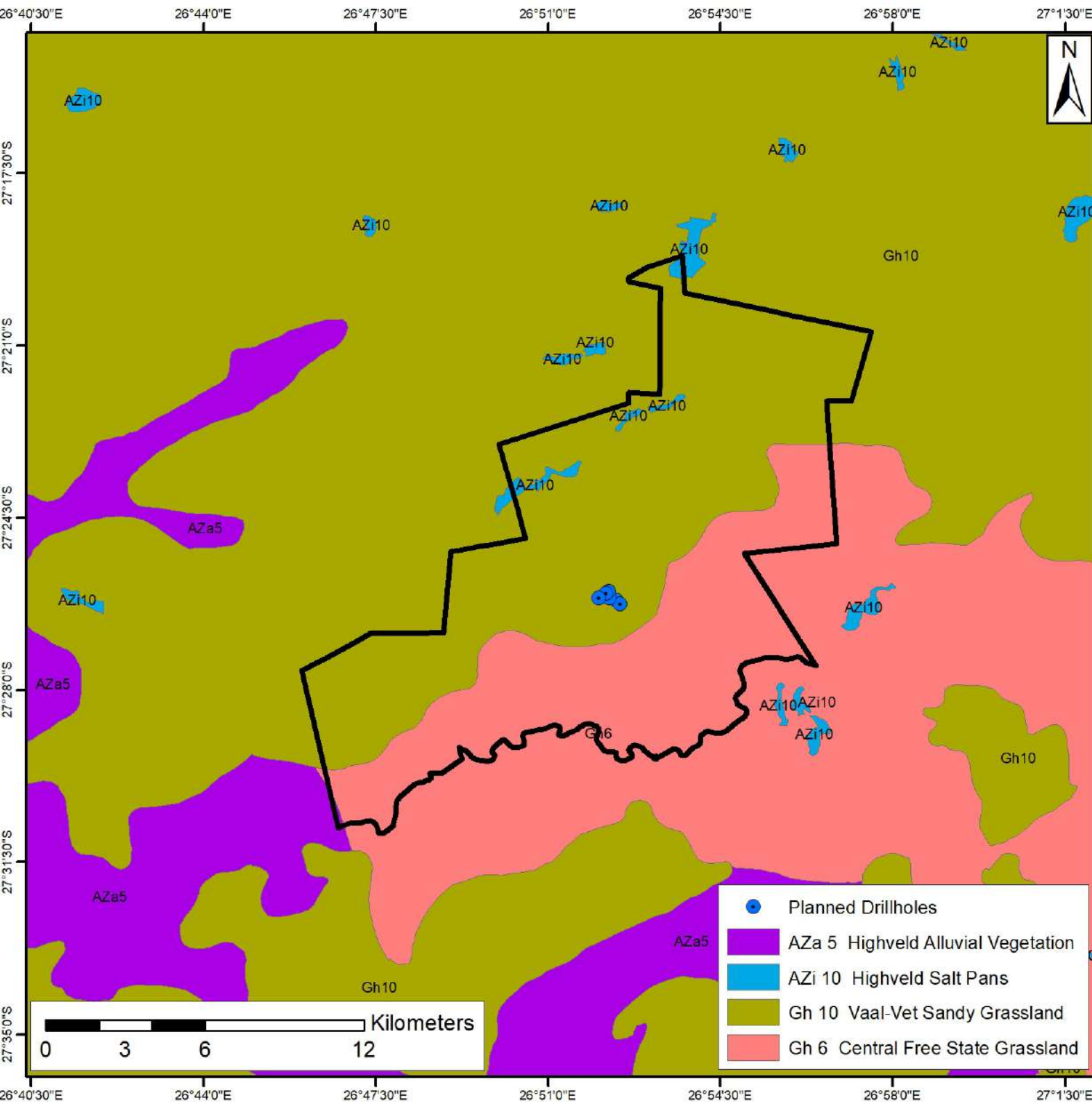
Coord System: GCS WGS 1984

Datum: WGS 1984

Units: Degrees

Prepared by:



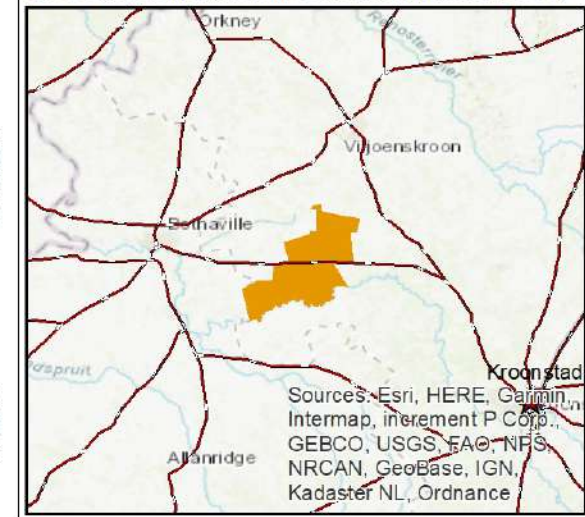


# Vegetation

Bothaville Consolidated

- Planned Drillholes
- Bothaville Consolidated

**Source:**  
Vegetation of South Africa, Lesotho and Swaziland (Mucina and Rutherford 2006)



Coord System: GCS WGS 1984

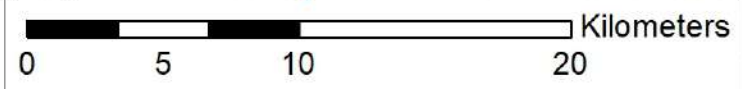
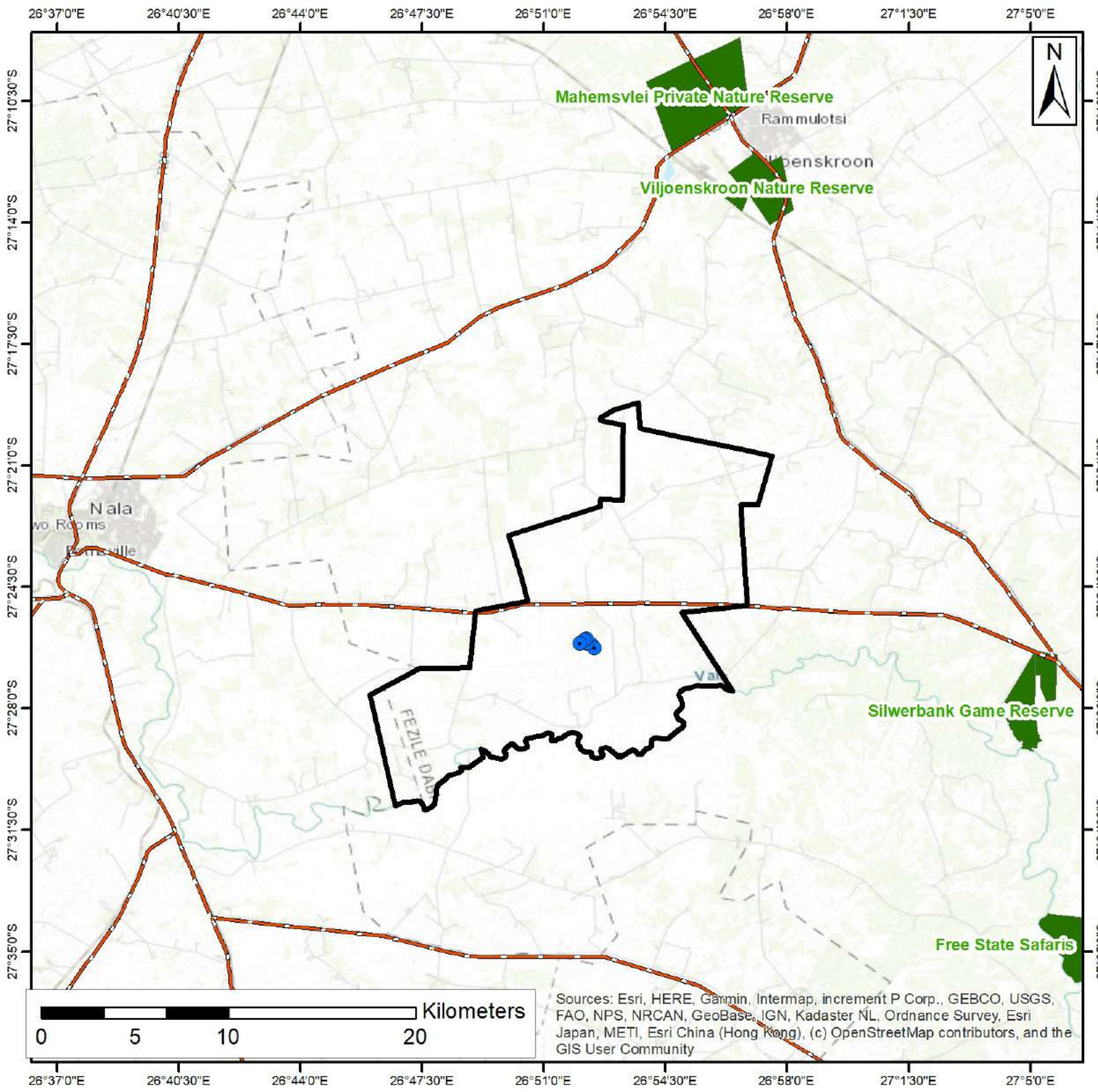
Datum: WGS 1984

Units: Degrees

- Planned Drillholes
- AZa 5 Highveld Alluvial Vegetation
- AZi 10 Highveld Salt Pans
- Gh 10 Vaal-Vet Sandy Grassland
- Gh 6 Central Free State Grassland

Prepared by:





Sources: Esri, HERE, Garmin, Intermap, increment P Corp., GEBCO, USGS, FAO, NPS, NRCAN, GeoBase, IGN, Kadaster NL, Ordnance Survey, Esri Japan, METI, Esri China (Hong Kong), (c) OpenStreetMap contributors, and the GIS User Community

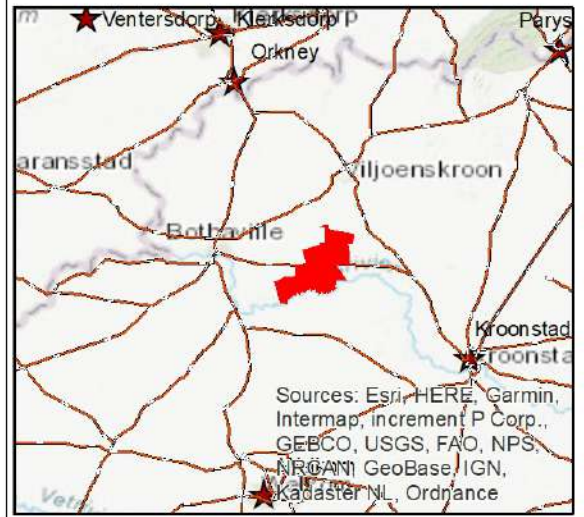
## Protected Area

Bothaville Consolidated

-  Planned Drillholes
-  Provincial Roads
-  Protected Area
-  Bothaville Consolidated

### Source:

Department of Economic, Small Business Development, Tourism and Environmental Affairs (DESTEA)



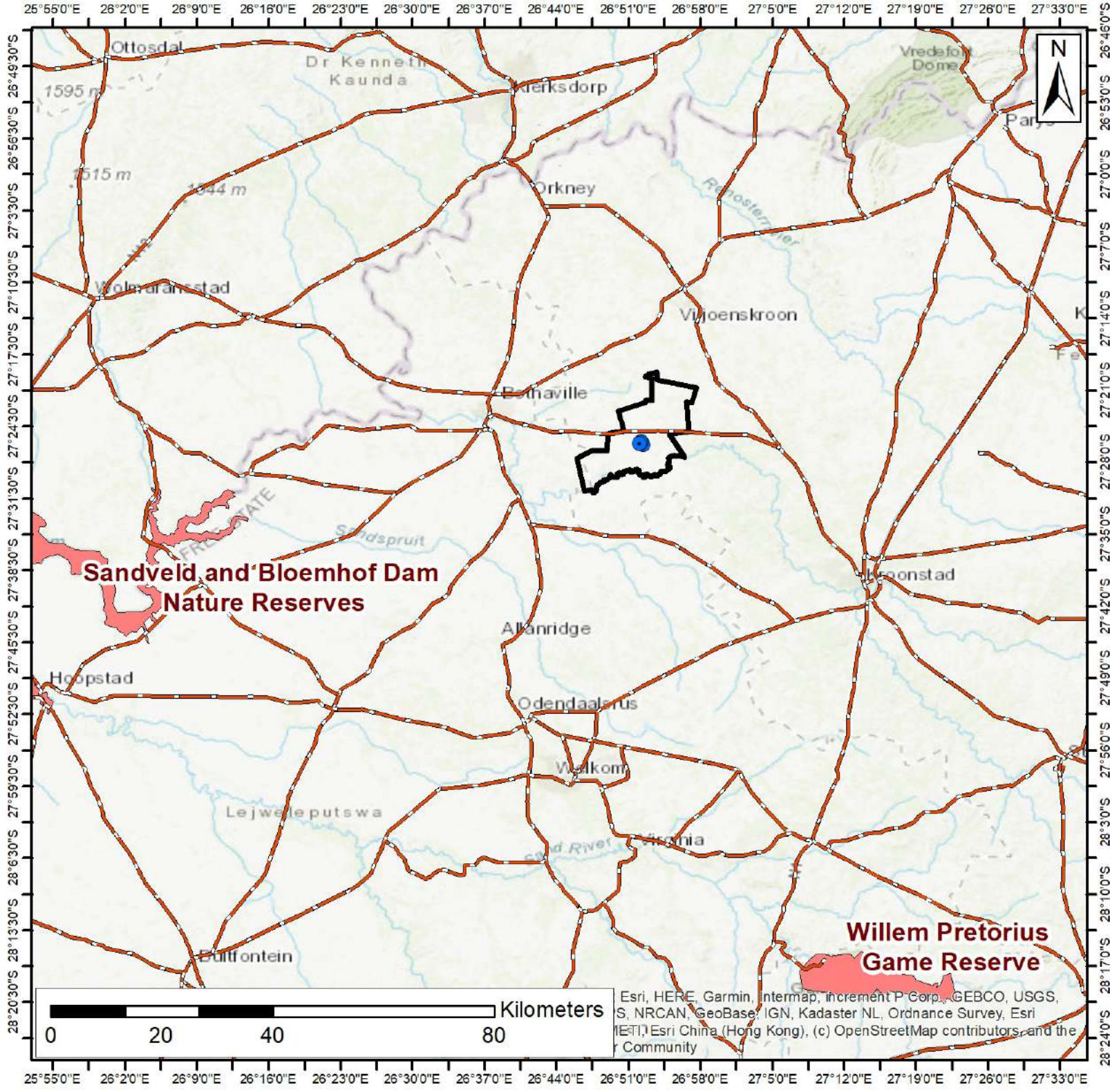
Coord System: GCS WGS 1984

Datum: WGS 1984

Units: Degrees

Prepared by:



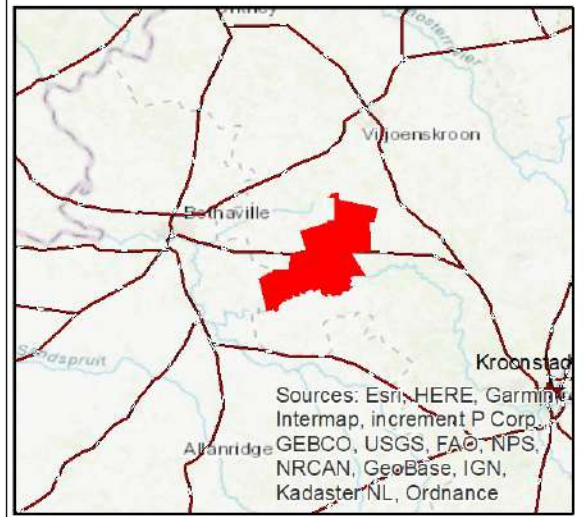


# Important Bird Areas

Bothaville Consolidated

- Planned Drillholes
- Provincial Roads
- Important Bird Areas
- Bothaville Consolidated

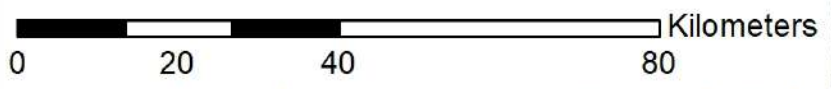
**Data Source:**  
Bird Life South Africa



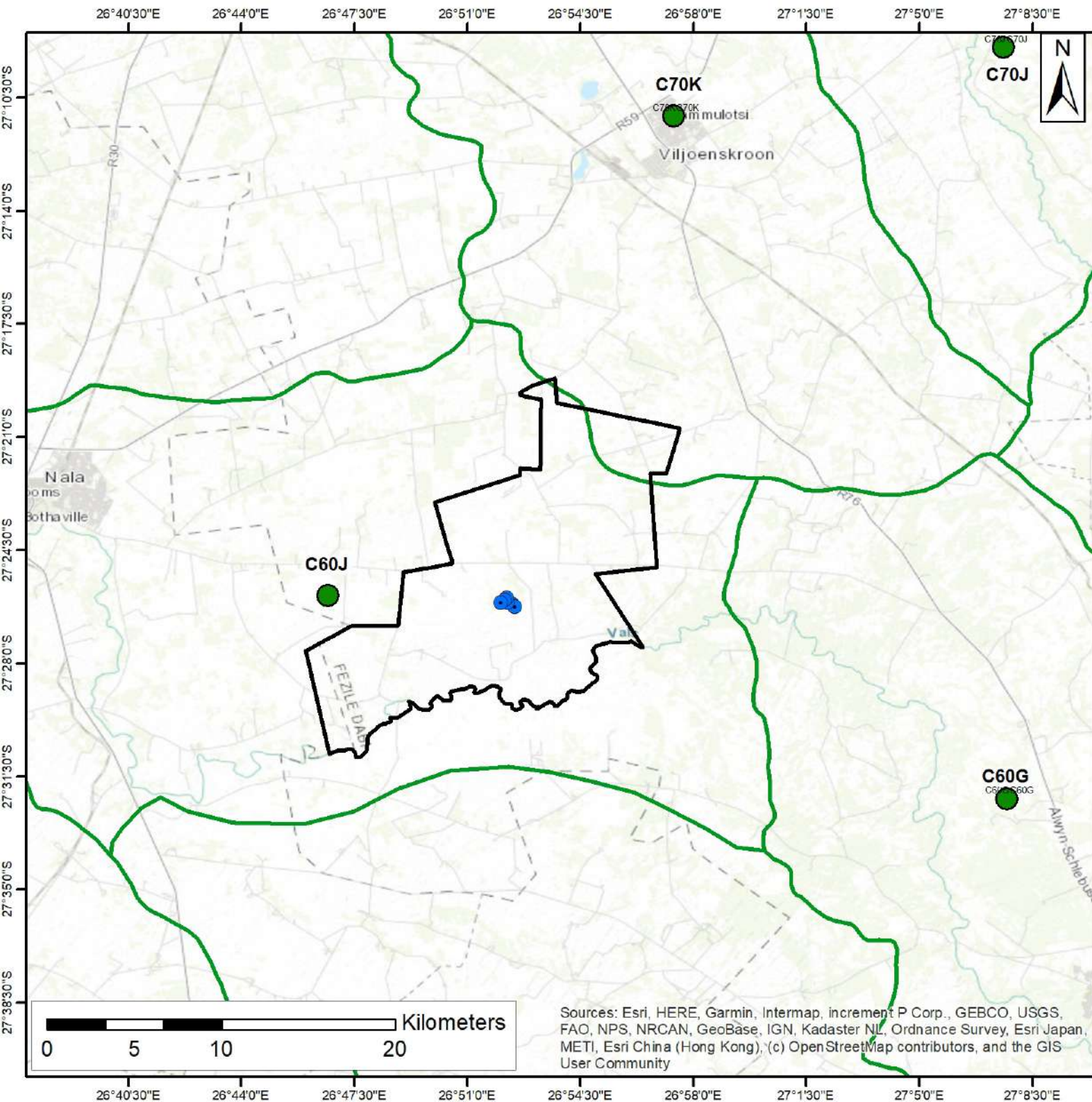
Sources: Esri, HERE, Garmin, Intermap, increment P Corp., GEBCO, USGS, FAO, NPS, NRCAN, GeoBase, IGN, Kadaster NL, Ordnance

Coord System: GCS WGS 1984  
Datum: WGS 1984  
Units: Degrees

Prepared by:



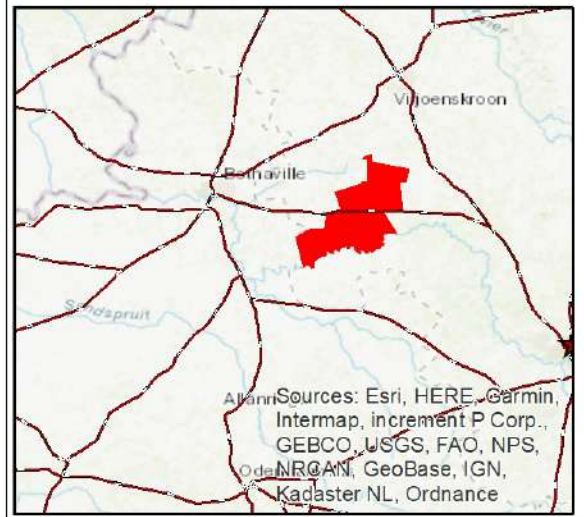
Esri, HERE, Garmin, Intermap, increment P Corp., GEBCO, USGS, NRCAN, GeoBase, IGN, Kadaster NL, Ordnance Survey, Esri (SIA), Esri China (Hong Kong), (c) OpenStreetMap contributors, and the GIS User Community



# Quaternary Catchments

- Bothaville Consolidated
- Planned Drillholes
  - Quaternaries\_points
  - Quaternaries Boundary
  - Bothaville Consolidated

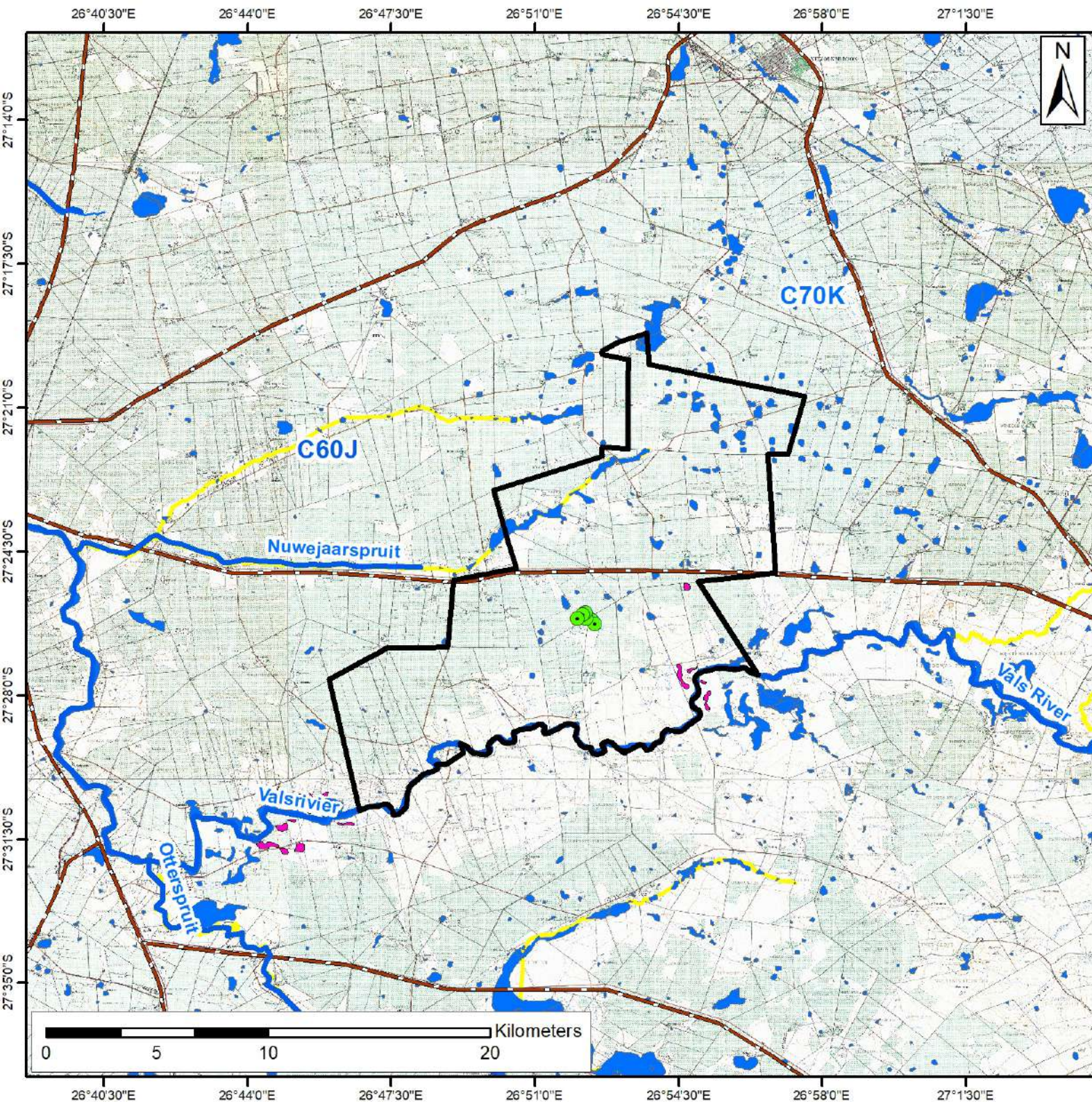
**Source:**  
Department of Water and Sanitation



Coord System: GCS WGS 1984  
Datum: WGS 1984  
Units: Degrees

Prepared by:

Sources: Esri, HERE, Garmin, Intermap, increment P Corp., GEBCO, USGS, FAO, NPS, NRCAN, GeoBase, IGN, Kadaster NL, Ordnance Survey, Esri Japan, METI, Esri China (Hong Kong), (c) OpenStreetMap contributors, and the GIS User Community

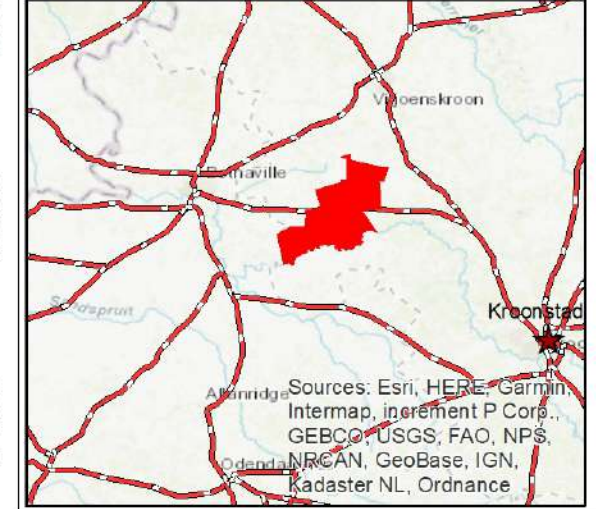


# NFEPA Rivers and Wetlands

## Bothaville Consolidated

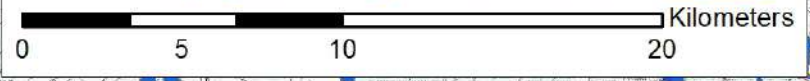
- Planned Drillholes
- Roads
- Bothaville Consolidated
- NFEPA Rivers (PES1999)**
  - Phase 2 FEPA
  - Non FEPA
- NFEPA Wetlands**
  - Non FEPA
  - True FEPA

**Water Management Area:**  
Vaal (C60J Quaternary Catchment)

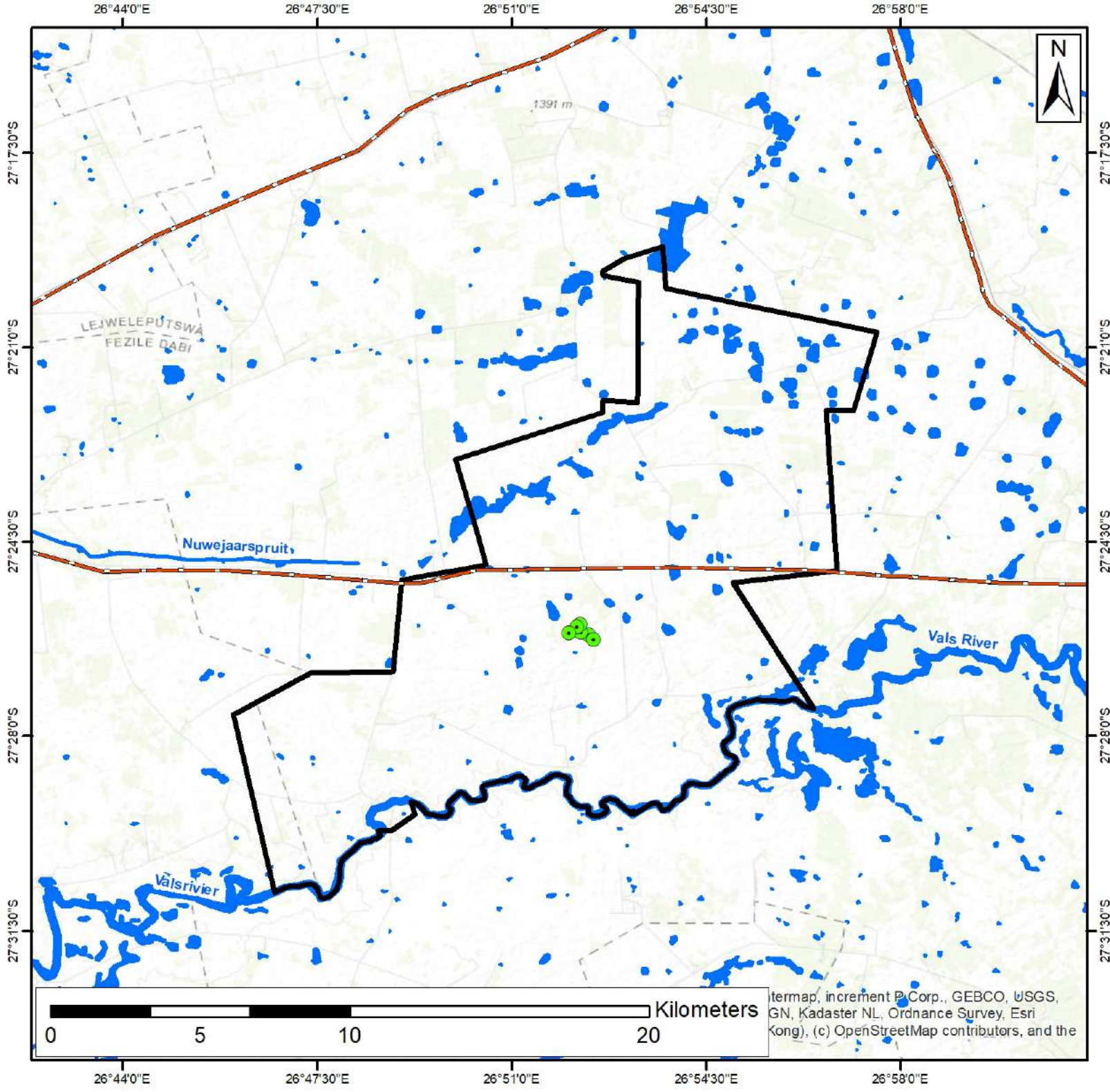


Coord System: WGS 1984  
Datum: WGS 1984  
Units: Degrees  
Source: NFEPA Wetland Map

Prepared by:





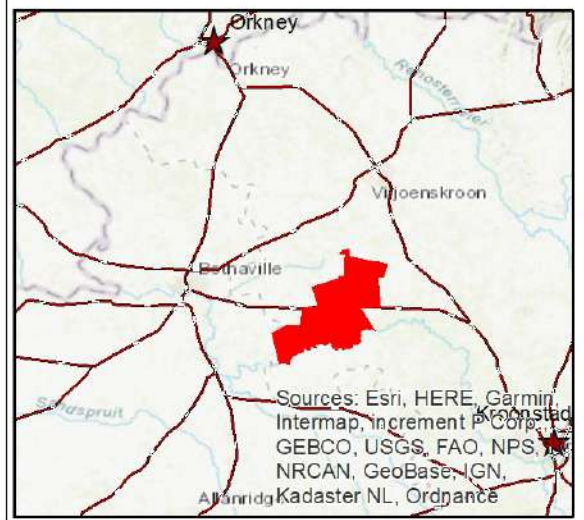


# Surface Hydrology

Bothaville Consolidated

- Planned Drillholes
- Rivers
- Provincial Roads
- NFEPA Wetlands
- Bothaville Consolidated

**Data Source:**  
Department of Water and Sanitation



Coord System: GCS WGS 1984

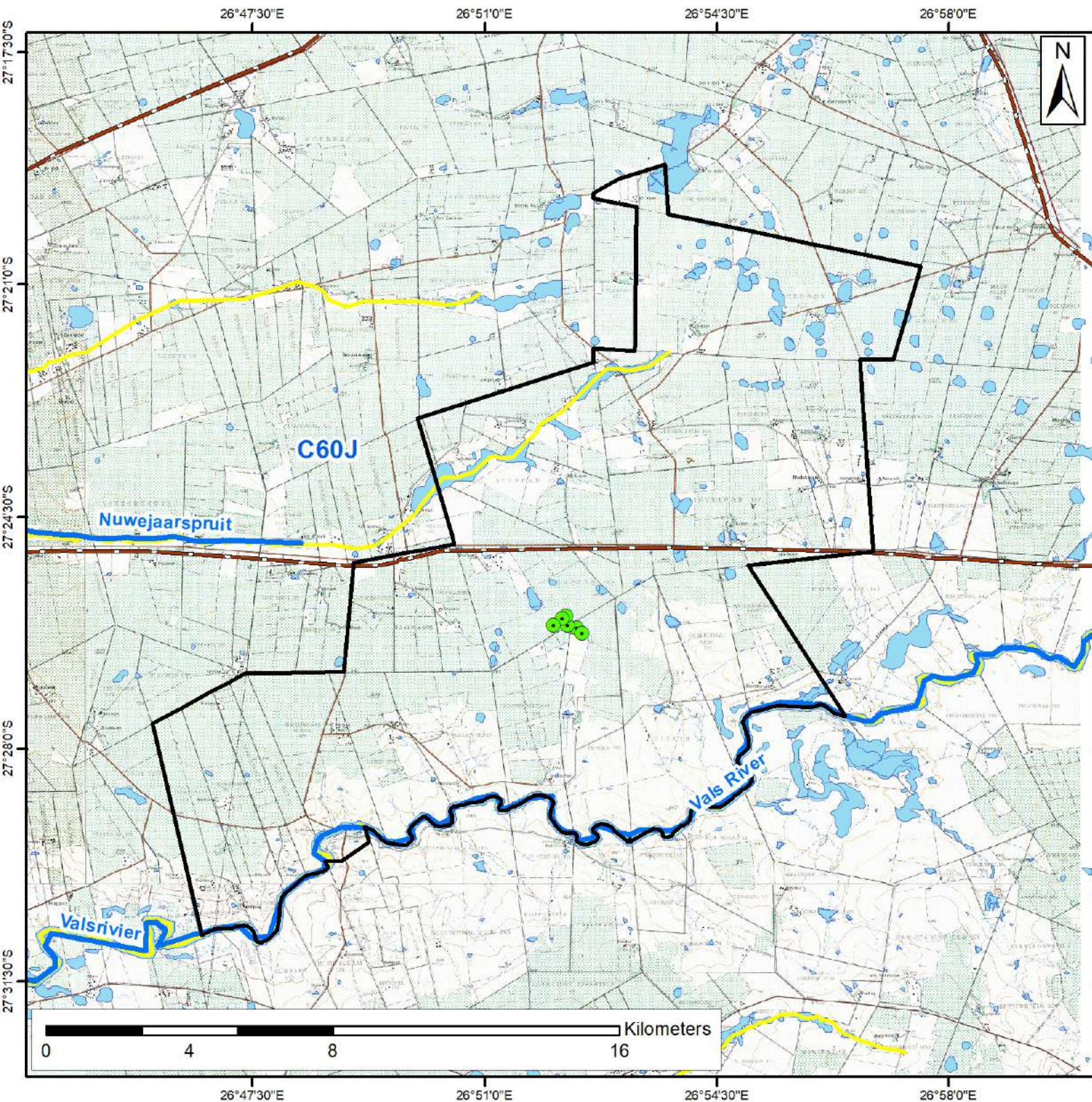
Datum: WGS 1984

Units: Degrees

Prepared by:



Intermap, increment P Corp., GEBCO, USGS, IGN, Kadaster NL, Ordnance Survey, Esri (Kong), (c) OpenStreetMap contributors, and the

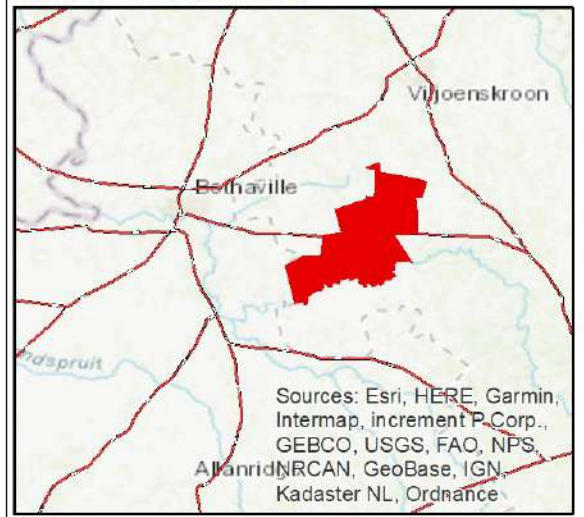


# Wetland Delineation

Bothaville Consolidated

- Roads
- Planned Drillholes
- Bothaville Consolidated
- NFEPA Rivers (PES1999)**
  - CLASS A: UNMODIFIED, NATURAL
  - CLASS B: LARGELY NATURAL
  - CLASS C: MODERATELY MODIFIED
  - CLASS D: LARGELY MODIFIED
  - CLASS E - F: NOT AN ACCEPTABLE
- NFEPA Wetlands

**Water Management Area:**  
Vaal (C60J Quaternary Catchment)



Sources: Esri, HERE, Garmin, Intermap, increment P.Corp., GEBCO, USGS, FAO, NPS, Aerial, NRCAN, GeoBase, IGN, Kadaster NL, Ordnance

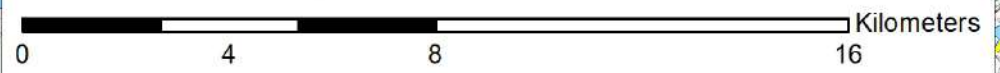
Coord System: WGS 1984

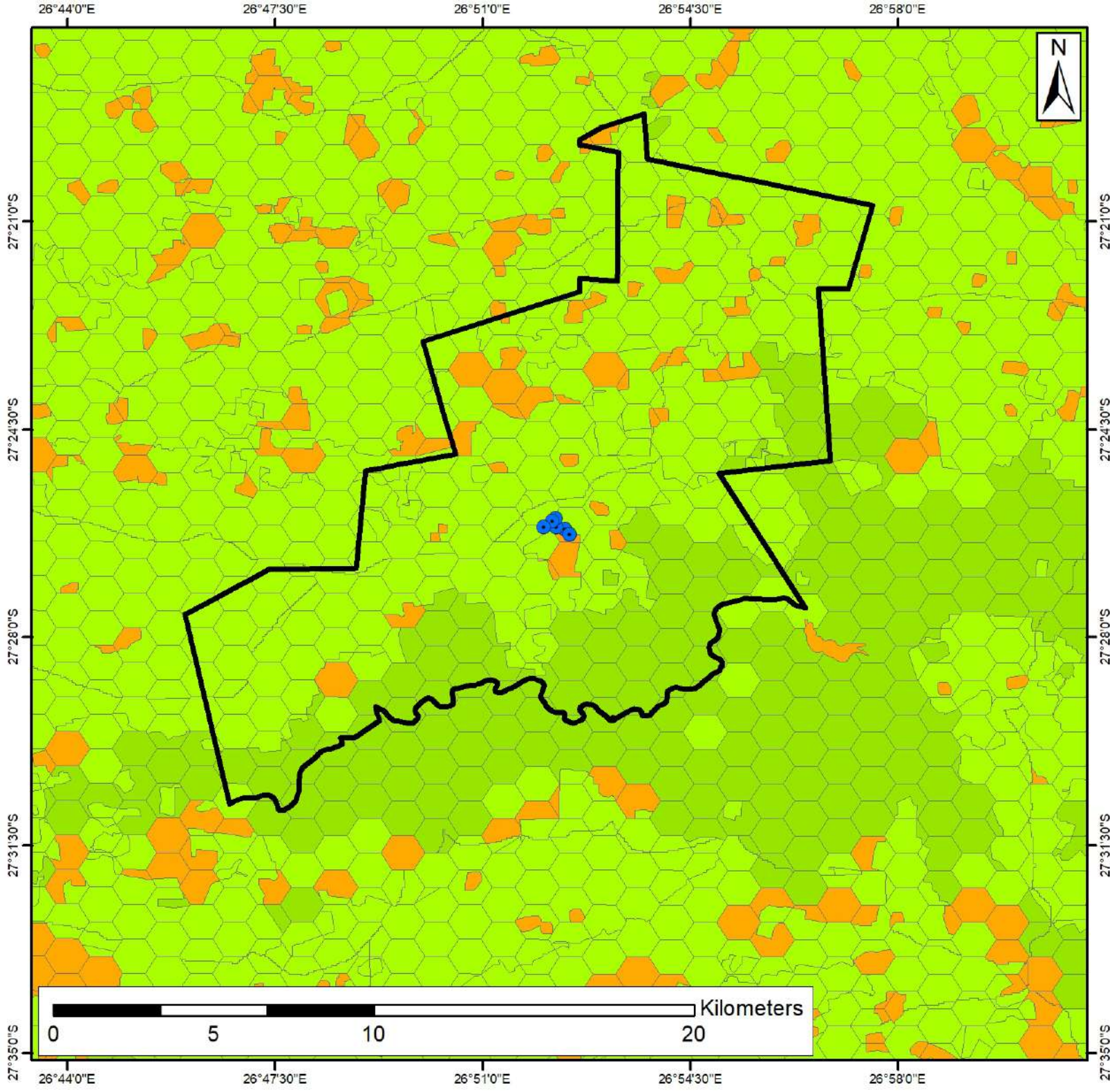
Datum: WGS 1984

Units: Degrees

Source: NFEPA Wetland Map

Prepared by:



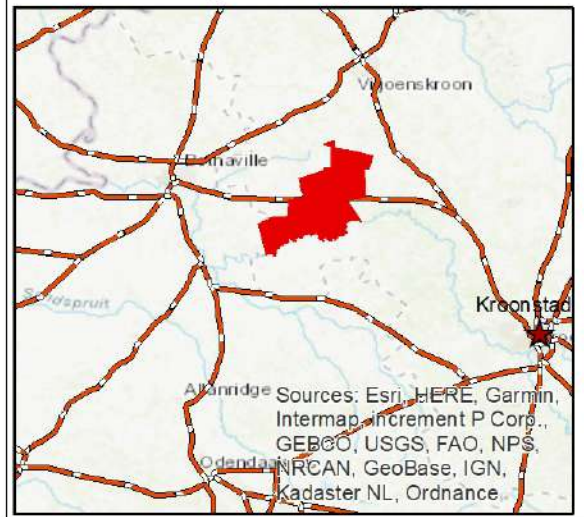


# Sensitivity Map

Bothaville Consolidated

- Planned Drillholes
- Bothaville Consolidated
- High
- Low

**Data Source:**  
South African National Biodiversity Institute  
(Free State)



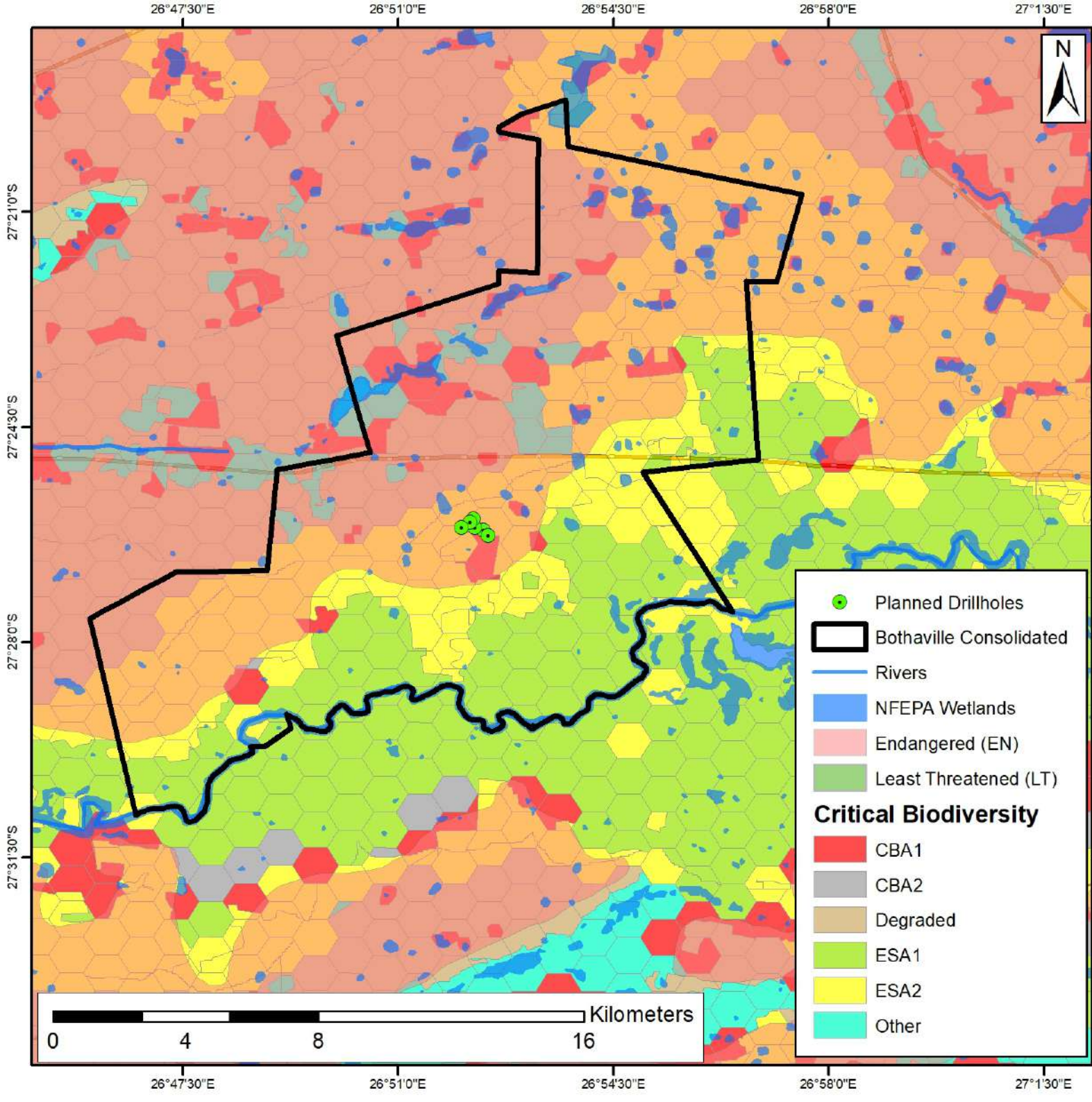
Coord System: GCS WGS 1984

Datum: WGS 1984

Units: Degrees

Prepared by:

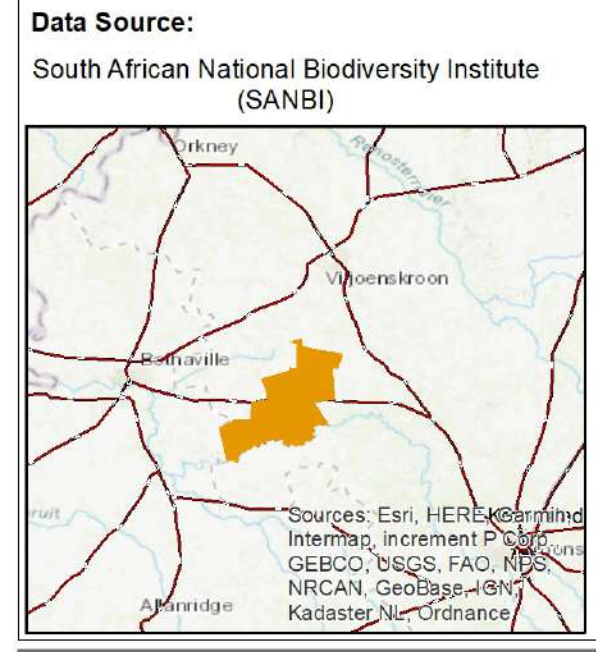




# Composite

## Bothaville Consolidated

**Data Source:**  
 South African National Biodiversity Institute (SANBI)



Coord System: GCS WGS 1984  
 Datum: WGS 1984  
 Units: Degrees

Prepared by:

**Shango Solutions**  
 Excellence and Innovation in the Resources Industry