

Prospecting Right Plan

Plan drafted in terms of Regulation 2(2) of the Mineral and Petroleum Resources Development Act, 2002 (Act 28 of 2002)

The Figures:
 A, B, C, D, E, F, G, H, Middle of River, J, K, L, M, N, P, Q, R, S, T, U, V, W, X, Y, Z, A1, B1, C1, D1, E1, F1, G1, H1, J1, K1, L1, M1, N1, P1, Q1, R1, S1, T1, Middle of River, U1, V1, W1, Middle of River, X1, Y1, Z1, Middle of River, A2, A

Represents:

- The Remainder of the Farm Moodiam 4
- The Farm Uitkomst 25
- Portion 2 and the Remainder of Erfenis 30
- The Remainder of Farm Vryheid 33
- Portion 1 and the Remainder of the Farm Zamenloop 35
- The Farm Kwagga Laagte 41
- Portion 5 and 6 of the Farm Mizpa 42
- The Farm Strydfontein 43
- A portion of Portion 1 and a portion of the Remainder of the Farm Jackalskraal 82
- The Farm Ennis 90
- Portion 1 and the Remainder the Farm Waaihoek 101
- The Farm Driekhoek 130
- The Farm Geschenk 137
- Portion 1 and the Remainder of the Farm Moedersdeel 158
- Portion 1 and the Remainder of the Farm Swaarverdiend 175
- Portion 1 and Remainder of the Farm Ruébens Deel 178
- The Farm Zwagers-hoek 186
- The Remainder of the Farm Schoongezicht 206
- The Farm Zoetvley 245
- Portion 1 and the Remainder of the Farm Schurwepoort Oost 255
- The Farm Doornrand 261
- The Farm Houtkraal 267
- Portion 1 and the Remainder of the Farm Erfedeel 264
- Portion 1 and the Remainder of the Farm Erfedeel 282
- The Farm Blesbok-Kraal 287
- Portion 1 and the Remainder of the Farm Houtkop 326
- The Farm Toekrygen 338
- The Remainder of Farm Meyerton 339
- The Remainder of the Farm Wolvekuil 396
- The Remainder of the Farm 397
- The Farm Zwartfontein 432
- Portion 1 and the Remainder of the Johannes Rust 434
- The Farm Tabor 460
- The Farm Wasgat 468
- The Farm Graspan 1531

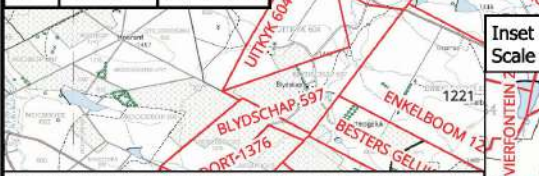
Located in the Magisterial District of Koppies Free State Province

- Portion 1 and Remainder of the Farm Stilleddal 53
- The Remainder of the Farm Klipkuil A 229
- The Farm Burmah 608
- The Farm Doornrand 1014
- The Remainder of the Farm Klipkuil B 1138
- The Farm Dankbaar 1444
- The Farm Fraaiuitzicht 1453
- The Farm Lusthof 1456
- The Farm Mooivley 1458
- The Farm Vlakpan 1914
- The Remainder of the Farm Brakspruit 2071
- The Remainder of the Farm Serpine 2141
- Portion 1 and the Remainder of the Farm Sterkwater 2334

Located in the Magisterial District of Kroonstad Free State Province

Total Extent of 18340.4536 Hectares .

Coordinate System WG27					
Point	Y	X	Point	Y	X
A	-61495.53	3025157.31	B1	-66625.20	3046847.27
B	-61685.88	3025795.78	C1	-66504.66	3047646.40
C	-61827.64	3025728.98	D1	-66410.93	3047570.53
D	-64277.55	3025164.08	E1	-63738.14	3049146.11
E	-65306.56	3024482.70	F1	-60217.64	3046830.54
F	-67137.55	3024208.46	G1	-59107.25	3045888.54
G	-67292.89	3024451.62	H1	-60853.76	3045342.84
H	-66476.94	3025043.11	J1	-60684.02	3045163.81
J	-68325.84	3026437.21	K1	-62338.09	3044258.05
K	-68148.40	3026620.36	L1	-62301.51	3044228.05
L	-68956.35	3028692.92	M1	-61763.96	3041945.08
M	-69303.14	3029517.10	N1	-62693.55	3041149.23
N	-69459.49	3030681.78	P1	-62442.75	3040676.36
P	-69821.37	3030744.08	Q1	-62695.44	3040228.71
Q	-69346.74	3033164.52	R1	-61897.96	3039283.23
R	-69373.59	3033906.84	S1	-60215.16	3037528.54
S	-69026.31	3035238.71	T1	-60651.25	3037190.72
T	-68016.85	3036225.97	U1	-59782.73	3036074.62
U	-68064.47	3039364.65	V1	-59712.84	3035952.72
V	-68080.69	3040408.98	W1	-60167.16	3035568.61
W	-66931.93	3041168.11	X1	-59871.28	3034631.05
X	-68093.79	3042214.16	Y1	-59519.98	3032755.36
Y	-66921.60	3043559.46	Z1	-58651.78	3032789.87
Z	-67514.78	3044186.04	A2	-57443.81	3029310.43
A1	-68259.26	3044189.29			



Compiled February 2024 using available Surveyor General Data and Information supplied by applicant.

Certified by N.T. Mlanduli
 Professional Land Surveyor

Signed: *[Signature]*
 PLS 1425

Date: 23/02/2024

Applicant: White Rivers Exploration (Pty) Ltd

Reg No: 2007/009523/07

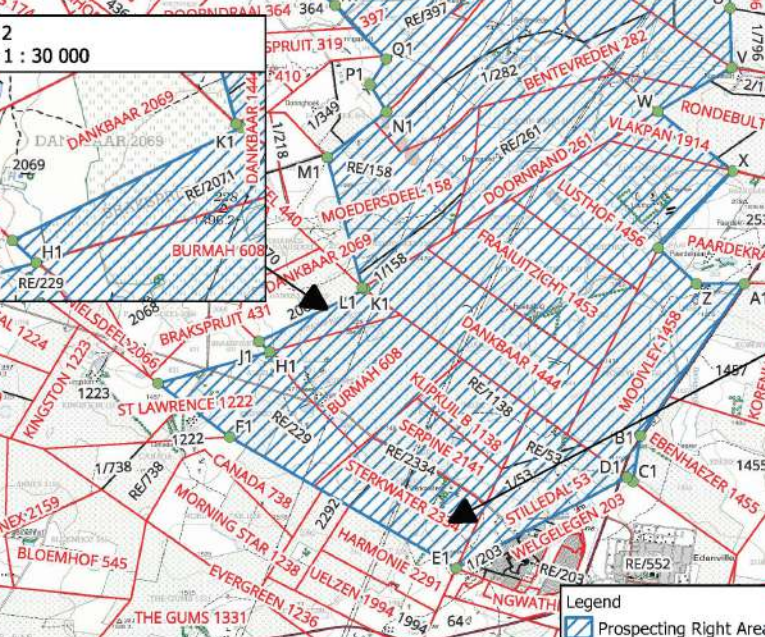
Signed: _____

Date: _____

Regional Manager
 Department of Minerals and Energy
 Free State Province

Signed: _____

Date: _____



27°32'24"E

27°36'0"E

27°39'36"E

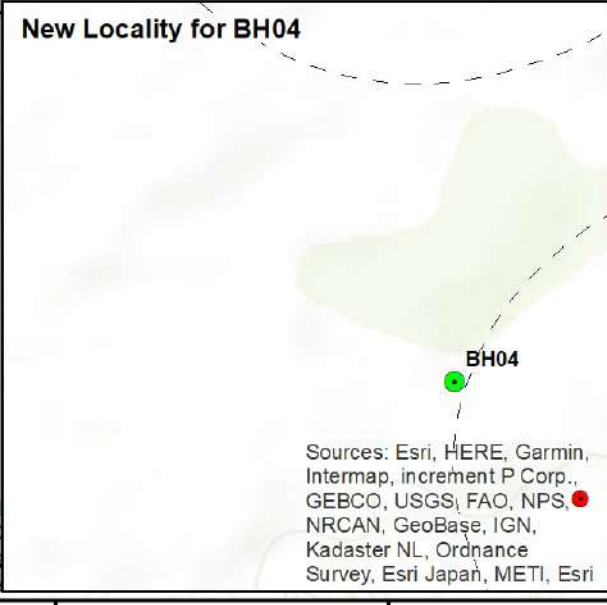
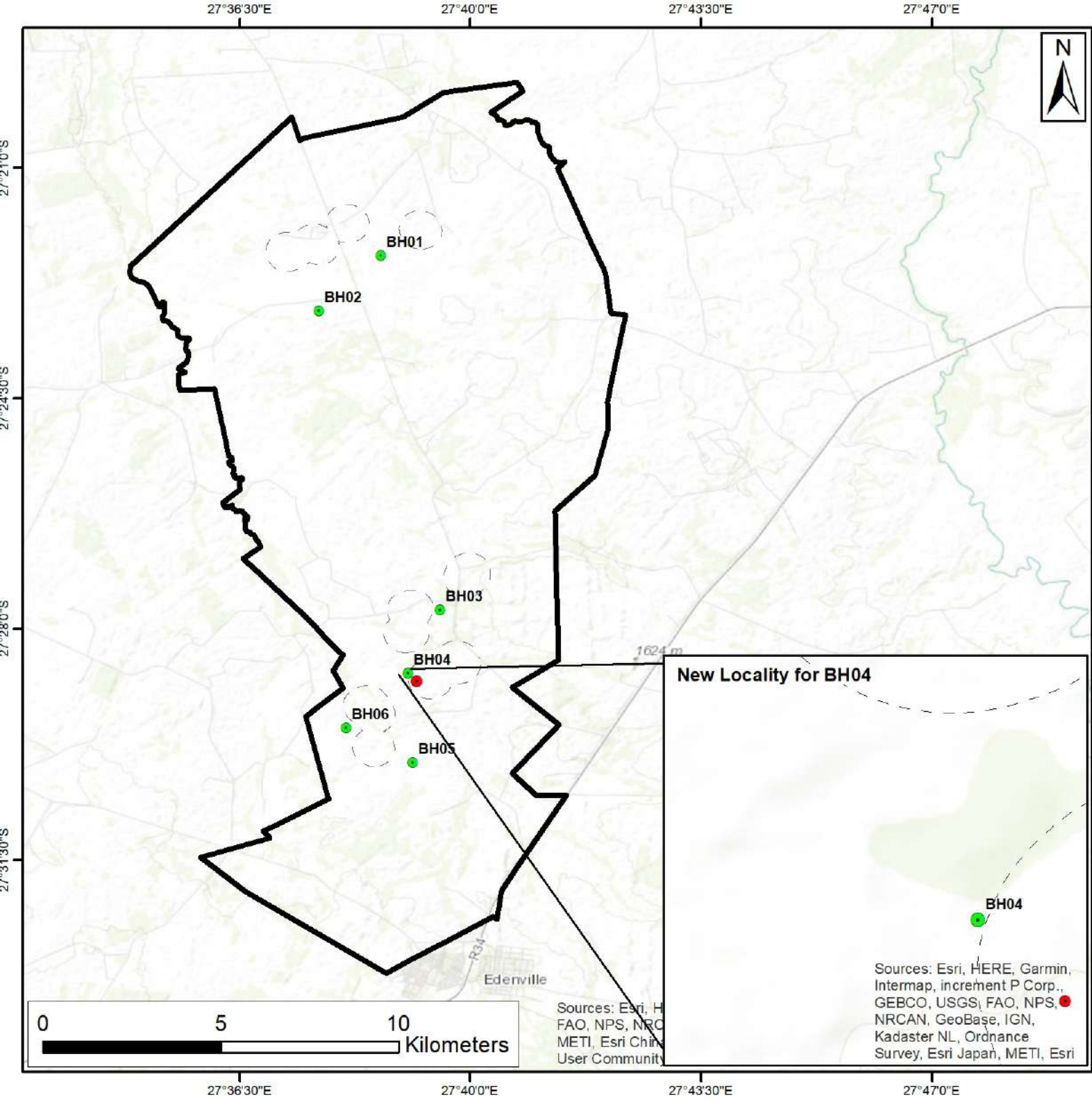
27°43'12"E

27°21'36"S

27°25'12"S

27°28'48"S

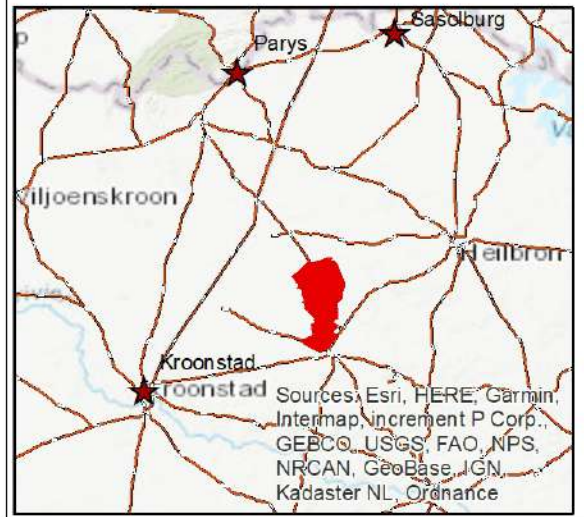
27°32'24"S



Locality

New Kroonstad North

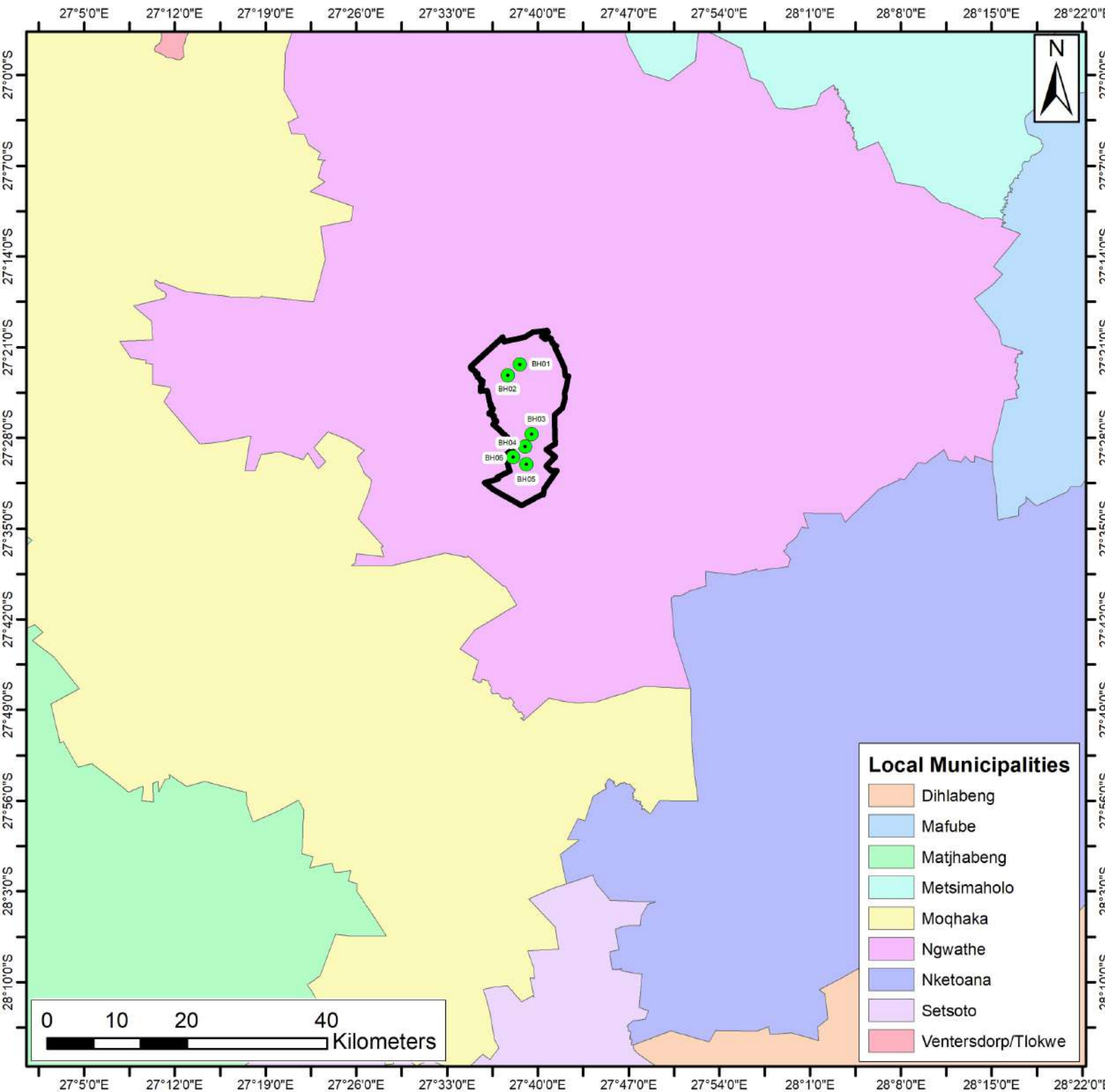
- Previous Planned drillhole
- Planned drillholes
- 500m Wetland Buffer
- New Kroonstad North



Coord System: GCS WGS 1984
 Datum: WGS 1984
 Units: Degrees

Prepared by:

Shango Solutions
 Excellence and Innovation in the Resources Industry

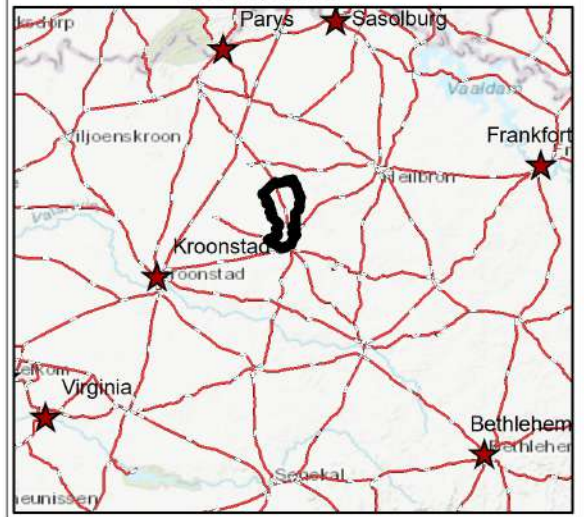


Local Municipality

New Koonstad North

- Planned Boreholes
- New Koonstad North

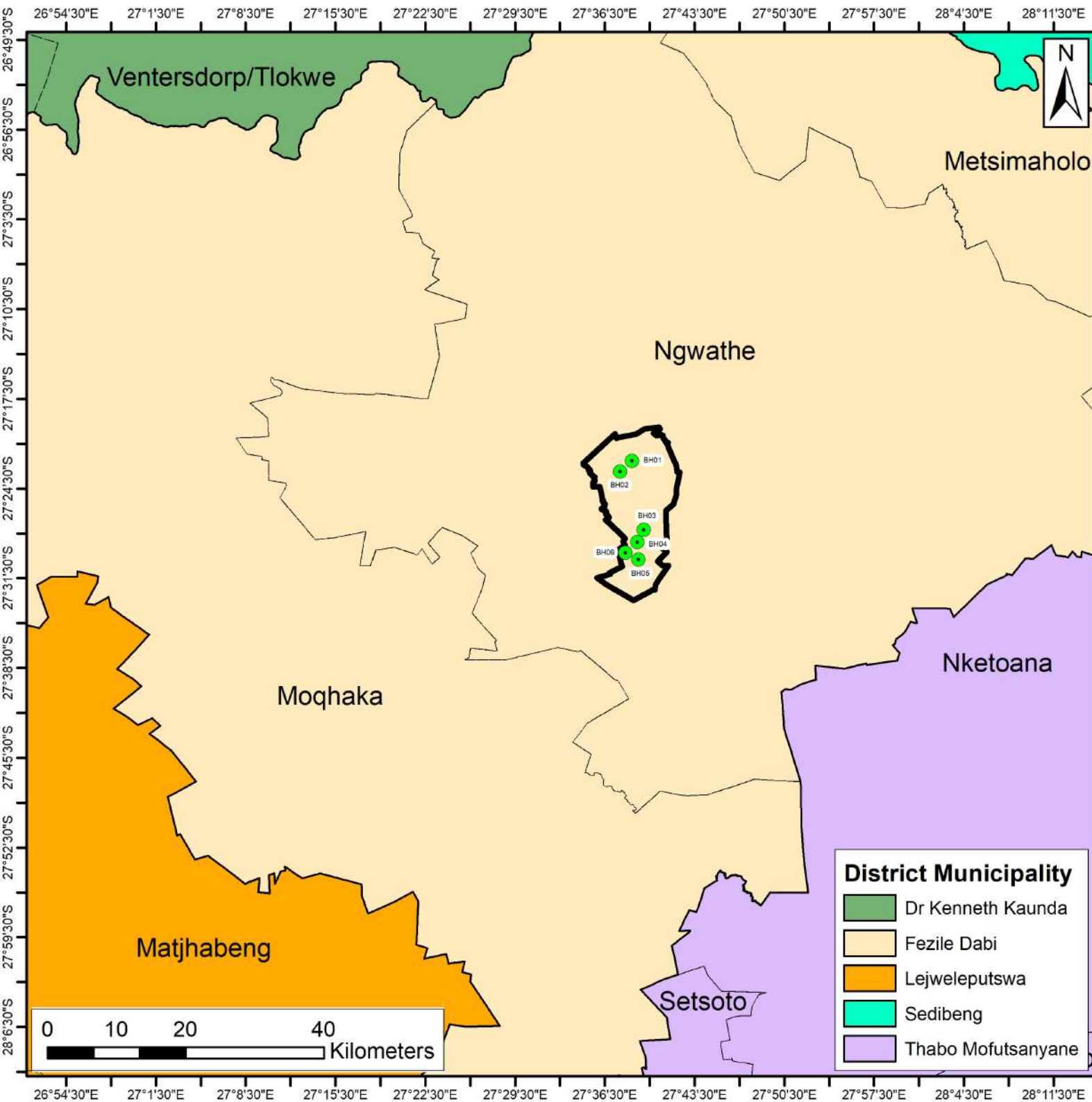
Source:
Chief Surveyor General: Free State Local Municipalities



Coord System: GCS WGS 1984
Datum: WGS 1984
Units: Degrees

Prepared by:

Shango Solutions
Excellence and Innovation in the Resources Industry

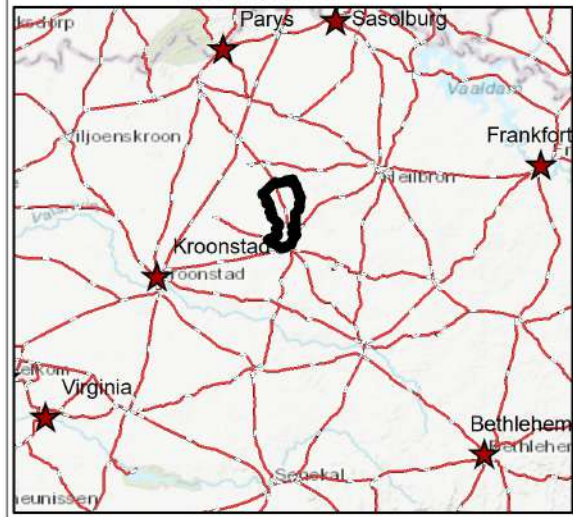


Local Municipality

New Koonstad North

- Planned Boreholes
- Local Municipalities
- New Koonstad North

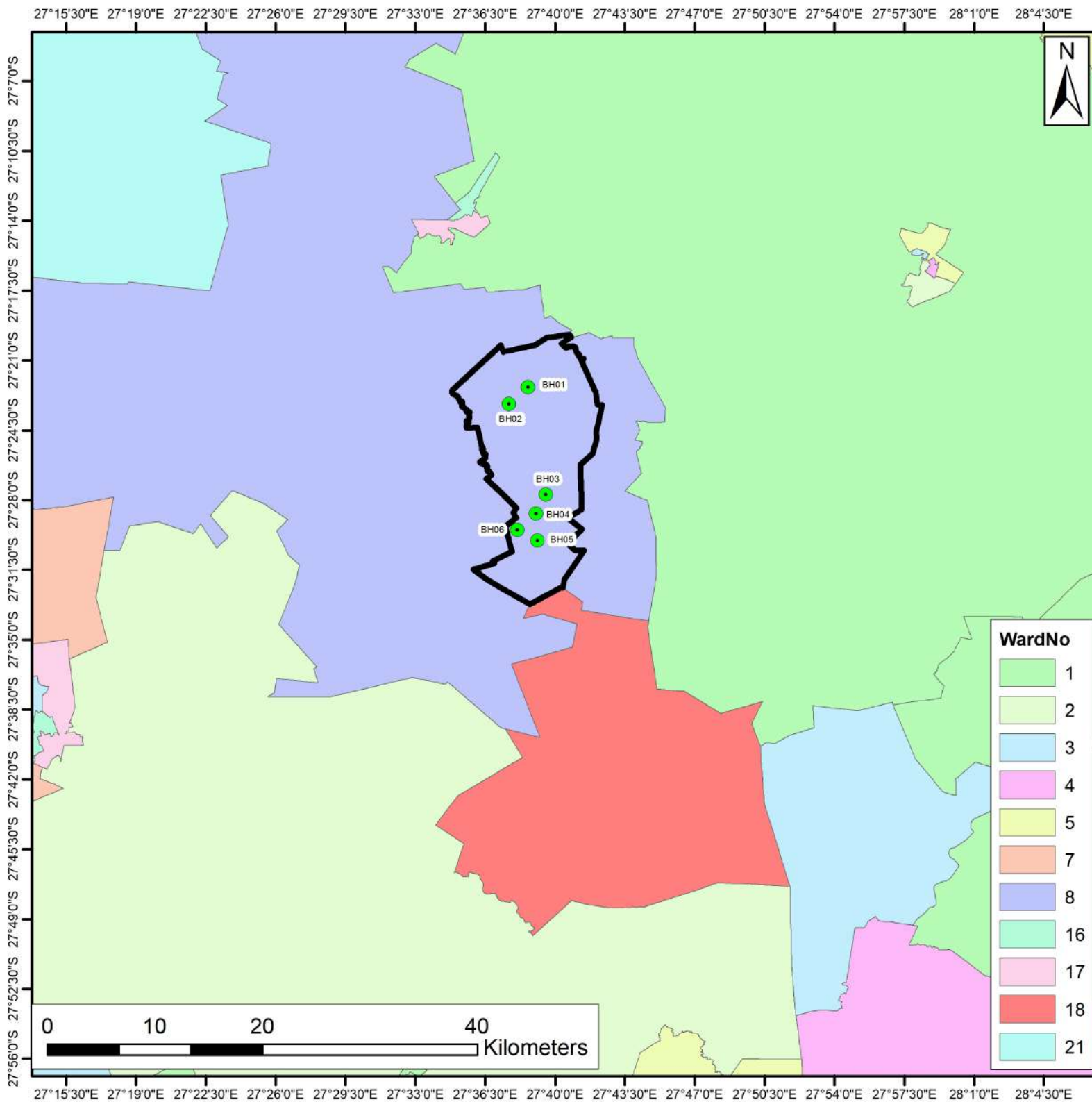
Source:
Chief Surveyor General: Free State Local Municipalities



Coord System: GCS WGS 1984
Datum: WGS 1984
Units: Degrees

Prepared by:

Shango Solutions
Excellence and Innovation in the Resources Industry

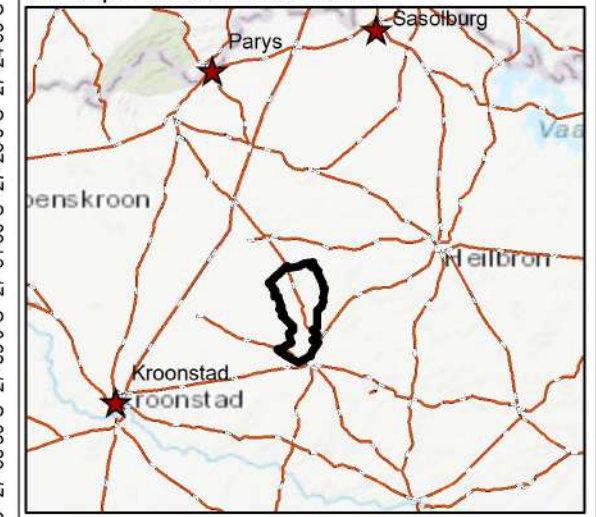


Ward Demarcation

New Kroonstad North

- Planned Boreholes
- New Kroonstad North

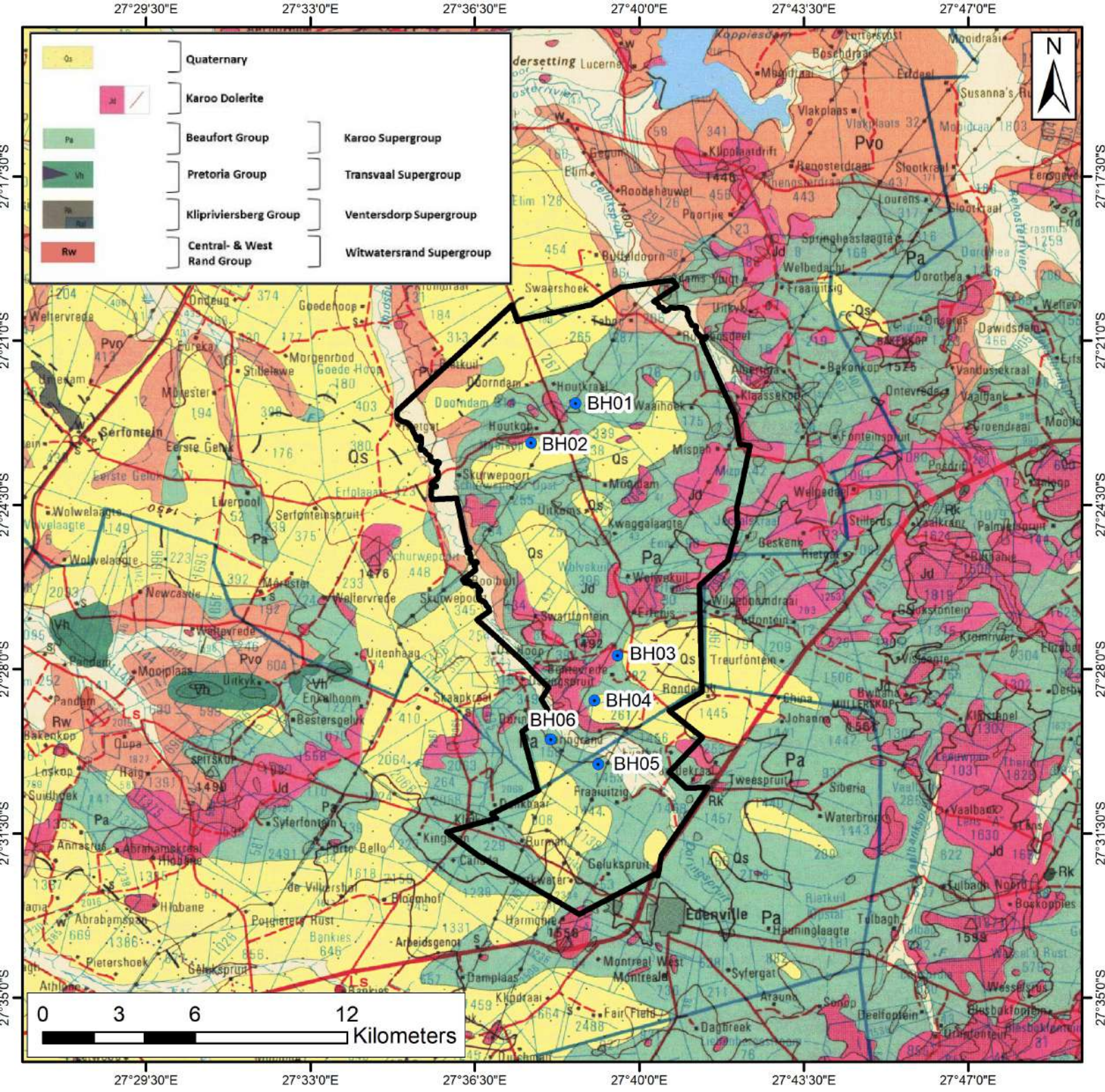
Data Source:
Municipal Demarcation Board



Coord System: GCS WGS 1984
Datum: WGS 1984
Units: Degrees

Prepared by:

WardNo	Color
1	Light Green
2	Light Yellow-Green
3	Light Blue
4	Pink
5	Yellow
7	Orange
8	Light Purple
16	Light Green
17	Pink
18	Red
21	Cyan

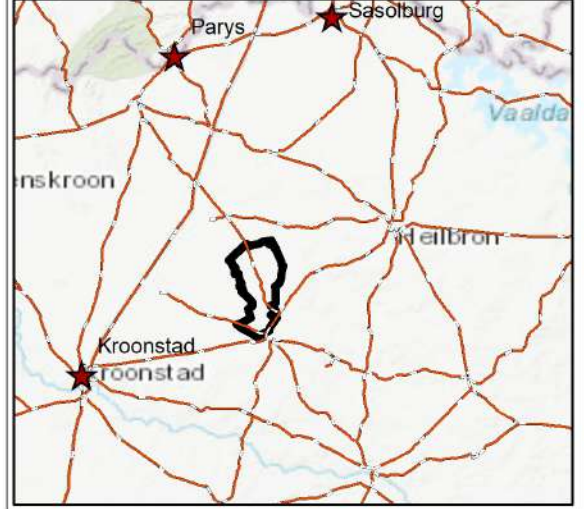


Geology

New Koonstad North

- Planned Boreholes
- New Koonstad North

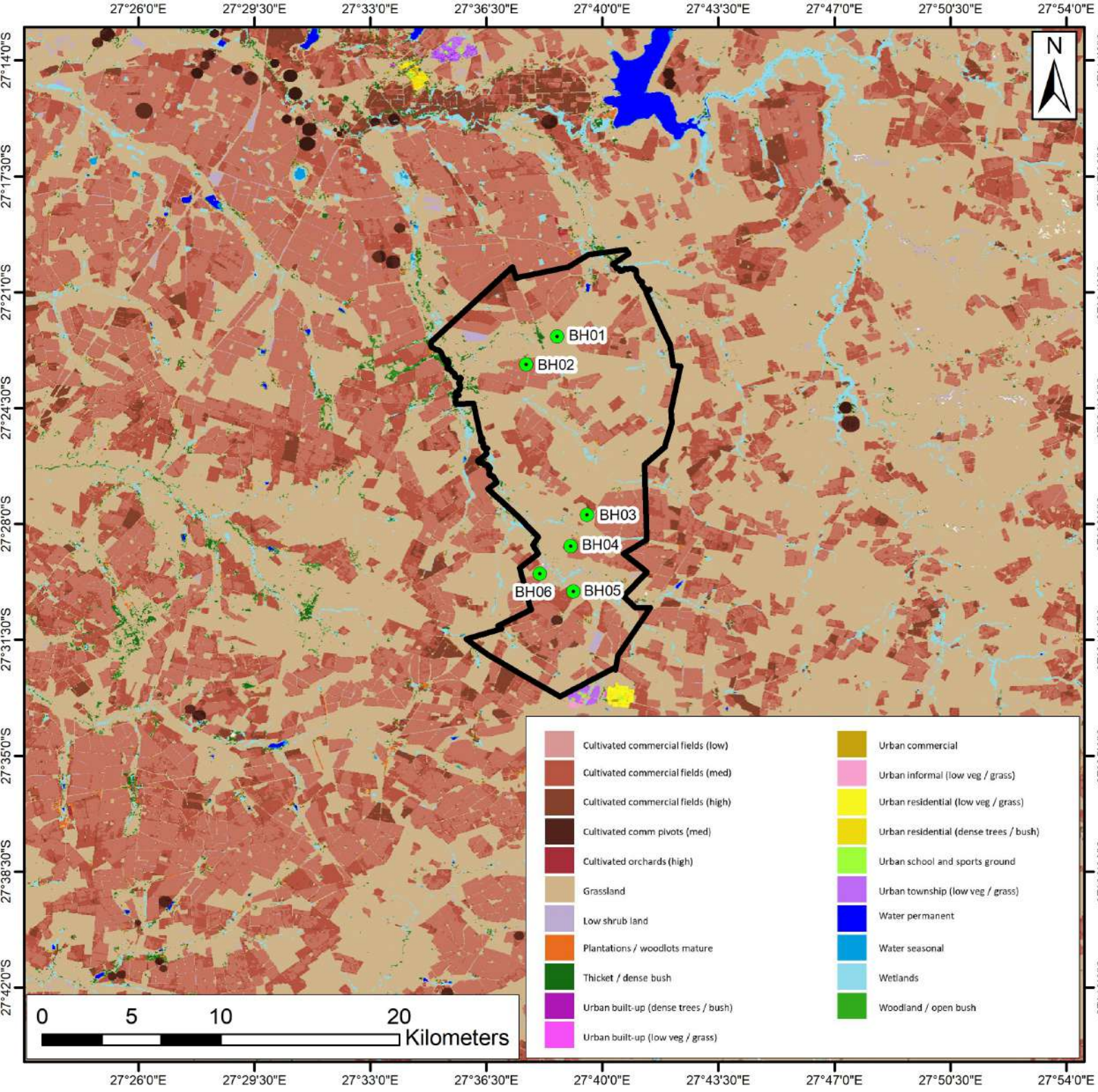
Source:
Department of Environmental Affairs



Coord System: GCS WGS 1984
Datum: WGS 1984
Units: Degrees

Prepared by:

Shango Solutions
Excellence and Innovation in the Resources Industry

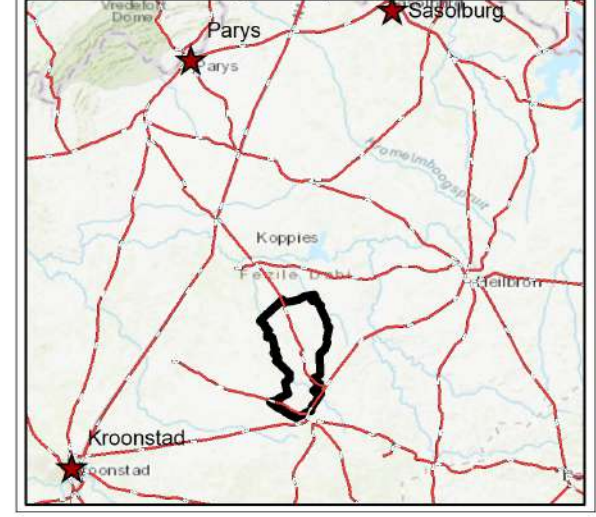


Land Use Cover

New Kroonstad North

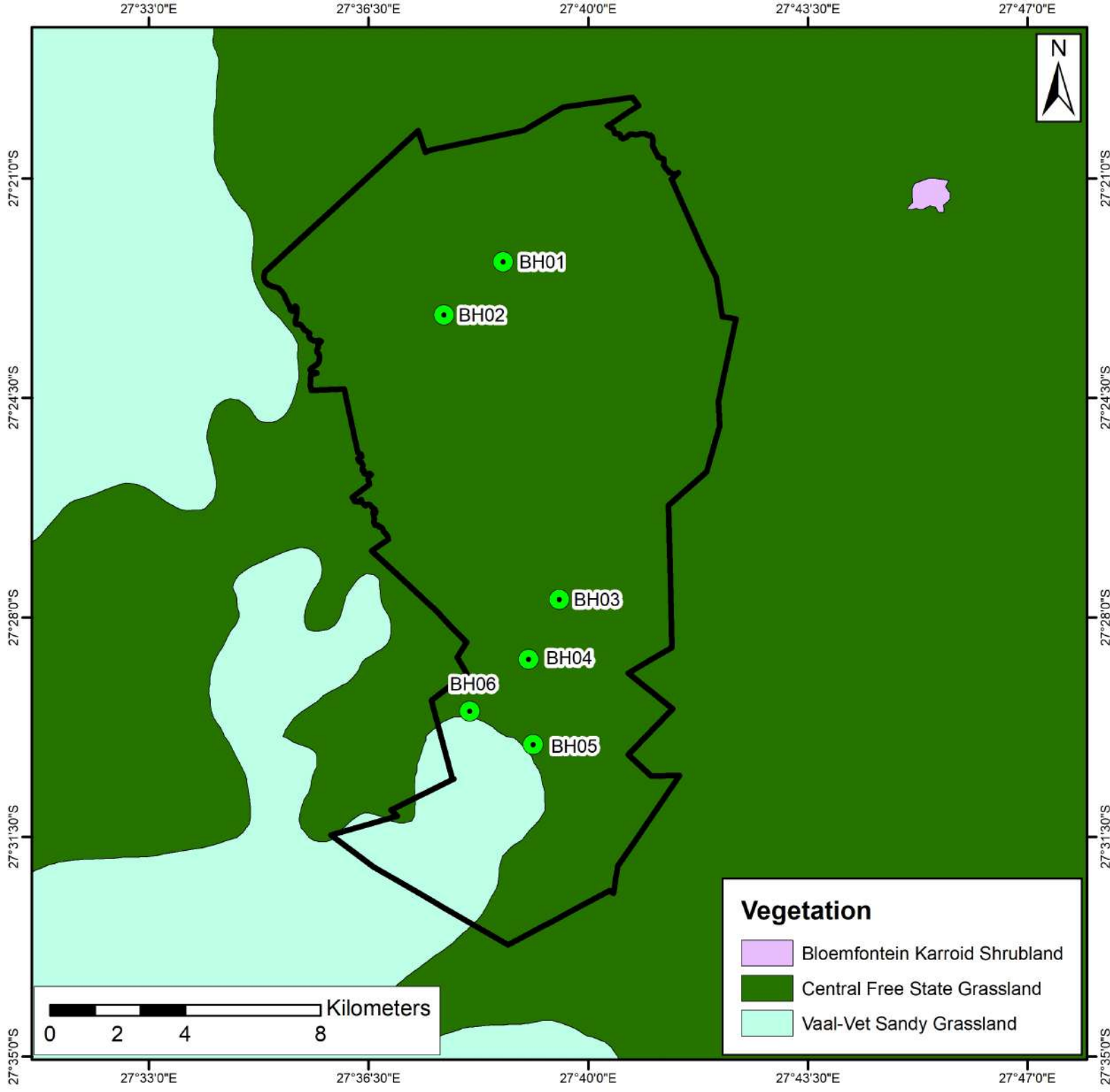
- Planned Boreholes
- New Kroonstad North

Source:
South African National Biodiversity Institute (SANBI)



Coord System: GCS WGS 1984
Datum: WGS 1984
Units: Degrees

Prepared by:

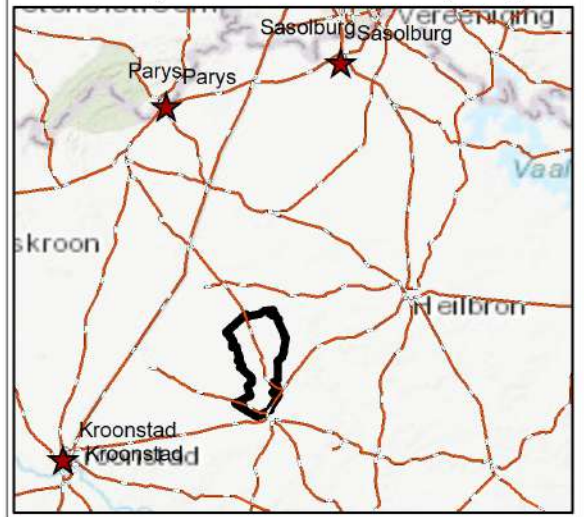


Vegetation

New Kroonstad North

- Planned Boreholes
- New Kroonstad North

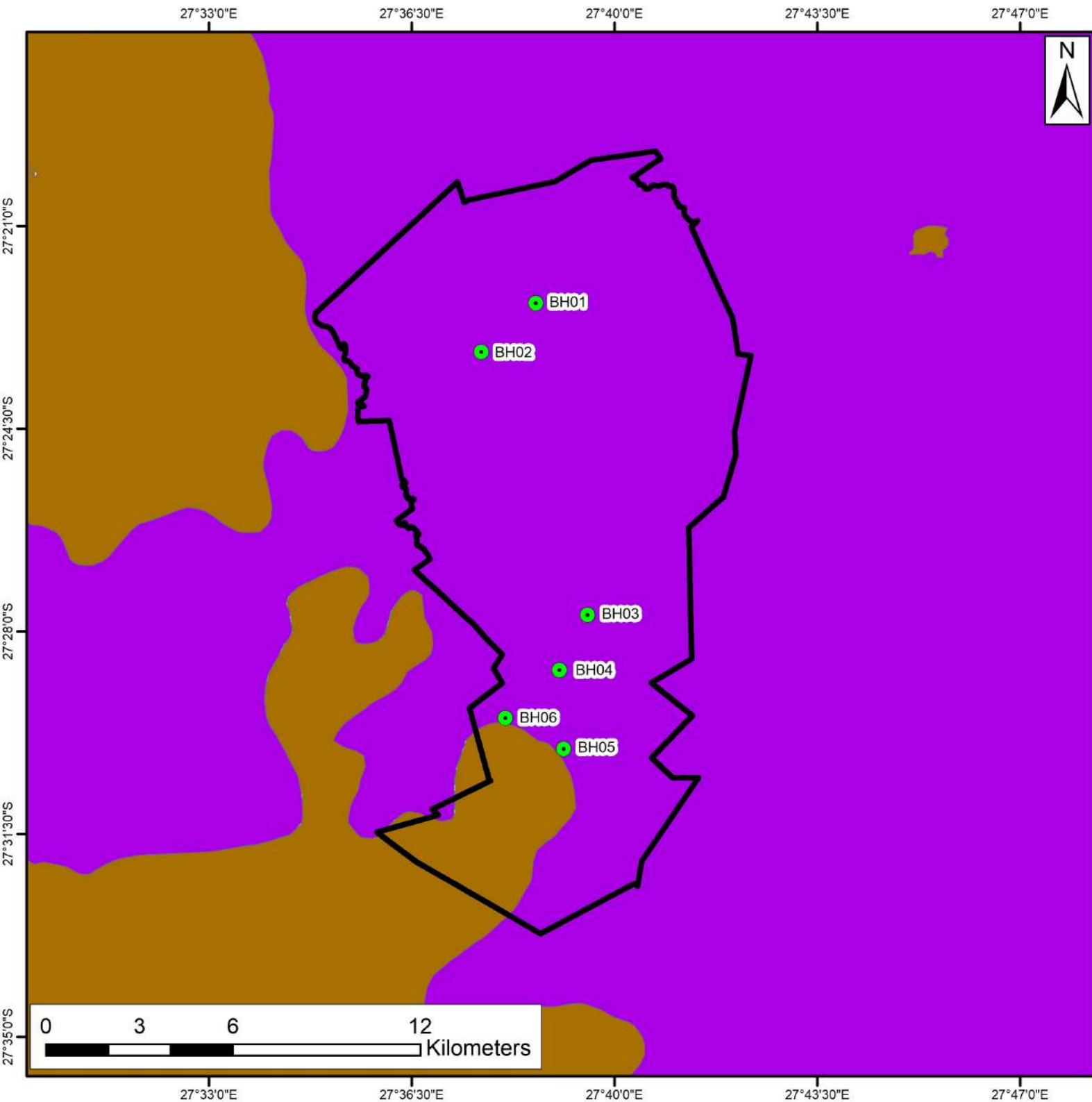
Data Source:
 The vegetation of South Africa, Lesotho and Swaziland (Mucina and Rutherford (2006))



Coord System: GCS WGS 1984
 Datum: WGS 1984
 Units: Degrees

Prepared by:

Shango Solutions
 Excellence and Innovation in the Resources Industry

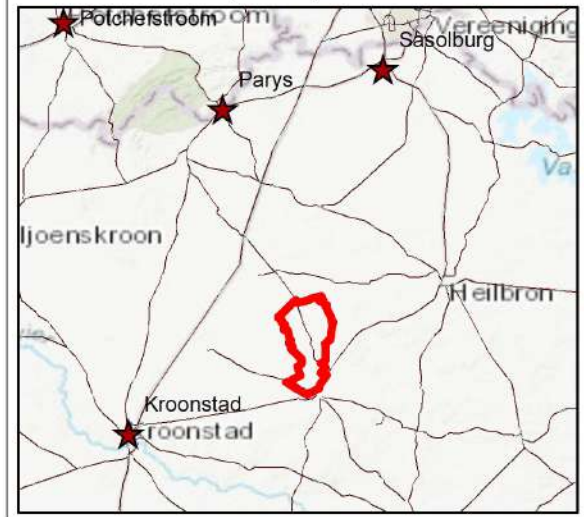


Ecosystem Threat Status

New Koonstad North

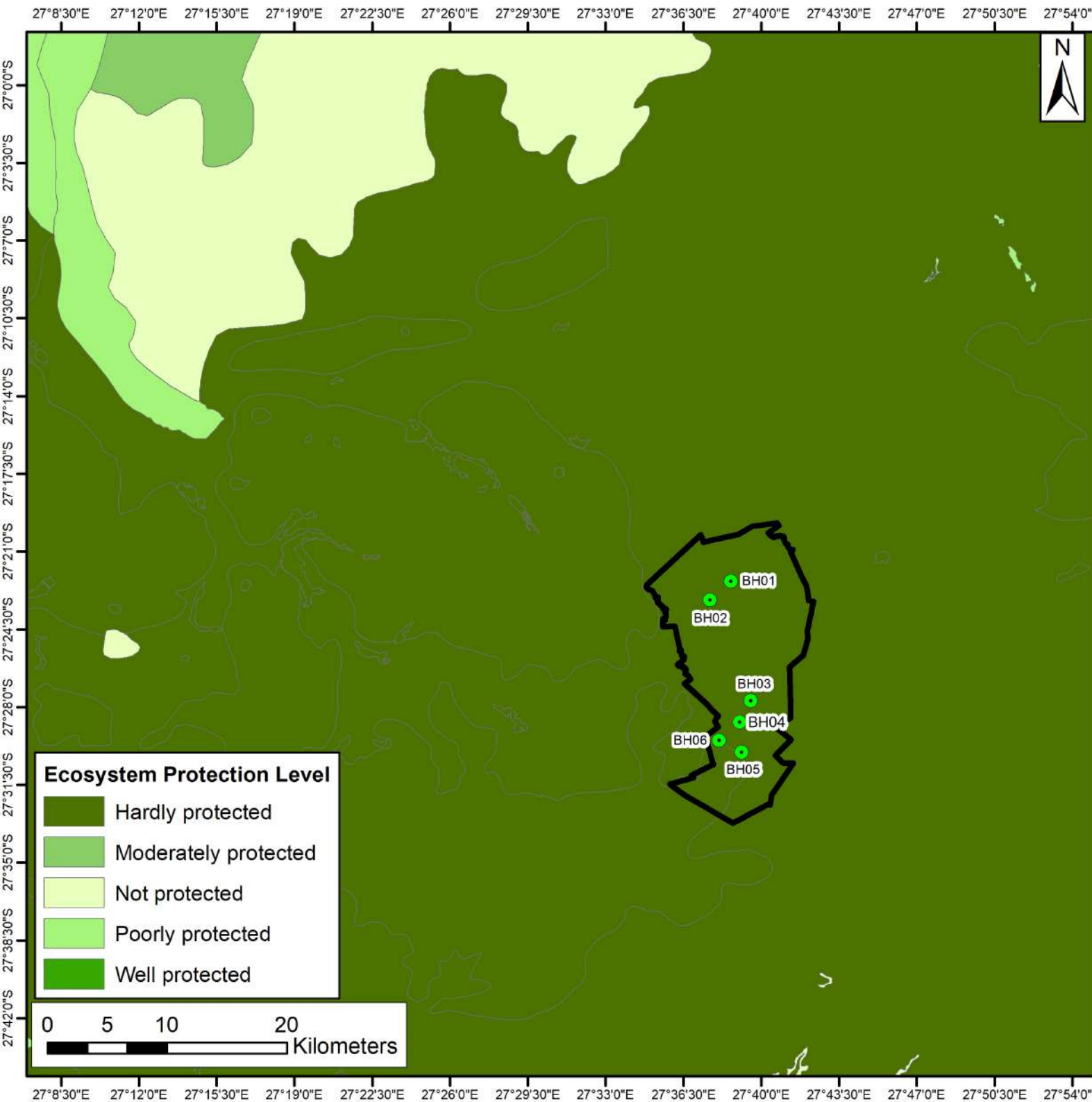
- Planned Boreholes
 - New Koonstad North
- ### Ecosystem Threat Status
- Vulnerable (VU)
 - Least Threatened (LT)

Source:
South African National Biodiversity Institute (SANBI)



Coord System: GCS WGS 1984
Datum: WGS 1984
Units: Degrees

Prepared by:

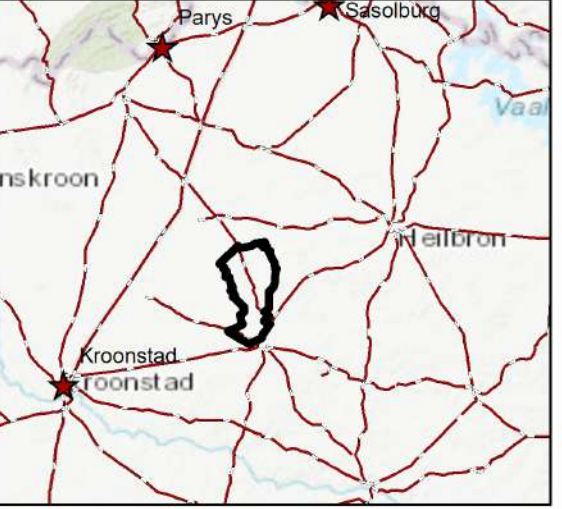


Terrestrial Ecosystem

New Koonstad North

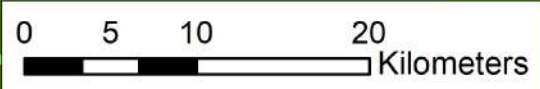
- Planned Boreholes
- New Koonstad North

Source:
Terrestrial Ecosystem Protection Level
NBA 2011



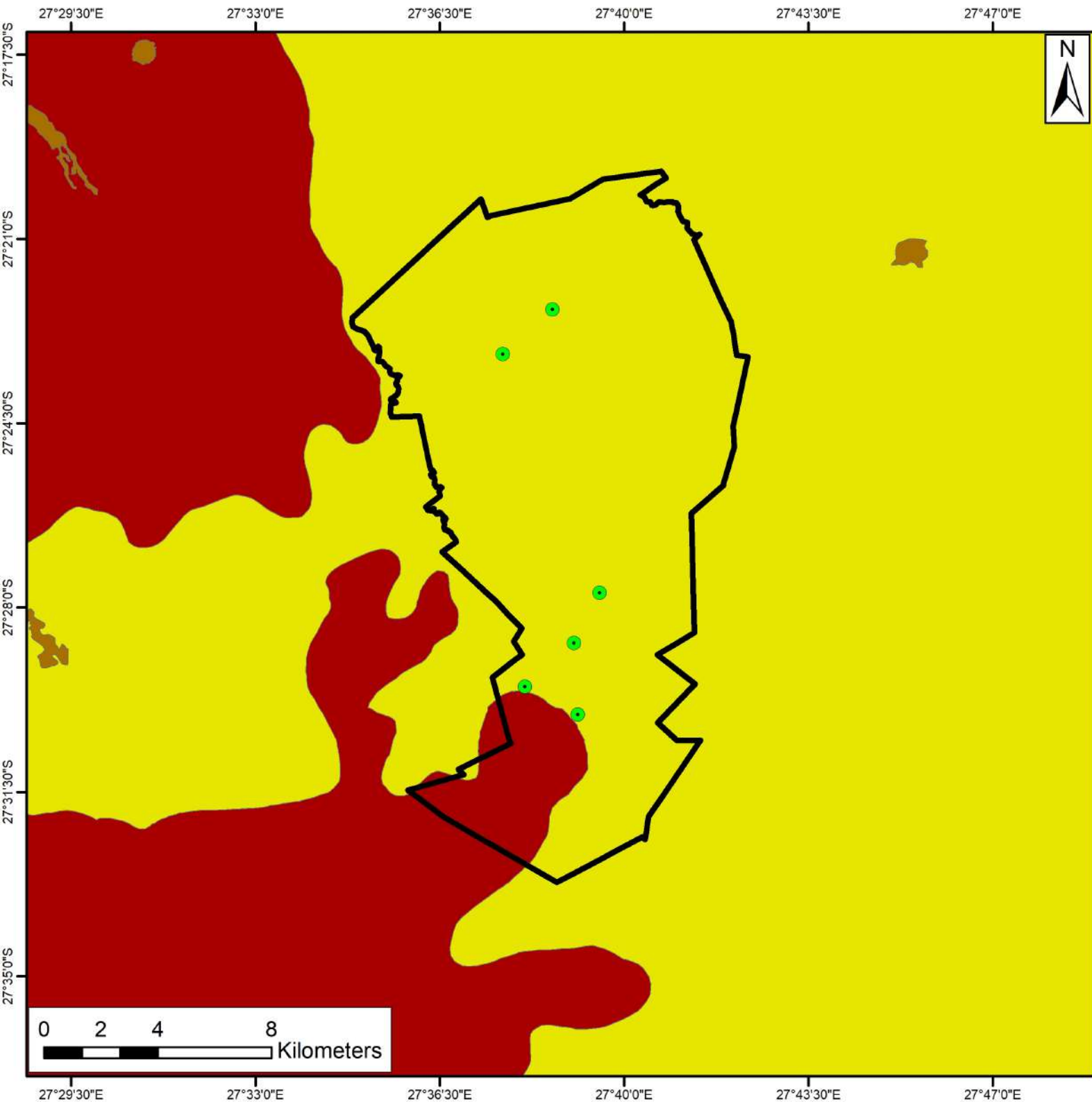
Ecosystem Protection Level

- Hardly protected
- Moderately protected
- Not protected
- Poorly protected
- Well protected



Coord System: GCS WGS 1984
Datum: WGS 1984
Units: Degrees

Prepared by:

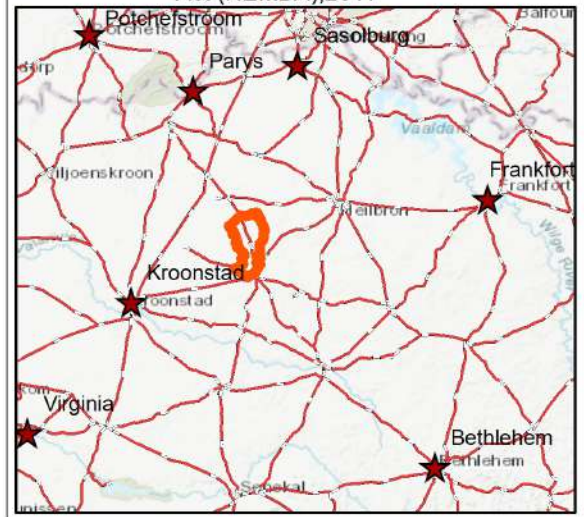


Conservation Status

New Kroonstad North

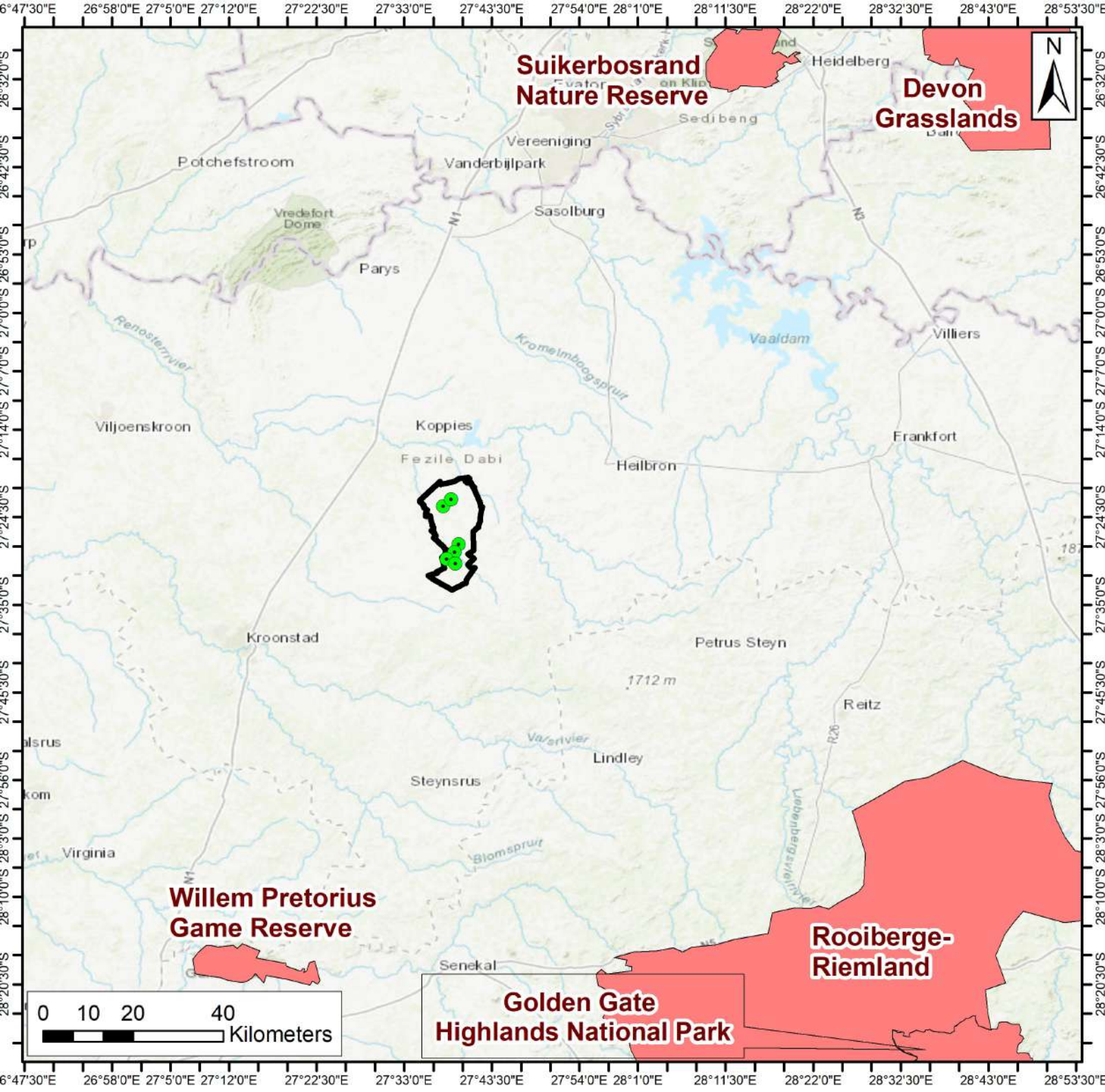
- Planned Boreholes
 - New Kroonstad North
- Conservation Status**
- Critically endangered
 - Endangered
 - Least threatened
 - Vulnerable

Source:
National Environmental Management Biodiversity Act (NEMBA), 2011



Coord System: GCS WGS 1984
Datum: WGS 1984
Units: Degrees

Prepared by:

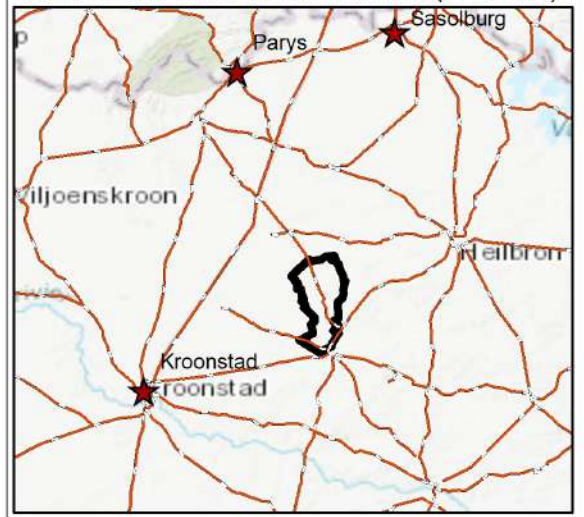


Important Bird Areas

New Koonstad North

- Planned Boreholes
- Important Bird Areas
- New Koonstad North

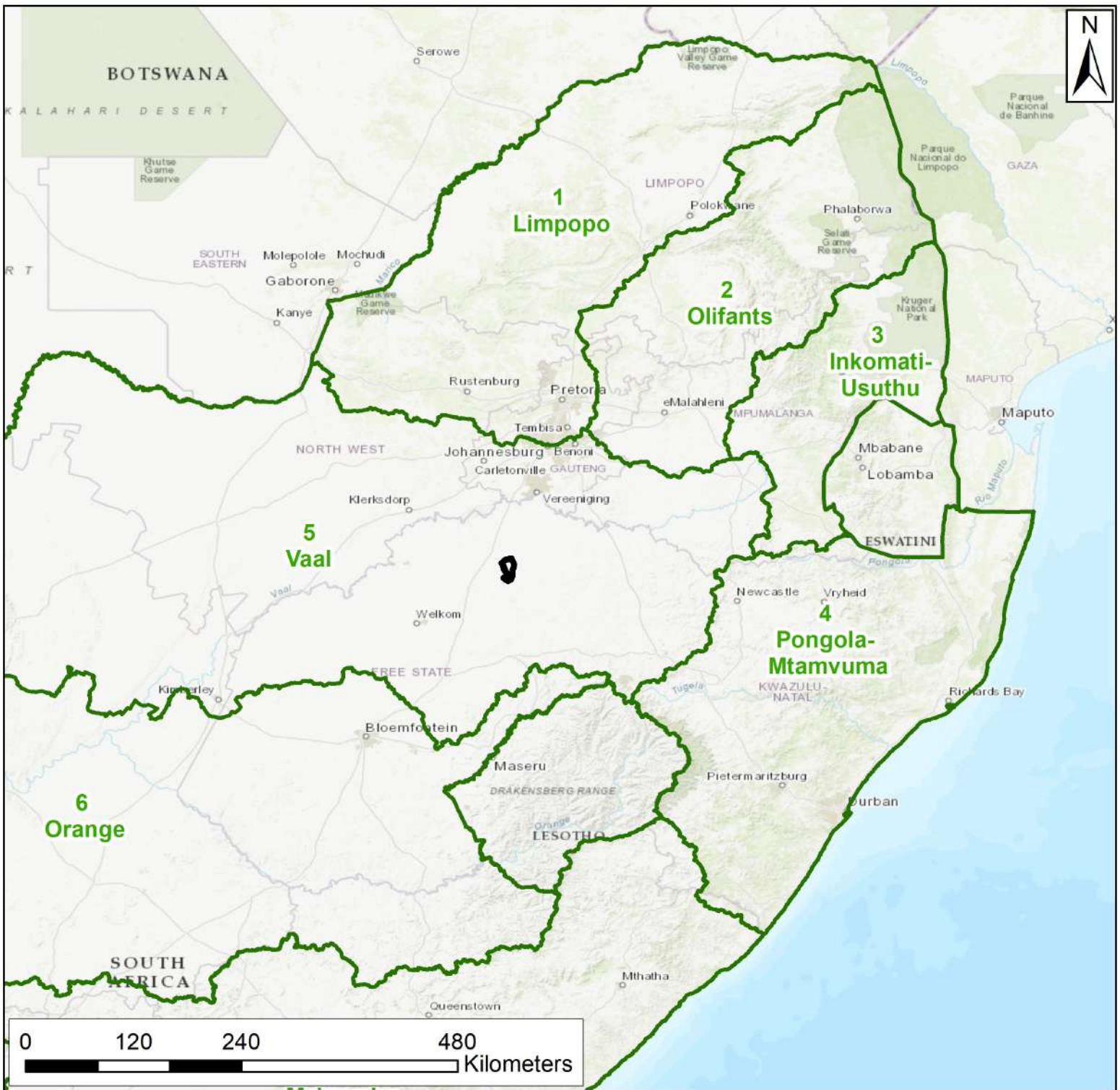
Source:
 Department of Economic,
 Small Business Development,
 Tourism and Environmental Affairs (DESTEA)



Coord System: GCS WGS 1984
 Datum: WGS 1984
 Units: Degrees

Prepared by:





Water Management Areas

New Koonstad North

- Water Management Areas
- New Koonstad North

Source:

Department of Water and Sanitation



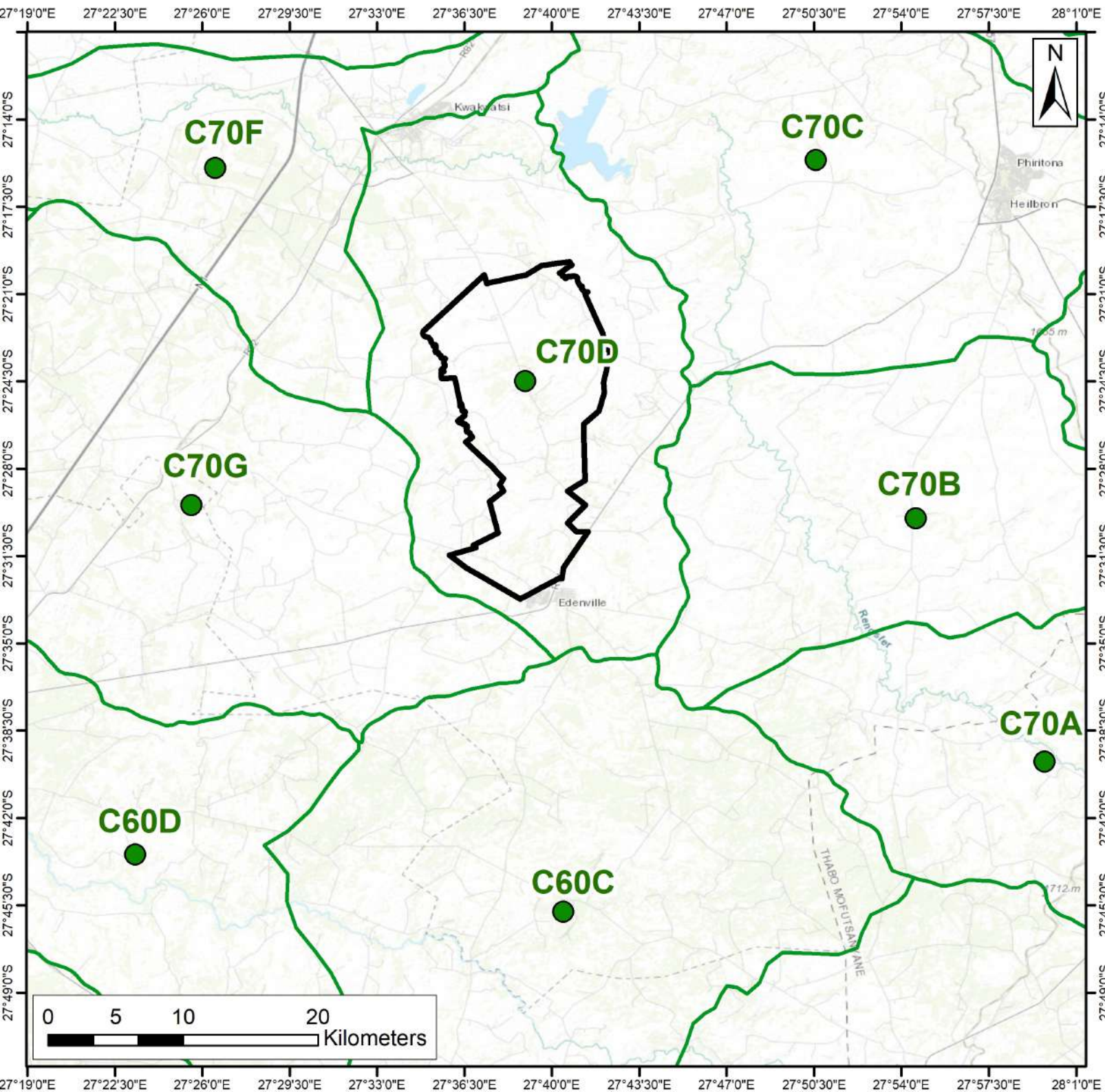
Coord System: GCS WGS 1984

Datum: WGS 1984

Units: Degrees

Prepared by:





Quaternary Catchments

New Koonstad North

- Quaternaries points
- Quaternaries Boundary
- New Koonstad North

Source:
Department of Water and Sanitation



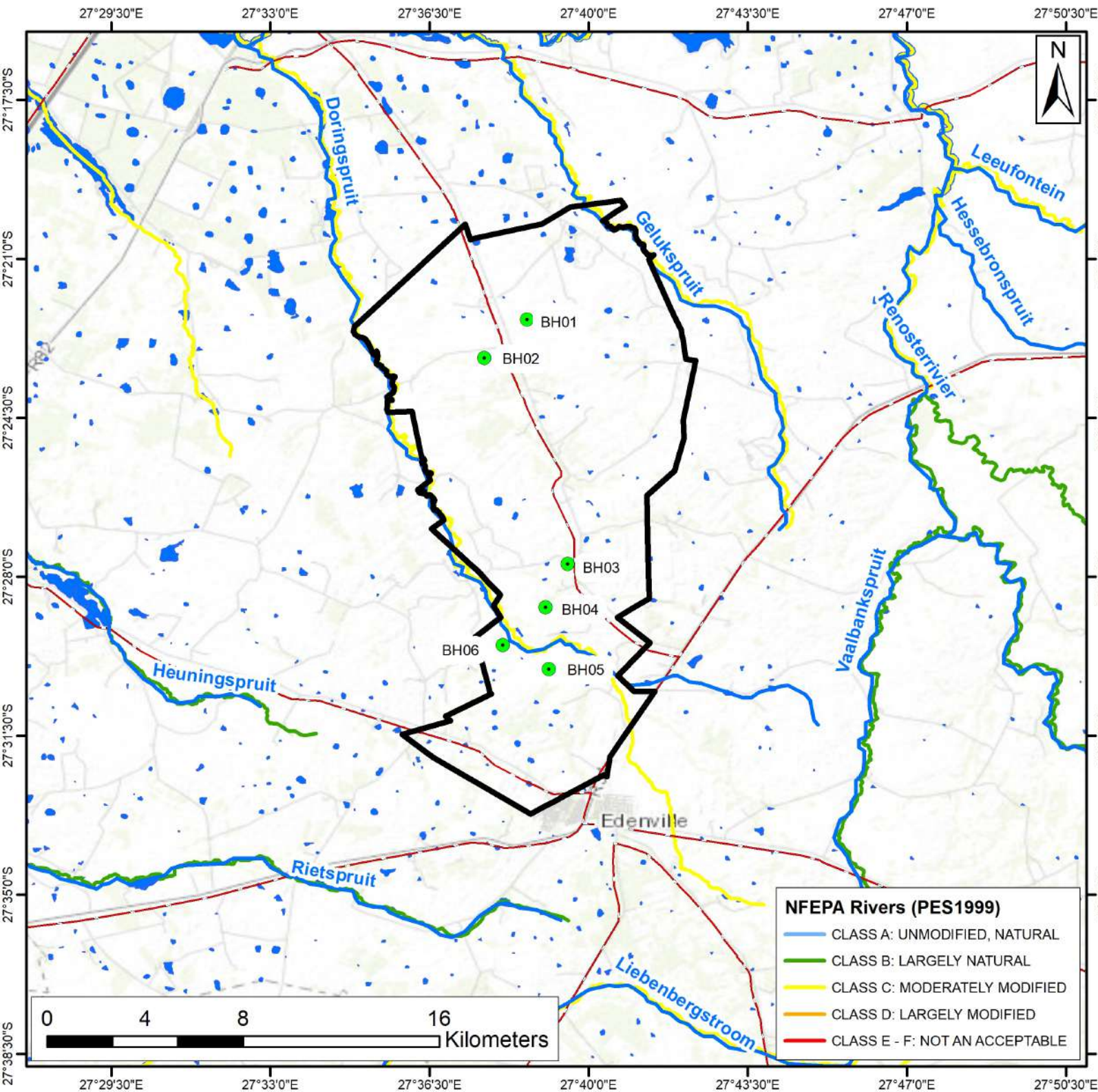
Coord System: GCS WGS 1984

Datum: WGS 1984

Units: Degrees

Prepared by:



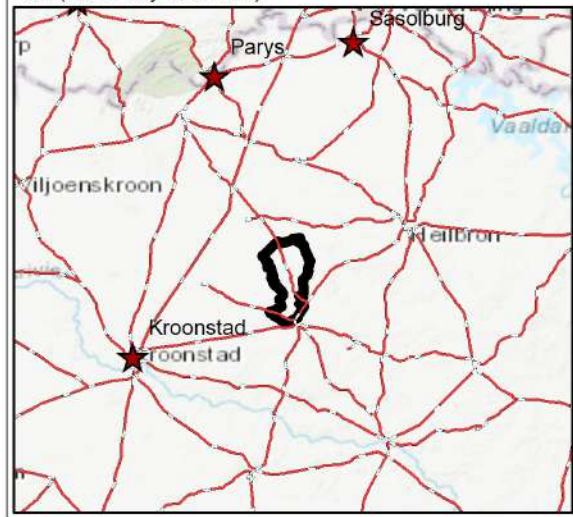


Surface Hydrology

New Koonstad North

- Planned Boreholes
- Roads
- Perennial Rivers
- NFEPA Wetlands
- New Koonstad North

Water Management Area: Vaal (Quaternary Catchment)



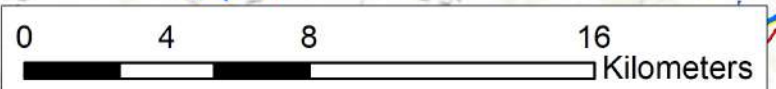
Coord System: GCS WGS 1984

Datum: WGS 1984

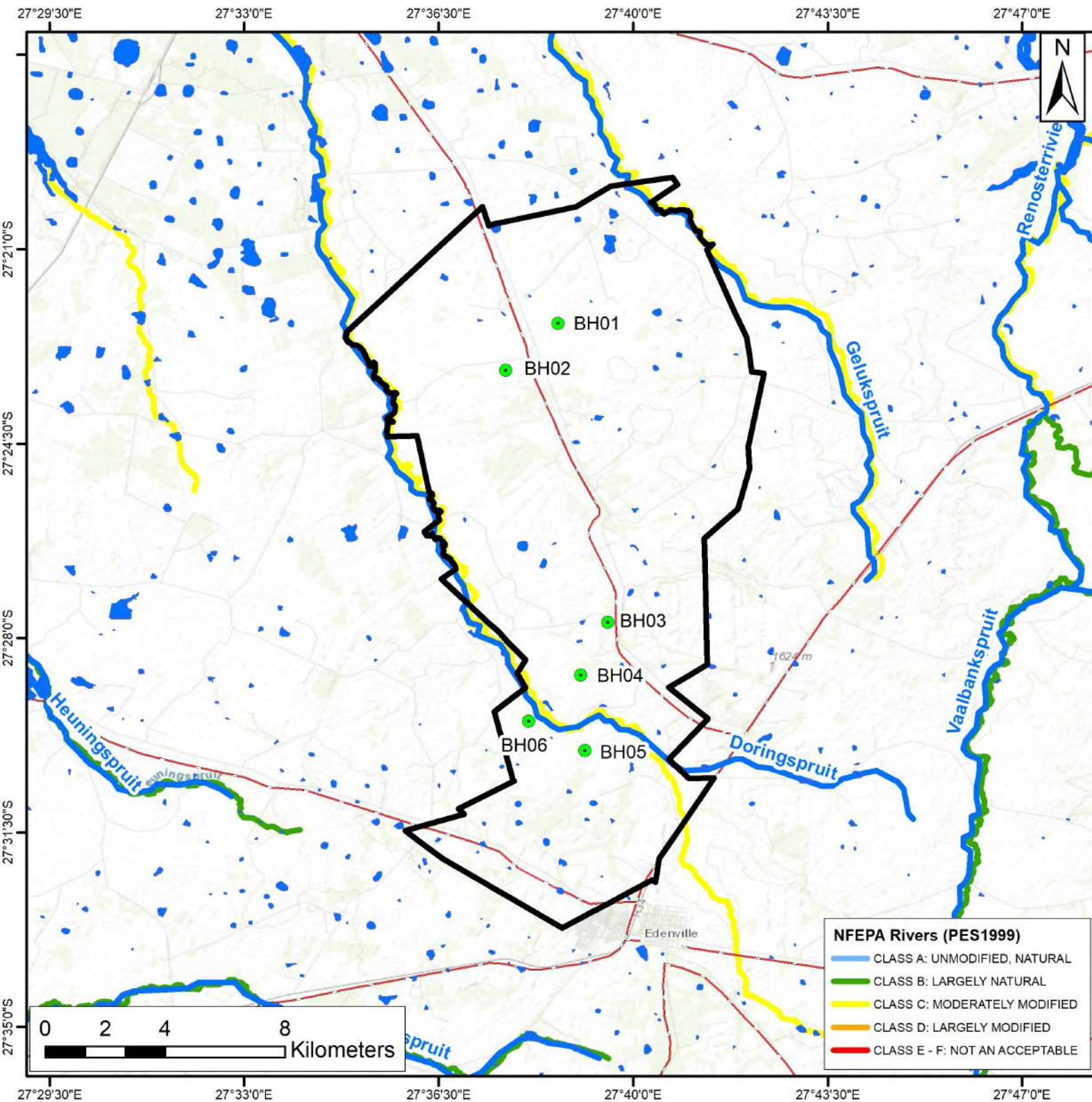
Units: Degrees

Source: NFEPA Wetland Map

- #### NFEPA Rivers (PES1999)
- CLASS A: UNMODIFIED, NATURAL
 - CLASS B: LARGELY NATURAL
 - CLASS C: MODERATELY MODIFIED
 - CLASS D: LARGELY MODIFIED
 - CLASS E - F: NOT AN ACCEPTABLE



Prepared by:



Wetland Delineation

New Koonstad North

- Planned Boreholes
- Roads
- Perennial Rivers
- NFEPA Wetlands
- New Koonstad North

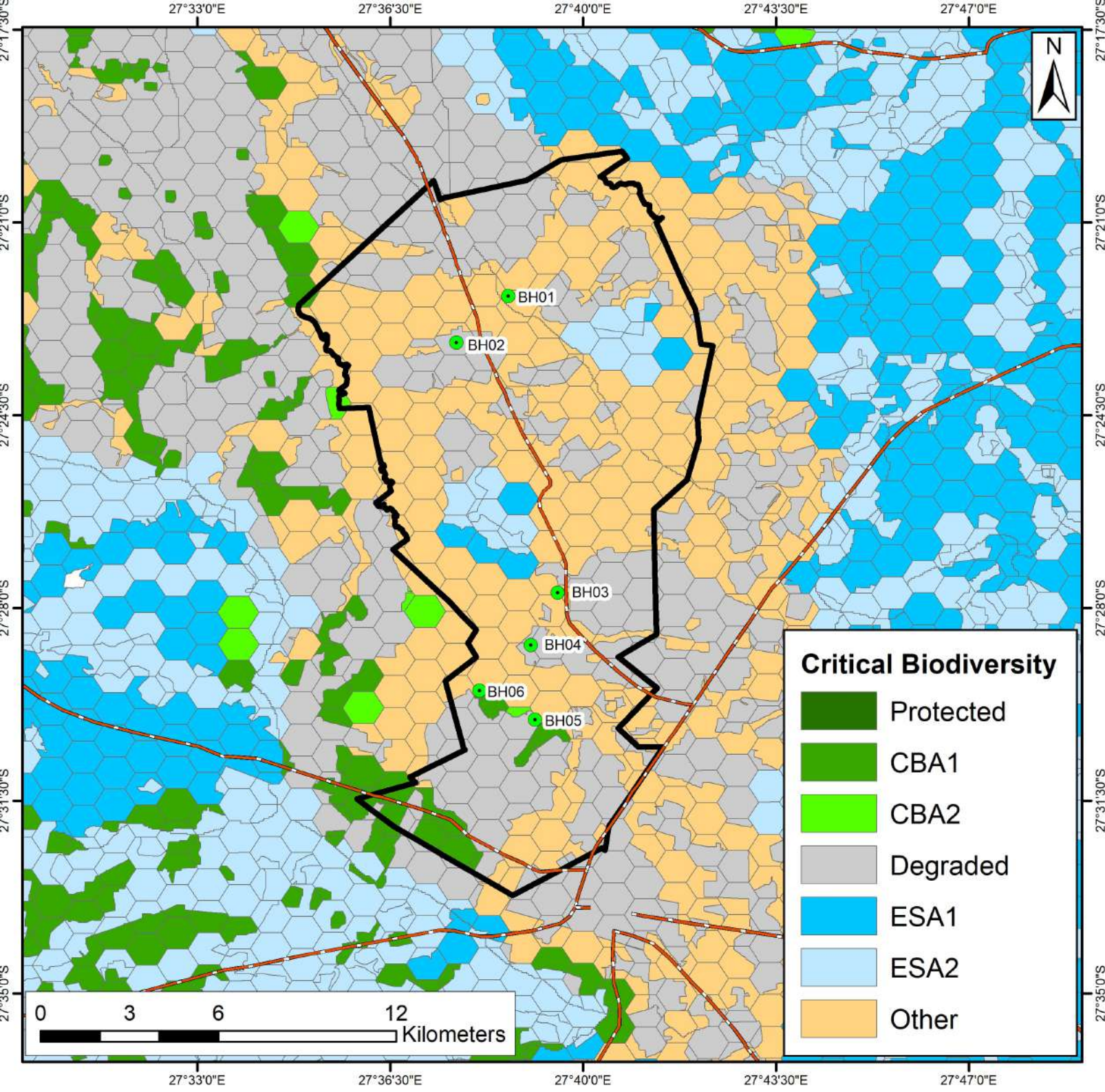
Source:
Department of Water and Sanitation



Coord System: GCS WGS 1984
Datum: WGS 1984
Units: Degrees

- NFEPA Rivers (PES1999)**
- CLASS A: UNMODIFIED, NATURAL
 - CLASS B: LARGELY NATURAL
 - CLASS C: MODERATELY MODIFIED
 - CLASS D: LARGELY MODIFIED
 - CLASS E - F: NOT AN ACCEPTABLE

Prepared by:

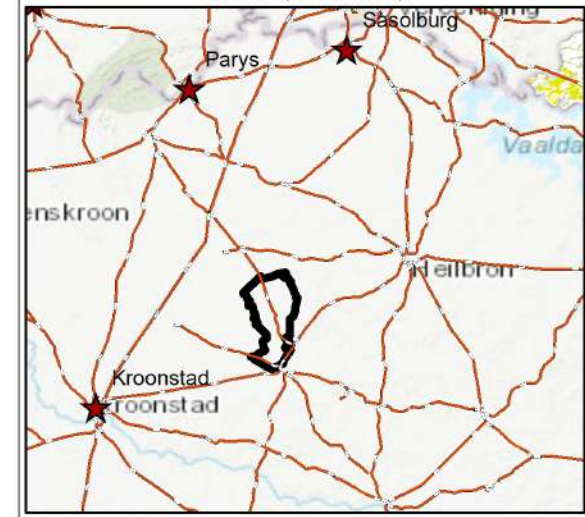


Critical Biodiversity

New Koonstad North

- Planned Boreholes
- Provincial Roads
- New Koonstad North

Source:
 Department of Economic, Small Business Development, Tourism and Environmental Affairs (DESTE)

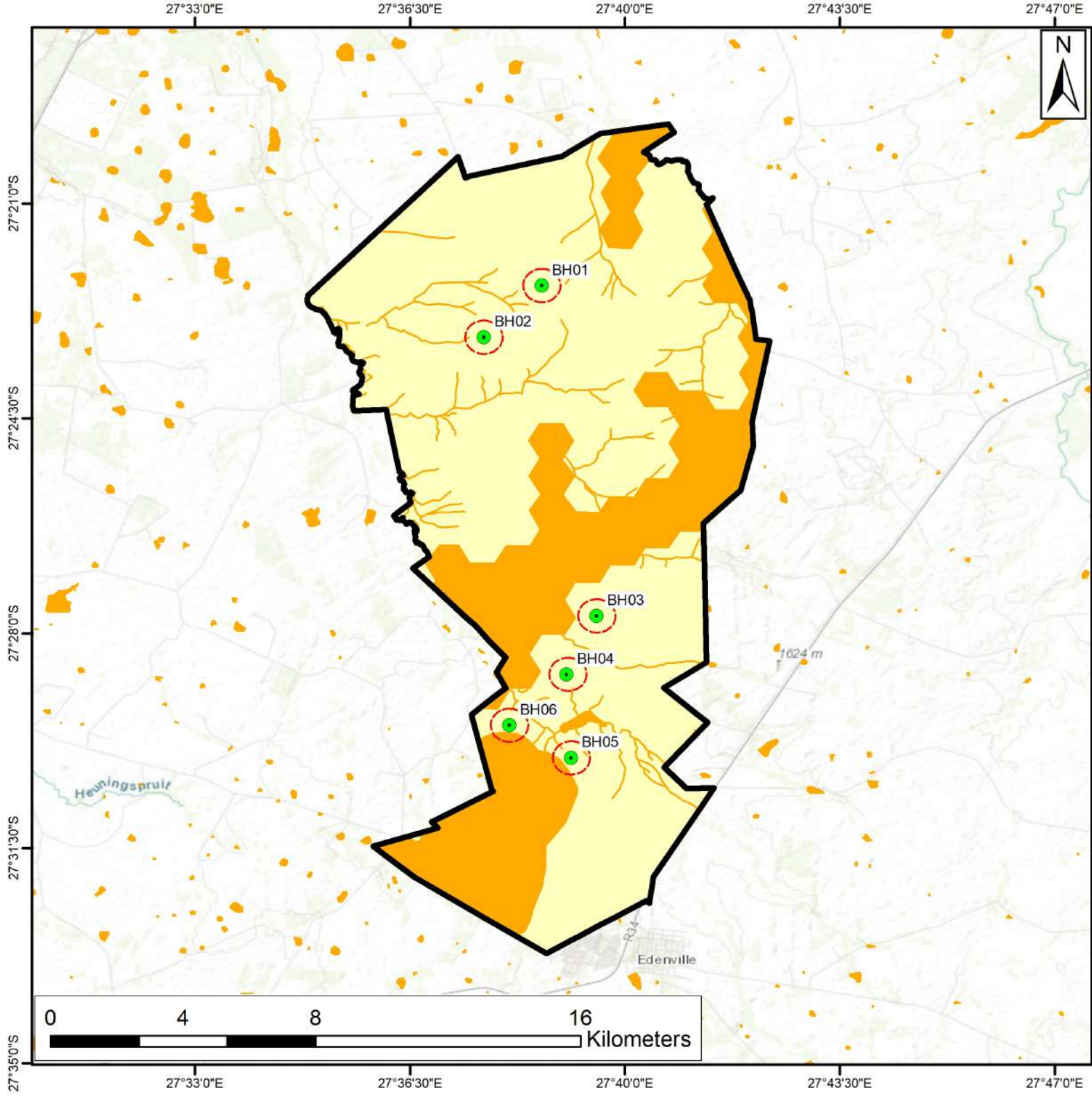


Critical Biodiversity

- Protected
- CBA1
- CBA2
- Degraded
- ESA1
- ESA2
- Other

Coord System: GCS WGS 1984
 Datum: WGS 1984
 Units: Degrees

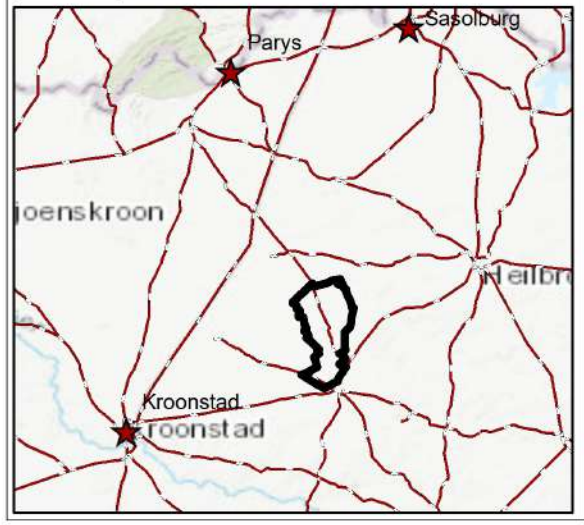
Prepared by:



Combined Sensitivity Map

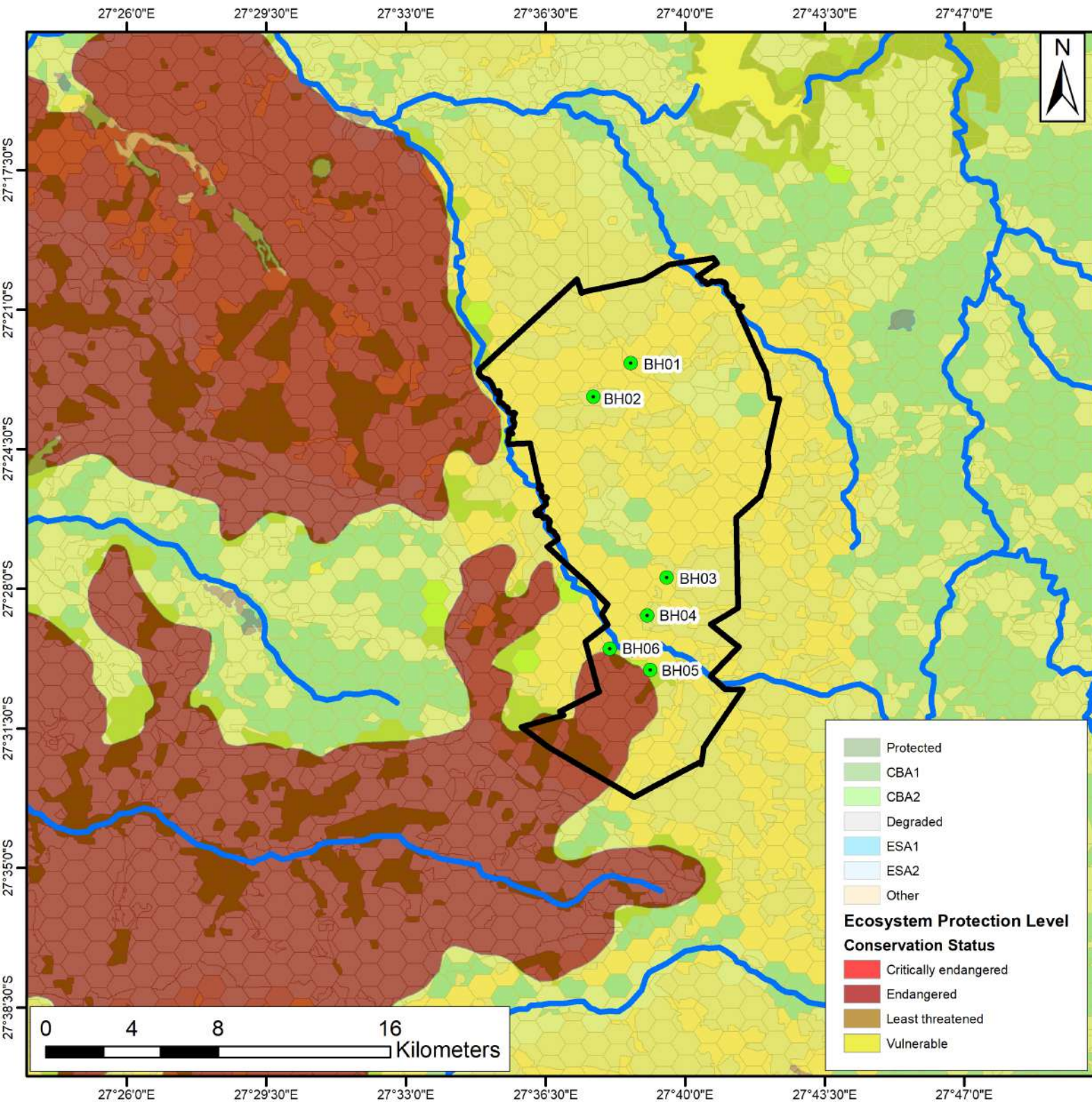
New Kroonstad North

- Drillhole Sites
- Secondary PAOI
- High Sensitivity
- Low Sensitivity
- NFEPA Wetlands
- New Kroonstad North



Coord System: GCS WGS 1984
 Datum: WGS 1984
 Units: Degrees

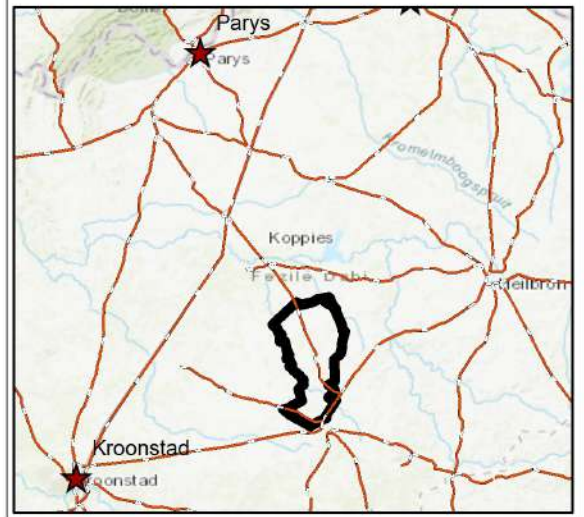
Prepared by:



Composite

New Kroonstad North

- Planned Boreholes
- Perennial Rivers
- New Kroonstad North



- | | |
|---|-----------|
| | Protected |
| | CBA1 |
| | CBA2 |
| | Degraded |
| | ESA1 |
| | ESA2 |
| | Other |
- Ecosystem Protection Level**
- Conservation Status**
- | | |
|---|-----------------------|
| | Critically endangered |
| | Endangered |
| | Least threatened |
| | Vulnerable |

Coord System: GCS WGS 1984

Datum: WGS 1984

Units: Degrees

Prepared by: