

**SCREENING REPORT FOR AN ENVIRONMENTAL AUTHORIZATION AS
REQUIRED BY THE 2014 EIA REGULATIONS – PROPOSED SITE
ENVIRONMENTAL SENSITIVITY**

EIA Reference number: LP 30/5/1/2/2/10248 MR /LP 30/5/1/2/3/2/1/10248 EM

Project name: Dithabeng Mining Mphahlele

Project title: Dithabeng Mining Mphahlele

Date screening report generated: 13/12/2024 10:50:33

Applicant: Ba Mphahlele Traditional Authority (Mphahlele Community Development Trust) and Dithabeng Mining

Compiler: Shango Solutions (Pty) Ltd

Compiler signature:
.....

Application Category: Mining | Mining Right

Table of Contents

- Proposed Project Location 3
 - Orientation map 1: General location..... 3
- Map of proposed site and relevant area(s)..... 4
 - Cadastral details of the proposed site..... 4
 - Wind and Solar developments with an approved Environmental Authorisation or applications under consideration within 30 km of the proposed area..... 13
 - Environmental Management Frameworks relevant to the application 13
- Environmental screening results and assessment outcomes 13
 - Relevant development incentives, restrictions, exclusions or prohibitions 14
 - Proposed Development Area Environmental Sensitivity..... 14
 - Specialist assessments identified 14
- Results of the environmental sensitivity of the proposed area 16
 - MAP OF RELATIVE AGRICULTURE THEME SENSITIVITY 16
 - MAP OF RELATIVE ANIMAL SPECIES THEME SENSITIVITY..... 17
 - MAP OF RELATIVE AQUATIC BIODIVERSITY THEME SENSITIVITY 18
 - MAP OF RELATIVE ARCHAEOLOGICAL AND CULTURAL HERITAGE THEME SENSITIVITY..... 19
 - MAP OF RELATIVE CIVIL AVIATION THEME SENSITIVITY 20
 - MAP OF RELATIVE DEFENCE THEME SENSITIVITY 21
 - MAP OF RELATIVE PALEONTOLOGY THEME SENSITIVITY 22
 - MAP OF RELATIVE PLANT SPECIES THEME SENSITIVITY 23
 - MAP OF RELATIVE TERRESTRIAL BIODIVERSITY THEME SENSITIVITY 24

Proposed Project Location

Orientation map 1: General location



Map of proposed site and relevant area(s)



Cadastral details of the proposed site

Property details:

No	Farm Name	Farm/ Erf No	Portion	Latitude	Longitude	Property Type
1	MMAOLO	1	0	24°19'0.45S	29°34'1.64E	Erven
2	MMAOLO	2	0	24°19'1.2S	29°34'1.33E	Erven
3	MMAOLO	3	0	24°19'1.88S	29°34'1.14E	Erven
4	MMAOLO	4	0	24°19'2.57S	29°34'1.16E	Erven
5	MMAOLO	5	0	24°19'3.15S	29°34'1.46E	Erven
6	MMAOLO	6	0	24°19'3.72S	29°34'1.71E	Erven
7	MMAOLO	7	0	24°19'4.37S	29°34'1.99E	Erven
8	MMAOLO	8	0	24°19'5.02S	29°34'2.27E	Erven
9	MMAOLO	9	0	24°19'5.59S	29°34'2.5E	Erven
10	MMAOLO	10	0	24°19'6.16S	29°34'2.78E	Erven
11	MMAOLO	11	0	24°19'6.85S	29°34'3.05E	Erven
12	MMAOLO	12	0	24°19'7.43S	29°34'3.32E	Erven
13	MMAOLO	13	0	24°19'8.01S	29°34'3.59E	Erven
14	MMAOLO	14	0	24°19'8.58S	29°34'3.85E	Erven
15	MMAOLO	15	0	24°19'9.14S	29°34'4.1E	Erven
16	MMAOLO	16	0	24°19'9.59S	29°34'4.52E	Erven
17	MMAOLO	17	0	24°19'9.61S	29°34'5.26E	Erven
18	MMAOLO	18	0	24°19'9.63S	29°34'6.04E	Erven
19	MMAOLO	19	0	24°19'9.65S	29°34'6.77E	Erven
20	MMAOLO	20	0	24°19'9.68S	29°34'7.46E	Erven
21	MMAOLO	21	0	24°19'9.71S	29°34'8.14E	Erven
22	MMAOLO	22	0	24°19'9.73S	29°34'8.83E	Erven
23	MMAOLO	23	0	24°19'9.75S	29°34'9.51E	Erven
24	MMAOLO	24	0	24°19'9.79S	29°34'10.24E	Erven
25	MMAOLO	25	0	24°19'9.87S	29°34'10.95E	Erven
26	MMAOLO	26	0	24°19'9.93S	29°34'11.68E	Erven
27	MMAOLO	27	0	24°19'9.94S	29°34'12.38E	Erven

28	MMAOLO	28	0	24°19'9.27S	29°34'13.01E	Erven
29	MMAOLO	29	0	24°19'9.79S	29°34'13.34E	Erven
30	MMAOLO	30	0	24°19'10.04S	29°34'14.05E	Erven
31	MMAOLO	31	0	24°19'10.31S	29°34'14.79E	Erven
32	MMAOLO	32	0	24°19'10.4S	29°34'15.5E	Erven
33	MMAOLO	33	0	24°19'10.48S	29°34'16.19E	Erven
34	MMAOLO	34	0	24°19'10.65S	29°34'16.89E	Erven
35	MMAOLO	35	0	24°19'10.8S	29°34'17.57E	Erven
36	MMAOLO	36	0	24°19'10.96S	29°34'18.27E	Erven
37	MMAOLO	37	0	24°19'11.18S	29°34'19.06E	Erven
38	MMAOLO	38	0	24°19'11.35S	29°34'19.96E	Erven
39	MMAOLO	39	0	24°19'11.57S	29°34'20.84E	Erven
40	MMAOLO	40	0	24°19'11.72S	29°34'21.57E	Erven
41	MMAOLO	41	0	24°19'11.87S	29°34'22.22E	Erven
42	MMAOLO	42	0	24°19'12.01S	29°34'22.86E	Erven
43	MMAOLO	43	0	24°19'12.19S	29°34'23.54E	Erven
44	MMAOLO	44	0	24°19'12.37S	29°34'24.21E	Erven
45	MMAOLO	45	0	24°19'12.55S	29°34'24.89E	Erven
46	MMAOLO	46	0	24°19'12.73S	29°34'25.56E	Erven
47	MMAOLO	47	0	24°19'12.88S	29°34'26.45E	Erven
48	MMAOLO	48	0	24°19'13.07S	29°34'27.28E	Erven
49	MMAOLO	49	0	24°19'13.32S	29°34'27.94E	Erven
50	MMAOLO	50	0	24°19'13.49S	29°34'28.59E	Erven
51	MMAOLO	51	0	24°19'13.67S	29°34'29.3E	Erven
52	MMAOLO	52	0	24°19'13.64S	29°34'30E	Erven
53	MMAOLO	53	0	24°19'13.43S	29°34'30.72E	Erven
54	MMAOLO	54	0	24°19'13.17S	29°34'31.4E	Erven
55	MMAOLO	55	0	24°19'14.16S	29°34'30.74E	Erven
56	MMAOLO	56	0	24°19'14.2S	29°34'31.47E	Erven
57	MMAOLO	57	0	24°19'14.4S	29°34'32.21E	Erven
58	MMAOLO	58	0	24°19'14.61S	29°34'32.92E	Erven
59	MMAOLO	59	0	24°19'14.81S	29°34'33.64E	Erven
60	MMAOLO	60	0	24°19'15.03S	29°34'34.35E	Erven
61	MMAOLO	61	0	24°19'15.23S	29°34'35.06E	Erven
62	MMAOLO	62	0	24°19'15.33S	29°34'35.61E	Erven
63	MMAOLO	63	0	24°19'15.52S	29°34'36.22E	Erven
64	MMAOLO	64	0	24°19'15.7S	29°34'36.9E	Erven
65	MMAOLO	65	0	24°19'15.89S	29°34'37.62E	Erven
66	MMAOLO	66	0	24°19'16.07S	29°34'38.34E	Erven
67	MMAOLO	67	0	24°19'16.26S	29°34'39.06E	Erven
68	MMAOLO	68	0	24°19'16.47S	29°34'39.72E	Erven
69	MMAOLO	69	0	24°19'16.61S	29°34'40.38E	Erven
70	MMAOLO	70	0	24°19'16.77S	29°34'41.04E	Erven
71	MMAOLO	71	0	24°19'16.94S	29°34'41.68E	Erven
72	MMAOLO	72	0	24°19'17.14S	29°34'42.36E	Erven
73	MMAOLO	73	0	24°19'17.3S	29°34'43.07E	Erven
74	MMAOLO	74	0	24°19'17.5S	29°34'43.8E	Erven
75	MMAOLO	75	0	24°19'17.68S	29°34'44.53E	Erven
76	MMAOLO	76	0	24°19'17.82S	29°34'45.31E	Erven
77	MMAOLO	77	0	24°19'17.89S	29°34'46.06E	Erven
78	MMAOLO	78	0	24°19'17.95S	29°34'46.78E	Erven
79	MMAOLO	79	0	24°19'18.03S	29°34'47.42E	Erven
80	MMAOLO	80	0	24°19'18.1S	29°34'48.03E	Erven
81	MMAOLO	81	0	24°19'18.16S	29°34'48.69E	Erven
82	MMAOLO	82	0	24°19'18.25S	29°34'49.42E	Erven
83	MMAOLO	83	0	24°19'18.3S	29°34'50.17E	Erven
84	MMAOLO	84	0	24°19'18.35S	29°34'50.92E	Erven
85	MMAOLO	85	0	24°19'18.49S	29°34'52.04E	Erven
86	MMAOLO	86	0	24°19'19.17S	29°34'51.75E	Erven
87	MMAOLO	87	0	24°19'19.82S	29°34'51.56E	Erven

88	MMAOLO	88	0	24°19'20.45S	29°34'51.38E	Erven
89	MMAOLO	89	0	24°19'21.13S	29°34'51.19E	Erven
90	MMAOLO	90	0	24°19'0.98S	29°34'7.98E	Erven
91	MMAOLO	91	0	24°19'6.05S	29°34'9.99E	Erven
92	MMAOLO	92	0	24°19'6.02S	29°34'9.25E	Erven
93	MMAOLO	93	0	24°19'5.98S	29°34'8.46E	Erven
94	MMAOLO	94	0	24°19'5.89S	29°34'7.69E	Erven
95	MMAOLO	95	0	24°19'5.83S	29°34'6.86E	Erven
96	MMAOLO	96	0	24°19'2.74S	29°34'5.7E	Erven
97	MMAOLO	97	0	24°19'2.1S	29°34'5.36E	Erven
98	MMAOLO	98	0	24°19'1.38S	29°34'5.06E	Erven
99	MMAOLO	99	0	24°19'1.1S	29°34'4.32E	Erven
100	MMAOLO	100	0	24°19'0.87S	29°34'3.47E	Erven
101	MMAOLO	101	0	24°19'0.69S	29°34'2.65E	Erven
102	MMAOLO	102	0	24°19'2.29S	29°34'3.7E	Erven
103	MMAOLO	103	0	24°19'2.86S	29°34'4.16E	Erven
104	MMAOLO	104	0	24°19'3.48S	29°34'4.41E	Erven
105	MMAOLO	105	0	24°19'4.1S	29°34'4.66E	Erven
106	MMAOLO	106	0	24°19'4.73S	29°34'4.94E	Erven
107	MMAOLO	107	0	24°19'5.3S	29°34'5.2E	Erven
108	MMAOLO	108	0	24°19'6.01S	29°34'5.43E	Erven
109	MMAOLO	109	0	24°19'6.35S	29°34'4.52E	Erven
110	MMAOLO	110	0	24°19'5.73S	29°34'4.28E	Erven
111	MMAOLO	111	0	24°19'5.09S	29°34'3.96E	Erven
112	MMAOLO	112	0	24°19'4.45S	29°34'3.64E	Erven
113	MMAOLO	113	0	24°19'3.84S	29°34'3.33E	Erven
114	MMAOLO	114	0	24°19'3.26S	29°34'3.15E	Erven
115	MMAOLO	115	0	24°19'2.68S	29°34'2.96E	Erven
116	MMAOLO	116	0	24°19'1.99S	29°34'2.64E	Erven
117	MMAOLO	117	0	24°19'7.57S	29°34'4.89E	Erven
118	MMAOLO	118	0	24°19'7.33S	29°34'5.5E	Erven
119	MMAOLO	119	0	24°19'7.26S	29°34'6.31E	Erven
120	MMAOLO	120	0	24°19'7.27S	29°34'7.03E	Erven
121	MMAOLO	121	0	24°19'7.32S	29°34'7.78E	Erven
122	MMAOLO	122	0	24°19'7.38S	29°34'8.56E	Erven
123	MMAOLO	123	0	24°19'7.46S	29°34'9.27E	Erven
124	MMAOLO	124	0	24°19'7.49S	29°34'9.91E	Erven
125	MMAOLO	125	0	24°19'7.51S	29°34'10.74E	Erven
126	MMAOLO	126	0	24°19'8.07S	29°34'11.95E	Erven
127	MMAOLO	127	0	24°19'8.59S	29°34'11.39E	Erven
128	MMAOLO	128	0	24°19'8.5S	29°34'10.57E	Erven
129	MMAOLO	129	0	24°19'8.37S	29°34'9.73E	Erven
130	MMAOLO	130	0	24°19'8.33S	29°34'9.14E	Erven
131	MMAOLO	131	0	24°19'8.3S	29°34'8.38E	Erven
132	MMAOLO	132	0	24°19'8.24S	29°34'7.67E	Erven
133	MMAOLO	133	0	24°19'8.22S	29°34'6.99E	Erven
134	MMAOLO	134	0	24°19'8.2S	29°34'6.32E	Erven
135	MMAOLO	135	0	24°19'8.24S	29°34'5.6E	Erven
136	MMAOLO	136	0	24°19'1.9S	29°34'12.18E	Erven
137	MMAOLO	137	0	24°19'2.76S	29°34'12.49E	Erven
138	MMAOLO	138	0	24°19'3.46S	29°34'12.33E	Erven
139	MMAOLO	139	0	24°19'4.18S	29°34'12.17E	Erven
140	MMAOLO	140	0	24°19'4.93S	29°34'12.31E	Erven
141	MMAOLO	141	0	24°19'5.76S	29°34'12.7E	Erven
142	MMAOLO	142	0	24°19'6.25S	29°34'13.34E	Erven
143	MMAOLO	143	0	24°19'6.62S	29°34'13.86E	Erven
144	MMAOLO	144	0	24°19'7.39S	29°34'13.19E	Erven
145	MMAOLO	145	0	24°19'6.9S	29°34'12.69E	Erven
146	MMAOLO	146	0	24°19'6.45S	29°34'12.09E	Erven
147	MMAOLO	147	0	24°19'5.9S	29°34'11.57E	Erven

148	MMAOLO	148	0	24°19'5.17S	29°34'11.3E	Erven
149	MMAOLO	149	0	24°19'4.49S	29°34'11E	Erven
150	MMAOLO	150	0	24°19'3.84S	29°34'11.13E	Erven
151	MMAOLO	151	0	24°19'3.18S	29°34'11.26E	Erven
152	MMAOLO	152	0	24°19'2.54S	29°34'11.42E	Erven
153	MMAOLO	153	0	24°19'2.43S	29°34'14.65E	Erven
154	MMAOLO	154	0	24°19'3.39S	29°34'15.17E	Erven
155	MMAOLO	155	0	24°19'3.96S	29°34'15.05E	Erven
156	MMAOLO	156	0	24°19'4.63S	29°34'14.9E	Erven
157	MMAOLO	157	0	24°19'5.46S	29°34'14.77E	Erven
158	MMAOLO	158	0	24°19'4.71S	29°34'13.8E	Erven
159	MMAOLO	159	0	24°19'3.8S	29°34'13.87E	Erven
160	MMAOLO	160	0	24°19'3.13S	29°34'14E	Erven
161	MMAOLO	161	0	24°19'3.09S	29°34'17.4E	Erven
162	MMAOLO	162	0	24°19'3.94S	29°34'17.66E	Erven
163	MMAOLO	163	0	24°19'4.62S	29°34'17.55E	Erven
164	MMAOLO	164	0	24°19'5.21S	29°34'17.42E	Erven
165	MMAOLO	165	0	24°19'5.86S	29°34'17.3E	Erven
166	MMAOLO	166	0	24°19'6.67S	29°34'17.21E	Erven
167	MMAOLO	167	0	24°19'6.52S	29°34'16.21E	Erven
168	MMAOLO	168	0	24°19'5.67S	29°34'16.17E	Erven
169	MMAOLO	169	0	24°19'5.02S	29°34'16.35E	Erven
170	MMAOLO	170	0	24°19'4.36S	29°34'16.5E	Erven
171	MMAOLO	171	0	24°19'3.64S	29°34'16.63E	Erven
172	MMAOLO	172	0	24°19'7.34S	29°34'14.81E	Erven
173	MMAOLO	173	0	24°19'7.71S	29°34'15.39E	Erven
174	MMAOLO	174	0	24°19'8.02S	29°34'16.11E	Erven
175	MMAOLO	175	0	24°19'8.26S	29°34'17.09E	Erven
176	MMAOLO	176	0	24°19'9.05S	29°34'16.89E	Erven
177	MMAOLO	177	0	24°19'9S	29°34'16.06E	Erven
178	MMAOLO	178	0	24°19'8.77S	29°34'15.21E	Erven
179	MMAOLO	179	0	24°19'8.58S	29°34'14.56E	Erven
180	MMAOLO	180	0	24°19'8.13S	29°34'14.08E	Erven
181	MMAOLO	181	0	24°19'6.55S	29°34'19.92E	Erven
182	MMAOLO	182	0	24°19'4.81S	29°34'21.15E	Erven
183	MMAOLO	183	0	24°19'5.41S	29°34'21.04E	Erven
184	MMAOLO	184	0	24°19'6.05S	29°34'21.01E	Erven
185	MMAOLO	185	0	24°19'6.74S	29°34'20.94E	Erven
186	MMAOLO	186	0	24°19'7.39S	29°34'20.82E	Erven
187	MMAOLO	187	0	24°19'8.05S	29°34'20.71E	Erven
188	MMAOLO	188	0	24°19'8.67S	29°34'20.55E	Erven
189	MMAOLO	189	0	24°19'9.31S	29°34'20.39E	Erven
190	MMAOLO	190	0	24°19'10.04S	29°34'20.36E	Erven
191	MMAOLO	191	0	24°19'9.58S	29°34'18.23E	Erven
192	MMAOLO	192	0	24°19'8.81S	29°34'18.37E	Erven
193	MMAOLO	193	0	24°19'8.09S	29°34'18.49E	Erven
194	MMAOLO	194	0	24°19'7.47S	29°34'18.6E	Erven
195	MMAOLO	195	0	24°19'6.84S	29°34'18.69E	Erven
196	MMAOLO	196	0	24°19'6.22S	29°34'18.79E	Erven
197	MMAOLO	197	0	24°19'5.6S	29°34'18.88E	Erven
198	MMAOLO	198	0	24°19'4.97S	29°34'18.98E	Erven
199	MMAOLO	199	0	24°19'4.36S	29°34'19.06E	Erven
200	MMAOLO	200	0	24°19'4.78S	29°34'24.96E	Erven
201	MMAOLO	201	0	24°19'6.35S	29°34'28.18E	Erven
202	MMAOLO	202	0	24°19'7.06S	29°34'27.93E	Erven
203	MMAOLO	203	0	24°19'7.72S	29°34'27.75E	Erven
204	MMAOLO	204	0	24°19'8.38S	29°34'27.58E	Erven
205	MMAOLO	205	0	24°19'9.12S	29°34'27.43E	Erven
206	MMAOLO	206	0	24°19'7.92S	29°34'22.21E	Erven
207	MMAOLO	207	0	24°19'7.23S	29°34'22.31E	Erven

208	MMAOLO	208	0	24°19'6.54S	29°34'22.39E	Erven
209	MMAOLO	209	0	24°19'5.86S	29°34'22.53E	Erven
210	MMAOLO	210	0	24°19'5.18S	29°34'22.65E	Erven
211	MMAOLO	211	0	24°19'5.98S	29°34'30.18E	Erven
212	MMAOLO	212	0	24°19'6.95S	29°34'30.63E	Erven
213	MMAOLO	213	0	24°19'7.62S	29°34'30.41E	Erven
214	MMAOLO	214	0	24°19'8.26S	29°34'30.29E	Erven
215	MMAOLO	215	0	24°19'8.89S	29°34'30.11E	Erven
216	MMAOLO	216	0	24°19'9.64S	29°34'29.81E	Erven
217	MMAOLO	217	0	24°19'9.54S	29°34'28.86E	Erven
218	MMAOLO	218	0	24°19'8.66S	29°34'29E	Erven
219	MMAOLO	219	0	24°19'8.04S	29°34'29.19E	Erven
220	MMAOLO	220	0	24°19'7.38S	29°34'29.4E	Erven
221	MMAOLO	221	0	24°19'6.69S	29°34'29.59E	Erven
222	MMAOLO	222	0	24°19'9.31S	29°34'21.95E	Erven
223	MMAOLO	223	0	24°19'9.44S	29°34'22.64E	Erven
224	MMAOLO	224	0	24°19'9.58S	29°34'23.34E	Erven
225	MMAOLO	225	0	24°19'9.75S	29°34'24.04E	Erven
226	MMAOLO	226	0	24°19'9.93S	29°34'24.73E	Erven
227	MMAOLO	227	0	24°19'10.1S	29°34'25.42E	Erven
228	MMAOLO	228	0	24°19'10.28S	29°34'26.1E	Erven
229	MMAOLO	229	0	24°19'10.44S	29°34'26.78E	Erven
230	MMAOLO	230	0	24°19'10.63S	29°34'27.57E	Erven
231	MMAOLO	231	0	24°19'10.79S	29°34'28.32E	Erven
232	MMAOLO	232	0	24°19'10.97S	29°34'29.05E	Erven
233	MMAOLO	233	0	24°19'11.13S	29°34'29.76E	Erven
234	MMAOLO	234	0	24°19'10.97S	29°34'30.42E	Erven
235	MMAOLO	235	0	24°19'11.53S	29°34'30.79E	Erven
236	MMAOLO	236	0	24°19'11.9S	29°34'30.04E	Erven
237	MMAOLO	237	0	24°19'12.21S	29°34'29.39E	Erven
238	MMAOLO	238	0	24°19'11.97S	29°34'28.74E	Erven
239	MMAOLO	239	0	24°19'11.72S	29°34'28.05E	Erven
240	MMAOLO	240	0	24°19'11.52S	29°34'27.35E	Erven
241	MMAOLO	241	0	24°19'11.33S	29°34'26.67E	Erven
242	MMAOLO	242	0	24°19'11.15S	29°34'25.98E	Erven
243	MMAOLO	243	0	24°19'10.96S	29°34'25.23E	Erven
244	MMAOLO	244	0	24°19'10.85S	29°34'24.48E	Erven
245	MMAOLO	245	0	24°19'10.69S	29°34'23.83E	Erven
246	MMAOLO	246	0	24°19'10.53S	29°34'23.18E	Erven
247	MMAOLO	247	0	24°19'10.4S	29°34'22.53E	Erven
248	MMAOLO	248	0	24°19'10.22S	29°34'21.84E	Erven
249	MMAOLO	249	0	24°19'7.96S	29°34'39.04E	Erven
250	MMAOLO	250	0	24°19'11.51S	29°34'38.24E	Erven
251	MMAOLO	251	0	24°19'14.43S	29°34'46.72E	Erven
252	MMAOLO	252	0	24°19'14.97S	29°34'46.93E	Erven
253	MMAOLO	253	0	24°19'15.62S	29°34'47.13E	Erven
254	MMAOLO	254	0	24°19'16.43S	29°34'47.31E	Erven
255	MMAOLO	255	0	24°19'9.97S	29°34'31.5E	Erven
256	MMAOLO	256	0	24°19'9.22S	29°34'31.72E	Erven
257	MMAOLO	257	0	24°19'8.55S	29°34'31.85E	Erven
258	MMAOLO	258	0	24°19'7.81S	29°34'32.11E	Erven
259	MMAOLO	259	0	24°19'7.27S	29°34'32.23E	Erven
260	MMAOLO	260	0	24°19'10.37S	29°34'49.21E	Erven
261	MMAOLO	261	0	24°19'11.26S	29°34'49.61E	Erven
262	MMAOLO	262	0	24°19'11.86S	29°34'49.37E	Erven
263	MMAOLO	263	0	24°19'12.47S	29°34'49.19E	Erven
264	MMAOLO	264	0	24°19'13.23S	29°34'49.06E	Erven
265	MMAOLO	265	0	24°19'13.98S	29°34'49.32E	Erven
266	MMAOLO	266	0	24°19'14.69S	29°34'49.5E	Erven
267	MMAOLO	267	0	24°19'15.34S	29°34'49.72E	Erven

268	MMAOLO	268	0	24°19'16.01S	29°34'49.94E	Erven
269	MMAOLO	269	0	24°19'16.82S	29°34'50.2E	Erven
270	MMAOLO	270	0	24°19'16.72S	29°34'49.14E	Erven
271	MMAOLO	271	0	24°19'15.93S	29°34'48.8E	Erven
272	MMAOLO	272	0	24°19'15.14S	29°34'48.46E	Erven
273	MMAOLO	273	0	24°19'14.4S	29°34'48.19E	Erven
274	MMAOLO	274	0	24°19'13.72S	29°34'48.05E	Erven
275	MMAOLO	275	0	24°19'12.95S	29°34'48.1E	Erven
276	MMAOLO	276	0	24°19'12.25S	29°34'48.18E	Erven
277	MMAOLO	277	0	24°19'11.52S	29°34'48.34E	Erven
278	MMAOLO	278	0	24°19'10.92S	29°34'48.51E	Erven
279	MMAOLO	279	0	24°19'10.89S	29°34'51.8E	Erven
280	MMAOLO	280	0	24°19'11.88S	29°34'52.1E	Erven
281	MMAOLO	281	0	24°19'12.77S	29°34'51.87E	Erven
282	MMAOLO	282	0	24°19'13.63S	29°34'51.81E	Erven
283	MMAOLO	283	0	24°19'14.53S	29°34'52.06E	Erven
284	MMAOLO	284	0	24°19'15.34S	29°34'52.28E	Erven
285	MMAOLO	285	0	24°19'15.25S	29°34'53.05E	Erven
286	MMAOLO	286	0	24°19'16S	29°34'52.87E	Erven
287	MMAOLO	287	0	24°19'16.62S	29°34'52.74E	Erven
288	MMAOLO	288	0	24°19'17.28S	29°34'52.5E	Erven
289	MMAOLO	289	0	24°19'16.85S	29°34'51.75E	Erven
290	MMAOLO	290	0	24°19'16.07S	29°34'51.49E	Erven
291	MMAOLO	291	0	24°19'15.35S	29°34'51.29E	Erven
292	MMAOLO	292	0	24°19'14.75S	29°34'51.09E	Erven
293	MMAOLO	293	0	24°19'14.1S	29°34'50.9E	Erven
294	MMAOLO	294	0	24°19'13.49S	29°34'50.7E	Erven
295	MMAOLO	295	0	24°19'12.82S	29°34'50.53E	Erven
296	MMAOLO	296	0	24°19'12.23S	29°34'50.83E	Erven
297	MMAOLO	297	0	24°19'11.56S	29°34'51.12E	Erven
298	MMAOLO	298	0	24°19'11.48S	29°34'54.42E	Erven
299	MMAOLO	299	0	24°19'12.35S	29°34'54.62E	Erven
300	MMAOLO	300	0	24°19'13.26S	29°34'54.55E	Erven
301	MMAOLO	301	0	24°19'14.19S	29°34'54.6E	Erven
302	MMAOLO	302	0	24°19'14.23S	29°34'53.82E	Erven
303	MMAOLO	303	0	24°19'13.67S	29°34'53.39E	Erven
304	MMAOLO	304	0	24°19'12.88S	29°34'53.16E	Erven
305	MMAOLO	305	0	24°19'12.05S	29°34'53.44E	Erven
306	MMAOLO	306	0	24°19'12.45S	29°34'58.99E	Erven
307	MMAOLO	307	0	24°19'13.79S	29°35'0.89E	Erven
308	MMAOLO	308	0	24°19'14.48S	29°35'0.75E	Erven
309	MMAOLO	309	0	24°19'15.11S	29°35'0.53E	Erven
310	MMAOLO	310	0	24°19'15.85S	29°35'0.35E	Erven
311	MMAOLO	311	0	24°19'15.75S	29°34'59.39E	Erven
312	MMAOLO	312	0	24°19'14.9S	29°34'59.5E	Erven
313	MMAOLO	313	0	24°19'14.17S	29°34'59.81E	Erven
314	MMAOLO	314	0	24°19'13.59S	29°34'59.62E	Erven
315	MMAOLO	315	0	24°19'13.5S	29°34'58.77E	Erven
316	MMAOLO	316	0	24°19'13.39S	29°34'57.97E	Erven
317	MMAOLO	317	0	24°19'13.21S	29°34'57.21E	Erven
318	MMAOLO	318	0	24°19'13.78S	29°34'56.45E	Erven
319	MMAOLO	319	0	24°19'12.97S	29°34'56.1E	Erven
320	MMAOLO	320	0	24°19'15.65S	29°34'57.87E	Erven
321	MMAOLO	321	0	24°19'15.85S	29°34'57.24E	Erven
322	MMAOLO	322	0	24°19'16.03S	29°34'56.55E	Erven
323	MMAOLO	323	0	24°19'16.14S	29°34'55.8E	Erven
324	MMAOLO	324	0	24°19'16.75S	29°34'55.26E	Erven
325	MMAOLO	325	0	24°19'17.37S	29°34'55.1E	Erven
326	MMAOLO	326	0	24°19'18.13S	29°34'54.93E	Erven
327	MMAOLO	327	0	24°19'17.82S	29°34'54.08E	Erven

328	MMAOLO	328	0	24°19'17.12S	29°34'54.14E	Erven
329	MMAOLO	329	0	24°19'16.46S	29°34'54.3E	Erven
330	MMAOLO	330	0	24°19'15.75S	29°34'54.5E	Erven
331	MMAOLO	331	0	24°19'15.21S	29°34'54.93E	Erven
332	MMAOLO	332	0	24°19'15.12S	29°34'55.72E	Erven
333	MMAOLO	333	0	24°19'14.94S	29°34'56.6E	Erven
334	MMAOLO	334	0	24°19'14.77S	29°34'57.21E	Erven
335	MMAOLO	335	0	24°19'14.61S	29°34'57.96E	Erven
336	MMAOLO	336	0	24°19'17.14S	29°35'0.01E	Erven
337	MMAOLO	337	0	24°19'17.93S	29°34'59.94E	Erven
338	MMAOLO	338	0	24°19'18.67S	29°34'59.86E	Erven
339	MMAOLO	339	0	24°19'19.39S	29°34'59.89E	Erven
340	MMAOLO	340	0	24°19'20.12S	29°34'59.91E	Erven
341	MMAOLO	341	0	24°19'21.04S	29°34'59.78E	Erven
342	MMAOLO	342	0	24°19'21.06S	29°34'58.75E	Erven
343	MMAOLO	343	0	24°19'21S	29°34'58.01E	Erven
344	MMAOLO	344	0	24°19'20.96S	29°34'57.32E	Erven
345	MMAOLO	345	0	24°19'20.9S	29°34'56.58E	Erven
346	MMAOLO	346	0	24°19'20.8S	29°34'55.82E	Erven
347	MMAOLO	347	0	24°19'20.57S	29°34'54.97E	Erven
348	MMAOLO	348	0	24°19'20.42S	29°34'54.23E	Erven
349	MMAOLO	349	0	24°19'20.25S	29°34'53.69E	Erven
350	MMAOLO	350	0	24°19'20.03S	29°34'53.07E	Erven
351	MMAOLO	351	0	24°19'19.09S	29°34'53.49E	Erven
352	MMAOLO	352	0	24°19'19.39S	29°34'54.5E	Erven
353	MMAOLO	353	0	24°19'19.52S	29°34'55.22E	Erven
354	MMAOLO	354	0	24°19'18.66S	29°34'57.58E	Erven
355	MMAOLO	355	0	24°19'21.27S	29°34'52.55E	Erven
356	MMAOLO	356	0	24°19'21.49S	29°34'53.24E	Erven
357	MMAOLO	357	0	24°19'21.64S	29°34'53.89E	Erven
358	MMAOLO	358	0	24°19'21.82S	29°34'54.55E	Erven
359	MMAOLO	359	0	24°19'22.04S	29°34'55.21E	Erven
360	MMAOLO	360	0	24°19'22.26S	29°34'55.9E	Erven
361	MMAOLO	361	0	24°19'22.39S	29°34'56.72E	Erven
362	MMAOLO	362	0	24°19'22.41S	29°34'57.57E	Erven
363	MMAOLO	363	0	24°19'22.45S	29°34'58.39E	Erven
364	MMAOLO	364	0	24°19'22.47S	29°34'59.2E	Erven
365	MMAOLO	365	0	24°19'22.48S	29°34'59.99E	Erven
366	MMAOLO	366	0	24°19'14.09S	29°35'5.89E	Erven
367	MMAOLO	367	0	24°19'15.7S	29°35'8.67E	Erven
368	MMAOLO	368	0	24°19'15.58S	29°35'7.88E	Erven
369	MMAOLO	369	0	24°19'15.44S	29°35'7.07E	Erven
370	MMAOLO	370	0	24°19'15.21S	29°35'6.24E	Erven
371	MMAOLO	371	0	24°19'15.09S	29°35'5.57E	Erven
372	MMAOLO	372	0	24°19'14.95S	29°35'4.88E	Erven
373	MMAOLO	373	0	24°19'14.74S	29°35'4.18E	Erven
374	MMAOLO	374	0	24°19'14.56S	29°35'3.44E	Erven
375	MMAOLO	375	0	24°19'14.4S	29°35'2.56E	Erven
376	MMAOLO	376	0	24°19'15.86S	29°35'3.15E	Erven
377	MMAOLO	377	0	24°19'16.57S	29°35'2.99E	Erven
378	MMAOLO	378	0	24°19'17.13S	29°35'2.94E	Erven
379	MMAOLO	379	0	24°19'17.75S	29°35'2.78E	Erven
380	MMAOLO	380	0	24°19'18.49S	29°35'2.6E	Erven
381	MMAOLO	381	0	24°19'18.58S	29°35'1.62E	Erven
382	MMAOLO	382	0	24°19'17.62S	29°35'1.54E	Erven
383	MMAOLO	383	0	24°19'16.98S	29°35'1.77E	Erven
384	MMAOLO	384	0	24°19'16.26S	29°35'1.98E	Erven
385	MMAOLO	385	0	24°19'15.56S	29°35'2.12E	Erven
386	MMAOLO	386	0	24°19'16.39S	29°35'5.76E	Erven
387	MMAOLO	387	0	24°19'17.09S	29°35'5.61E	Erven

388	MMAOLO	388	0	24°19'17.79S	29°35'5.47E	Erven
389	MMAOLO	389	0	24°19'18.38S	29°35'5.29E	Erven
390	MMAOLO	390	0	24°19'19.12S	29°35'5.08E	Erven
391	MMAOLO	391	0	24°19'18.89S	29°35'4.13E	Erven
392	MMAOLO	392	0	24°19'18.27S	29°35'4.18E	Erven
393	MMAOLO	393	0	24°19'17.65	29°35'4.27E	Erven
394	MMAOLO	394	0	24°19'16.86S	29°35'4.43E	Erven
395	MMAOLO	395	0	24°19'16.02S	29°35'4.68E	Erven
396	MMAOLO	396	0	24°19'16.98S	29°35'8.36E	Erven
397	MMAOLO	397	0	24°19'17.71S	29°35'8.2E	Erven
398	MMAOLO	398	0	24°19'18.29S	29°35'8.01E	Erven
399	MMAOLO	399	0	24°19'18.95S	29°35'7.84E	Erven
400	MMAOLO	400	0	24°19'19.69S	29°35'7.69E	Erven
401	MMAOLO	401	0	24°19'19.41S	29°35'6.79E	Erven
402	MMAOLO	402	0	24°19'18.81S	29°35'6.69E	Erven
403	MMAOLO	403	0	24°19'18.12S	29°35'6.84E	Erven
404	MMAOLO	404	0	24°19'17.41S	29°35'7.09E	Erven
405	MMAOLO	405	0	24°19'16.75	29°35'7.29E	Erven
406	MMAOLO	406	0	24°19'20.05S	29°35'1.24E	Erven
407	MMAOLO	407	0	24°19'20.11S	29°35'2.01E	Erven
408	MMAOLO	408	0	24°19'20.16S	29°35'2.82E	Erven
409	MMAOLO	409	0	24°19'20.21S	29°35'3.62E	Erven
410	MMAOLO	410	0	24°19'20.34S	29°35'4.42E	Erven
411	MMAOLO	411	0	24°19'20.54S	29°35'5.23E	Erven
412	MMAOLO	412	0	24°19'20.71S	29°35'5.97E	Erven
413	MMAOLO	413	0	24°19'20.89S	29°35'6.67E	Erven
414	MMAOLO	414	0	24°19'21.06S	29°35'7.4E	Erven
415	MMAOLO	415	0	24°19'21.99S	29°35'7.19E	Erven
416	MMAOLO	416	0	24°19'21.81S	29°35'6.38E	Erven
417	MMAOLO	417	0	24°19'21.67S	29°35'5.6E	Erven
418	MMAOLO	418	0	24°19'21.52S	29°35'4.85E	Erven
419	MMAOLO	419	0	24°19'21.34S	29°35'4.25E	Erven
420	MMAOLO	420	0	24°19'21.25S	29°35'3.59E	Erven
421	MMAOLO	421	0	24°19'21.15S	29°35'2.84E	Erven
422	MMAOLO	422	0	24°19'21.11S	29°35'2.02E	Erven
423	MMAOLO	423	0	24°19'21.07S	29°35'1.19E	Erven
424	MMAOLO	424	0	24°19'22.59S	29°35'1.52E	Erven
425	MMAOLO	425	0	24°19'22.65	29°35'2.3E	Erven
426	MMAOLO	426	0	24°19'22.59S	29°35'3.1E	Erven
427	MMAOLO	427	0	24°19'22.72S	29°35'3.85E	Erven
428	MMAOLO	428	0	24°19'22.85S	29°35'4.61E	Erven
429	MMAOLO	429	0	24°19'23.03S	29°35'5.37E	Erven
430	MMAOLO	430	0	24°19'23.18S	29°35'6.07E	Erven
431	MMAOLO	431	0	24°19'23.38S	29°35'6.76E	Erven
432	MMAOLO	432	0	24°19'15.21S	29°35'10.58E	Erven
433	MMAOLO	433	0	24°19'16S	29°35'10.38E	Erven
434	MMAOLO	434	0	24°19'16.64S	29°35'10.23E	Erven
435	MMAOLO	435	0	24°19'17.22S	29°35'10.06E	Erven
436	MMAOLO	436	0	24°19'17.87S	29°35'9.88E	Erven
437	MMAOLO	437	0	24°19'18.56S	29°35'9.68E	Erven
438	MMAOLO	438	0	24°19'19.15S	29°35'9.5E	Erven
439	MMAOLO	439	0	24°19'19.85	29°35'9.31E	Erven
440	MMAOLO	440	0	24°19'20.39S	29°35'9.17E	Erven
441	MMAOLO	441	0	24°19'20.99S	29°35'9.01E	Erven
442	MMAOLO	442	0	24°19'21.65S	29°35'8.82E	Erven
443	MMAOLO	443	0	24°19'22.31S	29°35'8.64E	Erven
444	MMAOLO	444	0	24°19'22.93S	29°35'8.5E	Erven
445	MMAOLO	445	0	24°19'23.67S	29°35'8.3E	Erven
446	LOCATIE VAN M'PHATLELE	457	0	24°20'8.99S	29°38'54E	Farm

447	LOCATIE VAN M'PHATLELE	457	0	24°19'58.31S	29°36'59.07E	Farm Portion
448	LOCATIE VAN M'PHATLELE	457	1	24°19'11.66S	29°34'40.13E	Farm Portion
449	LOCATIE VAN M'PHATLELE	457	42	24°19'58.98S	29°38'32.22E	Farm Portion
450	LOCATIE VAN M'PHATLELE	457	44	24°18'22.09S	29°38'21.41E	Farm Portion
451	LOCATIE VAN M'PHATLELE	457	45	24°18'29.43S	29°38'17.04E	Farm Portion
452	LOCATIE VAN M'PHATLELE	457	18	24°21'11.9S	29°42'42.12E	Farm Portion
453	LOCATIE VAN M'PHATLELE	457	26	24°18'21.86S	29°38'31.71E	Farm Portion
454	LOCATIE VAN M'PHATLELE	457	19	24°19'3.76S	29°34'31.65E	Farm Portion
455	LOCATIE VAN M'PHATLELE	457	21	24°18'18.63S	29°38'27.2E	Farm Portion
456	LOCATIE VAN M'PHATLELE	457	20	24°18'53.64S	29°39'5.73E	Farm Portion
457	LOCATIE VAN M'PHATLELE	457	22	24°18'28.14S	29°38'23.76E	Farm Portion
458	LOCATIE VAN M'PHATLELE	457	31	24°18'32.46S	29°38'22.55E	Farm Portion
459	LOCATIE VAN M'PHATLELE	457	24	24°17'49.42S	29°39'2.22E	Farm Portion
460	LOCATIE VAN M'PHATLELE	457	23	24°21'18.3S	29°35'0.6E	Farm Portion
461	LOCATIE VAN M'PHATLELE	457	28	24°19'53.88S	29°44'5.86E	Farm Portion
462	LOCATIE VAN M'PHATLELE	457	25	24°22'0.76S	29°41'39.81E	Farm Portion
463	LOCATIE VAN M'PHATLELE	457	27	24°17'38.71S	29°38'30.98E	Farm Portion
464	LOCATIE VAN M'PHATLELE	457	32	24°19'16.67S	29°37'52.41E	Farm Portion
465	LOCATIE VAN M'PHATLELE	457	29	24°18'33.89S	29°36'56.94E	Farm Portion
466	LOCATIE VAN M'PHATLELE	457	36	24°21'21.38S	29°37'1.62E	Farm Portion
467	LOCATIE VAN M'PHATLELE	457	37	24°18'56.47S	29°39'11.92E	Farm Portion
468	LOCATIE VAN M'PHATLELE	457	33	24°18'18.45S	29°34'15.61E	Farm Portion
469	LOCATIE VAN M'PHATLELE	457	34	24°18'30.15S	29°37'26.57E	Farm Portion
470	LOCATIE VAN M'PHATLELE	457	46	24°18'13.85S	29°38'28.24E	Farm Portion
471		1071	0	24°19'2.76S	29°40'15.28E	Farm Portion
472	MMAOLO	446	0	24°19'3.48S	29°34'7.63E	Public Place
473	MMAOLO	447	0	24°19'7.09S	29°34'25.17E	Public Place

Development footprint¹ vertices:
No development footprint(s) specified.

¹ “development footprint”, means the area within the site on which the development will take place and includes all ancillary developments for example roads, power lines, boundary walls, paving etc. which require vegetation clearance or which will be disturbed and for which the application has been submitted.

Wind and Solar developments with an approved Environmental Authorisation or applications under consideration within 30 km of the proposed area

No nearby wind or solar developments found.

Environmental Management Frameworks relevant to the application



Environmental Management Framework	LINK
Olifants EMF	https://screening.environment.gov.za/ScreeningDownloads/EMF/Zone_4_6_67_78_80_92_103_122_129.pdf

Environmental screening results and assessment outcomes

The following sections contain a summary of any development incentives, restrictions, exclusions or prohibitions that apply to the proposed development site as well as the most environmental sensitive features on the site based on the site sensitivity screening results for the application classification that was selected. The application classification selected for this report is:

Mining | Mining Right.

Relevant development incentives, restrictions, exclusions or prohibitions

The following development incentives, restrictions, exclusions or prohibitions and their implications that apply to this site are indicated below.

Incentive, restriction or prohibition	Implication
Strategic Transmission Corridor-International corridor	https://screening.environment.gov.za/ScreeningDownloads/DevelopmentZones/Combined_EGI.pdf
Main Electricity Distribution Substation	https://screening.environment.gov.za/ScreeningDownloads/DevelopmentZones/Distribution_Transmission.pdf

Proposed Development Area Environmental Sensitivity

The following summary of the development site environmental sensitivities is identified. Only the highest environmental sensitivity is indicated. The footprint environmental sensitivities for the proposed development footprint as identified, are indicative only and must be verified on site by a suitably qualified person before the specialist assessments identified below can be confirmed.

Theme	Very High sensitivity	High sensitivity	Medium sensitivity	Low sensitivity
Agriculture Theme		X		
Animal Species Theme		X		
Aquatic Biodiversity Theme	X			
Archaeological and Cultural Heritage Theme	X			
Civil Aviation Theme		X		
Defence Theme			X	
Paleontology Theme		X		
Plant Species Theme			X	
Terrestrial Biodiversity Theme	X			

Specialist assessments identified

Based on the selected classification, and the known impacts associated with the proposed development, the following list of specialist assessments have been identified for inclusion in the assessment report. It is the responsibility of the EAP to confirm this list and to motivate in the assessment report, the reason for not including any of the identified specialist study including the provision of photographic evidence of the site situation.

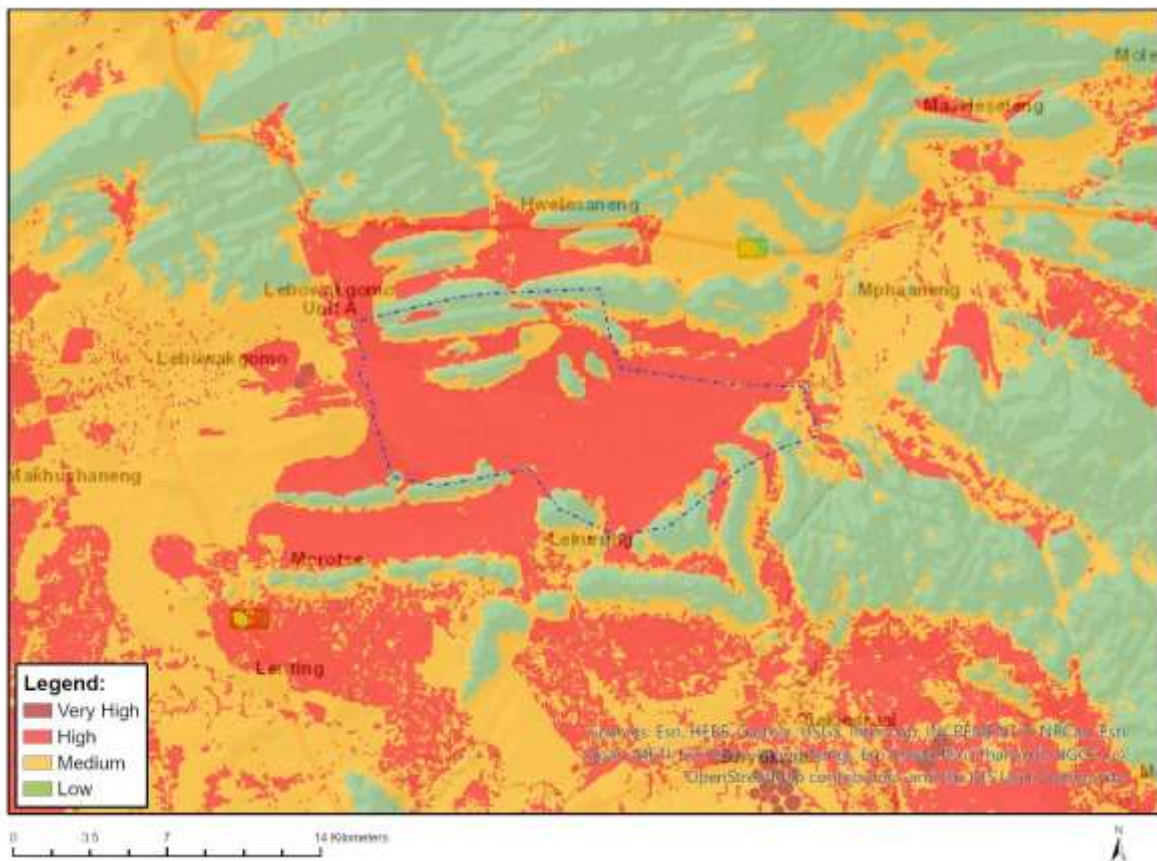
No	Specialist assessment	Assessment Protocol
1	Agricultural Impact Assessment	https://screening.environment.gov.za/ScreeningDownloads/AssessmentProtocols/Gazetted_General_Agriculture_Assessment_Protocols.pdf
2	Landscape/Visual Impact Assessment	https://screening.environment.gov.za/ScreeningDownloads/AssessmentProtocols/Gazetted_General_Requirement_Assessment_Protocols.pdf
3	Archaeological and Cultural Heritage Impact Assessment	https://screening.environment.gov.za/ScreeningDownloads/AssessmentProtocols/Gazetted_General_Requirement_Assessment_Protocols.pdf

		rotocols.pdf
4	Palaeontology Impact Assessment	https://screening.environment.gov.za/ScreeningDownloads/AssessmentProtocols/Gazetted General Requirement Assessment Protocols.pdf
5	Terrestrial Biodiversity Impact Assessment	https://screening.environment.gov.za/ScreeningDownloads/AssessmentProtocols/Gazetted Terrestrial Biodiversity Assessment Protocols.pdf
6	Aquatic Biodiversity Impact Assessment	https://screening.environment.gov.za/ScreeningDownloads/AssessmentProtocols/Gazetted Aquatic Biodiversity Assessment Protocols.pdf
7	Hydrology Assessment	https://screening.environment.gov.za/ScreeningDownloads/AssessmentProtocols/Gazetted General Requirement Assessment Protocols.pdf
8	Noise Impact Assessment	https://screening.environment.gov.za/ScreeningDownloads/AssessmentProtocols/Gazetted Noise Impacts Assessment Protocol.pdf
9	Radioactivity Impact Assessment	https://screening.environment.gov.za/ScreeningDownloads/AssessmentProtocols/Gazetted General Requirement Assessment Protocols.pdf
10	Traffic Impact Assessment	https://screening.environment.gov.za/ScreeningDownloads/AssessmentProtocols/Gazetted General Requirement Assessment Protocols.pdf
11	Geotechnical Assessment	https://screening.environment.gov.za/ScreeningDownloads/AssessmentProtocols/Gazetted General Requirement Assessment Protocols.pdf
12	Climate Impact Assessment	https://screening.environment.gov.za/ScreeningDownloads/AssessmentProtocols/Gazetted General Requirement Assessment Protocols.pdf
13	Health Impact Assessment	https://screening.environment.gov.za/ScreeningDownloads/AssessmentProtocols/Gazetted General Requirement Assessment Protocols.pdf
14	Socio-Economic Assessment	https://screening.environment.gov.za/ScreeningDownloads/AssessmentProtocols/Gazetted General Requirement Assessment Protocols.pdf
15	Ambient Air Quality Impact Assessment	https://screening.environment.gov.za/ScreeningDownloads/AssessmentProtocols/Gazetted General Requirement Assessment Protocols.pdf
16	Seismicity Assessment	https://screening.environment.gov.za/ScreeningDownloads/AssessmentProtocols/Gazetted General Requirement Assessment Protocols.pdf
17	Plant Species Assessment	https://screening.environment.gov.za/ScreeningDownloads/AssessmentProtocols/Gazetted Plant Species Assessment Protocols.pdf
18	Animal Species Assessment	https://screening.environment.gov.za/ScreeningDownloads/AssessmentProtocols/Gazetted Animal Species Assessment Protocols.pdf

Results of the environmental sensitivity of the proposed area.

The following section represents the results of the screening for environmental sensitivity of the proposed site for relevant environmental themes associated with the project classification. It is the duty of the EAP to ensure that the environmental themes provided by the screening tool are comprehensive and complete for the project. Refer to the disclaimer.

MAP OF RELATIVE AGRICULTURE THEME SENSITIVITY



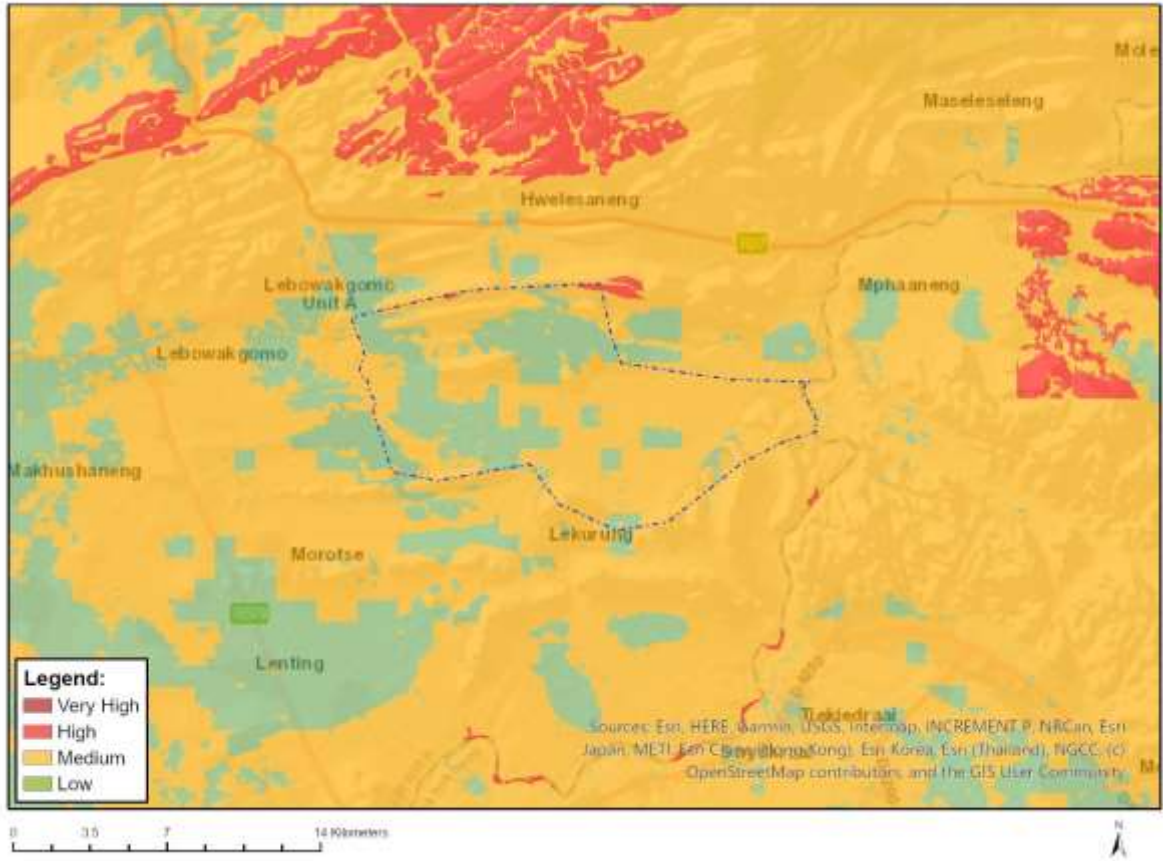
Very High sensitivity	High sensitivity	Medium sensitivity	Low sensitivity
	X		

Sensitivity Features:

Sensitivity	Feature(s)
High	Land capability;09. Moderate-High/10. Moderate-High
High	Subsistence Farming;Land capability;09. Moderate-High/10. Moderate-High
High	Subsistence Farming;Land capability;06. Low-Moderate/07. Low-Moderate/08. Moderate
High	Subsistence Farming;Land capability;01. Very low/02. Very low/03. Low-Very low/04. Low-Very low/05. Low
High	Subsistence Farming_Old fields;Land capability;06. Low-Moderate/07. Low-Moderate/08. Moderate
High	Subsistence Farming_Old fields;Land capability;01. Very low/02. Very low/03. Low-Very low/04. Low-Very low/05. Low
High	Subsistence Farming_Old fields;Land capability;09. Moderate-High/10. Moderate-High
High	Annual Crop Cultivation / Planted Pastures Rotation;Land capability;09. Moderate-High/10. Moderate-

	High
Low	Land capability;01. Very low/02. Very low/03. Low-Very low/04. Low-Very low/05. Low
Medium	Land capability;06. Low-Moderate/07. Low-Moderate/08. Moderate

MAP OF RELATIVE ANIMAL SPECIES THEME SENSITIVITY



Where only a sensitive plant unique number or sensitive animal unique number is provided in the screening report and an assessment is required, the environmental assessment practitioner (EAP) or specialist is required to email SANBI at eiadatarequests@sanbi.org.za listing all sensitive species with their unique identifiers for which information is required. The name has been withheld as the species may be prone to illegal harvesting and must be protected. SANBI will release the actual species name after the details of the EAP or specialist have been documented.

Very High sensitivity	High sensitivity	Medium sensitivity	Low sensitivity
	X		

Sensitivity Features:

Sensitivity	Feature(s)
High	Aves-Gyps coprotheres
Low	Subject to confirmation
Medium	Aves-Podica senegalensis
Medium	Aves-Hydroprogne caspia
Medium	Aves-Sagittarius serpentarius
Medium	Aves-Aquila rapax
Medium	Mammalia-Crocidura maquassiensis
Medium	Mammalia-Dasymys robertsii
Medium	Reptilia-Kinixys lobatsiana

MAP OF RELATIVE AQUATIC BIODIVERSITY THEME SENSITIVITY

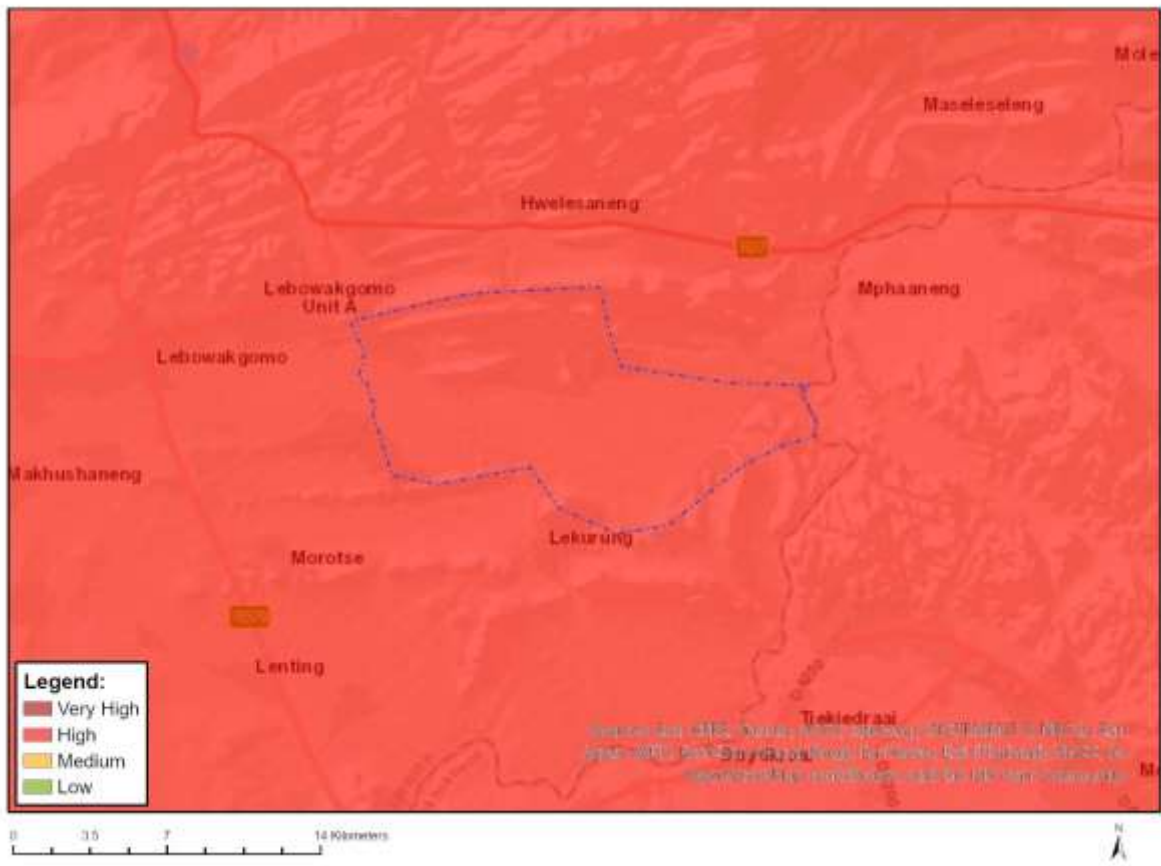


Very High sensitivity	High sensitivity	Medium sensitivity	Low sensitivity
X			

Sensitivity Features:

Sensitivity	Feature(s)
Low	Low sensitivity
Very High	FEPA Subcatchment
Very High	Rivers_D
Very High	Wetlands_(River)
Very High	Wetlands_Central Bushveld Bioregion (Depression)
Very High	Wetlands_Central Bushveld Bioregion (Valley-bottom)

MAP OF RELATIVE CIVIL AVIATION THEME SENSITIVITY

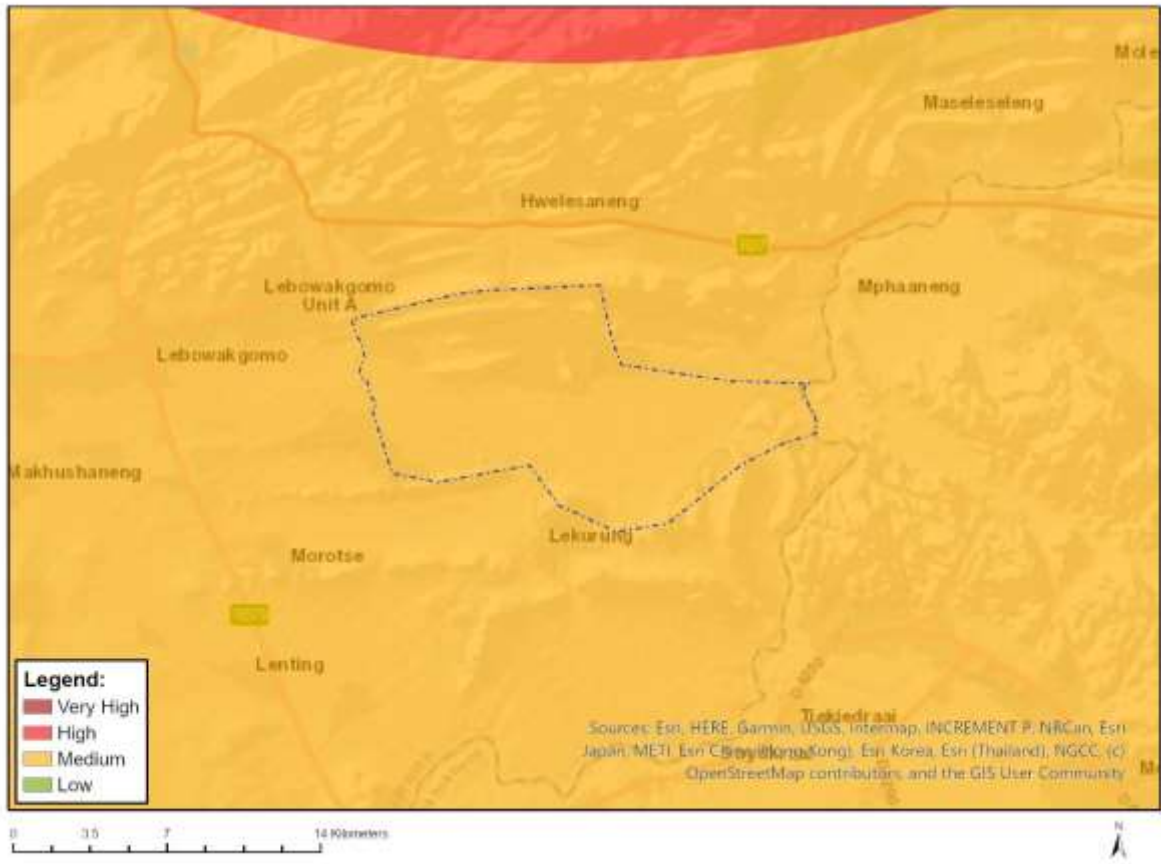


Very High sensitivity	High sensitivity	Medium sensitivity	Low sensitivity
	X		

Sensitivity Features:

Sensitivity	Feature(s)
High	Dangerous and restricted airspace as demarcated
Medium	Between 8 and 15 km of other civil aviation aerodrome

MAP OF RELATIVE DEFENCE THEME SENSITIVITY

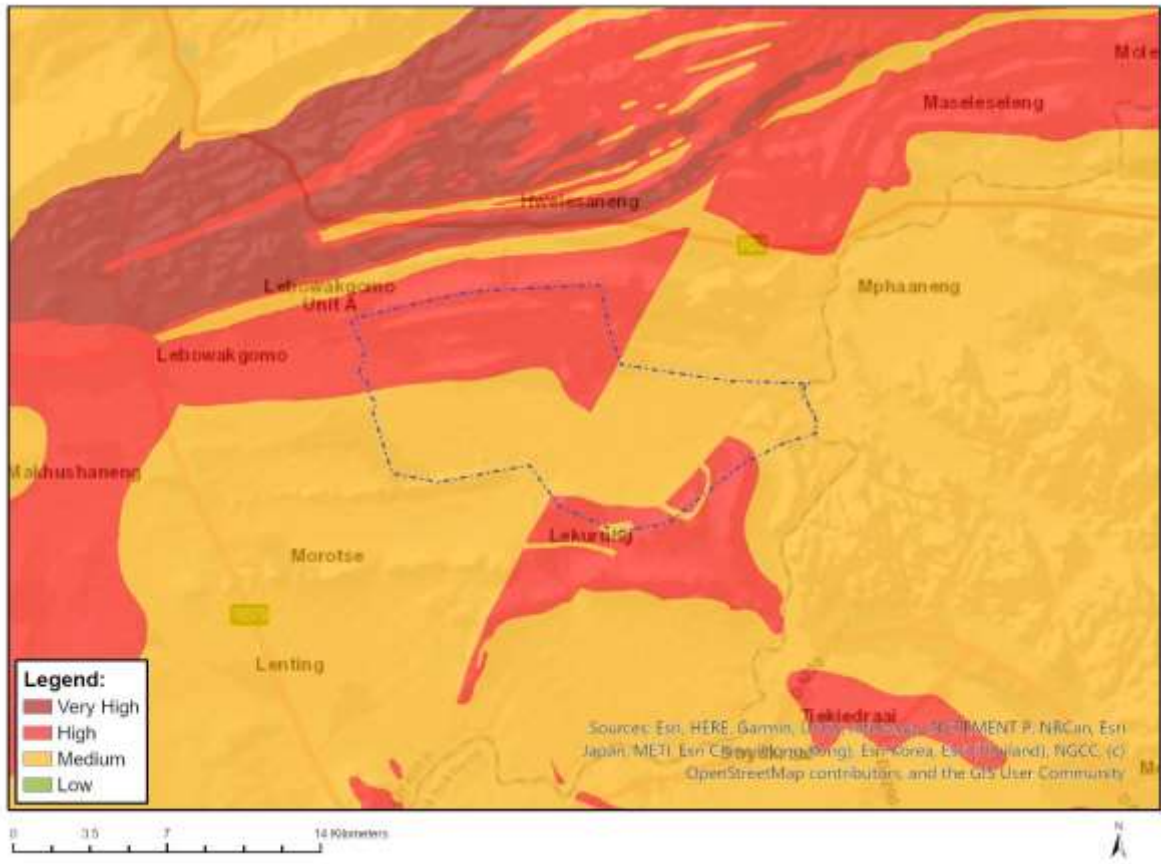


Very High sensitivity	High sensitivity	Medium sensitivity	Low sensitivity
		X	

Sensitivity Features:

Sensitivity	Feature(s)
Medium	Military and Defence Site

MAP OF RELATIVE PALEONTOLOGY THEME SENSITIVITY



Very High sensitivity	High sensitivity	Medium sensitivity	Low sensitivity
	X		

Sensitivity Features:

Sensitivity	Feature(s)
High	Features with a High paleontological sensitivity
Low	Features with a Low paleontological sensitivity
Medium	Features with a Medium paleontological sensitivity

MAP OF RELATIVE PLANT SPECIES THEME SENSITIVITY



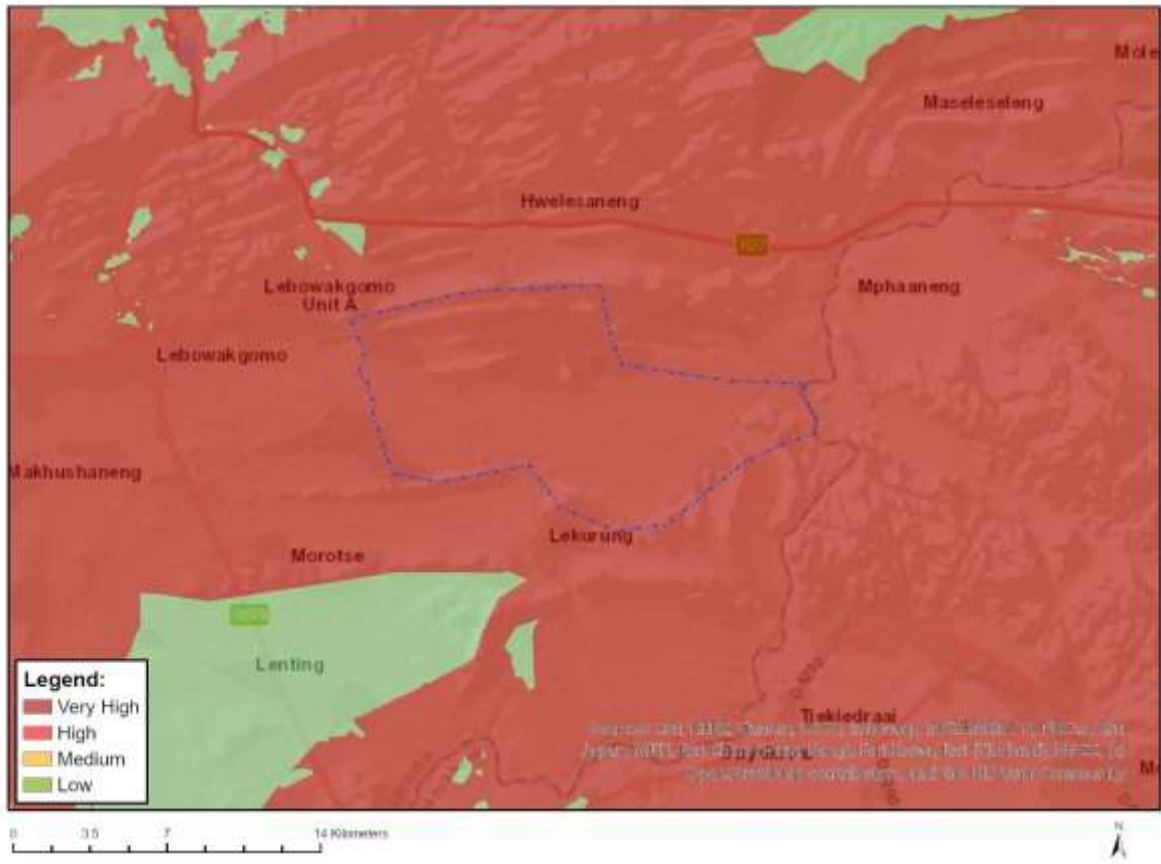
Where only a sensitive plant unique number or sensitive animal unique number is provided in the screening report and an assessment is required, the environmental assessment practitioner (EAP) or specialist is required to email SANBI at wiadatarequests@sanbi.org.za listing all sensitive species with their unique identifiers for which information is required. The name has been withheld as the species may be prone to illegal harvesting and must be protected. SANBI will release the actual species name after the details of the EAP or specialist have been documented.

Very High sensitivity	High sensitivity	Medium sensitivity	Low sensitivity
		X	

Sensitivity Features:

Sensitivity	Feature(s)
Low	Low Sensitivity
Medium	Sensitive species 1252
Medium	Polygala sekhukhuniensis

MAP OF RELATIVE TERRESTRIAL BIODIVERSITY THEME SENSITIVITY



Very High sensitivity	High sensitivity	Medium sensitivity	Low sensitivity
X			

Sensitivity Features:

Sensitivity	Feature(s)
Very High	CBA 1
Very High	CBA 2
Very High	ESA 1
Very High	ESA 2
Very High	FEPA Subcatchment
Very High	EN_Sekhukhune Plains Bushveld