

Legend

- Coordinates
- Plant and Stockpile Area
- Underground
- Opencast
- Farm Boundary

Plan 2(2)
Dithabeng Mphahlele Mining
 In the district of Lepelle-Nkumpi
Project Extent: 11 725.0951 Ha
 After 1:50 000 Topo Sheet
 2429 BC, AD & BD
WGS84/Hartebeeshoek



Farm Boundary

WGS84 COORDINATES

Points	X	Y
0	29.561142	-24.302859
1	29.662513	-24.290496
2	29.671908	-24.319671
3	29.748802	-24.327089
4	29.752016	-24.345879
5	29.691193	-24.379999
6	29.670425	-24.382472
7	29.646442	-24.372582
8	29.63408	-24.357994
9	29.596746	-24.364175
10	29.577213	-24.360467
11	29.569549	-24.337226

Prepared by


Regional Manager's Signature _____ **Applicant's Signature** _____

Date _____ **Date** _____

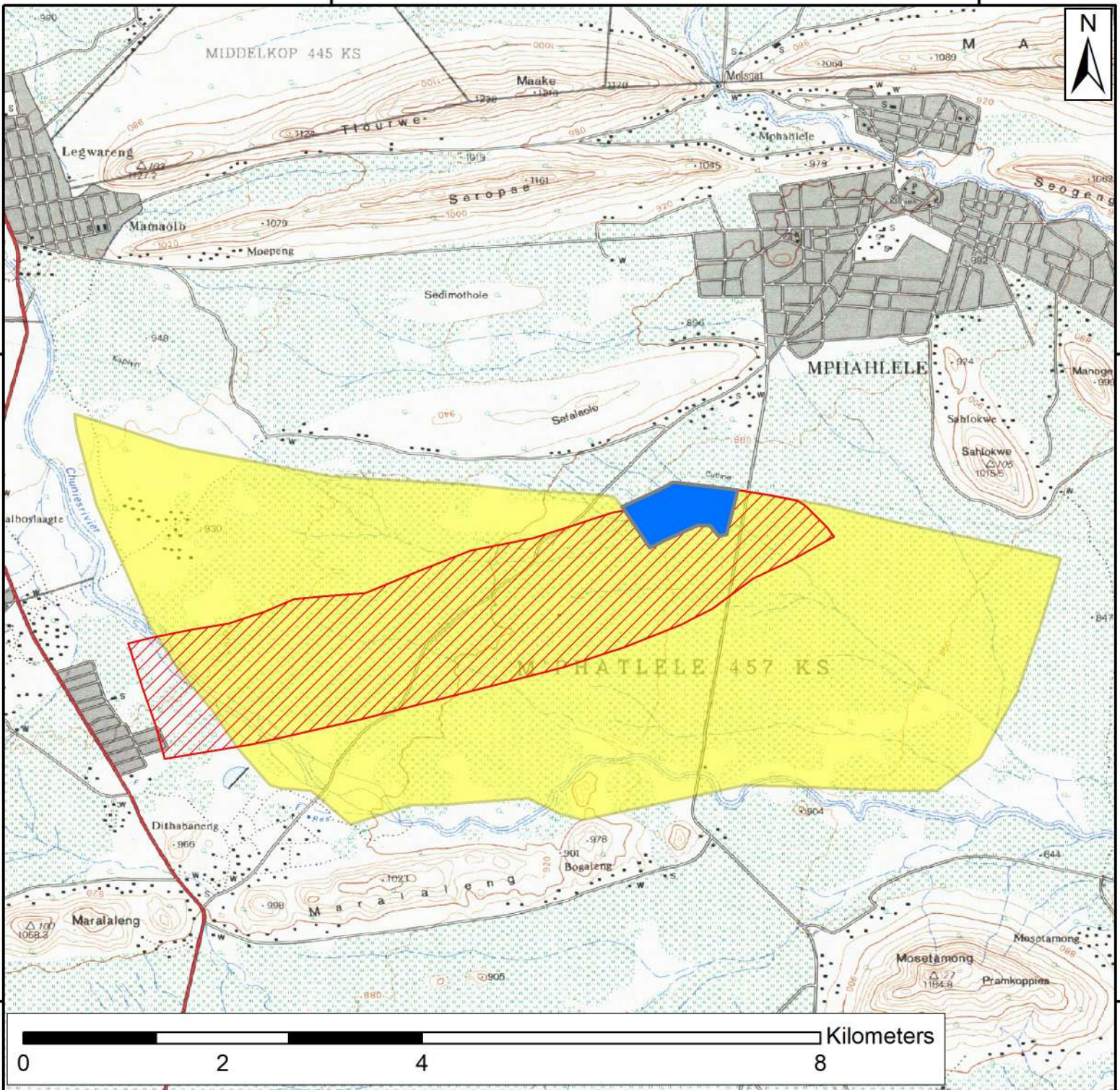
Text THE REGISTERED DESCRIPTION OF THE LAND TO WHICH THE APPLICATION RELATES SPECIFYING THE FARM NAME AND FARM PORTION

Farm Name	Farm Number	Farm Portion	SG ID
LOCATIE VAN M'PHATLELE	457	RE	TOKS0000000045700000
		1	TOKS0000000045700001
		19	TOKS0000000045700019
		29	TOKS0000000045700029



29°35'30"E




29°39'0"E

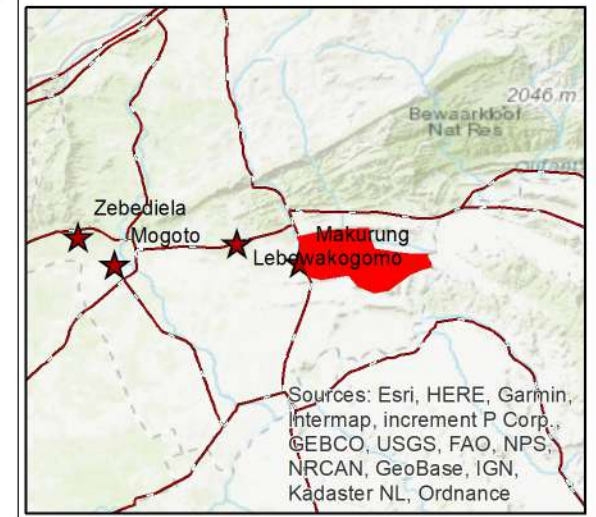


Preliminary Layout

Dithabeng Mphahlele Mining

Legend

-  Plant and Stockpile Area
-  Underground
-  Opencast

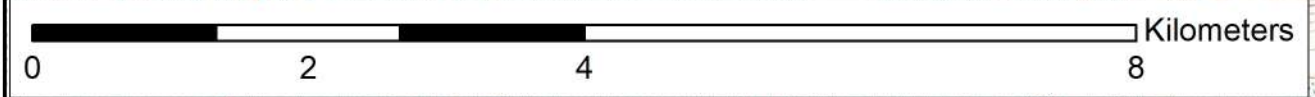


Coord System: GCS WGS 1984

Datum: WGS 1984

Units: Degrees

Prepared by:



29°35'30"E

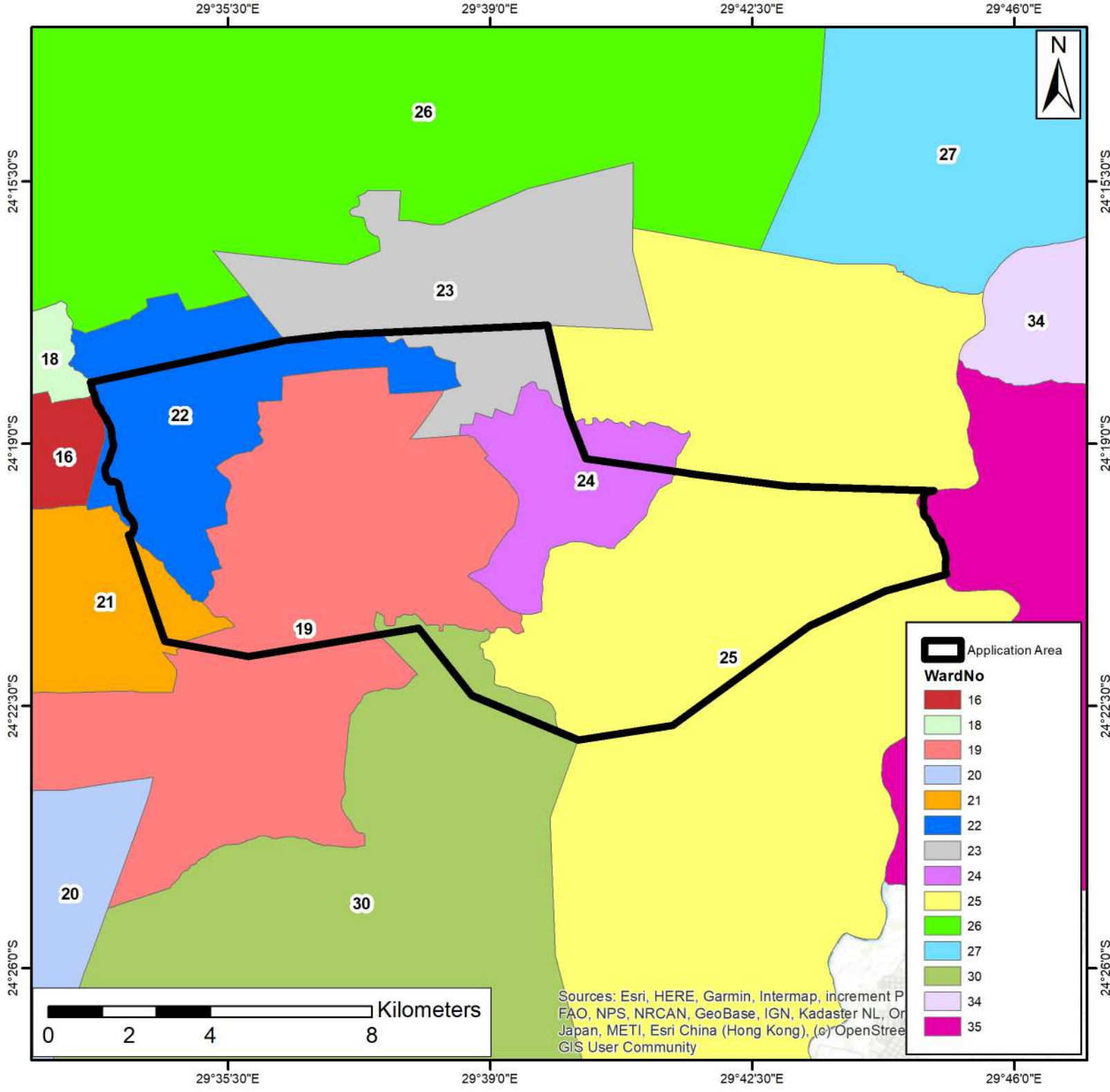
29°39'0"E

24°19'0"S

24°19'0"S

24°22'30"S

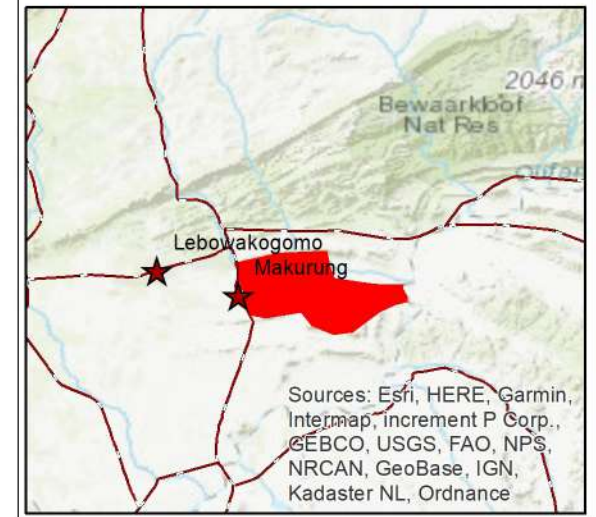
24°22'30"S



Ward Demarcation

Dithabeng Mphahlele Mining

Data Source:
Municipal Demarcation Board



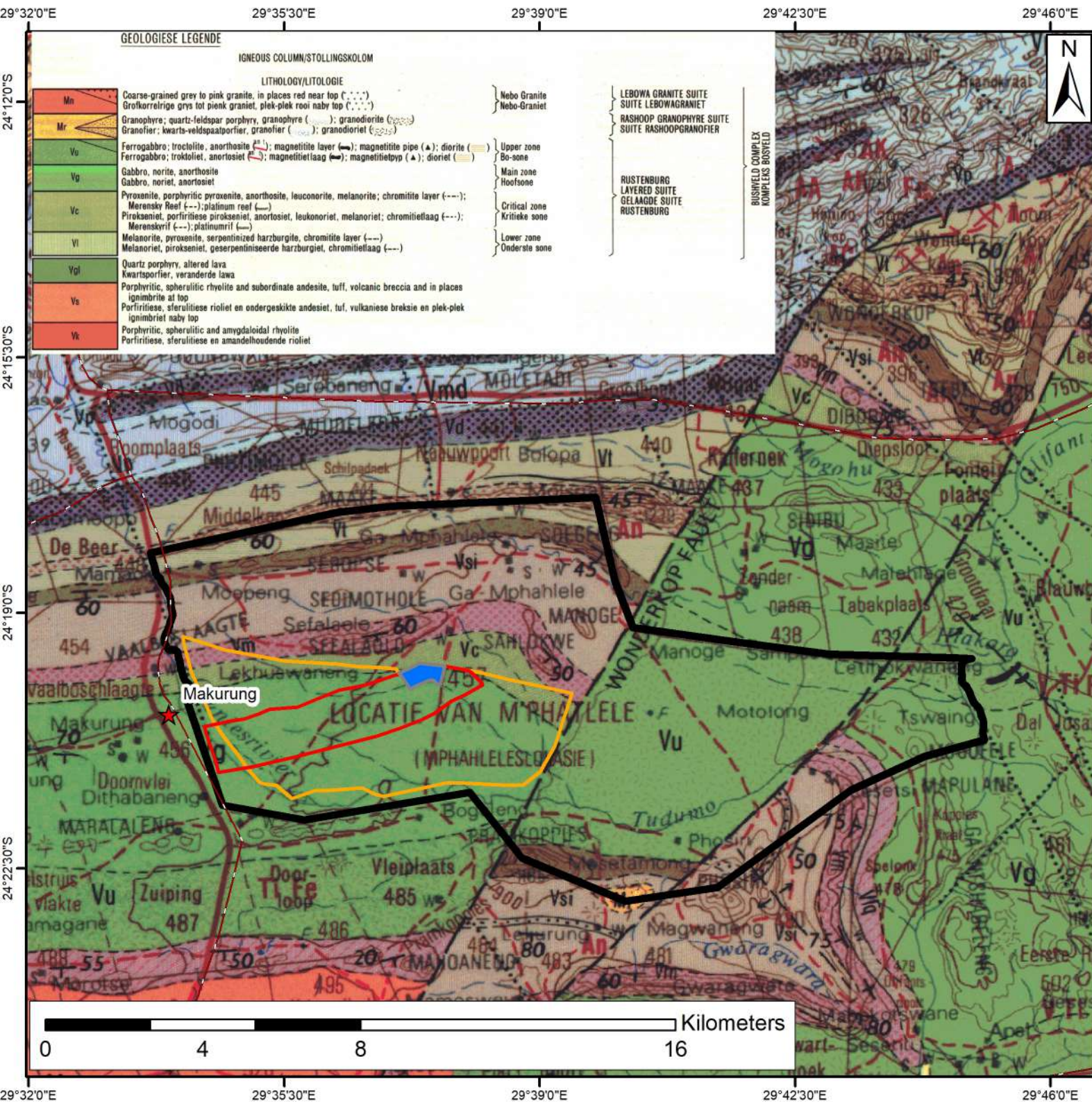
Coord System: GCS WGS 1984

Datum: WGS 1984

Units: Degrees

Prepared by:

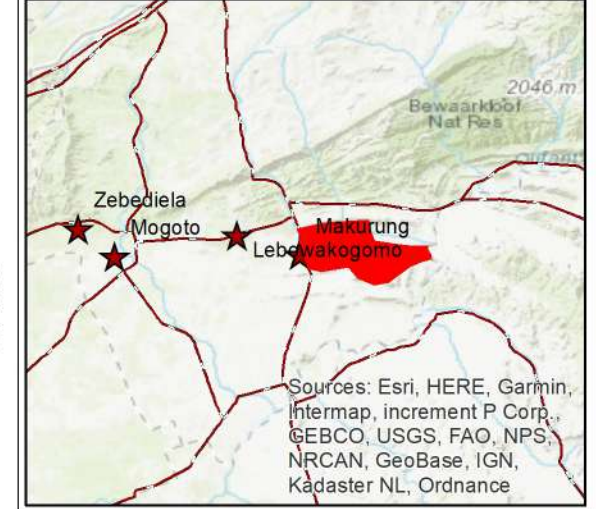
Shango Solutions
Excellence and innovation in the Resources Industry



Geology

Dithabeng Mphahlele Mining

- ### Legend
- ★ Towns
 - Provincial Roads
 - ▭ Application Area
 - ▭ Plant and Stockpile Area
 - ▭ Underground
 - ▭ Opencast



Coord System: GCS WGS 1984
 Datum: WGS 1984
 Units: Degrees

Prepared by:

GEOLOGIESE LEGENDE	
IGNEOUS COLUMN/STOLLINGSKOLOM	
LITHOLOGY/LITOLOGIE	
Mn	Coarse-grained grey to pink granite, in places red near top (---); Grofkorrelrige grys tot pienk graniet, plek-plek rooi naby top (---)
Mr	Granophyre; quartz-feldspar porphyry, granophyre (---); granodiorite (---); Granofier; kwarts-veldspaatporfier, granofier (---); granodioriet (---)
Vu	Ferrogabbro; troctoliet, anorthosite (---); magnetiite layer (---); magnetiite pipe (▲); diorite (---)
Vg	Ferrogabbro; troctoliet, anortosiet (---); magnetiitelaag (---); magnetiitetyf (▲); dioriet (---)
Vc	Gabbro, norite, anorthosite
Vv	Gabbro, noriet, anortosiet
Vs	Pyroxenite, porphyritic pyroxenite, anorthosite, leuconorite, melanorite; chromiite layer (---); Merensky Reef (---); platinum reef (---)
Vt	Pirokseniet, porfiritiese pirokseniet, anortosiet, leuconoriet, melanoriet; chromiitelaag (---); Merenskyrif (---); platinumrif (---)
Vl	Melanorite, pyroxenite, serpentinized harzburgite, chromiite layer (---)
Vk	Melanoriet, pirokseniet, geserpentiniseerde harzburgiet, chromiitelaag (---)
Vgl	Quartz porphyry, altered lava
Vgs	Kwartsporfier, veranderde lava
Vgs	Porphyritic, spherulitic rhyolite and subordinate andesite, tuff, volcanic breccia and in places ignimbrite at top
Vks	Porfiritiese, sferulitiese rioliet en ondergeskikte andesiet, tuf, vulkaniese breksie en plek-plek ignimbriet naby top
Vks	Porphyritic, spherulitic and amygdaloidal rhyolite
Vks	Porfiritiese, sferulitiese en amandelhoudende rioliet

NEBO-GRANIE
 NEBO-GRANIE

LEBOWA GRANITE SUITE
 SUITE LEBOWAGRANIE
 RASHOOP GRANOPHYRE SUITE
 SUITE RASHOOPGRANOFIER

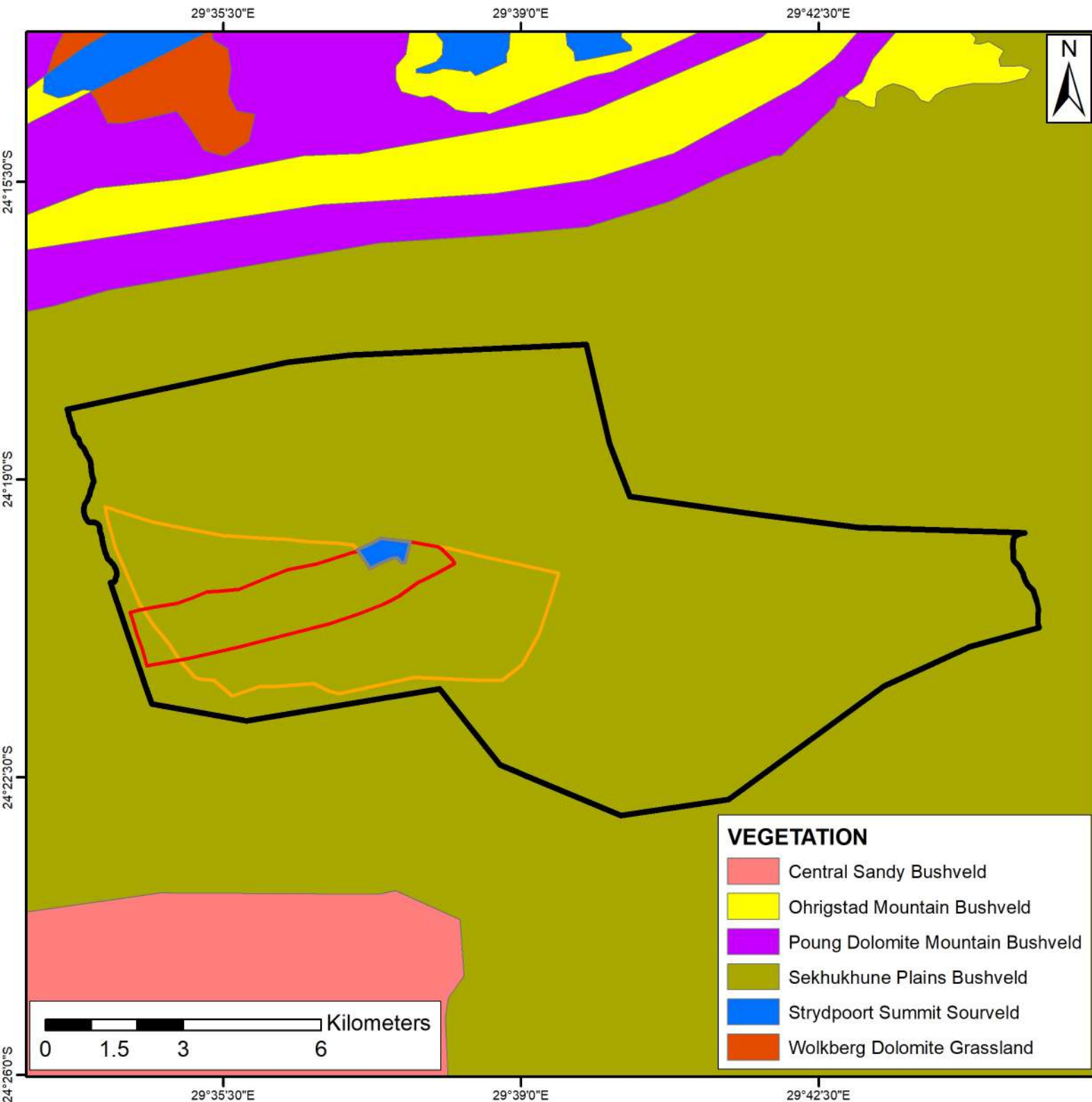
Upper zone
 Bo-sone

Main zone
 Hoofsone

Critical zone
 Kritieke sone

Lower zone
 Onderste sone

BUSHWELD COMPLEX
 KOMPLEKS BOSVELD

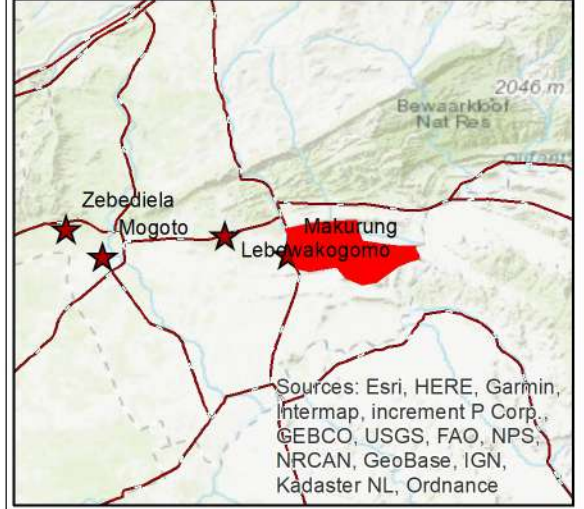


Vegetation

Dithabeng Mphahlele Mining

- ### Legend
- Application Area
 - Plant and Stockpile Area
 - Underground
 - Opencast

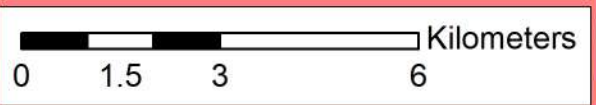
Source:
Vegetation of South Africa, Lesotho and Swaziland (Mucina and Rutherford 2006)

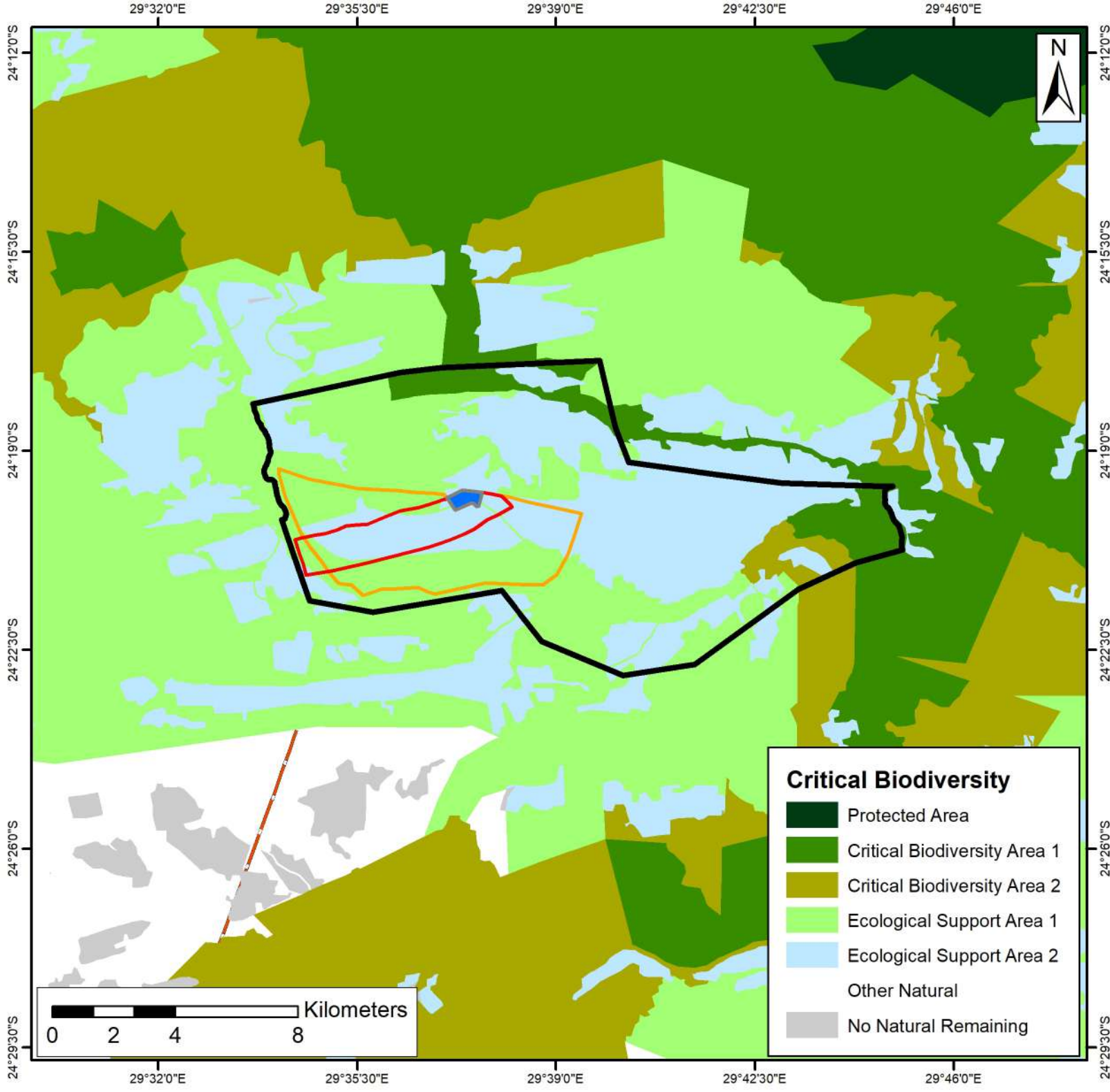


Coord System: GCS WGS 1984
Datum: WGS 1984
Units: Degrees

Prepared by:

- ### VEGETATION
- Central Sandy Bushveld
 - Ohrigstad Mountain Bushveld
 - Poug Dolomite Mountain Bushveld
 - Sekhukhune Plains Bushveld
 - Strydpoort Summit Sourveld
 - Wolkberg Dolomite Grassland





Terrestrial Critical Biodiversity

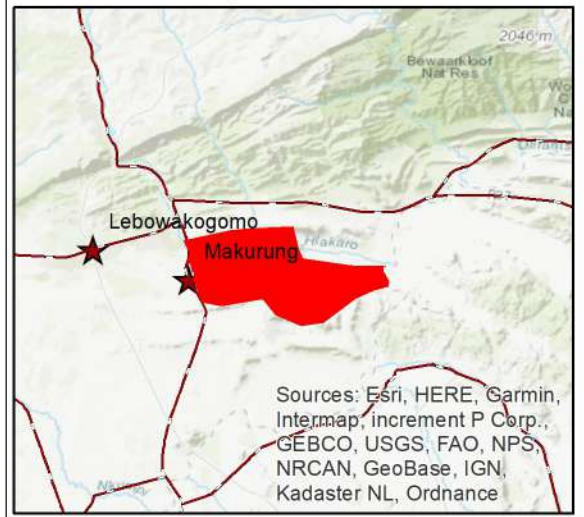
Dithabeng Mphahlele Mining

Legend

- Application Area
- Underground
- Plant and Stockpile Area
- Opencast
- Provincial Roads

Data Source:

South African National Biodiversity Institute (SANBI)



Critical Biodiversity

- Protected Area
- Critical Biodiversity Area 1
- Critical Biodiversity Area 2
- Ecological Support Area 1
- Ecological Support Area 2
- Other Natural
- No Natural Remaining

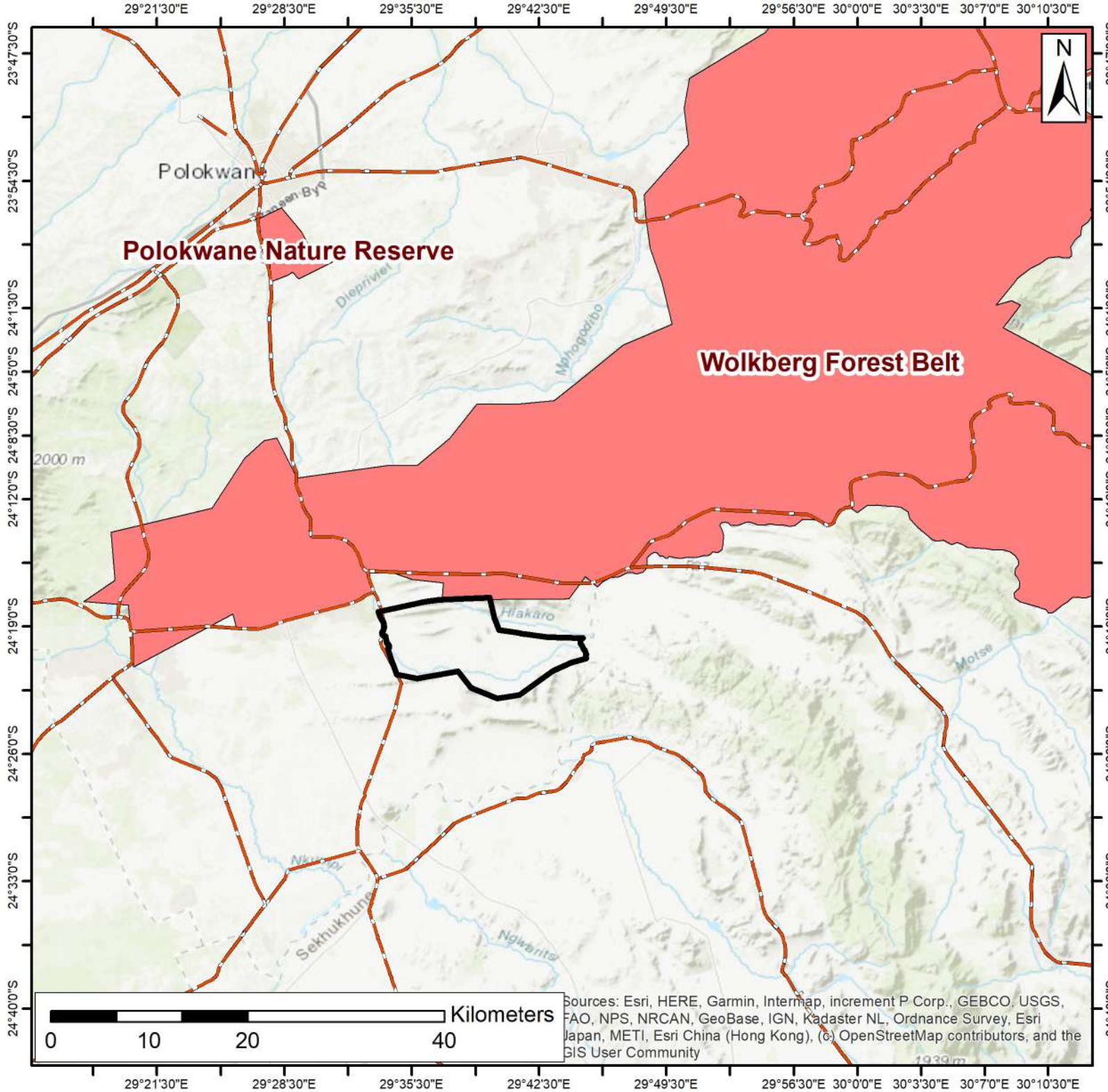
Coord System: GCS WGS 1984

Datum: WGS 1984

Units: Degrees

Prepared by:



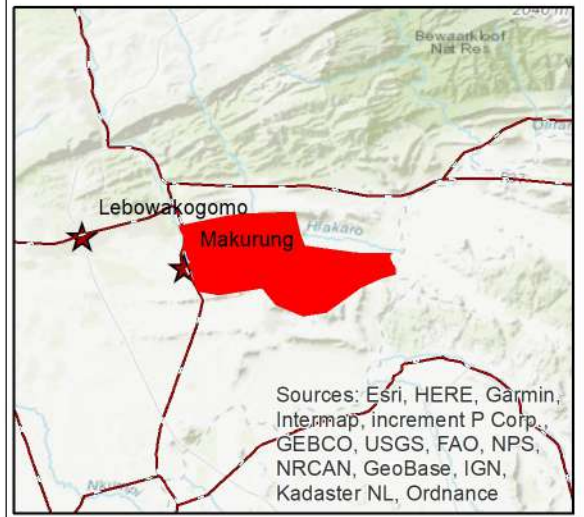


Important Bird Areas

Dithabeng Mphahlele Mining

-  Application Area
-  Provincial Roads
-  Important Bird Areas

Data Source:
Bird Life South Africa

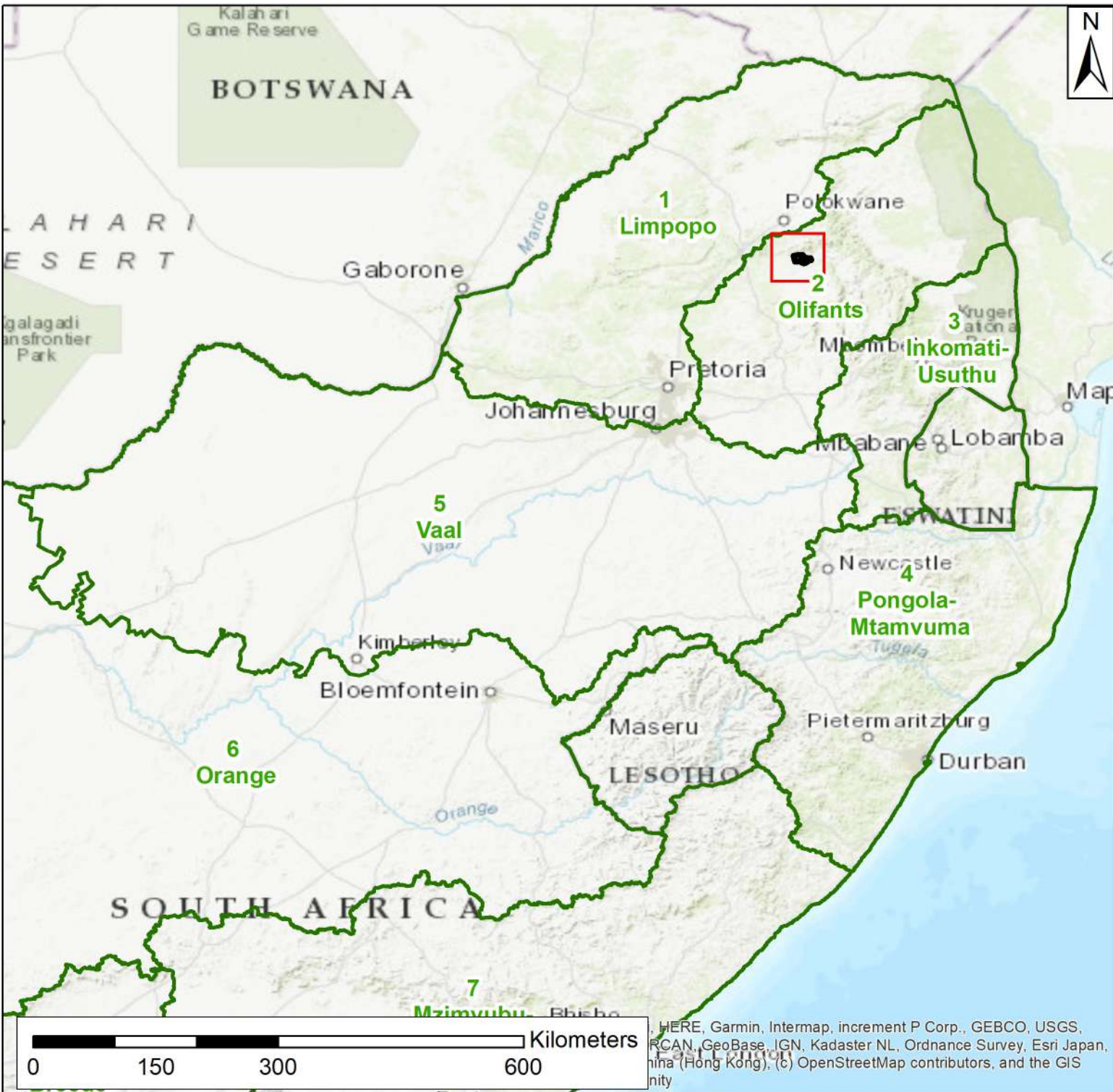


Coord System: GCS WGS 1984
Datum: WGS 1984
Units: Degrees

Prepared by:



Shango Solutions
Excellence and innovation in the Resources Industry

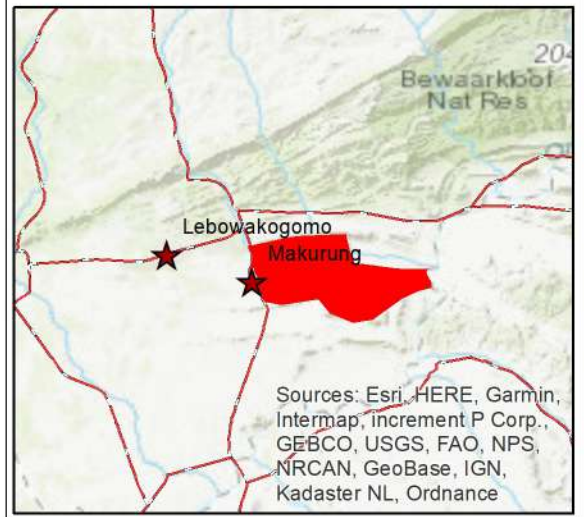


Water Management Areas

Dithabeng Mphahlele Mining

- Water Management Areas
- Application Area

Source:
Department of Water and Sanitation



Coord System: GCS WGS 1984

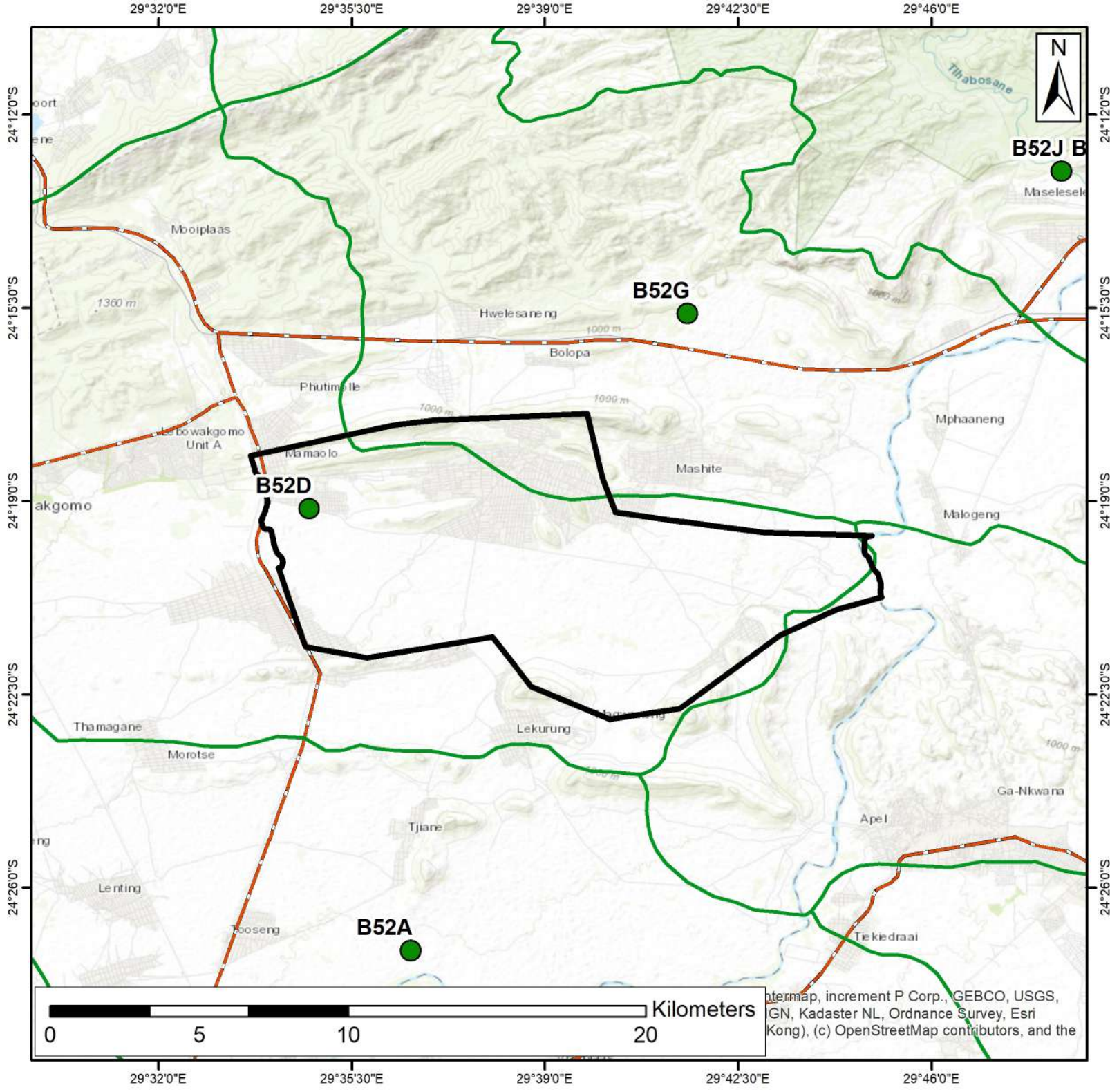
Datum: WGS 1984

Units: Degrees

Prepared by:



HERE, Garmin, Intermap, increment P Corp., GEBCO, USGS, NRCAN, GeoBase, IGN, Kadaster NL, Ordnance Survey, Esri Japan, Swisstopo (Hong Kong), (c) OpenStreetMap contributors, and the GIS community

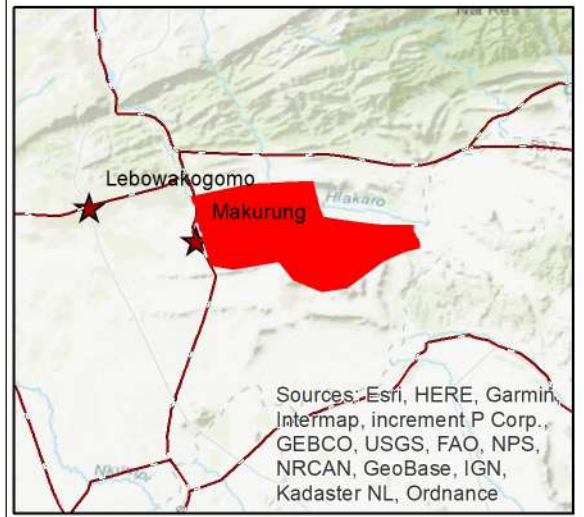


Quaternary Catchments

Dithabeng Mphahlele Mining

-  Application Area
-  Quaternaries Boundary
-  Quaternaries Points
-  Provincial Roads

Data Source:
Department of Water and Sanitation

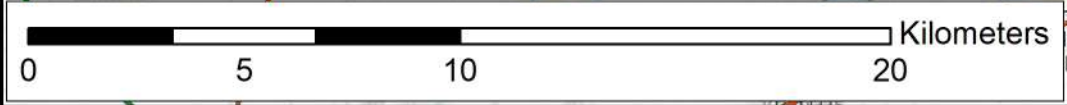


Coord System: GCS WGS 1984
Datum: WGS 1984
Units: Degrees

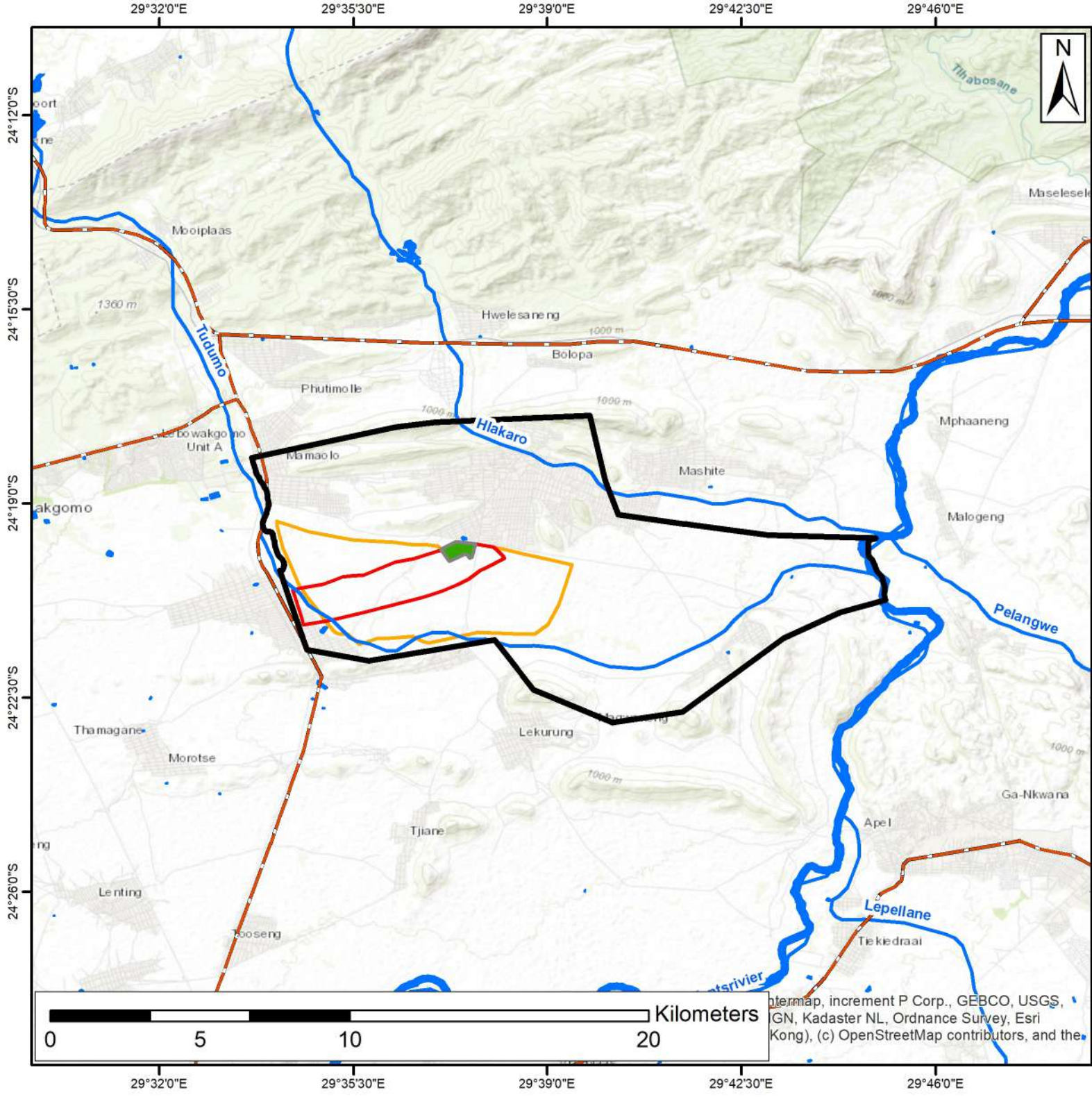
Prepared by:



Shango Solutions
Excellence and innovation in the Resources industry



Intermap, increment P Corp., GEBCO, USGS, IGN, Kadaster NL, Ordnance Survey, Esri (Kong), (c) OpenStreetMap contributors, and the

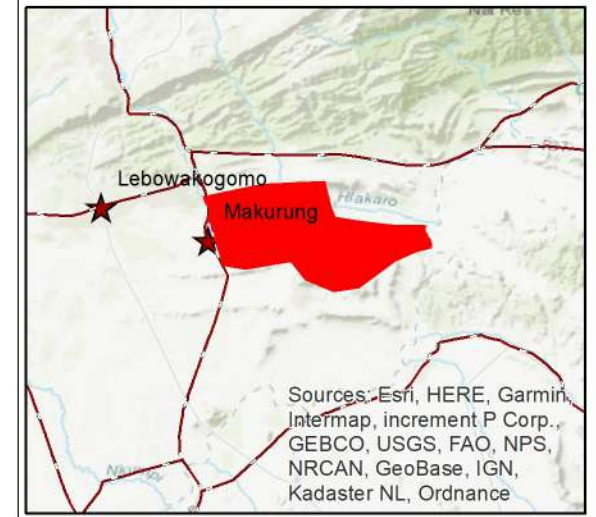


Surface Hydrology

Dithabeng Mphahlele Mining

- Application Area
- Rivers
- NFEPA Wetlands
- Plant and Stockpile Area
- Underground
- Opencast
- Provincial Roads

Data Source:
Department of Water and Sanitation

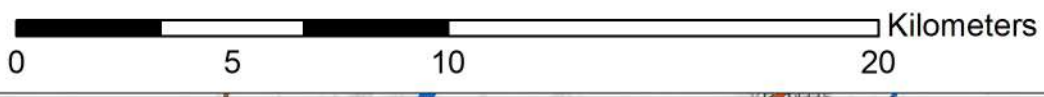


Coord System: GCS WGS 1984

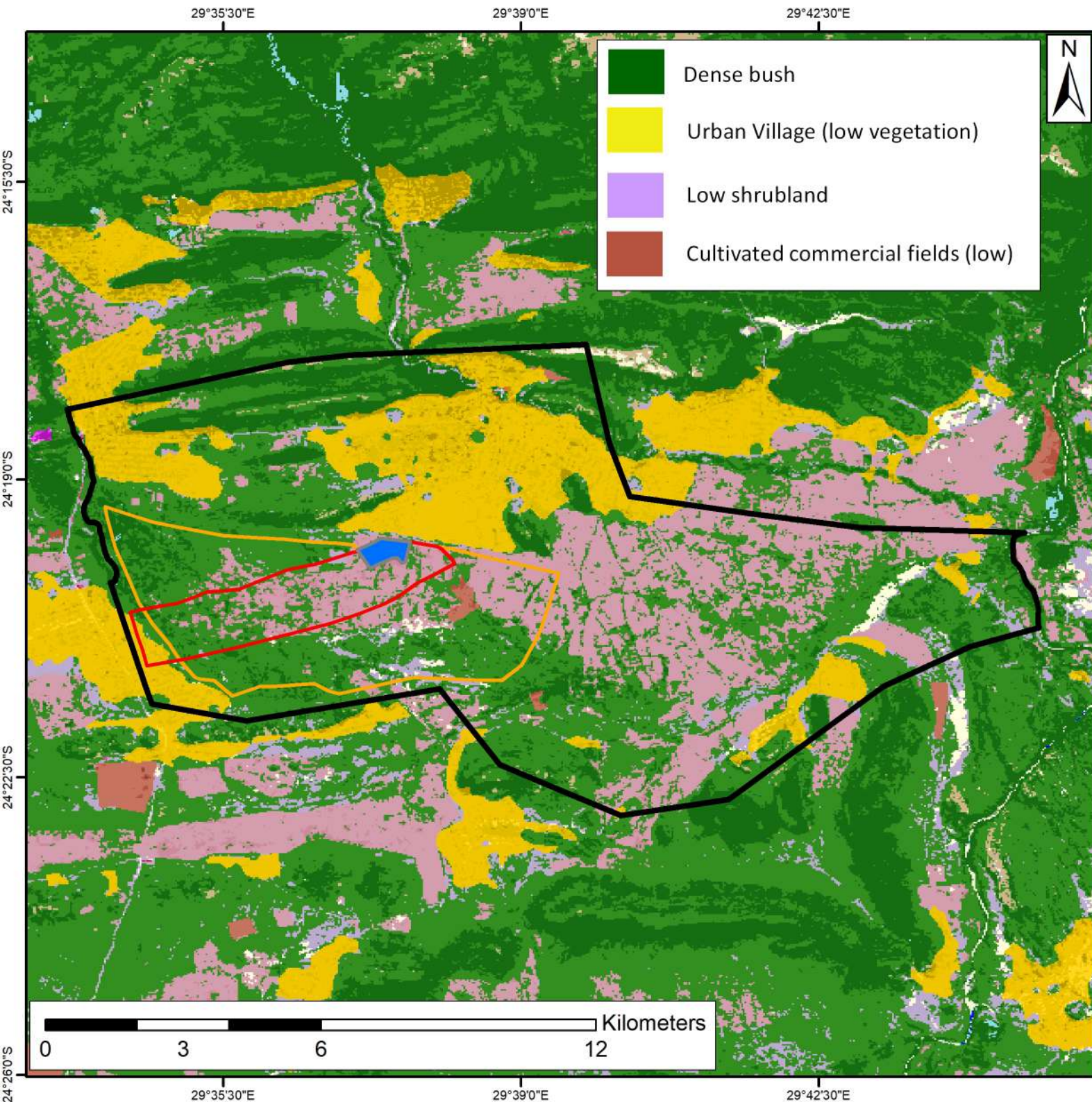
Datum: WGS 1984

Units: Degrees

Prepared by:



Intermap, increment P Corp., GEBCO, USGS, IGN, Kadaster NL, Ordnance Survey, Esri (Kong), (c) OpenStreetMap contributors, and the



- Dense bush
- Urban Village (low vegetation)
- Low shrubland
- Cultivated commercial fields (low)



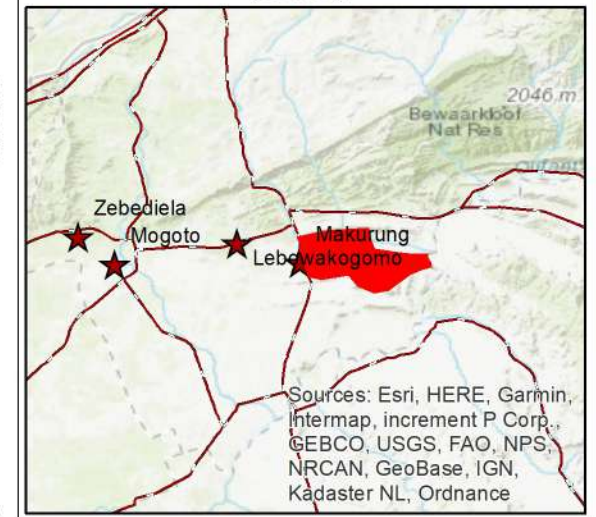
Land Use Cover

Dithabeng Mphahlele Mining

Legend

- Application Area
- Plant and Stockpile Area
- Underground
- Opencast

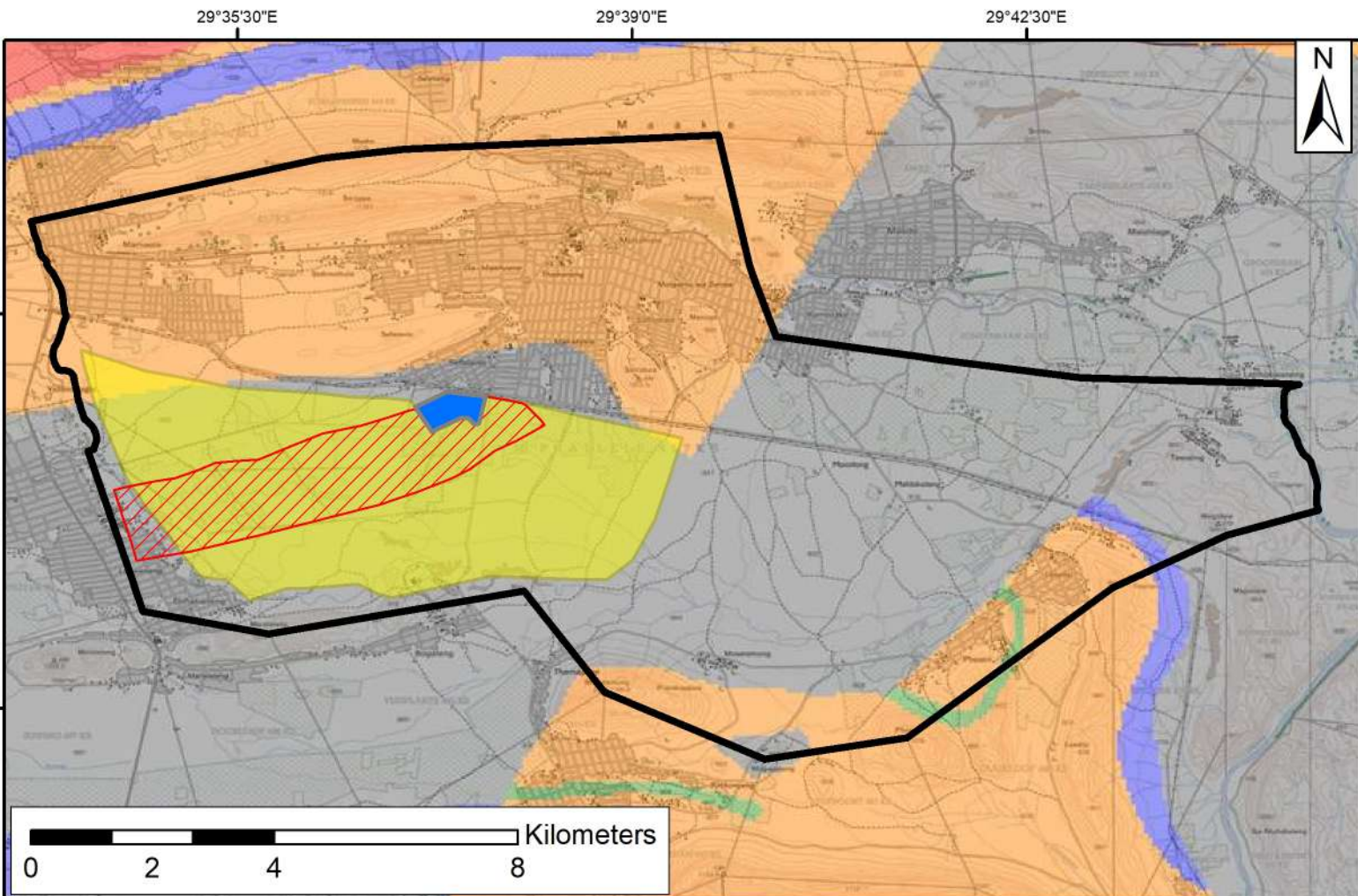
Source:
South African National Biodiversity Institute (SANBI)



Coord System: GCS WGS 1984
Datum: WGS 1984
Units: Degrees

Prepared by:





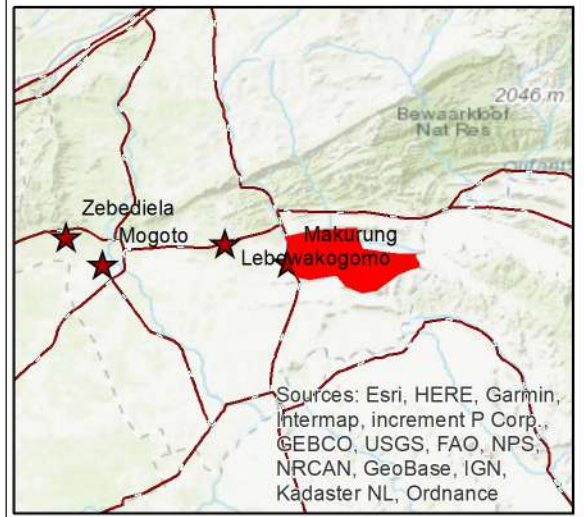
Colour	Sensitivity	Required Action
RED	VERY HIGH	field assessment and protocol for finds is required
ORANGE/YELLOW	HIGH	desktop study is required and based on the outcome of the desktop study, a field assessment is likely
GREEN	MODERATE	desktop study is required
BLUE	LOW	no palaeontological studies are required however a protocol for finds is required
GREY	INSIGNIFICANT/ZERO	no palaeontological studies are required
WHITE/CLEAR	UNKNOWN	these areas will require a minimum of a desktop study. As more information comes to light, SAHRA will continue to populate the map.

PalaeoSensitivity Map

Dithabeng Mphahlele Mining

Legend

- Application Area
- Plant and Stockpile Area
- Underground
- Opencast



Coord System: GCS WGS 1984
 Datum: WGS 1984
 Units: Degrees

Prepared by: